



ENFORD NEWSLETTER



October 2014

www.enfordnewsletter.org



HALLOWE'EN, BONFIRE AND FIREWORKS DISPLAY
Friday 31st October



See inside for details



YOU COULD SAVE A LIFE!

Please read the leaflet inside your Newsletter
Find out where our defibrillator is
and how to use it.

ENFORD NEWSLETTER CONTENTS

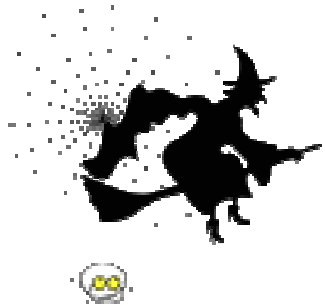
Hallowe'en, Bonfire & Fireworks	3
Remembrance Day Service and Rededication of Lychgate Memorial	4
Remembrance Day Curry Lunch	5
Messages	6
World War 1 Commemoration	6
Youth Club News	7
Youth Club Volunteers	8
Christmas Fete / Flu Jabs	9
Gardening Club	10
All Saints Church	11
From The Rector—Getting Older	12
NHS in Wiltshire	13
One Day From Our Travels	14
Ladies' Christmas Supper	15
Enford Defibrillator	16
Band Concert	17
Wiltshire Ride & Stride	17
Film Club / Congratulations	18
Fairtrade Event	19
Village Hall	20
Police	21
SPTA News	22
Advertising	24
Village Committees	31
October Diary	32

**The next Newsletter
AGM , Meeting & Deadline
is
Monday 20th October**

All items for inclusion, whether they are handwritten, typed or via e-mail, **MUST be submitted by the date of the meeting.** These articles may be handed in to any Newsletter Committee member.

**Please send e-mails to
tanya@stbecker.plus.com**

Enford Newsletter Committee reserves the right to reject or omit from publication any material that is considered by majority of Committee Members to be detrimental to any person or which is not in the best interest of the community as a whole. All letters and articles must be signed, but the Committee will withhold the name of the writer if this is requested at the time of sending it in.

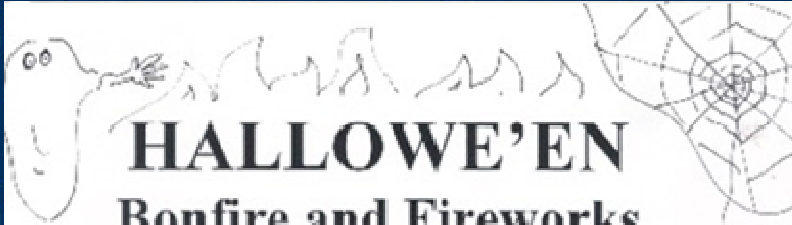


If you would like to come to any of the clubs or events in the Village Hall but would like a lift or are worried about coming on your own, please call

**01980 670501
01980 670345**

email enfordvillagehall@btinternet.com

We will try and arrange for someone² to pick you up and take you home.



HALLOWE'EN

Bonfire and Fireworks Display

Kids' Fancy Dress
How Scary Can You Be?



Pumpkin Lantern Competition



FRIDAY 31ST OCTOBER 2014

Enford Playing Fields



Adults £5
Children £2
UNDER 5s FREE



Gates Open 7.00 pm

Competitions to be judged at 7.30 pm

ENFORD CHURCH

**REMEMBRANCE DAY SERVICE
AND REDEDICATION
OF THE PARISH WAR MEMORIAL**

The Parochial Church Council (PCC) are marking the Centenary of the beginning of World War One by holding a tribute to those in the villages of East Chisenbury, Enford and Coombe, who have fallen in the service of their country. This tribute will take the form of..

**A Remembrance Day Service at Enford Church
at 1030 on Sunday 9 November 2014**

.. which will include the Rededication of the newly repaired War Memorial Lychgate where the names of the Fallen of our parish are recorded.

The Service will centre on the Lychgate. Wreaths will be laid by the Chairman of the Parish Council, a Service Representative and by the Youth Club, and we will hold a Remembrance Service of hymns and prayers. Hopefully, the service will be held outside if weather permits, or in church if not.

Do you have a relative whose name is on the War Memorial? If so, please attend as we hope that some of the names can be read out by those who have a link to the Fallen.

.....

The repairs to the Lychgate War Memorial will cost just over £7000. Contributions have been received from Wiltshire Council (£1000), the Samuel William Farmer Trust (£1500), and the PCC are pledging £2000. Other organisations and Trusts are also being approached for financial assistance.

However, this is where YOU can play a small part in supporting our Village War Memorial by making a donation, however small, to defray the cost. If you can help, please either make your contribution on the day, put your contribution in the wall mounted box inside the church door or send a cheque - payable to Enford PCC - to the PCC Treasurer: Gill Gould, Lower Farmhouse, Long Street, SN9 6AR. Every little will really help!

.....

If you would be willing to come forward and help with the Rededication Service, even if you do not have a relative link, please email Henry (Churchwarden) at: hkwmiddleton@btinternet.com

.....

We very much hope that this Act of Remembrance will accord with how you would like your Parish Church to mark this important anniversary.

*John Poole-Warren, Churchwarden
Henry Middleton, Churchwarden*

REMEMBRANCE SUNDAY

SUNDAY 9TH NOVEMBER 2014

CURRY LUNCH

ENFORD VILLAGE HALL
12.30 P.M.

Book early to avoid disappointment!

Tickets £20 p.p. including Glass of Wine

**In Aid of the Army Benevolent Fund
Soldiers' Charity**



**For tickets please contact
01980 671307 or 01980 670501**



Enford Football Club



We have had to change the start and finish times of the children's coaching sessions on a Saturday morning. They now begin at 10.00am and finish at 11.00am. They still cost £2.50 and the remaining dates up to half term are October 4th, 11th and the 18th. We then have a two week break and the next set of dates for the sessions are as follows: November 8th, 15th, 22nd and the 29th, December 6th and the 13th

We would also like to take this opportunity to thank Jane Young and everyone who helped at the recent Jumble sale that Jane organised. She has very kindly donated the sum of £72 to the children's coaching, which will help to purchase new equipment for the sessions.



CONDOLENCES
to
Ollie Stagg and Family
on the death of his father, John.

CONGRATULATIONS
Terry and Linda Mundy
on the birth of your granddaughter
Amelie Florence

CONGRATULATIONS
to
Dom and Carly
on your recent engagement

WORLD WAR 1 – COMMEMORATION

It is hoped that, some time in the not too distant future, Enford and East Chisenbury can undertake a number of activities to commemorate the Great War.

The proposal for one of these activities is to trace information relating to several individuals from the area who are related in some way to current villagers. Although the names of those who did not return are listed in the Lichgate to the Church, I would also be interested in the stories of those who survived and then lived the rest of their lives in and around the area.

I would be interested to hear about any linkage with anyone who served in the war. Maybe you have some pertinent artefacts, medals, photographs etc. which might help me to build a picture and to bring the stories to life. If I can gain enough information I would like to put on a presentation some time in 2015 to pass on what I have discovered and in so doing remember the people of Enford and East Chisenbury who fought.

If you can help me with any information please contact Bob Taylor on 07909 870122 or e-mail andrew.taylor698@hotmail.com

We are also hoping to put on some kind of event/party/themed evening to commemorate WW1. We don't know exactly what this might be and are open to suggestions. If you have any ideas or would like to assist with such a venture please contact Rob Coulthard on 07838 194624 or e-mail robert.coulthard@icloud.com

Youth Club News

AGES 5 TO 16

Come and Join Us

ENFORD
VILLAGE HALL

Every Friday Night 6 – 9pm

No need to book - just turn up
£1 per week

(membership required after initial visit)

Youth Club is about having fun at the end of the week

YOU decide what **YOU** want to do!

Come and join us, all welcome!

For more information Call: Bruce Carter – 07872 335579

There was a recent committee meeting and AGM attended by representatives from Wiltshire Youth Action and the Nationwide Bank. A presentation was given concerning an exciting joint initiative whereby selected youth groups within Wiltshire will aim to achieve a National Ambition Quality Mark. If this pilot scheme is successful then this will be rolled out nationwide.

It was explained that to achieve this quality mark Enford will have to attain certain standards of youth activity and organisation involving 8 elements at firstly Bronze level. The benefits include insurance, a slice of the funding, pride in E&AVYC, increased confidence for parents in that the club will have a national award status (soon to become statutory for every youth group in the UK).

FORTHCOMING EVENTS

In October there will be free attendance for members to the Bonfire night on Friday 31st (in lieu of our usual Halloween party).

In November one of the senior youth club members will give a reading at the Remembrance Service at All Saints Church, Enford on Sunday the 9th and the club will be laying a wreath, as usual made by the members.

In December there will be carol singing through the village starting at the community hall and ending at the Swan pub on a date to be arranged.

On Friday the 12th the children will be carol singing at the carol service at All Saints Church. It is hoped that there will be further carol singing in the week to be arranged in Netheravon.

PLEASE NOTE There will be NO Youth Club at the Community Hall on the 17th of October due to a prior booking.

Volunteers Needed For Enford and Avon Valley Youth Club

We are a thriving local voluntary youth club with a current membership of 40 young people. Club activities run every Friday evening with additional sessions organised sporadically throughout the school holidays and at weekends.

If you would like to help local young people take part in activities that develop their interpersonal and practical skills we would love to hear from you. You may have an interest in crafts or sports or you may be able to help us with running our club through our youth club committee.

You will have the opportunity to lead sessions, volunteer with our dedicated team, complete accredited training and support a wide range of local young people.

An enhanced DBS check and reference will be required.

For an informal discussion about the volunteer role simply contact Andy Lucker on 07799 140460 or email andylucke@yahoo.co.uk



Has Strictly Come Dancing on the television left you wanting to try it yourself?

No problem - just pop along to Phoenix Hall, Netheravon, Wednesdays at 6.30pm to master the Waltz, QuickStep, Cha Cha Cha and Tango as well as many more of the dances you see on a Saturday night!
No partner needed!

FitSteps is a fun dance class based on the moves from Strictly, and put together by Strictly professional dancers Ian Waite and Natalie Lowe which will get you spinning around in no time at all!

No previous experience needed and beginners are always welcome.

Classes begin Wednesday 1st October - 6.30pm

Selaine Saxby





Avon Valley Practice

Do You Need a Flu Jab?

If you are:



**Aged 65 year or over
A carer
Pregnant**

If you have:

**Chronic respiratory disease
Chronic heart disease
Chronic kidney disease
Chronic liver disease
Chronic neurological disease
Diabetes
Immunosuppression**

You are eligible for a Flu Vaccination on the NHS

Appointments will be available to book from 29th September
First appointment available on 13th October

ENFORD GARDENING CLUB

PROGRAMME Autumn 2014

Thursday 9th October

Elisabeth Young

Adventures in Gardening – a Travelling life

Elisabeth has gardened in many countries at home and abroad and is bringing photographs to illustrate her talk. She is a plantswoman with enormous knowledge and experience.

Thursday 13th November

Monica & Jess Ashman

Demonstration on how to propagate and take cuttings

December – no meeting

All meetings take place in Enford Village Hall

6.45 for 7.00

Tea & coffee available and plants for sale

Entrance fee: £3.50

GARDENING CLUB MEETING REPORT

At the September meeting of the Gardening Club, Ray Broughton gave us a very interesting talk on House Plants. As well as how to grow and care for them, he gave us some fascinating tips.

We were shown slides of plants to grow in and out of the greenhouse, we were told to beware of watering from the bottom of the plant as this can cause the plant to rot off if you leave it standing in water, over 90% of house plant deaths are caused by over-watering! Ray described how to make a thermometer that measures the air temperature in a greenhouse more accurately, and how to clean our secateurs with tomato ketchup. Just stand the secateurs upright in a container, pour the ketchup over the blades and leave them over-night. The following morning wash off, thoroughly dry the blades and oil in the usual way.

The Gardening Club look forward to seeing a host of people at the next meeting on Thursday 9th October when Elizabeth Young will speak on Adventures in Gardening – A travelling life.

We look forward to welcoming lots of people for our series of interesting talks this autumn.

Please do not hesitate to contact the secretary, Fanny Middleton (01980 671645), if you would like a lift to the Village Hall.

Further details from Fanny Middleton, 01980 671645

email fannysurtees@btinternet.com

ALL SAINTS CHURCH, ENFORD

www.avonriverteam.org.uk

CHURCH SERVICES

October

5th Holy Communion, 9.00am
 12th United Team Service, Milston, 10.30am
 19th Family Service, 10.30am
 26th Evensong, 6.00pm

November

2nd Holy Communion, 9.00am
 9th Remembrance Sunday, 10.30am
 9th Messy Church, 4.00pm
 16th Family Service, 10.30am
 23rd Evensong, 6.00pm
 30th Team Advent Carol Service

CHURCH CLEANING ROTA

October

3rd Gai Rickett & Lowenna Harbottle
 10th Lyn Riche & Fanny Middleton
 17th Amanda Murray & Mary Burdick/
 Patti Hall-Smith
 24th Sue Poole-Warren & Hilary Horsford
 31st Tanya Becker & Linda Mundy

November

7th Paula de Chalus & Amanda Marx
 14th Gai Rickett & Lowenna Harbottle
 21st Lyn Riche & Fanny Middleton
 28th Amanda Murray & Mary Burdick/
 Patti Hall-Smith



ENFORD CHURCH

Sunday 12th October

At 4 pm

Come and join us

Church for all ages

Play games, celebrate God, be fed! Lots of crafts

Children Must Bring An Adult!

Want to know more?

01980 653953

admin@avonriverteam.org.uk



So that we can make sure we have enough craft and food please do let us know if you are coming

Getting Older! - Mark Zammit (Rector)

The Government defines those who are aged between 65 and 74 as “Third Agers”, a rather quaint term but which has become fairly normal usage. Someone has suggested that those aged between 75 and 84 should be called “Fourth Agers”, but this is not a government designation!

The number of churchgoing people in their Third Age in England is significant, however. In 2014 the number was just over half a million people, a number likely to stay about the same over the next few years as there are a good supply of churchgoing folk aged between 55 and 64 who are steadily joining them!

There are also a large number of people in their “Fourth Age” or older who attend church as well. In total there were 400,000 75 or over churchgoers in 2010, and likely to be 440,000 by 2015 and 470,000 by 2020. The increase is both among those who are aged 75 to 84 and those who are 85 or older.

Third Agers (including Fourth Agers) are sometimes known as the SWELL generation – Seniors With Energetic and Lively Lifestyles! In 2010 those who were 65 and older comprised about a third, 30%, of all churchgoers, that is, across all ages. But the number of older people is increasing faster than those joining who are younger, so the proportion of the elderly increases – up to 36% in 2020, and 42% by 2025. By then half of those 65 and over will be Third Age, 65 to 74, and the other half will be 75 and over, if trends turn out to be correct.

The background knowledge of Christianity seen in these older people will change over these years. In 2005, 43% of church attendees between 65 and 74 had attended Sunday School when they were children or teenagers, as had 48% of those between 75 and 84 and 54% of those 85 and over.

Many of these older people will be grandparents, even great-grandparents, and their influence on their grandchildren is known to be quite profound in terms of transmitting the faith from one generation to another, an area where perhaps the church could be more proactive. Some churches are appointing ministers for older people as their relative proportion in a church family increases. Perhaps the significance of Christian grand parenting might be included in such a role.



Enford Cycling

We will be starting an Enford Cycling Group to give riders of all experience the opportunity to explore some of our beautiful local countryside. The first of these will be on Saturday 4th October and will be held every four weeks, on a Saturday, starting from the Swan at 0930.

Route for the first ride will be to Woodborough Garden Centre where we will break for a coffee, and return having cycled 15 miles.

Weather permitting, we will run these every 4 weeks on the first Saturday of the month. If you are interested, please contact Nigel Murray on either 01980 671684 or by email at nigel.murray@spitfireuk.net – or indeed just turn up on the day.”



<http://www.wiltshire.gov.uk/council/parishnewsletterhome.htm>

Did you know that Wiltshire Council publishes a weekly parish newsletter which provides information about their work. It contains brief summaries of key reports, consultations and news with links to further information on their website.

The latest newsletter contains the following: consultation on garden waste collections, bus pass consultation, broadband workshops, volunteers needed to join the team at Stonehenge, free electric blanket testing and an International Older People's Day. There are also links to other websites about what is happening in Wiltshire

NHS IN WILTSHIRE

What is the future for NHS services in Wiltshire?

Wiltshire Clinical Commissioning Group is led by local GPs. We plan and pay for the majority of NHS services that you use across the county. Over the next five years, we know that demand for NHS services in Wiltshire will continue to increase but the money we have available to spend on these services will not increase at the same rate.

Modern advances in healthcare are helping people to live for longer than ever before which is a cause for celebration. However, this does mean that the demand for NHS services from the over-65s is expected to increase significantly over the coming years. As a result, the CCG needs to adapt the way we provide NHS services so that they better meet the needs of our ageing population.

How can you get more involved?

The CCG has already been carrying out a wide-ranging consultation about our Five Year Plan across the county and this has included public meetings, outreach events, and presentations to a variety of organisations. You may have been involved in one of these events?

Over the next few months the CCG will be giving presentations at the 18 Area Boards across the county. Each Area Board is planning a health fair with lots of different stalls for you to visit followed by presentations from the CCG and Wiltshire Council about our plans for improving health and social care. To find out the date of the Health Fair in your area please visit www.wiltshire.gov.uk/council/areaboards/healthfairs

We hope you can join us for your local Area Board Health Fair but if you are not able to attend then you can find out more about the CCG's plans at <http://www.wiltshireccg.nhs.uk/>

If you'd like to talk to someone at the CCG then you can email WCCG.info@nhs.net or call **01380 728899**

One Day From Our Travels from Hong Kong to Vancouver via Japan and the Aleutian Islands

After a long spell at home through our rather damp winter we headed off to Hong Kong to begin a trip of a lifetime through the Aleutian Islands to Alaska and Vancouver.

Rather than bore you all with the whole trip I thought I'd write several small pieces (and maybe bore you for even longer)!!

I love the wildlife on our trips whereas Terry loves the history and architecture so this was definitely a trip for both of us.

I'd wanted for a very long time to see the biggest grizzly bears in the world. They inhabit one of these islands, Kodiak, which is part of Alaska. Although it was May when we arrived, when the bears are just coming out of winter hibernation, I had researched some bear-viewing companies before we left home to see if anyone might be able to take us to see them. Normally visitors go in July/August when the rivers are teeming with salmon coming home to spawn. Then the bears are in plentiful supply sitting in the rivers catching the salmon as they make their way upriver.

We were much too early for this spectacle but one family-owned company got back to me to say they would be happy to take us bear viewing if they had seen any about.

On our arrival at Kodiak Island we were met by the son, a pilot, who informed us that he had seen 4 bears on the beaches just the day before, scavenging for anything they could find until the salmon began to arrive.

What followed was an experience I will never forget!

We boarded a seaplane, a very exciting experience in itself, and flew out into the wilderness, soon swooping down over beaches on the far side of the island and across to Katmai National Park. Before long we landed in a cove and cruised round a peninsula and there on the beach was our first grizzly. He stood on hind legs when he first saw us and then carried on his job of digging up clams. Our pilot, Kirk, 'docked' the plane and invited us to step out onto the beach. Rather nervously we did, me being careful to keep Kirk between the bear and myself. Quite who would have flown the plane back should anything have happened I hadn't figured out! However, he assured us we were posing no threat and all would be well. If we had produced fishing rods and started fishing it would have been rather different. We were astounded at how close we got to him before he reluctantly moved away up the beach. That was enough for me but over the next couple of hours we saw four more, all scavenging for clams and anything else they could find until the salmon arrived. I now yearn to go back one July and watch them fishing.

We then boarded the tiny little seaplane once more ready for take-off back to our boat ready for our next adventure.

Ann

Can we please have more about your adventures, Ann?



Enford, Chisenbury and Coombe **Ladies Christmas Supper**



The Swan Inn at Enford



Wednesday 10th December at 7.00pm for 7.30pm

The cost for the evening is £23 per head and includes a Festive Welcoming Drink, a Three Course Supper, Red and/or White Wine with your Supper followed by Tea Coffee and Mince Pies

If you would like to attend, please fill in the form below to reserve a place and return it by 26th November with a £5.00 deposit to:

Lyn Riche, Willow Brook, Water Lane, Enford, 01980670489

The balance of £18 is due on the night!



We do hope that you will join us for this festive occasion



Name:.....

Address:.....

Telephone:.....Email:.....

MENU— simply full of deliciousness!!!!
(please circle your selections)

Starters: a choice of

- Roasted Sweet Pepper and Fennel Soup
- Butterfly Tiger Prawns with a Coconut Crumb and sweet Chilli Mayonnaise
- Warm Smoked Duck Salad with Cranberry Chutney

Main Course: a choice of

- Traditional Roast Turkey with all the Trimmings
- Baked salmon Fillet with Champagne Cream
- Slow Cooked Blade of Beef with a Rich Port Jus
- Roasted Vegetable Filo Parcel served over a light Tomato Pesto Sauce

Puddings: a choice of

- Rich Christmas Pudding served with a Creamy Brandy Sauce
- White Chocolate and Raspberry Crème Brûlée
- Christmas Pudding Parfait with a Fruit Coulis

If you have any questions please do not hesitate to call Lyn on 01980 670489 or Ruth Wilkinson on 01980 670550.



ENFORD DEFIBRILLATOR

PLEASE READ THE ENCLOSED LEAFLET CAREFULLY AND KEEP IT SOMEWHERE SAFE BUT VISIBLE

ONE DAY IT COULD BE ONE OF YOUR FAMILY, A FRIEND, A NEIGHBOUR OR EVEN YOU WHO NEEDS HELP

Q DO YOU KNOW THAT WE HAVE OUR OWN DEFIBRILLATOR

Q DO YOU KNOW WHERE IT IS?

A THE VILLAGE DEFIBRILLATOR IS IN A YELLOW BOX ON THE WALL OF HILL HOUSE, 9 LONGSTREET, SN9 6DD GRID REF; SU142515.

IT IS LOCATED IN THE CENTRE OF ENFORD, 25M NORTH OF THE SWAN INN NEXT TO THE PARISH NOTICE BOARDS.

Q DO YOU KNOW WHAT IT'S FOR?

A USING A DEFIBRILLATOR ON SOMEONE WHO IS HAVING A SUDDEN CARDIAC ARREST CAN SAVE THEIR LIFE

Q DO YOU KNOW HOW TO ACCESS IT?

A WHEN YOU PHONE THE AMBULANCE SERVICE THEY WILL GIVE YOU THE CODE TO GET INTO THE CABINET

YOU CAN READ MORE ABOUT IT AT, WWW.ENFORDNEWSLETTER.ORG WHERE YOU WILL ALSO FIND A LINK TO A SHORT VIDEO SHOWING YOU HOW TO USE IT.





AMESBURY TOWN BAND



AUTUMN CONCERT



SATURDAY 18TH OCTOBER



7.30 pm Amesbury Methodist Church

£7 adults, £4 Children (includes tea and cake)

Tickets from Amesbury Community shop, Saturday Coffee morning at Amesbury Methodist Church (10am to 11:30am) or 01980 670362.

Proceeds to Amesbury Methodist Church Building Fund and Town Band

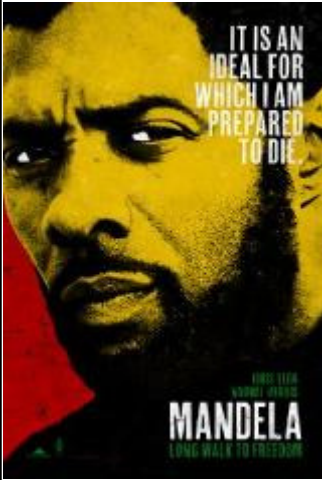
Wiltshire Ride & Stride

On Saturday 13th September, 18 members of the Parish had a thoroughly enjoyable day cycling and raising money for Wiltshire Historic Churches, with half the money raised going to our own church.

The weather was perfect and the “peloton” cycled from Enford church to and from Bulford Church visiting Durrington, Milston, Figheldean, Netheravon and Fittleton churches before adjourning to the Swan for an excellent “cycleman’s” lunch put on by Pete and Emma.

Everyone finished the 14 miles in good heart so congratulations to all who took part. A total of £585 was raised by both participants and supporters – a great effort by all.”





ENFORD FILM CLUB

Enford Village Hall
Tuesday 28th October
7.30pm

**MANDELA
LONG WALK TO FREEDOM**

A chronicle of Nelson Mandela's life journey from his childhood in a rural village through to his inauguration as the first democratically elected president of South Africa.

Doors open at 7.00 pm

Drinks available from the Bar

Tickets £5.00 each booked in advance and £6.00 on the night

Lifts can be arranged for anyone who would like to come
If you wish to join the Mailing List, would like to book tickets, or need a lift,
please contact 01980 670501 or email enfordvillagehall@btinternet.com

CONGRATULATIONS

to

Upavon Village Shop

**Congratulations to Cheryl and Michael on winning Devizes
Constituency Independent Shop of the Year 2014.**

**As a daily customer, I can assure you they are the best village
shop.**

Upavon, be proud!

***Doreen Fay
West Chisenbury***



Fairtrade Fayre

Saturday 18 October
The Bowman Centre, Archers Gate
10am to 3pm
Free entry

Lots of Fairtrade& ethically sourced goods from around the world
Fairtrade fashion show, Quiz, Raffle
Opportunity to taste different Fairtrade goods
Refreshments and...

Fairtrade Bake Competition

The challenge:

To make a cake, pudding, biscuits or other bake using at least two Fairtrade ingredients

Bring your creation to the FairtradeFayre by 1.30pm. The winners will be announced at 2pm. First prize: a £10 voucher to be spent at the Fayre.

Details:

Entries should contain at least two Fairtrade ingredients - which should be listed, along with your name, age (if under 18) and contact details.

The more Fairtrade ingredients the better! Please be imaginative and creative. Any number of entries is allowed. You will be able to reclaim your entry after judging. There is no charge for entry.

What is Fairtrade?

Fairtrade is about better prices, decent working conditions, local sustainability, and fair terms of trade for farmers and workers in the developing world. The Fairtrade mark is an independent consumer label you see on a product that meets the international Fairtrade standards. It shows that the product has been certified to offer a better deal to the farmers and workers involved.

Organized by the Stonehenge Deanery Fairtrade Group
Any queries/ offers of help, please call Pip Symonds on 01980 670782.

Village Hall & Recreation Ground

FILM NIGHTS

Autumn Season

Oct 28th "Mandela - Long Walk to Freedom"

Nov 25th Title to be confirmed

enfordvillagehall@btinternet.com

**Planning a Children's Christmas Party?
Celebrating a special birthday or anniversary?
The Village Hall is the perfect venue!**

Day	Activity	Time	Contact
Mon	Yoga Beginners' Class Yoga Intermediate	6.00pm – 7.15 pm 7.30pm–9.00pm	Emma Petitt 01980 670510 yoga@emmapetitt.co.uk
Tues	Enford Film Club	4th Tuesday in the month Doors open 7.00 pm	Judy D'Arcy Irvine 01980 670501
Wed	Body Conditioning & Bootcamp	6.15 pm – 7.15 pm	Helen Gould-Cooper 01980 670324 h.gouldcooper@virgin.net
Wed	Short Mat Bowls	7.30 pm – 10.00pm	David Spencer 01980 670526 spencersgb@yahoo.co.uk
Thu	Pilates	8.45 am – 9.45am	Nicci Caswell 01980 625245 Work nicccaswell@btopenworld.com
Thu	Camera Club	8.00 pm – 9.00 pm 1st Thursday in the month	Martin Webb 01980 670537 webb14@btinternet.com
Thu	Gardening Club	6.45 pm – 8.45 pm 2nd Thursday in the month	Fanny Middleton 01980 671645 fannysurtees@btinternet.com
Fri	Youth Club	6.00 pm – 9.00 p.m.	Bruce Carter 01980 670006
Sat	Children's Sports Football Coaching Sessions	10.00am -11.00 am Recreation Ground	Ollie Stagg 01980 670634 olliestagg@wessexwater.co.uk
Sun	Red Lion Football Club	Recreation Ground	Ian Fribbins ian.fribbins@btinternet.com

YOUTH CLUB We would love to hear from anyone who is interested and who can commit to a Friday evening once a month, weekly or fortnightly.

ENFORD FOOTBALL CLUB is running weekly Saturday morning Junior Football Sessions. Contact Ollie Stagg 01980670634 for further information and to join in!

Wiltshire Police

Ludgershall and Rural Neighbourhood Policing Team

Your team consists of:

PC 1719 Tim Bunt

PCSO 6078 Maria Downham

PCSO 3998 Rosie Smith

E-mail tidworthnpt@wiltshire.pnn.police.uk



The dark nights are soon coming
There's a chill upon the air
There's no lighting in your garden
You just cannot see who's there.

Is there someone in the darkness
Trying doors and windows too?
Will you be the burglar's victim?
NO! There's something you can do!

Lock your doors and windows
Lock up that old shed too,
And when you park and leave your car
Take all valuables *avec vous*.

Don't let strangers in your house
Keep handbags hidden too
Always check these things are done
Before to bed go you.

Have a light beside the front door
And in the garden too
Do all of these suggestions
And it's no burglar for you!

Amanda Clarke

Crime Prevention Salisbury

Reported incidents:

There were no incidents reported in Enford or Chisenbury.

Community Beat Manager Writes:

There have been two drugs warrants executed in the area in the past month, which resulted in five arrests for possession or cultivation. I shall continue the war against drugs in whatever way I can, but I need information from you, the public, to succeed.

Tim Bunt



SALISBURY PLAIN TRAINING AREA

October 2014

**Defence
Infrastructure
Organisation**

www.gov.uk/government/publications/salisbury-plain-imber-range-perimeter-path

STOP PRESS

The Salisbury Plain Twitter handle #modonthepain now has over 400 followers and this number is continuing to grow. If you'd like to follow us go to:
www.twitter.com/mod_dio

TRAINING

October starts with the Land Warfare Centre Armoured Troop Commanders Course Exercise FIRST VIEW training with Challenger 2 Tanks across the West and into the Centre on the 1st & 2nd October. At the same time 26 Engineer Regiment will start a 2 week Armoured Engineer battle run, and Armoured Infantry Companies from 1st Battalion The Royal Welsh and 1st Battalion The Yorkshire Regiment will conduct armoured manoeuvre training in Warriors.

11th – 17th October 1st Battalion The Royal Welsh and 101 Logistics Brigade will rehearse for and conduct the Land Command Power Demonstration exercise for the Joint Staff College Shrivenham. This will involve an Armoured Battle Group manoeuvring in the West and logistic stands around Old Carter Barracks near Bulford. At the same time the Armoured Infantry Course from Warminster will conduct Exercise RARDENS REVENGE in Warrior Armoured Vehicles across the Plain.

Throughout the latter half of the month an Armoured Cavalry Squadron from the Royal Dragoon Guards will be practicing their reconnaissance drills across the whole Plain in CVRT vehicles.

101 Logistics Brigade are due to conduct Exercise GRIFFIN VIPER for 3 weeks from 6th – 25th October which will involve three logistic regiments with some 180 heavy wheeled transport and load carrying vehicles running convoys across the whole Plain and making extensive use of the track system and tank crossings over main roads.

A very busy final week in which the 2nd largest Armoured Exercise TEAM SPIRIT from the Land Warfare Centre incorporating the Brigade Reconnaissance course final exercise; BADGERS STRESS will take place. They will be joined by a Squadron of CVRT from the Royal Tank Regiment, an Armoured Engineer Squadron from 22 Engineer Regiment, a Multi Launch Rocket System Battery from 39 Regiment Royal Artillery and a Company of Omani troops preparing for Exercise WESSEX STORM in November.

Heavy use of Armoured vehicles during the month day and night will mean that the public are advised to restrict their recreational activities to the public rights of way and privileged tracks. If moving off them on foot then additional care should be taken to avoid disrupting military training and placing themselves at risk. Motorists are advised that the tank crossings on all major public roads transiting the Plain will be in regular use and that mud sweepers will be operating on the roads if the weather turns foul.

Late firing on Larkhill Ranges on: : 2, 7, 9, 14, 16, 18, 21, 23, 28, 30 September

Live firing on Salisbury Plain (East): Nil

AS90 Firing from Tilshead, Chitterne, Shrewton triangle : Nil
Complaints about Firing Noise should be made to (01980) 620819.

Information about low flying is available from the MOD Low Flying Advisory Service (0845 600 7580) or **on line at www.gov.uk/low-flying-in-your-area** .

Upcoming Major Exercises. During exercise access may be restricted on Larkhill Ranges and in the Chitterne – Shrewton – Tilshead Triangle north of the B390.

Larkhill/Westdown Ranges No firing is planned for **4, 5, 11, 12, 25, 26**

Note: Due to the risk of “cook off” from unexploded ordnance the range is closed during fires.

Bulford Ranges No firing is planned for **4, 5, 11, 12, 18, 19**

ACCESS

Access to SPTA is regulated by Salisbury Plain Military Lands, Bulford, Larkhill and Imber Range Byelaws. Always comply with local signs and flags. Rights of Way located in Range Danger Areas are closed when red flags are flying.

Imber Ranges The public are excluded except when the roads are specifically opened.

Event	Open	Closed
Remembrance Service	Sat 8 Nov	Convoy from Warminster gate at 1000.
Christmas & New Year	1600 Thurs	18 Dec to 0800 Mon 5 Jan.

1. Even when roads are open the village and buildings remain out of bounds to the public.
2. Dates may change if operational training needs dictate.
3. Church opening times can be found at **www.imberchurch.org.uk**.

WHAT CAN YOU DO TO REDUCE CRIME ON SALISBURY PLAIN?

If a crime is taking place e.g. hare coursing call 999 and do not challenge the offenders. Report suspicious activity to PLAINWATCH (01980 674700) or PLAINWATCH@landmarc.mod.uk.

The more information received the better e.g. time, place, vehicle registration, description of individuals and vehicles.

- Do not touch or tamper with Military debris.
- Wash your hands before you eat.
- Clean your footwear before you enter your car or home.

J Maden
WO2 (CSM)
for Senior Training Safety Officer Salisbury Plain

Advertising

Advertising

in
The Enford Newsletter

£20 per 1/8 page for 10 issues
£45 per 1/3 page for 10 issues

Please contact Gay Monk
01980 670540



CI0079

M.A.B HEATING



307264

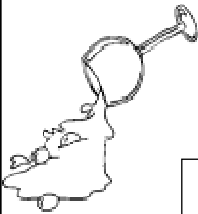
Boiler and Heating Services

Oil, Gas and LPG

Very competitive charges for boiler servicing and breakdowns
Boiler Replacements
Professional and friendly service
7 Days a week inc Bank Holidays

Please call Mark on:

Tel: 01747 828689 or Mobile: 07974 249287



OOPS HAPPENS!

Time to call **Clean Living** carpet and upholstery cleaners
Where Really Clean Really Matters!

****SPECIAL OFFER****

For 10% off quote Enford when booking

For your **FREE SURVEY** call Steve
on **01980 621621**



Mrs Mitchell of Enford is delighted with our quality and service.

Avon Security

MASTER LOCKSMITHS

Engraving Service
Now Available

- > Brass
- > Plastics
- > Aluminium
- > Glass
- > Trophies
- > Gifts

Free Advice &
Quotations
On Securing
Your Property
& Belongings

Key Cutting
Locks Supplied & Fitted
Access Control
Safes
PVCu Locks
Master Key Systems
Lock Repairs
Door Furniture & Ironmongery
Transponder Car Keys
Keys To Code
Watch Batteries & Straps
Emergency Call Out Service



01980 626000

21, Salisbury Street, Amesbury, Wiltshire, SP4 7AW

www.avonsecurity.net





Red Lion East Chisenbury

Yummy Mid-Week Deal

Take advantage of our prix fixe lunch menu!
2 Courses for £16 or 3 for £20
Available lunchtime every day Monday-Friday
Same fantastic food at a friendly village price

Book with us on **01980 671124**

D Taylor

Bricklayer & General Builder

All Building Works
Including Extensions, Garden Walls, Patios,
Roof Repairs, Plastering
Floor & Wall Tiling etc

01980 554008
Mobile No: 07719 916854



Pet Care Services

Putting All Your Pet's Needs

DOG WALKING

HOME SITTING

PET TAXI

PET SITTING

FULLY INSURED



FRIENDLY RELIABLE SERVICE

Tel: 01980 670261

Mob: 07969 284913

Email: wags2whiskers@live.co.uk

Hope and Faith Wedding Services

Planning & Co-ordination of your
Wedding or Event
Venue Decoration
Hire Services

Contact us for details of what we can do
for you

www.hopeandfaithweddings.co.uk
enquiries@hopeandfaithweddings.co.uk
Tel: 07835773714



Zumba Mon 1830 £5.00 per class
FitSteps Wed 1830 £4.50 per class
Fitness Yoga Wed 1915 £4.50 per class
Both Wed classes on same night £7.00

Phoenix Hall, Netheravon
Contact Selaine
07801 427358



Coombe Electrics

Repairs, alterations. New consumer units. Condition reports for landlords and insurance purposes. Fault finding, etc.

Reliable and professional service. No call-out charges for local area. All work fully certified and in accordance with wiring and building regulations.

Call Steve on 07508 621120
or 01980 670345, or email:
steve@becker.globalnet.co.uk



Avon Small Saints Pre-School

Open to 2- 5 year olds

Whole and part day sessions plus lunch club available
Monday—Friday during school hours term time only
We follow the Early Years Foundation Stage Curriculum
and our children enjoy learning through play

For more information, please contact Elka Priddin on:

01980 671681 www.avonsmall Saints.co.uk

Ofsted Reg. No. EY338057 Reg. Charity No. 1033639

GRAHAM BUCKLAND SERVICES

General building maintenance: plumbing, Carpentry, glazing, brickwork, etc
Free quotes and reasonable rates

'Man with a Van' hire.
Removals and House Clearance
Undertaken

Tel: **01980 670870**
or **07831 889 666**

ELSTON VETERINARY CLINIC

ELSTON LANE, SHREWTON
Dr. Enid Frantilla, DVM MRCVS
Small Animal Medicine and Surgery
Providing high quality pet healthcare
and a caring, friendly professional service
HELPING YOU TO HELP YOUR PETS!!
Consultations by appointment, Mon-Sat
For appointments or enquiries, and
24 HOUR EMERGENCY SERVICE
01980 621999

Southern Chimney Services

CHIMNEY SWEEPING & SURVEYS
POTS&COWLS FITTED
FLUE LINER INSTALLATIONS
BURNER INSTALLATION

FOR RATES & APPOINTMENTS
CALL PETE ON 07432 899715

TIM BUCKLAND BOILER MAINTENANCE

FOR SERVICE AND BREAKDOWNS

Friendly and efficient service
Wide stock of boiler spares in stock

VERY COMPETITIVE PRICES

Also AGAs and RAYBURNS serviced

Tel: 01980 625846

KD WORSDELL

Carpentry & Joinery
Building Works & Maintenance
Bathrooms and Kitchens

Please Call
01980 630545
Or
07759 586162

ABSOLUTE LANDSCAPES

Mr Wayne Bawden
City & Guilds qualified (Horticulture)

'Professional, experienced local landscaper'
Drives / Patios / Paths / Decking / Fencing
Hedge Cutting & Reduction
Lawn Replacement (turf or seed)
Complete Landscape of Gardens
Renovation and Restoration.
Portfolio of work done available on request.
Free estimates, please call Wayne
01980 671726 / 07795 058379

Sarah Faber
Your local contact for

Rose Petals

Your Local Interflora Florist

47 Estcourt Road
Salisbury, Wiltshire, SP1 3AS
Tel: 01722 321840

Web: www.rosepetalssalisbury.co.uk
Email: info@rosepetalssalisbury.co.uk

OIL FIRED BOILERS

For prompt reliable –
**SERVICING
REPAIRS
COMMISSIONING**

Call Tim Walsh

Tel. **01980 652803**
Mobile **07919603884**

**RGV ENGINEERING
(NETHERAVON) Ltd**
High Street, Netheravon
01980 670667
**Specialists in Plumbing,
 Heating and Electrical Works**
Also Boiler Servicing and Commissioning

Interested in renewable Energy?
 Please see our website for details
 Www.rgvengeering.co.uk
GAS SAFE*OFTEC*NICEIC*ECA

**MODERN & TRADITIONALLY
 DESIGNED MEMORIALS**
M J SLY
Monumental Stonemason

*New Memorials, Additional Inscriptions
 Restorations, Free Home Visits
 Free Brochure*
Marlborough (01672) 516797
 Email: martin@mjsly.co.uk
 Website: www.mjsly.co.uk
*Workshop & Showroom at Pelham Court,
 London Road,
 Marlborough, Wiltshire*

Comprehensive Piano Tuition

I am a friendly, trained piano teacher offering lessons customised to meet the needs and abilities to all ages and stages from beginner up to Grade 8 Help to pass Music Theory Grades 1-5 is also available!

First lesson FREE!!!
If interested, call Elizabeth on
07541377267 or 01980671691.
 It's never too late to learn!



B REPAIRED
Musical Instrument Repairers

Graham & Yvonne Ballard
The Music Studio 8 Thurlow Close
Amesbury Nr. Salisbury
Wiltshire SP47QG
01980 625380
07957 806401/2
 www.brepaired.co.uk

“PAMCAKES”

*Bespoke Cakes for your special occasions (any age group).
 Traditional and 3D, cupcakes and some Wedding Cakes. See my FB page “Netheravon’s Pamcakes” for more details/pictures contact pamcakes@writeme.com or call 07919656141*

**THE OLD POST OFFICE B&B
 EVERLEIGH ROAD, HAXTON**
 Double, twin, single & family suites

Call Jackie to book on
01980 671 640 / 07715 419 600
 www.theoldpostoffice-wiltshire.co.uk

Oil Boiler
Servicing, Commissioning & Repairs

CALL
GRAHAM C BROWN & SON
01980 622737
Est. 1982

**FULLY QUALIFIED
 FULLY INSURED
 EXPERIENCED TECHNICIAN**



Registered Business

Science Tuition
 Qualified Science Teacher and Examiner
 Science GCSE and Chemistry at A level and IB

Helping you get the grades you need.

For more details contact Ellen Oades on 01980 671760 or 07881 206507

Tina's Hairdressers

High Street, Netheravon
Unisex Salon
Tel: 01980 670628

Tue 9-5 Wed 9-2 Thurs 1-7
Fri 9-6 Sat 8.45-2

TIPZ & TOEZ
nails now available
Appointments not always necessary

Phil Wakeford GARDENING & LANDSCAPING



Landscape Construction · Pruning Fruit Trees & Roses
Garden Maintenance & Advice · Lawn Mowing
25 Years Experience · Flower Meadows

01980 670718 07194412396

Bits & Pieces (Durrington Ltd)

BUILDING, GARDENING & DIY

PETS, PANELS, AGGREGATE

37 - 39 Bulford Road, Durrington
Wiltshire SP4 8DL
Tel: 01980 655552
Fax: 01980 652351

Proprietors: P & M Conn

GDB TECHNICAL SERVICES LIMITED Computer/IT support

Small business and Home users
Networking issues/installations
PC Problems
Tuition
General IT advice/help
Upgrades/Data Recovery
Service Support Options

Call 01980 623052 or visit
www.gdbts.com to see if we can help.

M NASH & P WILKINS

*ALL LANDSCAPING WORK UNDERTAKEN
FENCING*PATIOS*PATHS*PONDS*
BRICKWORK
HEDGE CUTTING*GARDEN CLEARANCE
GRASS CUTTING*

Tel: MIKE 01380 840767
Mobile: 07977 950654
Tel: PAUL 01380 840763
Mobile: 07970 557002



*All aspects of tree care and hedge maintenance
professionally undertaken*

ESTABLISHED IN 2000

Free Quotations and Fully Insured

01980 670032 07712 006706

Salisbury Garden Machinery



For all your garden machinery needs.

Sales-Service-Repair-Hire
22 Newton Rd, Churchfields, Salisbury. SP27QA.
www.salisburygardenmachinery.co.uk 01722 322414

AGRICENTRE

*Now stocking Frontline for cats and
dogs at an unrivalled price
Excellent products at an excellent
price from well-known horse
wormers
Electrical fencing
Complete range of Briswim pool
chemicals*

FREE HOME DELIVERY!

Contact: Justin Young, A.M.T.R.A.,
SQP (Branch Manger)
07850 184111 / 01722 320316



WILTON CARPETS

JonCard

Your local contact for:

**Great Carpets
Great Choice
Great Prices**

**Full Measuring, Estimating
& Guaranteed Fitting**

**Email: joncard@wiltoncarpets.com
01722 742733**

PEST CONTROL SERVICE

*RABBITS, RATS, MOLES
WASPS, SQUIRRELS
BIRD PROOFING*

CALL NIGEL

**01980 670804
07854 828904**

YOGA CLASSES ENFORD VILLAGE HALL EVERY MONDAY

**Beginners/Gentle yoga 6.00—7.15pm
Intermediate Yoga 7.30—9.00pm**

**For details of other yoga classes visit
yoga@emmapetitt.co.uk
Emma on 01980 670510**

SEAN DEVINE PAINTER & DECORATOR



**Free estimates. Fully insured.
For local professional service call:
01980 630864 or 07870 454884**

ENGLISH COUNTRY GARDENS

LOGS

All sound dry wood
Beech, Oak, Ash, Sycamore, Elm, Apple, Yew

**Loads (Small) £60 (Large) £105
Extra Large Load £140
5 bags £25**

**Kindling wood 5 bags for £22.50
Stacking available -ask for price
Call Nick 07835299247**

Tutoring In Your Own Home

11+
English/literacy
Maths/Numeracy

**For a free initial assessment
Contact Beth on
07521266298 or 07999446982
elizabethgrisdale@gmail.com**

THE MOTOR GARAGE LTD

**Max Rowley
Manager**

**Telephone: 01980 670348
Mobile: 07970 785284**

**www.themotorgarage.co.uk
max@themotorgarage.co.uk**

**The Motor Garage
Netheravon, Salisbury, Wiltshire, SP4 9RH**

Soft Furnishings

by Helen Judd
**Loose covers
Cushions
Curtains
Roman blinds
Fabric sales**

**For further information call:
Tel: 01980 625 442
Mob: 07971 028 972**

VILLAGE COMMITTEES

PARISH COUNCIL

Chairman	Norman Beardsley (Rights of Way)	670860
Vice Chairman	Nigel Murray	671684
Parish Clerk	Elizabeth Harrison	670034
Councillors	Michael Fay	670553
	Jane Young (Parish Hall)	670532
	Anthony D'Arcy Irvine (Rep Tidwort & Pewsey Area Boards/Village Hall)	670501
	David Harbottle (Roads and Highways)	670932
	Richard Petitt (Planning Committee/ Parochial Church Council)	670510
	Gareth Holden (PR/Press Officer)	671195
	Bruce Waight	670113
	Pat Holdway	671792
	Richard Roberts (Police/NHW)	671005

NETHERAVON SCHOOL

Chairman of Governors	Fanny Middleton
Head Teacher	Hayley Humphris

PAROCHIAL CHURCH COUNCIL

NEWSLETTER

Chairman	Tanya Becker
Vice Chairman	Linda Mundy
Secretary	Linda Mundy
Treasurer	Ros Perry
Advertising	Gay Monk
	Jacqui Elkins
	Jane Young
	Ann Houghton
	Clare Burge
	Kriss Mitchell

Church Wardens	John Poole Warren
	Henry Middleton
Treasurer	Gill Gould
Secretary	Amanda Murray
Council Members:	John Manser
	Jonathan Walsh
	Judy D'Arcy-Irvine
	Bruce Carter
	Frank Horsford
	Mary Burdick
	Gai Rickett
	Sue de Candole

VILLAGE HALL

Chairman	Judy D'Arcy-Irvine
Vice Chairman	Steve Becker
Treasurer	Hannah Tucker
Secretary	Kriss Mitchell
PC Rep	A D'Arcy Irvine
Youth Club	Jane Young
Camera Club Rep	Jane Young
Football Club Rep	Ollie Stagg
PCC Rep	Judy D'Arcy-Irvine
Newsletter Rep	Jacqui Elkins
Booking Officer	Judy D'Arcy-Irvine (670501)
Property Officer	David Spencer
Grounds Officer	Hamish Scott Dalgleish

PARISH HALL

Chairman	Richard Petitt
Treasurer	Bob Taylor
Secretary	Gareth Holden

ALL SAINTS CHURCH Team Rector

Reverend Mark Zammit

01980653953
07733 077957

zammitparish@yahoo.co.uk

FOR YOUR DIARY October 2014

1st	Wed	
2nd	Thu	Household & Garden Waste/ Circuits, Parish Hall, 7.00pm
3rd	Fri	Youth Club, 6.00pm,Village Hall
4th	Sat	Youth Football Session, 10.00pm, Enford Playing Fields
5th	Sun	Holy Communion , 9.00am
6th	Mon	
7th	Tue	Quiz, The Swan
8th	Wed	
9th	Thu	Recycling / Circuits, Parish Hall , 7.00pm / Gardening Club, Village Hall, 6.45 for 7.00pm
10th	Fri	Youth Club, 6.00pm,Village Hall
11th	Sat	Youth Football Session, 10.00pm, Enford Playing Fields
12th	Sun	United Team Service, 10.30am, Fittleton / Messy Church, Enford Church, 4.00pm
13th	Mon	
14th	Tue	Quiz, The Swan
15th	Wed	
16th	Thu	Household & Garden Waste /Circuits, Parish Hall , 7.00pm
17th	Fri	NO YOUTH CLUB
18th	Sat	Youth Football Session, 10.00pm, Enford Playing Fields / Fairtrade Fair, Bowman Centre, Archers Gate, 10.00am—3.00pm / Amesbury Town Band Concert, Amesbury Methodist Church, 7.30pm
19th	Sun	Family Service, 10.30 am
20th	Mon	Newsletter Committee Meting, 7.30pm Coombe Lane
21st	Tue	Film Club, Village Hall, 7.30pm / Quiz, The Swan
22nd	Wed	
23rd	Thu	Recycling / Circuits, Parish Hall, 7.00pm
24th	Fri	Youth Club, 6.00pm,Village Hall
25th	Sat	
26th	Sun	Evensong, 6.00pm
27th	Mon	
28th	Tue	Film Club, Village Hall, 7.00pm for 7.30pm / Quiz, The Swan
29th	Wed	
30th	Thu	Household & Garden Waste /Circuits, Parish Hall , 7.00pm
31st	Fri	Halloween, Bonfire & Fireworks, Enford Playing Fields, 7.00pm

