



# Enford Newsletter

December 2014 / January 2015



# Happy Christmas



**ENFORD NEWSLETTER      CONTENTS**

Children’s Christmas Party	3
Camera Club Calendar/Cycling	4
Village Hall & Recreation Ground	5
Film Club/Message/Carol Singing	6
Christmas Notices	7
Project Workshops/Fishing/Junior Football Coaching Sessions	8
Remembrance	9
World War I Commemoration	10
All Saints Church	11
Youth Club	13
Gardening Club	14
Parish Council News/Flooding	15
Neighbourhood Watch	17
Enford Community Fund	18
Summer Fete Date	19
All Saints Primary School/ Messages	20
Our Travels - Shanghai, South Korea and Japan	21
Day at The Tower of London	22
Policing	23
Advertising	24
Village Committees	31
December Diary	32

**The next Newsletter  
Deadline is**

**FRIDAY  
23RD JANUARY 2015**

All items for inclusion, whether they are handwritten, typed or via e-mail, **MUST be submitted by the date of the meeting.** These articles may be handed in to any Newsletter Committee member.

**Please send e-mails to  
tanya@stbecker.plus.com**

Enford Newsletter Committee reserves the right to reject or omit from publication any material that is considered by majority of Committee Members to be detrimental to any person or which is not in the best interest of the community as a whole. All letters and articles must be signed, but the Committee will withhold the name of the writer if this is requested at the time of sending it in.

**ENFORD DEFIBRILLATOR**

**The defibrillator is in a yellow box on the wall of Hill House, 9 Longstreet, SN9 6DD  
Grid Ref SU142515.**

**It is located in the centre of Enford 25 m north of The Swan next to the parish notice boards.**

**When you phone the Ambulance Service they will give you the code to get into the cabinet.**

**YOU CAN READ MORE ABOUT IT AT,  
WWW.ENFORDNEWSLETTER.ORG  
WHERE YOU WILL ALSO FIND A LINK  
TO A SHORT VIDEO SHOWING YOU  
HOW TO USE IT.**



**JUMBLE SALE**

**Parish Hall  
Saturday 31st January**

**2.00pm**

**In aid of Enford Church  
Lych Gate**



# Children's Christmas Party

**A FREE EVENT  
JOINTLY PROVIDED BY THE ENFORD COMMUNITY FUND  
AND THE ENFORD VILLAGE HALL COMMITTEE**

**DATE: SATURDAY 13<sup>TH</sup> DECEMBER**

**TIME: 2.00 pm TO 4.30p**

**WHERE: ENFORD VILLAGE HALL**

**WHO FOR: ALL CHILDREN AGED 0 to 11 WHO LIVE  
IN THE PARISH OF ENFORD**



**A party for your children with tea, fun and games and a special guest appearance (guess who??!!)**

**Please register your child's name and age with Katie on  
01980 670573**



**For entry you must book  
(so Santa knows who is coming!)  
RSVP before 7<sup>th</sup> December**



# Hope you can make it!





**Salisbury Plain Calendar 2015**  
by  
**Enford Camera Club**

**Over 30 superb colour photos  
showing the Salisbury Plain area at its best!**

**Now on sale. Only £6.**

**Please contact Martin Webb  
01980 670537  
enfordcameraclub@btinternet.com**



**ENFORD CYCLING**

Enford Cycling Group aims to give riders of all experience the opportunity to explore some of our beautiful local countryside.

Weather permitting, we will run these every 4 weeks on the first Saturday of the month.

The next meeting will be on Saturday 6th December November at 9.30am. The route will suit most abilities and will be from the Swan to a coffee stop and back - in the region of 15 miles.

If you are interested, please contact Nigel Murray on either 01980 671684 or by email at [nigel.murray@spitfireuk.net](mailto:nigel.murray@spitfireuk.net) - or indeed just turn up on the day."

# VILLAGE HALL AND RECREATION GROUND

Come and join in some of the many activities and clubs taking place in our Village Hall.

You can learn about photography and gardening, keep fit by attending Pilates, Keep Fit or Yoga classes and have a night out at the monthly Film Club night. The Youth Club takes place, weekly, on a Friday night and on Saturday there are football coaching sessions for the children .

You will also meet neighbours and friends.

**FILM NIGHTS**

**Tuesday January 27th**

**Tuesday February 24th**

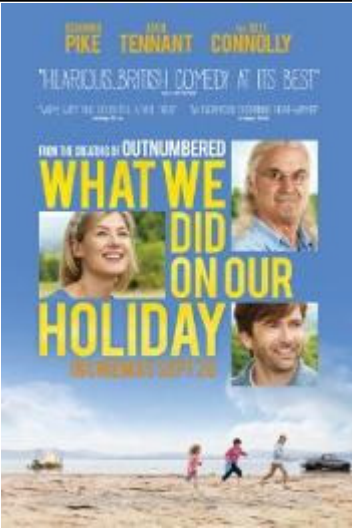
**Tuesday March 24th**

**enfordvillagehall@btinternet.com 01980 670501**

Day	Activity	Time	Contact
Mon	Yoga Beginners' Class Yoga Intermediate	6.00pm – 7.15 pm 7.30pm—9.00pm	Emma Pettitt 01980 670510 yoga@emmapettitt.co.uk
Tues	Enford Film Club	4th Tuesday in the month Doors open 7.00 pm	Judy D'Arcy Irvine 01980 670501
Wed	Body Conditioning & Bootcamp	6.15 pm – 7.15 pm	Helen Gould-Cooper 01980 670324 h.gouldcooper@virgin.net
Wed	Short Mat Bowls	7.30 pm – 10.00pm	David Spencer 01980 670526 spencersgb@yahoo.co.uk
Thu	Pilates	8.45 am – 9.45am	Nicci Caswell 01980 625245 Work nicccaswell@btopenworld.com
Thu	Camera Club	8.00 pm – 9.00 pm 1st Thursday in the month	Martin Webb 01980 670537 webb14@btinternet.com
Thu	Gardening Club	6.45 pm – 8.45 pm 2nd Thursday in the month	Fanny Middleton 01980 671645 fannysurtees@btinternet.com
Fri	Youth Club	6.00 pm – 8.00 p.m.	Bruce Carter 01980 670006
Sat	Children's Sports Football Coaching Sessions	10.00am -11.00 am Recreation Ground	Ollie Stagg 01980 670634 olliestagg@wessexwater.co.uk
Sun	Red Lion Football Club	Recreation Ground	Ian Fribbins ian.fribbins@btinternet.com

**YOUTH CLUB** We would love to hear from anyone who is interested and who can commit to a Friday evening once a month, weekly or fortnightly.

**ENFORD FOOTBALL CLUB** is running weekly Saturday morning Junior Football Sessions. Contact Ollie Stagg 01980670634 for further information and to join in!



**ENFORD FILM CLUB**  
**Enford Village Hall**  
**Tuesday 27th January 2015**

# What We Did On Holiday

**Starring David Tennant, Rosamund Pike  
 and Billy Connolly**

**The film explores the meaning of life and  
 suggests how best to live and love.**

**Doors open at 7.00 pm**

*Drinks available from the Bar*

**Tickets £5.00 each booked in advance and £6.00 on the night**

Lifts can be arranged for anyone who would like to come  
 If you wish to join the Mailing List, would like to book tickets, or need a lift,  
 please contact 01980 670501 or email [enfordvillagehall@btinternet.com](mailto:enfordvillagehall@btinternet.com)

## **Carol Singing Around Netheravon**

A group of people will be knocking on doors and singing carols on Wed 17th December – some local residents plus members of Enford & Avon Valley Youth Club.

If you'd like to join us please do. We'll be starting from The Vicarage at 6.00pm, finishing at the Dog & Gun and singing a few carols there around 7.30 pm.

If you would like to come or have any questions please ring Pip Symonds on 07854 827233"



**HAPPY CHRISTMAS**

**Brenda Skinner would like to wish all  
 her friends in Enford and Coombe  
 a very Happy Christmas!**





**Christmas**  
**Coffee Morning**  
**& Bring and Buy**

Saturday 6th December  
 at River Cottage  
 Fittleton  
 10.30 - 12.00

Entrance £2

Gifts \* Raffle \* Cakes \* Preserves  
 In aid of Fittleton Church



# PRIZE BINGO

To raise funds for Enford and Avon Valley Youth Club.

Sunday 7th December  
 Phoenix Hall, Netheravon  
 2pm - 5pm

Donations for prizes gratefully received



## Christmas Bazaar

Figheldean Village Hall  
 2-4pm  
**SUNDAY 7th DECEMBER**

This years' popular event is brought to you by:  
 St. Michael & All Angels Church  
 Over 60s Club  
 Avon/Bourne Valley Art Club

*Tea, coffee, light refreshments will also be available!!*

Admission is Free and crucially.....  
 Father Christmas will be here with his sack of toys!  
 \*\*Please support us - a must for all of the family!!\*\*




**Sandleheath Band**

with Amesbury Community Choir

**Christmas Concert**

**Saturday 6<sup>th</sup> December**

**7.30pm Amesbury Methodist Church**

*Tickets £5 from Amesbury Community shop, Saturday Coffee morning at Amesbury Methodist Church (10am to 11:30am) or 01980 622547*

## **Project Workshops Christmas Sale**

**Saturday 13<sup>th</sup> & Sunday 14<sup>th</sup> December 2014 10am – 4pm**

Come and enjoy relaxed Christmas shopping.  
Choose from handmade Glass, Furniture, Sculpture, Jewellery, Paintings,  
Metalwork and Pottery, all made by the resident Artists and Craftsmen.

Prices range from £2.50 - £10000

**FREE ENTRY & PARKING**

We look forward to greeting you with a glass of wine and a mince pie.

Please note, not all artists can accept credit cards

Project Workshops, Lains Farm, Quarley, Andover, SP11 8PX.

[www.project-workshop.co.uk](http://www.project-workshop.co.uk) Tel: 01264 889889

## **Chisenbury Fishing Syndicate**

Fly Fishing on 2.5 miles of the Upper Salisbury Avon  
for Brown Trout and Grayling

Membership Available for 2015

[www.chisenburyfishing.com](http://www.chisenburyfishing.com)



## **Enford Football Club Children's Coaching Sessions**



The next coaching sessions will take place on the field at Enford Village Hall on **December 6<sup>th</sup> and 13<sup>th</sup>**. There will be a break over the Christmas period and we will start again on **January 10<sup>th</sup> 2015**, and then on **January 17<sup>th</sup>, 24<sup>th</sup>, 31<sup>st</sup> and February 7<sup>th</sup> and 14<sup>th</sup>**.

The sessions run from 1000hrs until 1100hrs and they cost just £2:50 per child per session. Any child who wants to take part should be aged between 5 and 11 years old and they should bring their own shin pads, suitable footwear and a drink.

Ollie Stagg



## REMEMBRANCE SERVICE AT ENFORD CHURCH

Over 100 people gathered together at the Remembrance Service and Rededication of the Lych Gate at Enford Church on Sunday 9th November.

It was a clear, warm, perfect day which gave a sense of serenity and calm. How lucky we are that we were able stand together as friends and neighbours amongst the peace and beauty of our small village in the Wiltshire countryside.



Rev Mark Zammit led the service while, Jenine Cryle, a young bugler from The Royal Signals sounded The Last Post and Ute Schwarting from Salisbury played the keyboard.

The names inscribed on the tablets on the lych gate were read out, reminding us of how many from our small community never came back and the sacrifices that our local families made during both the First World War and the Second World War.

Wreaths were laid by Norman Beardsley, on behalf of the Parish Council, Col Tony Mitchell, on behalf of the Defence community and Charlie Carter on behalf of Enford and Avon Valley Youth Club

Rhys Teasdale read a very moving poem by Maria Cassee. Due to many requests it is written below for you to read.

The collection raised over £500 for SSAFA Wiltshire.

## REMEMBRANCE SUNDAY

On a cold November Sunday morn, an old man sits a while  
Looking though old photographs, he can't help but smile  
They're all there, all the boys, with hair cut short and neat  
Uniforms of khaki, strong black boots upon their feet.  
They met as strangers but soon became like brothers to the end  
Smiling at the camera, there could be no truer friends.  
They all took the Queen's shilling, went off to fight the Hun,  
Soon learnt the pain of loss once the fighting had begun.  
So many never made it home, lost on foreign shores  
Many more were injured and would be the same no more.  
The old man's eyes mist with tears as he remembers every face

He proudly dons his beret, his blazer and his tie  
 For today he will remember the ones who fell and died.  
 On his chest there is a poppy, a blaze of scarlet on the blue  
 He steps out into the cold, he has a duty he must do  
 Once at the cenotaph he stands amongst the ranks  
 Of those who marched to war and those who manned the tanks,  
 He bows his head in reverence, as the last post begins to play  
 And he wonders what will happen at the ending of his days  
 Will anyone remember? Will anybody care?  
 About the lads so far from home whose life was ended there?  
 I wish that I could tell him, that he should fear not  
 For this soldier and his brothers will NEVER be forgot  
 We owe a debt of gratitude that we can never pay  
 And this country WILL remember them, on each Remembrance day.

## Maria Cassee

The photograph of the newly refurbished lych gate carried out sympathetically and superbly by Peter Howcutt is reproduced with kind permission of Martin Webb from the Camera Club.

---

## WORLD WAR 1 – COMMEMORATION

It is hoped that, some time in the not too distant future, Enford and East Chisenbury can undertake a number of activities to commemorate the Great War.

The proposal for one of these activities is to trace information relating to several individuals from the area who are related in some way to current villagers. Although the names of those who did not return are listed in the Lichgate to the Church, I would also be interested in the stories of those who survived and then lived the rest of their lives in and around the area.

I would be interested to hear about any linkage with anyone who served in the war. Maybe you have some pertinent artefacts, medals, photographs etc. which might help me to build a picture and to bring the stories to life. If I can gain enough information I would like to put on a presentation some time in 2015 to pass on what I have discovered and in so doing remember the people of Enford and East Chisenbury who fought.

If you can help me with any information please contact Bob Taylor on 07909 870122 or e-mail [andrew.taylor698@hotmail.com](mailto:andrew.taylor698@hotmail.com)

We are also hoping to put on some kind of event/party/themed evening to commemorate WW1. We don't know exactly what this might be and are open to suggestions. If you have any ideas or would like to assist with such a venture please contact Rob Coulthard on 07838 194624 or e-mail [robert.coulthard@icloud.com](mailto:robert.coulthard@icloud.com)

### ALL SAINTS CHURCH, ENFORD

www.avonriverteam.org.uk

#### CHURCH SERVICES

#### December

- 7th Holy Communion, 9.00am
- 14th Team Service, Bulford, 10.30am
- 14th Messy Church, 4.00pm
- 12th Youth Club Carol Service, 10.30am
- 18th Crib Service, 4.00pm
- 21st Carol Service, 10.30am
- 24th Midnight Mass, 11.30pm
- 25th Family Communion, 10.30am
- 28th Evensong, 6.00pm

#### January

- 4th Holy Communion, 9.00am
- 11th Team Service, Netheravon, 10.30am
- 11th Messy Church, Netheravon School, 4.00pm
- 18th Family Service, 10.30am
- 25th Evensong, 6.00pm

#### CHURCH CLEANING ROTA

#### December

- 5th Sue Poole-Warren & Hilary Horsford
- 12th Paula de Chalus & Amanda Marx
- 19th Tanya Becker & Linda Mundy
- 26th BOXING DAY

#### January

- 2nd Paula de Chalus & Amanda Marx
- 9th Gai Rickett & Lowenna Harbottle
- 18th Lyn Riche & Fanny Middleton
- 23rd Amanda Murray & Mary Burdick/  
Patti Hall-Smith

### ENFORD CHURCH

Sunday 14th December - At 4 pm

And

### NETHERAVON SCHOOL

Sunday 11th January - 4pm



#### Church for all ages

Play games, celebrate God, be fed! Lots of crafts Children must bring an adult!

Why not come and join us and discover more?

01980 653953

[admin@avonriverteam.org.uk](mailto:admin@avonriverteam.org.uk)

So that we can make sure we have enough craft and food,  
please do let us know if you are coming

## LETTER FROM MARK ZAMMIT—Rector

Back in August when a number of churches were commemorating 100 years since the outbreak of the First World War, I remember using some words from the Book of Ecclesiastes: For everything there is a season, and a time for every matter under heaven. These verses cover a wide range of human experiences, as originally intended by the writer. Particularly pertinent for me at the moments are the lines: a time to plant, and a time to pluck up what is planted.

It hardly seems possible that nearly seven years ago I arrived in, what is now, The Avon River Team, and yet within only a few weeks we shall be all packed up and ready to move again; this time to Yorkshire where our daughter lives with her husband and expanding family. Becoming grandparents has had a profound effect on our lives and, such is the lot of church ministry, God has a strange way of presenting challenges and opportunities. We will be moving to the parish of Almondbury with Farnley Tyas located about 5-6 hours drive north depending on the benevolence of the M1, on the outskirts of Huddersfield. The diocese to which we are moving is new, and somehow reflects something of the geographical landscape: West Yorkshire and the Dales. I was told very clearly at interview: "If you come here...you will need a vest."

It has been a very real privilege to serve as Rector in this part of Wiltshire and to share in the lives of many people in those years. Sharing in the events of your lives has been joyful through the Services of marriage and baptisms. It has been moving to share in the times of sorrow that many of you have experienced over the years as we also tried to give thanks for what has been and in the hope of what will be.

It has been a privilege to be involved in the development of the new Team Ministry covering seven distinct parishes, and it is reassuring to know that plans are still being developed to forge closer links between these parishes whilst maintaining their individuality. I leave at a time of expected further change for the Team, with army re-basing on the horizon and an expected large building programme soon to make itself felt. I suppose this is where I ponder those verses about planting and plucking up – we are constantly sowing and reaping in order to be sustained – and that is what God does for us.

Thank you for the many good wishes and thanks I have already received from people in the villages. As yet the date for my final service has not been settled, but will be either 1<sup>st</sup> or 8<sup>th</sup> February – but this will be the last editorial I shall be writing this side of the Watford Gap.

I look forward to this new chapter in our lives – new parochial challenges and more time with family - and yes, looking after our grandchildren!

With love and prayers,  
Mark.

---

## BONFIRE NIGHT—THANK YOU MANDY AND TEAM

A huge thank you to Mandy Farrow and her support team for another great evening. The firework display gets bigger and better every single year and the weather could not have been better.

A huge thank you on behalf of everyone who went.

# Youth Club News

AGES 5 TO 16

Come and Join Us

ENFORD  
VILLAGE HALL

Every Friday Night 6 – 8pm

No need to book - just turn up  
£1 per week

(membership required after initial visit)

Youth Club is about having fun at the end of the week

**YOU** decide what **YOU** want to do!

**Come and join us, all welcome!**

For more information Call: Bruce Carter – 07872 335579

## FORTHCOMING EVENTS

**Saturday 6th , Girls only Activity Day 10-16yrs old  
Devizes Leisure Centre**

**Activities including**

**Archery, Street Dancing and Swimming.**

**This activity is in conjunction with Youth Action Wiltshire and will involve other youth from the county between 1-5pm.**

**Friday 12th the children will be carol singing  
at the Carol Service at All Saints Church Enford.**

**Wednesday 17th the children will be carol singing in Netheravon starting at the Vicarage and ending up at The Dog & Gun between 6.00-7.30pm.**

## **THANK YOU TRACY SOUTHARD AND FAMILY**

Enford and Avon Valley Youth Club would like to thank Tracy Southard and her family for organising and running a Tombola and table top sale at the recent Netheravon Christmas Fair which raised a very impressive £163.

This money will go towards funding the activities that the club are planning for 2015.

Proceeds from the fair will go in aid of Macmillan Cancer Support to which the Youth Club contributed.



# ENFORD GARDENING CLUB

## PROGRAMME Spring 2015

**Thu January 8<sup>th</sup> - AGM and Social**

**Thu February 12<sup>th</sup> - Birds in the Garden**, *Steve Oakes, Wiltshire Wildlife Trust*

**Thu March 15<sup>th</sup> - Clematis**, *Marcus Dancer*

**Thu April 9<sup>th</sup> - Vegetables, question & answer session**, *Rupert Wade*

**Thu May 14<sup>th</sup> - British Wild Flowers in Nature and in the Garden**  
*Robert Harvey*

**Thu June 11<sup>th</sup> - Garden Visit to the Priory, East Chisenbury**  
*By kind invitation of John & Tessa Manser*

There will be no meeting of the Gardening club in December but our January meeting - Thursday 8<sup>th</sup> January - will be the AGM and Social at 7.00 pm. Do come and join us and give your feedback from the year's meetings, as well as enjoy a post Christmas glass of wine.

We hope you will share our enthusiasm and come and join us on the second Thursday of the month at 7.00 pm in the Village Hall.

**All meetings take place in Enford Village Hall SN9 6DD**  
**6.45 for 7.00**

**Tea & coffee available**

**Entrance fee: £3.50** We look forward to welcoming you.

Lifts can be arranged so please ask.

Further details from Fanny Middleton, 01980 671645

email [fannysurtees@btinternet.com](mailto:fannysurtees@btinternet.com)

### **GARDENING CLUB MEETING REPORT—THURSDAY 13<sup>th</sup> NOVEMBER 2014**

The Garden Club had a lovely evening on the 13th with Monica and Jess Ashman from Wild Thyme Nursery in Frome . A mother and daughter combo.

Jess talked us through taking cuttings and propagating plants and then we were allowed to put what we had learnt into practice there and then. They kindly provided plants, pots and compost and the Village Hall was quickly transformed into a Potting Shed as people set to work.

The Ashmans were bombarded with questions and there was lots of laughter too.



All in all a very informative and jolly evening.



## PARISH COUNCIL NEWS

### Affordable Housing

In September, Wiltshire Council sent a survey to all households in the Parish asking for their views on additional housing in Enford Paddock. 33% of the Parish households responded and although there was some support for additional housing in Enford, the majority were against the proposal due to the inappropriate location and lack of public transport considered necessary for this type of development.

Accordingly, the Parish Council voted on the matter in support of the majority and recommended to Wiltshire Council that any such plans be dropped. If you have any questions on this, or would like further details please contact one of the Parish Council.

### Floods

Steve Crompton, Flood Warden had not received any contact from Wiltshire Council regarding training, equipment supplies etc despite contacting them on several occasions.

It was suggested that the Parish Council should investigate the cost of buying sand and bags in order to provide a first line of response, Bruce Waite offered storage space and a hopper to fill bags. Richard Roberts will obtain costs. (See also, below, extract from Tidworth and Pewsey Community Area Newsletter)

### Play Park

Several maintenance issues were raised for the Play Park, Michael Fay will continue to deal with these.

Details of the topics discussed can be found in the minutes of the meeting displayed on the village notice boards and at [www.enfordnewsletter.org](http://www.enfordnewsletter.org).

### Preparing for Flooding - 21 November 2014

*Extract from Tidworth and Pewsey Community Area Newsletter (Wiltshire Council)*  
Residents who know their homes are located in places that are naturally at risk of flooding are being urged to prepare for wet weather in the coming months. Around 500 homes were flooded in Wiltshire last winter.  
The latest three-month outlook from the Met Office suggests it will be wetter than average until the end of January, with weather fronts coming from the Atlantic Ocean, and a series of Atlantic storms sweeping across the country. Flooding is a natural event and no drainage or flood protection system can give absolute immunity. But simple measures can make all the difference.  
When flooding strikes, there is often little time to respond. That's why residents who know they may be at risk should have a contingency plan in place for how they can best protect themselves and their families, as well as their homes and possessions. Simple preparations, such as knowing how to turn off the electricity, gas and water supply in your property, and having key contacts programmed into your mobile phone, can make all the difference in a flooding incident.

Flash flooding can occur when heavy rain falls over a short period of time. The ground cannot absorb this amount of water quickly enough, drainage systems are overwhelmed and flooding occurs. This flooding is normally short-lived and often there is very little notice.

Within Wiltshire there are also areas where the substructure of the land is made up of different layers of rock, which hold water. If it rains continuously for a long period they discharge the excess water into streams, rivers and springs causing groundwater flooding, days or weeks after the rain.

In places like Tisbury, experts know the flooding will occur four days after the heavy rain. As the water saturates down through Salisbury Plain, the water table naturally equalises itself, which means the floodwater rises up out of the ground as it tries to align itself with the water levels on the plain.

Jonathon Seed, cabinet member for flooding said: "Last winter we saw people pull together locally to help vulnerable neighbours in times of need and enact flood plans to minimise the disruption. I would urge people living in areas which we know are prone to flooding to do all they can to protect their homes in advance. We will continue to work with our partners throughout the winter to ensure the often devastating disruption caused by flooding is kept to an absolute minimum."

The Environment Agency website – [www.environment-agency.gov.uk](http://www.environment-agency.gov.uk) – provides detailed updates about flooding. The site also includes details of how you can sign up for regular email or phone flood alerts. You can also sign up by phoning Floodline on 0845 988 1188 or Typetalk 0845 602 6340. It also offers a step-by-step guide to developing your household's own personal flood action plan.

As a property owner it is your responsibility to protect your property from flooding. Removable flood gates and covers for air bricks will often be effective in keeping water out for the vital few hours that water rises.

The council is unable to supply sandbags to individuals in advance of any flood warnings but towns and parishes can bid for defence equipment including sandbags under the Parish Emergency Alleviation Scheme. Individuals should proactively make their own arrangements to purchase sandbags, which are available from builders' merchants.

The council has a limited supply of sandbags and any requests for them during an emergency will be considered on a case-by-case basis and prioritised by level of need or vulnerability – for example the elderly or infirm and the protection of commercial property to prevent environmental pollution.

If you are in imminent danger of flooding telephone the council on 0300 456 0105 or out of hours call 01722 413834.

If you live in a known flood area your parish council will have been encouraged to develop a flood plan and recruit flood wardens.

### **Wiltshire and Swindon Community Messaging**

Wiltshire and Swindon Community Messaging has now launched in the Tidworth community area, including Enford. Residents are now able to sign up for free messages - by text, email or voicemail - about policing and crime matters in their neighbourhood. They will also be able to reply to messages, feeding back information to their local neighbourhood officers to help them in policing their local area.

Joining Wiltshire and Swindon Community Messaging is quick, simple and free. There are no contracts, costs or obligations of any kind for anyone who signs up.

To join Wiltshire and Swindon Community Messaging or to find out more visit [www.wiltsmessaging.co.uk](http://www.wiltsmessaging.co.uk)

Wiltshire and Swindon Community Messaging will NOT be monitored 24 hours a day. People should always call 999 in an emergency or 101 in a non-emergency.



## **NEIGHBOURHOOD WATCH SCHEME – NEW COORDINATORS REQUIRED**

I have recently picked up the baton from Steve Becker and taken responsibility as the Area Coordinator for our local Neighbourhood Watch Scheme. I believe the scheme can play an important role in helping to protect our community. Since starting I have discovered how very fortunate we are in experiencing very low incidents of crime and anti social behaviour within our parish when compared to some surrounding areas.

I have joined the Neighbourhood Tasking Group, at these meetings I can discuss any concerns we may have directly with our local Police. I have also registered with two other schemes, the Neighbourhood & Home Watch Network, which coordinates schemes nationally and the recently launched Wiltshire Police initiative, “Community Messaging” which is designed help the police engage, inform and involve communities in policing and crime matters, for more information or if you would also like to sign up visit [www.wiltsmessaging.co.uk](http://www.wiltsmessaging.co.uk) Finally to capture as much information as possible I have signed up for the Farm and Horse watch messaging service.

There are a few vacancies for NHW coordinators to cover East and West Chisenbury, New Buildings and Paddock Close. All you need is an observant eye to any unusual or suspicious activity or individuals. Please contact me if you are interested or have any questions on 01980 671055 or email [chick.roberts@btopenworld.com](mailto:chick.roberts@btopenworld.com)

Enford parish is a great place to live with a fantastic community spirit, let’s try and keep it as crime free as possible by looking out for each other.

## **CARERS IN WILTSHIRE**

### **“A carer is ...**

Someone who without payment, provides help and support to a partner, child, parent, relative, friend or neighbour who could not manage without their help. This could be due to age, physical or mental illness, substance misuse, an eating disorder or disability.”

This definition is given by the Charity **Care Support Wiltshire** who offer not just support to those who care for others but through the Charity’s efforts they can also offer much more, for example –

- \* an interactive website with news updates and useful information.
- \* Complementary therapies for relaxation.
- \* Training and educational workshops.
- \* Access to counselling.
- Support through your GP
- 

To find out more you can telephone **0800 181 4118** or

Go to their website at **[www.carersinwiltshire.co.uk](http://www.carersinwiltshire.co.uk)**

## **Enford Community Hallowe'en and Fireworks Event 2014**

This year we were blessed with some super late autumn weather for our annual Hallowe'en and Fireworks Night, which took place on Friday 31<sup>st</sup> October. With the event actually falling on Hallowe'en itself, it being the end of half term break and the evening being warm and dry everyone was in a party mood and there were nearly as many adults in fancy dress as there were children! Overall attendance was the highest since the inaugural event in 2008, there were record numbers entering the fancy dress and no less than 37 carved pumpkins! Well done to everyone who entered. Food and drink was in high demand with both the bar and the BBQ selling out by the end of the evening.

Steve and Mike from SmART Pyro put on the most magnificent firework display; most people thought it was the best it has ever been. SmART Pyro are now both British and International firework display champions, a much deserved accolade and we are sure that everyone would want to join in sending congratulations and our thanks for their continued support. Without their generosity, the fireworks could not be such a success.

No event can take place without the help of many very kind volunteers and our thanks go to: Barry Chamberlain for another superb "Guy" ; everyone who helped to build the bonfire; Andy and Clare Lucker, for the difficult task of judging the pumpkins; Paula De Challus and Carol Manning, who had the tricky task of judging the fancy dress; Richard Petitt, Margaret and Martin Webb and Simon for all the hard work on the BBQ; Simon and Mary Campbell, Ollie Stagg, Linda Mundy, Debbie Brown, Aimee, Ollie and all others who helped with the drinks stall; Bruce Carter, Martin and Steve on the gate and of course our ace parking team of Hamish Scott-Dalgleish, Norman Beardsley and David Spencer, who had one of the hardest tasks of all to get the enormous number of cars safely in and out of the car parking field. Our thanks also go to the Village Hall Committee for the use of the hall and grounds; Bridget Holden for producing the notice boards, Team Red Lion for again supplying the onions for the BBQ and everyone who stayed behind to help clear up. We would also like to thank the Youth Club, who gave up their Friday night slot for us.

### **The Enford Community Fund**

At the latest round of funding in September, the ECF received an application from the PCC for help toward the cost of the repairs to the Lych-gate and War Memorial at Enford Church. The application was unanimously approved and the sum of £1000 was awarded.

We would like to take this opportunity to remind everyone about the Enford Community Fund. The fund comprises all the profits from the fete and fireworks events and is there to help community projects within our parish, the Parish of Enford comprising Enford, East and West Chisenbury, Coombe, Compton, Fifield, Littlecot, Longstreet and New Town. So if you run, or are considering setting up, a project that might need help with initial costs or equipment, please get in touch.

The following guidelines will be followed in allocating funds

- 1 Awards will be considered every 6 months in March and September
- 2 Awards will be made for individual projects and are not designed to allow awardees to become reliant on the award on an annual/regular basis

- 3 Awards will be made to causes that benefit the community and not specific individuals
- 4 No awards will be made for greater than £1000
- 5 For any award to be granted there must be agreement by at least 75% of the funding committee

*Latest copies of the community fund accounts and list of awards and donations made to date is available on the Enford Community page of the Enford Newsletter Website*

**DIARY DATE 2015**

**SUMMER FETE  
AT  
ENFORD PLAYING FIELD**

**Saturday 27<sup>th</sup> June 2015  
1.00pm – 5.00pm  
Free Entry**

If you are interested in hosting you own stall at the fete or would like to help at the fete please contact Mandy Farrow.  
Email: [amanda.farrow@chisenbury.co.uk](mailto:amanda.farrow@chisenbury.co.uk) Telephone 671343

**CALLING ALL JAM  
AND PRESERVE MAKERS!**

If you are making jams, chutneys or other preserves, please spare a thought for our summer fete and maybe make an extra jar or two for the home produce stall!

**CALLING ALL GARDENERS!**

The home produce stall at the summer fete will desperately need supplies of plants to sell, so if you are splitting perennials this autumn, please consider potting up a few for the fete!

**DO YOU NEED A LIFT TO THE VILLAGE HALL?**

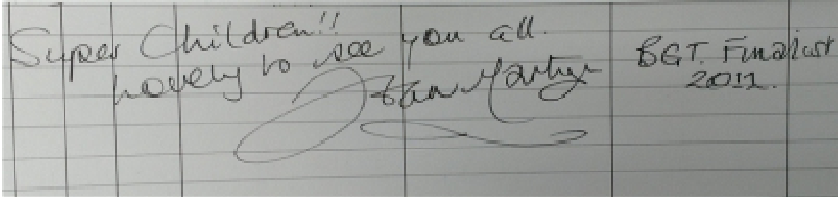
**If you would like to come to any of the clubs or events in the Village Hall but would like a lift or are worried about coming on your own, please call**

**01980 670501  
01980 670345  
email [enfordvillagehall@btinternet.com](mailto:enfordvillagehall@btinternet.com)**

**We will try and arrange for someone to pick you up and take you home.**

## **Britain's Got Talent 2011 Finalist Visits Netheravon All Saints Primary School**

The children at Netheravon All Saints Primary School were thrilled to welcome a very special visitor on Thursday 16<sup>th</sup> October. Jean Martyn, a Britain's Got Talent finalist in 2011, was visiting the area to perform in a concert at The Lights in Andover that evening. Jean has links with the Salisbury Plain Military Wives choir and their pianist, Kate Mason, Specialist Music Teacher at the school, convinced Jean to visit and perform to the whole school! Jean's exciting piano playing and stories of working with the stars totally enthralled the children and they enthusiastically joined in with her playing with clapping and singing and the occasional hand jive!



**CONGRATULATIONS**  
To  
**Andy and Clare Lucker**  
on the birth of their first grandchild  
**Jack Victor**

**CONGRATULATIONS**  
to  
**Suzanne and Butch**  
on the birth their granddaughter  
**Darcee Paige**

**FAREWELL**  
to  
**Janet and PK Kenny**  
We wish you good luck for the  
future in your new home

**GET WELL**  
to  
**Mrs Goodridge**

**CONDOLENCES**  
We were very sorry to hear of  
the death of Olive Fay. We  
would like to express our  
sympathy to all those who knew  
and loved her

**CONDOLENCES**  
to  
the family of  
**Rea Harling.**  
We send our sincere condolences

## Our Travels - Shanghai, South Korea and Japan

Shanghai was our next stop. We woke to find ourselves looking out at the beautiful Pudong city skyline. Magical!

After breakfast we set off to the station to experience the 'mag-lev' (magnetic levitation) train. Wow! The fastest train in the world, faster even than Japan's bullet trains, and we were lucky enough to be on the one that reached 432km per hour. A thrilling experience indeed!!

We then headed for the Jin Mao building and travelled very quickly up to the 88<sup>th</sup> floor for the fantastic views. This is the second tallest building in China and we stared in fascination at the tallest building in the world taking shape not far away, towering over the other skyscrapers and the Pearl Tower. Afterwards we strolled along the Bund, a promenade alongside the river, where there seemed to be a lot of wedding couples, a few turned out to be genuine newlyweds but most were just photo shoots, before exploring the shopping streets.

The next day we headed off to one of the water villages on the city outskirts called Zhujiajiao where we boarded a Chinese 'gondola' for a tour of this ancient place. We stepped back in time visiting old tea houses, the interesting old Post Office, still in its original condition, the pharmacy and merchants houses.

After a superb Chinese lunch we headed off to one of the silk factories to watch pure silk duvets being made. What started off as a fairly small bundle of silk thread soon became like a spider's web of silk held by a dozen people in a circle who then stretched it even more over a frame before doing the same again and again until a 6" or so thickness of silk built up. This was the filling - so light and yet so warm. (I'm beginning to sound like a TV advert!)

After dinner we headed out once more to sit and look at the magnificent skyline before carrying on our journey to Jeju, an island belonging to South Korea. On arrival there we spent the morning trying to get emails through to friends and family to update them on our whereabouts. Getting a signal down in an underground shopping mall was not easy and we finished up sharing a tiny area with 50 odd locals and 3 plastic chairs.

The town was a rather bland place with little to see but had verandas covering most of its streets to protect the people from the ash from the active volcano just offshore. Apart from that the underground shopping mall was the main attraction. We needed a lot more time to explore the island properly but had to leave after just a day to head on to Japan.

A couple of days later we pulled into our first port of call in Japan - Nagasaki. Of course most of the day was taken up with visiting Ground Zero and the Atomic Bomb Museum, a very graphic place with little left to the imagination. These places always leave me with an overwhelming sadness that we, as human beings never cease to find ways of destroying each other or ever learn from the effects of previous conflict. We met a survivor who was a small child when it happened and he told us of his experience that day and his life since.

To lighten our mood we took ourselves off to the Glover Garden, named after a Scot, Thomas Blake Glover, who had a huge influence on the modernisation of Japan mainly through shipbuilding and coal mining. Lots of young Japanese girls dressed in kimonos strolled around the Glover Residence, the oldest Western style house left in Japan, and its beautiful gardens.

Our second stop was Kagoshima, our first rainy day. After a tour around the town, finding the statue of Saigo Takamori, The Last Samurai, and visiting the lookout point at Shiroyama to view the smoking volcano offshore, the weather deteriorated and we decided to catch up on badly needed laundry.

Next stop - Osaka....

*Ann Houghton*

### **DAY AT THE TOWER OF LONDON**

We woke one gloomy Sunday morning in early November, packed our wet weather gear, snacks and camera and set off to The Tower of London for our shift as poppy planters. The weather improved as we neared London and our driver dropped us close to the Tower. We were running late because of the traffic and crowds so rushed to find our access point to the moat, only to find ourselves in a queue of some 140 like-minded volunteers.

On entry to the Tower wall we were shown to a room where we donned our Volunteer T shirts and watched a short video on exactly how to assemble the poppies, before being led outside to our station. Some of the team assembled the poppies by placing two washers and a spacer on a metal stem, then the poppy and a black cap to finish. Others in the team then planted them, drawing the poppy up the stem to the black cap which then formed the centre of the poppy.



Fortunately the rain held off and we finished our shift at 4.45pm and, along with most other people, made our way round to The Mound to hear the day's Roll of Honour read out before the Last Post was sounded.

It was a good day, mainly because of the camaraderie of the various teams of people, but also very poignant.

I will never forget my first glance over the wall that morning on the way to join the queue; over 800,000 'soldiers'

standing in the wet and muddy moat.

It was particularly poignant for me because my grandfather died in August 1918 and is buried in a small cemetery in Northern France. To be able to plant a poppy in his memory was such a special moment for me.

Ann

Thank You For a Great Day, Ollie  
from  
The Tower Poppy Volunteers

**Wiltshire Police**

Ludgershall and Rural  
Neighbourhood Policing Team

Your team consists of:

PC 1719 Tim Bunt

PCSO 6078 Maria Downham

[tidworthnpt@wiltshire.pnn.police.uk](mailto:tidworthnpt@wiltshire.pnn.police.uk)



There has been a sudden rise in shoplifting locally. In particular the rise relates to the number of people being caught who have actually paid for part of their shopping. It is not clear why thieves should steal part of the shopping basket and pay for the rest, perhaps it is in the knowledge that the store would go bankrupt if no one paid for anything, or it could be that the open plan of modern stores tempts people into acts they would not normally consider. The fact is it makes no difference in law whether a theft is accompanied by a bona fide sale; dishonestly taking goods from a store is a crime.

### Reported incidents:

In Grants Road, a parked car had the paintwork scratched. Offenders broke into a local barn and stole a compressor.

### Community Beat Manager Writes:

I would like to wish everyone a Merry Christmas and hope that this finds you all well. Since the last time I put pen to paper the weather has well and truly turned, the sun appears to be a thing of the past and we are drawing ever closer to the start of the new year! I have been here for 9 months now and am really pleased with the results that we have been achieving so far. We have been monitoring calls and crimes and this came in to force in May this Year. To date we have seen a reduction in calls and crimes on the area every month compared to last year. I am really pleased with this as I have created many logs and crimes with the proactive work that we have been undertaking.

In the last few months we have had several positive search warrants executed, one in Ludgershall for a man cultivating cannabis, which led to a court conviction and another in Tidworth which resulted in two men receiving cautions. I also have two persons on bail who travelled in to the area, one from Andover and one from London, who were looking to supply Class A drugs locally. Unfortunately this continues to be a problem, and we always need more help from the community to catch these persons and keep these substances off the street.

I have not been to as many of the parish meetings as I would of liked also, this is due to sickness at the station and I have been covering both Tidworth and Ludgershall areas. There will be a replacement on the way soon so it may free up some much needed time for me to attend all meetings and see you all.

The festive period brings with it new challenges, one of the biggest ones that we face is the problem with drink driving. Please remember that if you do go out and drink it's always best to get a taxi home.

I hope you all have a great Christmas and a Happy New year.

Tim Bunt

# Advertising

## Advertising

in  
The Enford Newsletter

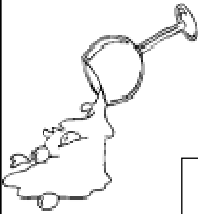
£20 per 1/8 page for 10 issues  
£45 per 1/3 page for 10 issues

Please contact Gay Monk  
01980 670540

## Local Freelance Florist

For all occasions including  
**Funerals, Weddings,  
Anniversaries**

For something special and  
personal at competitive rates  
call Kate on 07906 580361  
kcrobinson@hotmail.co.uk



## OOPS HAPPENS!

Time to call **Clean Living** carpet and upholstery cleaners  
Where Really Clean Really Matters!

**\*\*SPECIAL OFFER\*\***

For 10% off quote Enford when booking

For your **FREE SURVEY** call Steve  
on **01980 621621**



*Mr and Mrs Germany of Fifield are delighted with our quality and service.*

## Avon Security

MASTER LOCKSMITHS

Engraving Service  
Now Available

- > Brass
- > Plastics
- > Aluminium
- > Glass
- > Trophies
- > Gifts

Free Advice &  
Quotations  
On Securing  
Your Property  
& Belongings

Key Cutting  
Locks Supplied & Fitted  
Access Control  
Safes  
PVCu Locks  
Master Key Systems  
Lock Repairs  
Door Furniture & Ironmongery  
Transponder Car Keys  
Keys To Code  
Watch Batteries & Straps  
Emergency Call Out Service



### 01980 626000

21, Salisbury Street, Amesbury, Wiltshire, SP4 7AW  
[www.avonsecurity.net](http://www.avonsecurity.net)







# Red Lion East Chisenbury

## Yummy Mid-Week Deal

Take advantage of our prix fixe lunch menu!  
**2 Courses for £16 or 3 for £20**  
Available lunchtime every day Monday-Friday  
Same fantastic food at a friendly village price

Book with us on **01980 671124**

# D Taylor

## Bricklayer & General Builder

**All Building Works**  
**Including Extensions, Garden Walls, Patios,**  
**Roof Repairs, Plastering**  
**Floor & Wall Tiling etc**

**01980 554008**  
**Mobile No: 07719 916854**

# Wags & Whiskers

**Pet Care Services**

Putting All Your Pet's Needs

**DOG  
WALKING**

**HOME  
SITTING**

**PET  
TAXI**

**PET  
SITTING**

**FULLY  
INSURED**



**FRIENDLY  
&  
RELIABLE  
SERVICE**

Tel: 01980 670261

Mob: 07969 284913

Email: [wags2whiskers@live.co.uk](mailto:wags2whiskers@live.co.uk)

## Hope and Faith Wedding Services

Planning & Co-ordination of your  
Wedding or Event  
Venue Decoration  
Hire Services

Contact us for details of what we can do  
for you

www.hopeandfaithweddings.co.uk  
enquiries@hopeandfaithweddings.co.uk  
**Tel: 07835773714**



Zumba Mon 1830 £5.00 per class  
FitSteps Wed 1830 £4.50 per class  
Fitness Yoga Wed 1915 £4.50 per class

Both Wed classes on same night £7.00

Phoenix Hall, Netheravon  
Contact Selaine  
07801 427358



## Coombe Electrics

Repairs, alterations. New consumer units. Condition reports for landlords and insurance purposes. Fault finding, etc.

Reliable and professional service. No call-out charges for local area. All work fully certified and in accordance with wiring and building regulations.

Call Steve on 07508 621120  
or 01980 670345, or email:  
[steve@becker.globalnet.co.uk](mailto:steve@becker.globalnet.co.uk)



## Avon Small Saints Pre-School

Open to 2- 5 year olds

Whole and part day sessions plus lunch club available  
Monday—Friday during school hours term time only  
We follow the Early Years Foundation Stage Curriculum  
and our children enjoy learning through play

For more information, please contact Elka Priddin on:

01980 671681 [www.avonsmallsaints.co.uk](http://www.avonsmallsaints.co.uk)

Ofsted Reg. No. EY338057 Reg. Charity No. 1033639

**GRAHAM BUCKLAND SERVICES**

General building maintenance: plumbing, Carpentry, glazing, brickwork, etc  
Free quotes and reasonable rates

'Man with a Van' hire.  
Removals and House Clearance  
Undertaken

Tel: **01980 670870**  
or **07831 889 666**

**ELSTON VETERINARY CLINIC**

ELSTON LANE, SHREWTON  
Dr. Enid Frantilla, DVM MRCVS  
Small Animal Medicine and Surgery  
Providing high quality pet healthcare  
and a caring, friendly professional service  
**HELPING YOU TO HELP YOUR PETS!!**  
Consultations by appointment, Mon-Sat  
For appointments or enquiries, and  
**24 HOUR EMERGENCY SERVICE**  
**01980 621999**

**Southern Chimney Services**

CHIMNEY SWEEPING & SURVEYS  
POTS&COWLS FITTED  
FLUE LINER INSTALLATIONS  
BURNER INSTALLATION

FOR RATES & APPOINTMENTS  
CALL PETE ON 07432 899715

**TIM BUCKLAND BOILER MAINTENANCE**

FOR SERVICE AND BREAKDOWNS

Friendly and efficient service  
Wide stock of boiler spares in stock

**VERY COMPETITIVE PRICES**

Also AGAs and RAYBURNS serviced

Tel: **01980 625846**

**KD WORSDELL**

Carpentry & Joinery  
Building Works & Maintenance  
Bathrooms and Kitchens

Please Call  
**01980 630545**  
Or  
**07759 586162**

**ABSOLUTE LANDSCAPES**

Mr Wayne Bawden  
City & Guilds qualified (Horticulture)

'Professional, experienced local landscaper'  
Drives / Patios / Paths / Decking / Fencing  
Hedge Cutting & Reduction  
Lawn Replacement (turf or seed)  
Complete Landscape of Gardens  
Renovation and Restoration.

Portfolio of work done available on request.  
Free estimates, please call Wayne  
01980 671726 / 07795 058379

Sarah Faber  
Your local contact for



**Rose Petals**



Your Local Interflora Florist

47 Estcourt Road  
Salisbury, Wiltshire, SP1 3AS  
Tel: 01722 321840

Web: [www.rosepetalssalisbury.co.uk](http://www.rosepetalssalisbury.co.uk)  
Email: [info@rosepetalssalisbury.co.uk](mailto:info@rosepetalssalisbury.co.uk)

**OIL FIRED BOILERS**

For prompt reliable –  
**SERVICING  
REPAIRS  
COMMISSIONING**

Call **Tim Walsh**

Tel. **01980 652803**  
Mobile **07919603884**

**RGV ENGINEERING  
(NETHERAVON) Ltd**  
**High Street, Netheravon**  
**01980 670667**  
 Specialists in Plumbing,  
 Heating and Electrical Works  
 Also Boiler Servicing and Commissioning

Interested in renewable Energy?  
 Please see our website for details  
 Www.rgvengineering.co.uk  
 GAS SAFE\*OFTEC\*NICEIC\*ECA

**MODERN & TRADITIONALLY  
DESIGNED MEMORIALS**  
**M J SLY**  
*Monumental Stonemason*

*New Memorials, Additional Inscriptions  
 Restorations, Free Home Visits  
 Free Brochure  
 Marlborough (01672) 516797  
 Email: martin@mjsly.co.uk  
 Website: www.mjsly.co.uk  
 Workshop & Showroom at Pelham Court,  
 London Road,  
 Marlborough, Wiltshire*

**MOBILE HAIRDRESSER**

Ring Donna  
 on  
 07711 579403

**B REPAIRED**  
 Musical Instrument Repairers



Graham & Yvonne Ballard  
 The Music Studio 8 Thurlow Close  
 Amesbury Nr. Salisbury  
 Wiltshire SP47QG  
 01980 625380  
 07957 806401/2  
 www.brepaired.co.uk

**“PAMCAKES”**

*Bespoke Cakes for your special occasions (any age group).  
 Traditional and 3D, cupcakes and some Wedding Cakes. See my FB page “Netheravon’s Pamcakes” for more details/pictures contact pamcakes@writeme.com or call 07919656141*

**THE OLD POST OFFICE B&B  
EVERLEIGH ROAD, HAXTON**  
 Double, twin, single & family suites

Call Jackie to book on  
**01980 671 640 / 07715 419 600**  
 www.theoldpostoffice-wiltshire.co.uk

**Oil Boiler**  
 Servicing, Commissioning & Repairs

CALL  
**GRAHAM C BROWN & SON**  
 01980 622737  
 Est. 1982

FULLY QUALIFIED  
 FULLY INSURED  
 EXPERIENCED TECHNICIAN



Registered Business

**Science Tuition**  
 Qualified Science Teacher  
 and Examiner  
 Science GCSE and  
 Chemistry at A level and IB

*Helping you get the grades you need.*

For more details contact Ellen Oades  
 on 01980 671760 or 07881 206507

# Tina's Hairdressers

High Street, Netheravon  
Unisex Salon  
Tel: 01980 670628

Tue 9-5 Wed 9-2 Thurs 1-7  
Fri 9-6 Sat 8.45-2

TIPZ & TOEZ  
nails now available  
*Appointments not always necessary*

# Phil Wakeford GARDENING & LANDSCAPING



Landscape Construction · Pruning Fruit Trees & Roses  
Garden Maintenance & Advice · Lawn Mowing  
25 Years Experience · Flower Meadows

**01980 670718 07194412396**

# Bits & Pieces (Durrington Ltd)

*BUILDING, GARDENING & DIY*

*PETS, PANELS, AGGREGATE*

37 - 39 Bulford Road, Durrington  
Wiltshire SP4 8DL  
Tel: 01980 655552  
Fax: 01980 652351

Proprietors: P & M Conn

# GDB TECHNICAL SERVICES LIMITED Computer/IT support

Small business and Home users  
Networking issues/installations  
PC Problems  
Tuition  
General IT advice/help  
Upgrades/Data Recovery  
Service Support Options

Call 01980 623052 or visit  
[www.gdbts.com](http://www.gdbts.com) to see if we can help.

# M NASH & P WILKINS

*ALL LANDSCAPING WORK UNDERTAKEN  
FENCING\*PATIOS\*PATHS\*PONDS\*  
BRICKWORK  
HEDGE CUTTING\*GARDEN CLEARANCE  
GRASS CUTTING*

Tel: MIKE 01380 840767  
Mobile: 07977 950654  
Tel: PAUL 01380 840763  
Mobile: 07970 557002



*All aspects of tree care and hedge maintenance  
professionally undertaken*

ESTABLISHED IN 2000

**Free Quotations and Fully Insured**

**01980 670032 07712 006706**

# Salisbury Garden Machinery



For all your garden machinery needs.  
Sales-Service-Repair-Hire

22 Newton Rd, Churchfields, Salisbury. SP27QA.  
[www.salisburygardenmachinery.co.uk](http://www.salisburygardenmachinery.co.uk) 01722 322414

# AGRICENTRE

*Now stocking Frontline for cats and  
dogs at an unrivalled price  
Excellent products at an excellent  
price from well-known horse  
wormers  
Electrical fencing  
Complete range of Briswim pool  
chemicals*

FREE HOME DELIVERY!

Contact: Justin Young, A.M.T.R.A.,  
SQP (Branch Manger)  
07850 184111 / 01722 320316



### WILTON CARPETS

**JonCard**

**Your local contact for:**

**Great Carpets  
Great Choice  
Great Prices**

**Full Measuring, Estimating  
& Guaranteed Fitting**

**Email: joncard@wiltoncarpets.com  
01722 742733**

### PEST CONTROL SERVICE

*RABBITS, RATS, MOLES  
WASPS, SQUIRRELS  
BIRD PROOFING*

**CALL NIGEL**

**01980 670804  
07854 828904**

### YOGA CLASSES ENFORD VILLAGE HALL EVERY MONDAY

**Beginners/Gentle yoga 6.00—7.15pm  
Intermediate Yoga 7.30—9.00pm**

**For details of other yoga classes visit  
yoga@emmapetitt.co.uk  
Emma on 01980 670510**

### SEAN DEVINE PAINTER & DECORATOR



**Free estimates. Fully insured.  
For local professional service call:  
01980 630864 or 07870 454884**

### ENGLISH COUNTRY GARDENS

### LOGS

All sound dry wood  
Beech, Oak, Ash, Sycamore, Elm, Apple, Yew

**Loads (Small) £60 (Large) £105  
Extra Large Load £140  
5 bags £25**

**Kindling wood 5 bags for £22.50  
Stacking available -ask for price  
Call Nick 07835299247**



C10079

### M.A.B HEATING

**Boiler and Heating Services**

**Oil, Gas and LPG**

*Very competitive charges for boiler servicing and breakdowns  
Boiler Replacements  
Professional and friendly service  
7 Days a week inc Bank Holidays*

**Please call Mark on:**

**Tel: 01747 828689 or Mobile: 07974 249287**



307264

### THE MOTOR GARAGE LTD

**Max Rowley  
Manager**

**Telephone: 01980 670348  
Mobile: 07970 785284**

**www.themotorgarage.co.uk  
max@themotorgarage.co.uk**

**The Motor Garage  
Netheravon, Salisbury, Wiltshire, SP4 9RH**

### Soft Furnishings

by Helen Judd

**Loose covers  
Cushions  
Curtains  
Roman blinds  
Fabric sales**

**For further information call:**

**Tel: 01980 625 442  
Mob: 07971 028 972**

## VILLAGE COMMITTEES

### PARISH COUNCIL

<b>Chairman</b>	<b>Norman Beardsley (Rights of Way)</b>	<b>670860</b>
<b>Vice Chairman</b>	<b>Nigel Murray</b>	<b>671684</b>
<b>Parish Clerk</b>	<b>Elizabeth Harrison</b>	<b>670034</b>
<b>Councillors</b>	Michael Fay	<b>670553</b>
	Jane Young (Parish Hall)	<b>670532</b>
	Anthony D'Arcy Irvine (Rep Tidwort & Pewsey Area Boards/Village Hall)	<b>670501</b>
	David Harbottle (Roads and Highways)	<b>670932</b>
	Richard Petitt (Planning Committee/ Parochial Church Council)	<b>670510</b>
	Gareth Holden (PR/Press Officer)	<b>671195</b>
	Bruce Waight	<b>670113</b>
	Pat Holdway	<b>671792</b>
	Richard Roberts (Police/NHW)	<b>671005</b>

### NETHERAVON SCHOOL

<b>Chairman of Governors</b>	Fanny Middleton
<b>Head Teacher</b>	Hayley Humphris

### PAROCHIAL CHURCH COUNCIL

#### NEWSLETTER

<b>Chairman</b>	Tanya Becker
<b>Vice Chairman</b>	Linda Mundy
<b>Secretary</b>	Linda Mundy
<b>Treasurer</b>	Ros Perry
<b>Advertising</b>	Gay Monk
	Jacqui Elkins
	Jane Young
	Ann Houghton
	Clare Burge
	Kriss Mitchell

<b>Church Wardens</b>	John Poole Warren
	Henry Middleton
<b>Treasurer</b>	Gill Gould
<b>Secretary</b>	Amanda Murray
<b>Council Members:</b>	John Manser
	Jonathan Walsh
	Judy D'Arcy-Irvine
	Bruce Carter
	Frank Horsford
	Mary Burdick
	Gai Rickett
	Sue de Candole

#### VILLAGE HALL

<b>Chairman</b>	Judy D'Arcy-Irvine
<b>Vice Chairman</b>	Steve Becker
<b>Treasurer</b>	Hannah Tucker
<b>Secretary</b>	Kriss Mitchell
<b>PC Rep</b>	A D'Arcy Irvine
<b>Youth Club</b>	Jane Young
<b>Camera Club Rep</b>	Jane Young
<b>Football Club Rep</b>	Ollie Stagg
<b>PCC Rep</b>	Judy D'Arcy-Irvine
<b>Newsletter Rep</b>	Jacqui Elkins
<b>Booking Officer</b>	Judy D'Arcy-Irvine (670501)
<b>Property Officer</b>	David Spencer
<b>Grounds Officer</b>	Hamish Scott Dalgleish

#### PARISH HALL

<b>Chairman</b>	Richard Petitt
<b>Treasurer</b>	Bob Taylor
<b>Secretary</b>	Gareth Holden

#### ALL SAINTS CHURCH Team Rector

Reverend Mark Zammit

01980653953  
07733 077957  
[zammitparish@yahoo.co.uk](mailto:zammitparish@yahoo.co.uk)

**FOR YOUR DIARY December 2014**

<b>1st</b>	Mon		
<b>2nd</b>	Tue	Quiz, The Swan	
<b>3rd</b>	Wed	Short Mat Bowls, 7.30pm	
<b>4th</b>	Thu	Recycling / Circuits, Parish Hall, 7.00pm	
<b>5th</b>	Fri	Youth Club, 6.00pm, Village Hall	
<b>6th</b>	<b>Sat</b>	Enford Cycling, 9.30am, The Swan / Youth Football Session, 10.00pm, Enford Playing Fields/ Coffee Morning 10.30am, River Cottage, Fittleton	
<b>7th</b>	<b>Sun</b>	<b>Holy Communion , 9.00am</b> / Youth Club Bingo, 2.00 - 5.00pm, Phoenix Hall, Netheravon/Christmas Bazaar, 2.00 - 5.00pm, Figheldean Village Hall	
<b>8th</b>	Mon		
<b>9th</b>	Tue	Quiz, The Swan	
<b>10th</b>	Wed	Short Mat Bowls, 7.30pm	
<b>11th</b>	Thu	Household & Garden Waste/ Gardening Club, Village Hall, 6.45 for 7.00pm/ Circuits, Parish Hall, 7.00pm	
<b>12th</b>	Fri	Youth Club Carol Service, 7.00pm, Village Hall	
<b>13th</b>	<b>Sat</b>	Youth Football Session, 10.00pm, Enford Playing Fields /Children's Christmas Party, Village Hall, 2.00pm - 4.30pm	
<b>14th</b>	<b>Sun</b>	<b>Team Service, Netheravon, 10.30 am / Messy Church, 4.00pm</b>	
<b>15th</b>	Mon		
<b>16th</b>	Tue	Quiz, The Swan	
<b>17th</b>	Wed	Short Mat Bowls, 7.30pm	
<b>18th</b>	Thu	<b>Crib Service, 4.00 pm</b> / Recycling / Circuits, Parish Hall , 7.00pm	
<b>19th</b>	Fri	Enford Youth Club Christmas Party Village Hall,	
<b>20th</b>	<b>Sat</b>		
<b>21st</b>	<b>Sun</b>	<b>Carol Service, 10.30am</b>	
<b>22nd</b>	Mon		
<b>23rd</b>	Tue	Quiz, The Swan	
<b>24th</b>	Wed	<b>CHRISTMAS EVE Midnight Mass, 11.30pm</b>	
<b>25th</b>	Thu	<b>CHRISTMAS DAY Family Communion, 10.30am</b>	
<b>26th</b>	Fri	<b>BOXING DAY</b>	
<b>27th</b>	<b>Sat</b>		
<b>28th</b>	<b>Sun</b>	<b>Evensong, 6.00pm</b>	
<b>29th</b>	Mon		
<b>30th</b>	Tue	<b>Advent Team Service, 6.00pm, Fittleton</b>	
<b>31st</b>	Wed	<b>NEW YEAR'S EVE</b>	

