

Enford Newsletter

July/August 2015

What is Happening In and Around Enford

Happy Summer Holidays
To All The Children In
The Parish

WELCOME

We would like to wish a very warm welcome
to all who have recently moved into the Parish of Enford.
We hope that you will find many new friends and neighbours

www.enfordnewsletter.org

USEFUL NUMBERS

EMERGENCY SERVICES

DOCTORS

630221	UPAVON	The Surgery, Fairfield
652378	DURRINGTON	The Surgery
652221	DURRINGTON	Cross Plains Surgery

HOSPITAL

01722 336262	SALISBURY DISTRICT HOSPITAL
--------------	-----------------------------

POLICE

101	POLICE
-----	--------



OTHERS

0800 111 999	GAS
0800 80 70 60	ENVIRONMENTAL AGENCY
0345 988 1188	FLOOD LINE
0800 072 72 82	ELECTRICITY
01980 674700	PLAINWATCH

DURRINGTON LINK

01980 594857	LINK (Durrington & District)
--------------	------------------------------

SCHOOLS

01980 670339	ALL SAINTS C of E PRIMARY, Netheravon
01980 630360	RUSHALL C of E PRIMARY, Rushall
01980 670268	ST MICHAEL'S C of E PRIMARY Figheldean
01980 652467	AVON VALLEY COLLEGE SECONDARY, Durrington
01672 565000	PEWSEY VALE SECONDARY SCHOOL, Pewsey

WHAT CAN YOU DO TO REDUCE CRIME ON SALISBURY PLAIN?

If any crime is taking place call 999 and do not under any circumstances challenge the offenders.

Report suspicious activity to PLAINWATCH (01980 674700) or PLAINWATCH@landmarc.mod.uk. The more information received the better, e.g. time, place, vehicle registration, description of individuals and vehicles.

Health and Safety reminder for all Military Training Areas and Ranges:

Do not touch or tamper with Military debris.
 Wash your hands before you eat.
 Clean your footwear before you enter your car or home.

ENFORD NEWSLETTER CONTENTS

New Notice Board/Hedges and Verges 4

The Hub Café 5
WWI Commemoration Event

Celtic Music 6

Fishing/Local Lads at Gallipoli 7

Film Club 8

Village Hall & Recreation Ground 9

Cricket Club/Claire Perry/SPTA News 10

Children’s Football/Thank You/Darts 11

Thank You/Enford Cycling 12

Youth Club News 13

Thank You/Congratulations/
Newsletter/ 14

Sponsored Knit/Dog Walking 17

A Team Vicar’s Musings 18

All Saints/Messy Church 19

Netheravon Day Centre/NGS 20

Sponsored Dog Walk/The Hub 21

Gardening Club 22

Scots Guards Band/ For Sale 23

Advertising 24

Village Committees 31

July Diary 32

**The next Newsletter
deadline is**

**FRIDAY
21st AUGUST 2015**

All items for inclusion, whether they are handwritten, typed or via e-mail, **MUST be submitted by the date of the meeting.** These articles may be handed in to any Newsletter Committee member.

**Please send e-mails to
tanya@stbecker.plus.com**

Enford Newsletter Committee reserves the right to reject or omit from publication any material that is considered by majority of Committee Members to be detrimental to any person or which is not in the best interest of the community as a whole. All letters and articles must be signed, but the Committee will withhold the name of the writer if this is requested at the time of sending it in.

ENFORD DEFIBRILLATOR

- 23 **The defibrillator is in a yellow box on the wall of Hill House, 9 Longstreet, SN9 6DD**
Grid Ref SU142515.
- 24 **It is located in the centre of Enford 25 m north of The Swan next to the parish notice boards.**
- 31 **If you think you need to use the defibrillator call 999. The Emergency Service will give you the code to get into the cabinet.**

**YOU CAN READ MORE ABOUT IT AT,
WWW.ENFORDNEWSLETTER.ORG
WHERE YOU WILL ALSO FIND A LINK
TO A SHORT VIDEO SHOWING YOU
HOW TO USE IT.**



A NEW NOTICEBOARD FOR THE CENTRE OF ENFORD PARISH



Councillor, Michael Fay, and Parish Clerk, Elizabeth Harrison, unveiling the new notice board in Enford.

The new board has more space to display Parish Council minutes etc and village notices/posters for Parish events.

Enford Parish Council would like to thank the Community Fund for its contribution towards purchasing the new notice board.

To display a poster for local events contact Elizabeth on 670034

HEDGES AND VERGES

Increasingly, as summer progresses, there is a problem with hedges and foliage overhanging pavements and roads running through the village.

Please could residents cut back their hedges so that safety is not compromised with drivers and pedestrians affected by views being obstructed.

Thank you very much.

Enford Parish Council

"The" Hub

Enford's *NEW* Community Cafe

At The Swan

Every Thursday

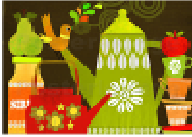
9.30—11.30am

Tea, Coffee & Home-made Cakes

A place to meet your friends

and make new friends

All Welcome



YOUR COUNTRY NEEDS YOU!



World War 1 Commemoration Event Saturday 19th September

On Saturday 19th September we will commemorate the 100th Anniversary of the Great War at Enford Village Hall. There will be activities for the children in the afternoon (free) and for adults in the evening.

The evening will be a themed event (fancy dress optional) which will include music, food and a special presentation about the local people who fought in the war.

The cost (for the evening) will be £10.00 per head and will cover a themed three course meal and a drink. There are only 100 tickets available so don't miss out!

To purchase your ticket and guarantee your place in the trenches contact:

Bob Taylor on 07909 870122 or
Ollie Stagg on 07831 392035

All cheques payable to Enford Village Hall.

Enford Music Club Presents an Evening of Live Music at

Enford Village Hall, SN9 6DD

With

Beck Siàn & Jonathan Kershaw (Acoustic Goth)

Saturday 10th October 2015



*"Romantic, haunting vocals
together with Celtic fused,
emotive guitar..."*

Doors Open: 7.00 pm
Performance starts: 7.30 pm
Finish (approx): 10.15 pm
Bar Closes: 11 pm

A 2-course supper will be served during the interval, *if ordered in advance* (last orders for supper Wed 7 Oct).

Tickets:

£8 (admission only) or..
£17 (includes a lamb or chicken
curry supper from the Goa
Balti)

Bookings please to Steve on
01980 670345 or by email to:
steve@becker.globalnet.co.uk

"We strive to create a beautiful and powerful atmosphere to support our Celtic-Gothic music. Tales of castles in the mists, Goddesses, ghosts and alchemists abound.

We like to take the audience on a journey with us - crossing wild seas, running through dark woods, roaming castle turrets, encountering ghostly maidens in the moonlight - all through our music. Ours is a highly professional show with sequenced lighting, props and costumes, all of which help us to create a very special and meaningful atmosphere for each song"

All proceeds in aid of Enford Village Hall

Chisenbury Fishing Syndicate

Fly Fishing on 2.5 miles of the Upper Salisbury Avon
for Brown Trout and Grayling
Membership Available for 2015
www.chisenburyfishing.com



Phoenix Hall, Netheravon
Contact Selaine
07801 427358

The last Fitsteps class will be on
Wednesday 22nd July
at 6.30pm

There will be a break for the summer
beginning again early September.

The Journey to Gallipoli In The Footsteps Of ' Our Lads'

An illustrated talk telling the stories of men from Netheravon,
Enford and Fittleton who fought at Gallipoli 100 years ago.

Guest appearance by local author Richard Broadhead

'Strange Old Things', the mobile museum,
will be showing WW1 artefacts

Phoenix Hall Netheravon

Saturday, July 11th

6.30 for 7.00 pm

Refreshments available including wine and ANZAC biscuits!

FREE ENTRY



ENFORD FILM CLUB

TUESDAY 29TH SEPTEMBER
ENFORD VILLAGE HALL

THE SECOND BEST EXOTIC MARIGOLD HOTEL

As the Best Exotic Marigold Hotel has only a single remaining vacancy - posing a rooming predicament for two fresh arrivals - Sonny pursues his expansionist dream of opening a second hotel.

Doors open at 7.00 pm

Drinks available from the Bar

Tickets £5.00 each booked in advance and £6.00 on the night

Lifts can be arranged for anyone who would like to come

If you wish to join the Mailing List, would like to book tickets, or need a lift, please contact 01980 670501 or email enfordvillagehall@btinternet.com

FILM CLUB

A reminder that there will be no Film Night in July or August, as it is the holiday season and gardens take priority!

The Autumn Season will start with "The Second Best Exotic Marigold Hotel" on Tuesday, 29th September.

For further information on the Film Club please email enfordvillagehall@btinternet.com or call 01980 670345 or 670501

VILLAGE HALL AND RECREATION GROUND



Contact Details:

Booking Officer 01980 670501
 enfordvillagehall@btinternet.com
 www.enfordnewsletter.org

Chairman 01980 670501
Deputy Chairman 01980670345
Grounds Officer 01980 670210
Maintenance Officer 01980 670526

Private Parties

Planning a children's party? Celebrating a special birthday or anniversary? The hall is the perfect venue for weddings and parties!

Day	Activity	Time	Contact
Mon	Yoga Beginners' Class Yoga Intermediate	6.00pm – 7.15 pm 7.30pm—9.00pm	Emma Pettitt 01980 670510 yoga@emmapettitt.co.uk
Tues	Enford Film Club	4th Tuesday in the month Doors open 7.00 pm	Steve Becker 01980 670345
Wed	Body Conditioning & Bootcamp	6.15 pm – 7.15 pm	Helen Gould-Cooper 01980 670324 h.gouldcooper@virgin.net
Wed	Short Mat Bowls	7.30 pm – 10.00pm October to April	David Spencer 01980 670526 spencersgb@yahoo.co.uk
Thu	Pilates	8.45 am – 9.45am	Nicci Caswell 01980 625245 nicccaswell@btopenworld.com
Thu	Camera Club	8.00 pm – 9.00 pm 1st Thursday in the month	Martin Webb 01980 670537 webb14@btinternet.com
Thu	Gardening Club	7.00pm – 9.00 pm 2nd Thursday in the month	Fanny Middleton 01980 671645 fannysurtees@btinternet.com
Fri	Youth Club	6.00 pm – 8.00 p.m.	Sue Greenhow suegreenhow44@sky.com
Sat	Children's Football Coaching Sessions	10.00am -11.00 am Recreation Ground	Ollie Stagg 01980 670634 olliestagg@wessexwater.co.uk
Sun	Enford Football Club	Recreation Ground	Kevin Bennetts 07808816725 bennetts99@live.co.uk

YOUTH CLUB We would love to hear from anyone who is interested and who can commit to a Friday evening once a month, weekly or fortnightly.

ENFORD FOOTBALL CLUB is running weekly Saturday morning Junior Football Sessions. Contact Ollie Stagg 01980670634 for further information and to join in!



Avon Valley Cricket Club

AVCC's Club Day takes place on Sunday 19 July from 1.30 - 7.30pm.

22 members and guests will play out a 35 over game to celebrate the cricket, the club and the community.

Come and play, or come for a burger, a pint or a lemonade.

Check out our new pavilion

See whether Nigel has cut the grass properly

See how fancy Nikki's cakes are

Speculate whether Simon B will be able to smash the ball into the Judge's garden

Watch Dudley running a 3

Count the number of dropped catches


All this and more.....


We look forward to seeing you. You will be very welcome.

Please contact Simon Campbell on simon@enfordhouse.co.uk or 07761 780578 to find out more or visit <http://www.avonvalleycc.co.uk/>

CLAIRE PERRY

*Working hard for the
Devizes Constituency*

 Claire Perry MP
House of Commons
London
SW1A 0AA

 01380 729358

 www.claireperry.org.uk

 claire.perry.mp@parliament.uk



*I hold regular surgeries around the Constituency
- please call or email to book an appointment.*

SPTA NEWS

For Salisbury Plain Training Area News,
giving times of live firing and current and
upcoming exercises go to

[www.gov.uk/governmentpublications
salisbury-plain-imber-range-perimeter-path](http://www.gov.uk/governmentpublications/salisbury-plain-imber-range-perimeter-path)

or

follow the link at

www.enfordnewsletter.org



Enford Football Club Children's Coaching Sessions



The next coaching sessions will take place on the field
at Enford Village Hall on
July 4th, July 11th, July 18th

The sessions run from 1000hrs until 1100hrs
they cost just £2:50 per child per session.

Any child who wants to take part should be aged between 5 and 11 years old and they should
bring their own shin pads, suitable footwear and a drink.

Ollie Stagg

THANK YOU

A big thank you to "The Hub" community café at The Swan for their generous
contribution of £100 for the Enford & Avon Valley Youth Club.

A special thanks to Diane, Pete & Emma.

Also, a thank you to Jane Young and all others involved for raising £120 for the
Enford & Avon Valley Youth Club from a recent jumble sale.

The Hub" also donated £100 towards The Link and as Chairman of the Youth Club
and Vice Chairman of The Link , it was my great pleasure to attend The Hub recently
to accept these generous donations on behalf of both groups.

Andy Lucker

AN EVENING OF DARTS

EVERY WEDNESDAY 2030HRS AT
THE SWAN

HOPE TO SEE YOU THERE!!!

G. B. Chamberlain
Flooring Specialist
Specialising in Ceramic
Floors and Walls

Tel: 07971 182752
24 hour answer service





THANK YOU TO ALL THOSE WHO HELPED WITH TEAS IN AID OF THE CHURCH AT THE PRIORY

A huge thank you to all the helpers and cake bakers who raised a record £535 for the Church with the delicious teas served at the Priory on Sunday 14th June.

Many thanks also to John and Tessa Manser for the opportunity to look around their beautiful gardens on such a lovely afternoon.

ENFORD CYCLING



Enford Cycling Group aims to give riders of all experience the opportunity to explore some of our beautiful local countryside.

Weather permitting, we will run these every 4 weeks on the first Saturday of the month.

The next meeting will be on Saturday 4th July at 9.30am. The route will suit most abilities and will be from the Swan to a coffee stop and back - in the region of 15 miles.

If you are interested, please contact Nigel Murray on either 01980 671684 or by email at nigel.murray@spitfireuk.net – or indeed just turn up on the day.

DO YOU NEED A LIFT TO THE VILLAGE HALL?

If you would like to come to any of the clubs or events in the Village Hall but would like a lift or are worried about coming on your own, please call

01980 670501

01980 670345

email enfordvillagehall@btinternet.com

We will try and arrange for someone to pick you up and take you home.

Youth Club News

AGES 5 TO 16

Come and Join Us

ENFORD
VILLAGE HALL

Every Friday Night 6 – 8pm

No need to book - just turn up
£1 per week

(membership required after initial visit)

Youth Club is about having fun at the end of the week

You decide what you want to do!

Come and join us, all welcome!

For more information call: Bruce Carter - 07872 335579



Enford and Avon Valley Youth Club

FORTHCOMING EVENT: OXENWOOD HERE WE COME!

The Oxenwood Outdoor Centre has been booked again for 3rd-4th of July 2015 and the club would like to hear from children who are members and who would like to attend. This event is sure to be popular and there are limited places so early booking is recommended!

The actual activities have yet to be confirmed however last year there was Air Rifle Shooting, Archery, Canoeing and Wall Climbing as well as lots of yummy food and fun!

THANK YOU FROM CHRISTIAN AID

£724.27 was collected during the house to house collection in Enford Parish for Christian Aid.

This will go towards helping poor families around the world to escape from grinding poverty and to help them look forward to a brighter future.

Thank you to everyone who gave so generously and also a huge thank you to all the collectors who gave their time to collect for such a worthy cause.

Thank you.

CONGRATULATIONS

to
James and Harriet
on their recent marriage

We wish them both much happiness
for the future



NEWSLETTER NOTICES

Telephone Directory

With your Newsletter this month comes the new Enford Telephone Directory. The next one will not be produced until, probably, 2018.

Extra Newsletters

If you have more than one Newsletter delivered to your house could you please let me know? We would like to make sure that we are not printing any more copies than are needed. Each copy costs £50p to produce which over a year is £ 5.00.

Newsletter Annual General Meeting

The Newsletter AGM will be held in the village Hall on Tuesday 25th August at 7.30pm. All members of the public are welcome. The AGM will be followed by our usual meeting at 8.00pm

FROM THE FETE COMMITTEE

As there is no Newsletter in August and the fete will take place after the deadline for July, this is just a short note in advance to say a BIG THANK YOU to everyone that helped with the preparations and running of the event on the day! A full report will be included in the September issue.

NO SMOKE WITHOUT FIRE

Saturday 20th June

Fellow neighbours, please, please could you refrain from lighting your bonfires until after 7.00pm.

I have nothing against bonfires, I am of the old school. I have lovely memories of my childhood spent having a good old burn up with my Dad at the end of the garden but it was always politely after 7.00pm, 'when washing is in off the line and windows closed for the night,' my Dad always said.

Now I am all grown up I have my own washing on the line and my windows and doors are open to air the house, as the warmer weather is here.

You may think that you are far enough away but the wind carries the smoke and fumes. My house is now full of it as I write this.

So please, by all mans, continue to light your bonfires but take time to spare us a thought and light up later.

Thanks you

Claire Grace

GLASS CAKE STANDS MYSTERY

We are trying to locate a number of glass cake stands which were in a box marked "East Chisenbury Teas" kept in the church. Maybe someone borrowed them for a party or a wedding in the village??

If anyone can shed a light on their whereabouts it would be very much appreciated.

Please contact Lyn Riche Tel 670489

Get Active Holiday Sports Programme 2015

Delivered in 46 venues across Wiltshire

The Get Active Holiday Sports brochure has been put together by Wiltshire Council's Sports Development team to help promote opportunities for young people across 46 Wiltshire venues this Summer. The brochure features our expanded holiday programme for this year and includes information on the following projects:

- Star:Track Athletics Camps
 - Slamdunkz Basketball Camps
 - Sloggerz Cricket Camps
 - LTA Tennis Camps
 - SEN/Inclusion Camps (Disability Sports Activities)
 - Fun in the Sun
 - Football Camps
 - Free Swimming
- Camp Activate

Activities will take place at a range of venues including Wiltshire Council and Places for People operated leisure facilities, schools, recreational spaces, parks and local sports clubs.

For programme details on all the activities above or to download the 2015 Get Active Holiday Sport brochure visit

<http://www.wiltshire.gov.uk/leisureandrecreation/sportphysicalactivity/sportsdevholidayactivities.htm>

Alternatively, for general enquires email sportsdevelopment@wiltshire.gov.uk

Sponsored Knit / Crochet 2015

In aid of Enford Church Roof Repairs

Funds are urgently required to repair our leaking Church Roof

Please will you help?

This Fund Raising project was launched at the Hub on Thursday 7th May. It is running well with many willing ladies taking part 26 so far. Everyone is welcome. The advantage of this particular fund raising idea is twofold. We create much needed funds for All Saints Church Enford and at the same time we are helping those who are in need of tender loving care.

We are making 4.5 inch squares in order to create 'Knee Blankets' which will be given to the residents of The Camelot Care Home, Amesbury and the residents of The Salisbury Hospice, Odstock Road, Salisbury.

How are we progressing?

Thank you to all those who are producing squares, many have been handed in and the knee blankets are now beginning to take shape. If you have some squares please bring them to the Hub on Thursday 16th July.

If you have any queries please contact any of the following :

Lowenna Harbottle - 01980670932

Jacki Brightman - 01980671598

Amanda Murray - 01980671684

Thank you

DOG WALKING



Not enough time in the day?

Would you like someone responsible and reliable to take your dog /s for a walk in the evenings or at weekends?

Please phone 671072 for rates and availability.

A Team Vicar's musings

By the time you read this it will be known that we didn't appoint a Team Rector in June and that we are advertising again in September with the interview date in November. Yes we are disappointed but realise that we have to have the right person and that it will happen – not necessarily as quick as we would like!

It reminds me of the words from Ecclesiastes which tells us that there is a time for everything:

A right time for birth and another for death,
 A right time to plant and another to reap,
 A right time to kill and another to heal,
 A right time to destroy and another to construct,
 A right time to cry and another to laugh,
 A right time to lament and another to cheer,
 A right time to make love and another to abstain,
 A right time to embrace and another to part,
 A right time to search and another to count your losses,
 A right time to rip out and another to mend,
 A right time to shut up and another to speak up,
 A right time to love and another to hate,
 A right time to wage war and another to make peace.

(Scripture taken from The Message copyright©2002. Used by permission of NavPress Publishing Group)

We know this in our own lives and so it is in the life of the churches in Avon River Team; we learn all the time to wait on God and that God's time is not necessarily our time. Please continue to hold us in your prayers, especially the churchwardens who have taken on extra tasks.

Last month I posed some questions for consideration, one of them was "Where do I see God's love in my life and the world around me?" One sign is how we in the church leadership have been prayed for and supported over the last few months. You may think that what you have done is little but it shows a greater love than we can ever imagine. So I thank you for this and for reminding me of God's love.

Rachel Bussey, Team Vicar



Part Time Administrator Needed

The local churches and parishes of the Avon River Team seek a part-time administrator term times only.

With a professional approach and the ability to work on your own, you will have good organizational, communication, IT and interpersonal skills. You will be expected to take minutes of meetings, some of them will be in the evening about four times a year. The post-holder will be based in our office in Old School Hall, Durrington for 2.5 hours per week but will be expected to be flexible in the hours. Salary is £10 per hour.

For further information and an application form, contact Rachel Bussey on rachel@avonriverteam.org.uk Closing date for applications to be returned 14th July, interviews will take place on 29th July

As a faith-based organization, we would expect the post-holder to respect our beliefs.

ALL SAINTS CHURCH, ENFORD

There is much more information and help to be found on the website at www.avonriverteam.org.uk

CHURCH SERVICES

July

5th	Holy Communion, 9.00am
12th	Team Service, Netheravon 10.30am
12th	Family Service, 10.30am
19th	Messy Church, Enford, 4.00pm
21st	Evensong—Service by Bishop of Ramsbury
26th	Evensong, 6.00pm

August

2nd	Holy Communion, 9.00am
19th	Team Service, Bulford, 10.30am
16th	Family Service, 10.30am
23rd	Evensong, 6.00pm

CHURCH CLEANING ROTA

July

3rd	Lyn Riche & Fanny Middleton
10th	Amanda Murray & Mary Burdick/Patti Hall-Smith
17th	Sue Poole-Warren & Hilary Horsford
24th	Tanya Becker & Linda Mundy
31st	Paula de Chalus & Amanda Marx

August

7th	Gai Rickett & Lowenna Harbottle
14th	Lyn Riche & Fanny Middleton
21st	Amanda Murray & Mary Burdick/Patti
28th	Sue Poole-Warren & Hilary Horsford



NETHERAVON SCHOOL SUNDAY 12th July

Lots of crafts. Children must bring an adult!
Why not come and join us and discover more?
01980 670326

gale@avonriverteam.org.uk

**So that we can make sure we have enough craft and food,
please do let us know if you are coming**

NETHERAVON DAY CENTRE

The Netheravon Day Centre (incorporating Figcheldean, Fittleton, Haxton and Enford) meets each Wednesday from 10.00 am - 3 pm at the Phoenix Hall in Netheravon.

There are currently 16 members and there is possibly room for two or three more, provided transport is not needed.

On arrival there is a cup of tea or coffee and biscuits. There is time for a chat, a game of cards or dominoes until lunch, which is a hot cooked lunch each week, except in the summer when we have one cold meal per month. After lunch there is music, bingo and a raffle each week. The cost for the day is £5.00 per head.

In addition in the last year the group have gone to Salisbury Playhouse for a Vintage Tea; had a Tea Dance in October to which members came and invited friends and family, been to a band concert at Tidworth, to the Pantomime and had a Christmas Party with carols and dancing after lunch.

**If you are interested in joining the group
please contact Caroline Aubry-Fletcher**

**01980 670364 / 07855 441874
cafyewhouse@btinternet.com**

VOLUNTEERS NEEDED

**We are always looking for volunteers especially with collecting
and returning people to their homes.**

THE NATIONAL GARDENS SCHEME

There are a number of beautiful and interesting gardens which open for charity here in Wiltshire. There are all types: formal and informal, large and small, privately owned and rarely open to the public or owned by The National Trust and other bodies. All have been selected for their high horticultural standards. The gardens are the work of generous garden enthusiasts, offering many planting ideas as well as tempting plants for sale and delicious home made teas.

Details: www.ngs.org.uk

SSAFA SPONSORED DOG WALK

The weather was a bit questionable on the Day but decided to go ahead.

Very unfortunately, our gorgeous girl, Toffee, couldn't join me, due to a bad knee injury, which many of you know about. Fortunately, I had a very good stand-in, by a very wonderful, and special Goldie called Rustle (my Godson, bear with me), who many of you may know.

We were very generously joined at the Village Hall by our very, very good friends, Sarah and Hettie.

Well, we did the chosen route and the money pledged, came to £127. Not bad for a very pleasant way to fill a couple of hours.

Many, many thanks to Rustle, Sarah, Hettie, and of course, our Toffee. Also many thanks to my wonderful other half, who had a coffee Ready for Sarah and I.

I am also very grateful to the brilliant money-pledgers.

I'll soon be knocking on your doors.



Ready for the sponsored walk

THE SWAN - THE HUB

Congratulations to Pete and his team (his father in law) on the redesigning and construction of the new beer garden at The Swan. What they have achieved in a short space of time is truly remarkable and to those who haven't yet payed a visit - it is well worth it!

Also the ladies who run The Hub are to be congratulated on their sterling efforts (and cakes). In the short time The Hub has been running they have already made donations to the Enford Youth Club and the Link Scheme. The Hub is run by two ladies and is nothing to do with the Swan landlord. All he does, is to allow them to use his premises. He also samples the cakes, especially the sausage rolls!

I hope to see it flourishing more than ever.

Come along for a chat and a slice of cake and a cuppa.

Michael Fay



ENFORD GARDENING CLUB

the Gardening Club is taking a break over the summer and our next meeting will be Thursday 10th September when Ray Broughton will be speaking on Pond and Water Plants.

PROGRAMME - AUTUMN 2015

Thursday September 10th

Ponds & Water Plants

Ray Broughton

Thursday October 8th

Longstreet House garden, with Camera Club photographs from visit in June 2014.

Jeni Scott-Dalglish

Thursday November 12th

Christmas decorations demonstration,
wreath, table and mantelpiece decorations.

Gill Thompson

No meeting in December

All meetings take place in Enford Village Hall

7.00 for 7.15

Tea & coffee available

Plants for sale

Entrance fee: £4.00

GARDENING CLUB MEETING REPORT

They say the sun shines on the righteous and I don't know if this applied to the Garden Club or to Tessa and John Manser! They had kindly invited the Garden Club

John was on hand to explain the planting and to name plants and the questions came thick and fast. Irises, roses and clematis were perfection and in the white garden, foxgloves and alliums made a great impact and I shall definitely be adding some white alliums to my garden.

For those who had not been to the garden before, it was a great treat to see behind the walls and the evening ended with a glass of wine and lots of chat. A happy end to the Garden Club summer programme.

Gai Rickett





soldierscharity.org

**The Band of the Scots Guards
in concert featuring singer Davina Hastings**

**Wednesday 8th July 2015
7.30pm City Hall, Salisbury**

01722 434434

www.cityhallsalisbury.co.uk

ABF and The Soldiers' Charity is a registered charity in England and Wales (1070142) and registered as a company limited by guarantee in England and Wales (1130142). Registered Office: 100, 101, 102, 103, 104, 105, 106, 107, 108, 109, 110, 111, 112, 113, 114, 115, 116, 117, 118, 119, 120, 121, 122, 123, 124, 125, 126, 127, 128, 129, 130, 131, 132, 133, 134, 135, 136, 137, 138, 139, 140, 141, 142, 143, 144, 145, 146, 147, 148, 149, 150, 151, 152, 153, 154, 155, 156, 157, 158, 159, 160, 161, 162, 163, 164, 165, 166, 167, 168, 169, 170, 171, 172, 173, 174, 175, 176, 177, 178, 179, 180, 181, 182, 183, 184, 185, 186, 187, 188, 189, 190, 191, 192, 193, 194, 195, 196, 197, 198, 199, 200, 201, 202, 203, 204, 205, 206, 207, 208, 209, 210, 211, 212, 213, 214, 215, 216, 217, 218, 219, 220, 221, 222, 223, 224, 225, 226, 227, 228, 229, 230, 231, 232, 233, 234, 235, 236, 237, 238, 239, 240, 241, 242, 243, 244, 245, 246, 247, 248, 249, 250, 251, 252, 253, 254, 255, 256, 257, 258, 259, 260, 261, 262, 263, 264, 265, 266, 267, 268, 269, 270, 271, 272, 273, 274, 275, 276, 277, 278, 279, 280, 281, 282, 283, 284, 285, 286, 287, 288, 289, 290, 291, 292, 293, 294, 295, 296, 297, 298, 299, 300, 301, 302, 303, 304, 305, 306, 307, 308, 309, 310, 311, 312, 313, 314, 315, 316, 317, 318, 319, 320, 321, 322, 323, 324, 325, 326, 327, 328, 329, 330, 331, 332, 333, 334, 335, 336, 337, 338, 339, 340, 341, 342, 343, 344, 345, 346, 347, 348, 349, 350, 351, 352, 353, 354, 355, 356, 357, 358, 359, 360, 361, 362, 363, 364, 365, 366, 367, 368, 369, 370, 371, 372, 373, 374, 375, 376, 377, 378, 379, 380, 381, 382, 383, 384, 385, 386, 387, 388, 389, 390, 391, 392, 393, 394, 395, 396, 397, 398, 399, 400, 401, 402, 403, 404, 405, 406, 407, 408, 409, 410, 411, 412, 413, 414, 415, 416, 417, 418, 419, 420, 421, 422, 423, 424, 425, 426, 427, 428, 429, 430, 431, 432, 433, 434, 435, 436, 437, 438, 439, 440, 441, 442, 443, 444, 445, 446, 447, 448, 449, 450, 451, 452, 453, 454, 455, 456, 457, 458, 459, 460, 461, 462, 463, 464, 465, 466, 467, 468, 469, 470, 471, 472, 473, 474, 475, 476, 477, 478, 479, 480, 481, 482, 483, 484, 485, 486, 487, 488, 489, 490, 491, 492, 493, 494, 495, 496, 497, 498, 499, 500, 501, 502, 503, 504, 505, 506, 507, 508, 509, 510, 511, 512, 513, 514, 515, 516, 517, 518, 519, 520, 521, 522, 523, 524, 525, 526, 527, 528, 529, 530, 531, 532, 533, 534, 535, 536, 537, 538, 539, 540, 541, 542, 543, 544, 545, 546, 547, 548, 549, 550, 551, 552, 553, 554, 555, 556, 557, 558, 559, 560, 561, 562, 563, 564, 565, 566, 567, 568, 569, 570, 571, 572, 573, 574, 575, 576, 577, 578, 579, 580, 581, 582, 583, 584, 585, 586, 587, 588, 589, 590, 591, 592, 593, 594, 595, 596, 597, 598, 599, 600, 601, 602, 603, 604, 605, 606, 607, 608, 609, 610, 611, 612, 613, 614, 615, 616, 617, 618, 619, 620, 621, 622, 623, 624, 625, 626, 627, 628, 629, 630, 631, 632, 633, 634, 635, 636, 637, 638, 639, 640, 641, 642, 643, 644, 645, 646, 647, 648, 649, 650, 651, 652, 653, 654, 655, 656, 657, 658, 659, 660, 661, 662, 663, 664, 665, 666, 667, 668, 669, 670, 671, 672, 673, 674, 675, 676, 677, 678, 679, 680, 681, 682, 683, 684, 685, 686, 687, 688, 689, 690, 691, 692, 693, 694, 695, 696, 697, 698, 699, 700, 701, 702, 703, 704, 705, 706, 707, 708, 709, 710, 711, 712, 713, 714, 715, 716, 717, 718, 719, 720, 721, 722, 723, 724, 725, 726, 727, 728, 729, 730, 731, 732, 733, 734, 735, 736, 737, 738, 739, 740, 741, 742, 743, 744, 745, 746, 747, 748, 749, 750, 751, 752, 753, 754, 755, 756, 757, 758, 759, 760, 761, 762, 763, 764, 765, 766, 767, 768, 769, 770, 771, 772, 773, 774, 775, 776, 777, 778, 779, 780, 781, 782, 783, 784, 785, 786, 787, 788, 789, 790, 791, 792, 793, 794, 795, 796, 797, 798, 799, 800, 801, 802, 803, 804, 805, 806, 807, 808, 809, 810, 811, 812, 813, 814, 815, 816, 817, 818, 819, 820, 821, 822, 823, 824, 825, 826, 827, 828, 829, 830, 831, 832, 833, 834, 835, 836, 837, 838, 839, 840, 841, 842, 843, 844, 845, 846, 847, 848, 849, 850, 851, 852, 853, 854, 855, 856, 857, 858, 859, 860, 861, 862, 863, 864, 865, 866, 867, 868, 869, 870, 871, 872, 873, 874, 875, 876, 877, 878, 879, 880, 881, 882, 883, 884, 885, 886, 887, 888, 889, 890, 891, 892, 893, 894, 895, 896, 897, 898, 899, 900, 901, 902, 903, 904, 905, 906, 907, 908, 909, 910, 911, 912, 913, 914, 915, 916, 917, 918, 919, 920, 921, 922, 923, 924, 925, 926, 927, 928, 929, 930, 931, 932, 933, 934, 935, 936, 937, 938, 939, 940, 941, 942, 943, 944, 945, 946, 947, 948, 949, 950, 951, 952, 953, 954, 955, 956, 957, 958, 959, 960, 961, 962, 963, 964, 965, 966, 967, 968, 969, 970, 971, 972, 973, 974, 975, 976, 977, 978, 979, 980, 981, 982, 983, 984, 985, 986, 987, 988, 989, 990, 991, 992, 993, 994, 995, 996, 997, 998, 999, 1000.



Little Used Teak Sun Lounger

Complete with mattress

Apply 01980670932



Advertising

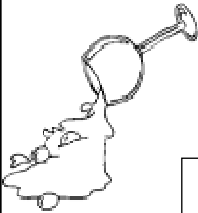
ENGLISH COUNTRY GARDENS

Garden & lawn maintenance, hedge and tree work, fences, driveways & weed control
Garden waste removed.
Qualified, fully insured and licensed, 23 years experience

WE SUPPLY

Mushroom compost, manure, Pro Grow, woodchips, gravel, stone & scalplings
Loads of logs by size: £63, £107, 145
All seasoned & dry native species.
Can stack
Bags of kindling: £4.50 or 5 bags for £20

Call or text Nick on 07835299247



OOPS HAPPENS!

Time to call **Clean Living** carpet and upholstery cleaners
Where Really Clean Really Matters!

****SPECIAL OFFER****

For 10% off quote Enford when booking

For your **FREE SURVEY** call Steve
on **01980 621621**



Mr and Mrs Germany of Fifield are delighted with our quality and service.

Avon Security

MASTER LOCKSMITHS

Engraving Service
Now Available

- > Brass
- > Plastics
- > Aluminium
- > Glass
- > Trophies
- > Gifts

Free Advice &
Quotations
On Securing
Your Property
& Belongings

Key Cutting
Locks Supplied & Fitted
Access Control
Safes
PVCu Locks
Master Key Systems
Lock Repairs
Door Furniture & Ironmongery
Transponder Car Keys
Keys To Code
Watch Batteries & Straps
Emergency Call Out Service



01980 626000

21, Salisbury Street, Amesbury, Wiltshire, SP4 7AW
www.avonsecurity.net



Red Lion East Chisenbury



Michelin starred at food
at a friendly village price



Winner of Best Sunday Roast Wiltshire Life 2015

Book or pop in for our lunch time set menu Monday to Friday

2 Courses for £18 or 3 for £24

Also available every weekday lunchtime

Sandwiches, bar snacks & pub grub for under £10

www.redlionfreehouse.com 01980 671124

D Taylor

Bricklayer & General Builder

**All Building Works
Including Extensions, Garden Walls, Patios,
Roof Repairs, Plastering
Floor & Wall Tiling etc**

**01980 554008
Mobile No: 07719 916854**

Wags & Whiskers Pet Care Services

Putting All Your Pet's Needs

**DOG
WALKING**

**HOME
SITTING**

**PET
TAXI**

**PET
SITTING**

**FULLY
INSURED**



**FRIENDLY
&
RELIABLE
SERVICE**

**ALL DAY
ADVENTURE**

Tel: 01980 670261

Mob: 07969 284913

Email: wags2whiskers@live.co.uk

Hope and Faith Wedding Services

Planning & Co-ordination of your
Wedding or Event
Venue Decoration
Hire Services

Contact us for details of what we can do
for you

www.hopeandfaithweddings.co.uk
enquiries@hopeandfaithweddings.co.uk

Tel: 07835773714



FitSteps Wed 1830 £4.50 per class

Fitness Yoga Wed 1915 £4.50 per class

Both Wed classes on same night £7.00

**Phoenix Hall, Netheravon
Contact Selaine
07801 427358**



Coombe Electrics

Repairs, alterations. New consumer units. Condition reports for landlords and insurance purposes. Fault finding, etc.

Reliable and professional service. No call-out charges for local area. All work fully certified and in accordance with wiring and building regulations.

Call Steve on 07508 621120
or 01980 670345, or email:
steve@becker.globalnet.co.uk



Avon Small Saints Pre-School

Open to 2- 5 year olds

Whole and part day sessions plus lunch club available
Monday—Friday during school hours term time only
We follow the Early Years Foundation Stage Curriculum
and our children enjoy learning through play

For more information, please contact Elka Priddin on:

01980 671681 www.avonsmallsaints.co.uk

Ofsted Reg. No. EY338057 Reg. Charity No. 1033639

GRAHAM BUCKLAND SERVICES

General building maintenance: plumbing, Carpentry, glazing, brickwork, etc
Free quotes and reasonable rates

'Man with a Van' hire.
Removals and House Clearance
Undertaken

Tel: **01980 670870**
or **07831 889 666**

ELSTON VETERINARY CLINIC

ELSTON LANE, SHREWTON
Dr. Enid Frantilla, DVM MRCVS
Small Animal Medicine and Surgery
Providing high quality pet healthcare
and a caring, friendly professional service
HELPING YOU TO HELP YOUR PETS!!
Consultations by appointment, Mon-Sat
For appointments or enquiries, and
24 HOUR EMERGENCY SERVICE
01980 621999

Southern Chimney Services

CHIMNEY SWEEPING & SURVEYS
POTS&COWLS FITTED
FLUE LINER INSTALLATIONS
BURNER INSTALLATION

FOR RATES & APPOINTMENTS
CALL PETE ON 07432 899715

TIM BUCKLAND BOILER MAINTENANCE

FOR SERVICE AND BREAKDOWNS

Friendly and efficient service
Wide stock of boiler spares in stock

VERY COMPETITIVE PRICES

Also AGAs and RAYBURNS serviced

Tel: **01980 625846**

KD WORSDELL

Carpentry & Joinery
Building Works & Maintenance
Bathrooms and Kitchens

Please Call
01980 630545
Or
07759 586162

ABSOLUTE LANDSCAPES

Mr Wayne Bawden
City & Guilds qualified (Horticulture)

'Professional, experienced local landscaper'
Drives / Patios / Paths / Decking / Fencing
Hedge Cutting & Reduction
Lawn Replacement (turf or seed)
Complete Landscape of Gardens
Renovation and Restoration.

Portfolio of work done available on request.
Free estimates, please call Wayne
01980 671726 / 07795 058379

Sarah Faber
Your local contact for



Rose Petals



Your Local Interflora Florist

47 Estcourt Road
Salisbury, Wiltshire, SP1 3AS
Tel: 01722 321840
Web: www.rosepetalssalisbury.co.uk
Email: info@rosepetalssalisbury.co.uk

OIL FIRED BOILERS

For prompt reliable –
**SERVICING
REPAIRS
COMMISSIONING**

Call **Tim Walsh**

Tel. **01980 652803**
Mobile **07919603884**



Plumbing, Heating, Electrical & Renewable Energy

Solar Thermal & PV, Air & Ground Source Heat Pumps, Ventilation, Boiler Replacements. Domestic, Commercial & Industrial Contractors. Family Business Established 1970.

Free Estimates and Advice:
Tel: 01980 670667 Fax: 01980 670811
www.rgvengineering.co.uk info@rgvengineering.co.uk



**MODERN & TRADITIONALLY
DESIGNED MEMORIALS**

M J SLY
Monumental Stonemason

*New Memorials, Additional Inscriptions
Restorations, Free Home Visits
Free Brochure
Marlborough (01672) 516797
Email: martin@mjsly.co.uk
Website: www.mjsly.co.uk
Workshop & Showroom at Pelham Court,
London Road,
Marlborough, Wiltshire*

MOBILE HAIRDRESSER

Ring Donna
on
07711 579403



B REPAIRED
Musical Instrument Repairers

Graham & Yvonne Ballard
The Music Studio 8 Thurlow Close
Amesbury Nr. Salisbury
Wiltshire SP47QG
01980 625380
07957 806401/2
www.brepaired.co.uk

“PAMCAKES”

Bespoke Cakes for your special occasions (any age group). Traditional and 3D, cupcakes and some Wedding Cakes. See my FB page “Netheravon’s Pamcakes” for more details & website pamcakesofnetheravon.co.uk pamcakes@write.me or call 07919656141

**THE OLD POST OFFICE B&B
EVERLEIGH ROAD, HAXTON**

Double, twin, single & family suites

Call Jackie to book on
01980 671 640 / 07715 419 600

www.theoldpostoffice-wiltshire.co.uk

GRAHAM C BROWN & SON

Oil Boiler Servicing, Commissioning & Repairs

- Fully Experienced
- Fully Qualified
- Fully Insured



ESTABLISHED 1982

Telephone: 01980 622737

Science Tuition

Qualified Science Teacher and Examiner
Science GCSE and Chemistry at A level and IB

Helping you get the grades you need.

For more details contact Ellen Oades on 01980 671760 or 07881 206507

Tina's Hairdressers

High Street, Netheravon
Unisex Salon
Tel: 01980 670628

Tue 9-5 Wed 9-2 Thurs 1-7
Fri 9-6 Sat 8.45-2

TIPZ & TOEZ
nails now available
Appointments not always necessary

Phil Wakeford GARDENING & LANDSCAPING



Landscape Construction · Pruning Fruit Trees & Roses
Garden Maintenance & Advice · Lawn Mowing
25 Years Experience · Flower Meadows

01980 670718 07194412396

Bits & Pieces (Durrington Ltd)

BUILDING, GARDENING & DIY

PETS, PANELS, AGGREGATE

37 - 39 Bulford Road, Durrington
Wiltshire SP4 8DL
Tel: 01980 655552
Fax: 01980 652351

Proprietors: P & M Conn

GDB TECHNICAL SERVICES LIMITED Computer/IT support

Small business and Home users
Networking issues/installations
PC Problems
Tuition
General IT advice/help
Upgrades/Data Recovery
Service Support Options

Call 01980 623052 or visit
www.gdbts.com to see if we can help.

M NASH & P WILKINS

ALL LANDSCAPING WORK UNDERTAKEN
FENCING*PATIOS*PATHS*PONDS*
BRICKWORK
HEDGE CUTTING*GARDEN CLEARANCE
GRASS CUTTING

Tel: MIKE 01380 840767
Mobile: 07977 950654
Tel: PAUL 01380 840763
Mobile: 07970 557002



All aspects of tree care and hedge maintenance
professionally undertaken

ESTABLISHED IN 2000

Free Quotations and Fully Insured

01980 670032 07712 006706

Salisbury Garden Machinery



For all your garden machinery needs.
Sales-Service-Repair-Hire

22 Newton Rd, Churchfields, Salisbury. SP27QA.
www.salisburygardenmachinery.co.uk 01722 322414



We stock a large range of animal feeds including mixed corn, layer-pellets, dog food and various horse feeds, horse bedding and wormers plus the complete Rutland electric fencing system

We also supply Briswim swimming pool chemicals at an unbeatable price
FREE HOME DELIVERY!

Contact: Justin Young, A.M.T.R.A.,
SQP (Regional Manger)
07850 184111 / 01722 320316



WILTON CARPETS

JonCard

Your local contact for:

Great Carpets
Great Choice
Great Prices

Full Measuring, Estimating
& Guaranteed Fitting

Email: joncard@wiltoncarpets.com
01722 742733

PEST CONTROL SERVICE

RABBITS, RATS, MOLES
WASPS, SQUIRRELS
BIRD PROOFING

CALL NIGEL

01980 670804
07854 828904

YOGA CLASSES ENFORD VILLAGE HALL EVERY MONDAY

Beginners/Gentle yoga 6.00—7.15pm
Intermediate Yoga 7.30—9.00pm

For details of other yoga classes visit
yoga@emmapetitt.co.uk
Emma on 01980 670510

SEAN DEVINE PAINTER & DECORATOR



Free estimates. Fully insured.
For local professional service call:
01980 630864 or 07870 454884

Local Freelance Florist

For all occasions including
**Funerals, Weddings,
Anniversaries**

For something special and
personal at competitive rates
call Kate on 07906 580361
kcrobinson@hotmail.co.uk



M.A.B HEATING



Boiler and Heating Services

Oil, Gas and LPG

Very competitive charges for boiler servicing and breakdowns
Boiler Replacements
Professional and friendly service
7 Days a week inc Bank Holidays

Please call Mark on:

Tel: 01747 828689 or Mobile: 07974 249287

THE MOTOR GARAGE LTD

Max Rowley
Manager

Telephone: 01980 670348
Mobile: 07970 785284

www.themotorgarage.co.uk
max@themotorgarage.co.uk

The Motor Garage
Netheravon, Salisbury, Wiltshire, SP4 9RH

Soft Furnishings

by Helen Judd

Loose covers
Cushions
Curtains
Roman blinds
Fabric sales

For further information call:

Tel: 01980 625 442
Mob: 07971 028 972

VILLAGE COMMITTEES

PARISH COUNCIL

Chairman	Richard Roberts	671055
Vice Chairman	Nigel Murray	671684
Parish Clerk	Elizabeth Harrison	670034
Councillors	Michael Fay	670553
	Jane Young (Parish Hall)	670532
	Anthony D'Arcy Irvine (Rep Tidworth & Pewsey Area Boards/Village Hall)	670501
	David Harbottle (Roads and Highways)	670932
	Richard Petitt (Planning Committee/ Parochial Church Council)	670510
	Gareth Holden (PR/Press Officer)	671195
	Bruce Waight	670113
	Pat Holdway	671792
	Keron Taylor (Rights of Way)	07962 266250

NETHERAVON SCHOOL

Chairman of Governors	Fanny Middleton
Head Teacher	Hayley Humphris

NEWSLETTER

Chairman	Tanya Becker
Vice Chairman	Linda Mundy
Secretary	Linda Mundy
Treasurer	Ros Perry
Advertising	Gay Monk
	Jacqui Elkins
	Jane Young
	Ann Houghton
	Clare Burge
	Kriss Mitchell

PAROCHIAL CHURCH COUNCIL

Church Wardens	John Poole Warren
	Henry Middleton
Treasurer	Gill Gould
Secretary	Amanda Murray
Council Members:	John Manser
	Jonathan Walsh
	Judy D'Arcy-Irvine
	Bruce Carter
	Frank Horsford
	Mary Burdick
	Gai Rickett
	Sue de Candole

VILLAGE HALL

Chairman and Booking Officer	Judy D'Arcy-Irvine
Vice Chairman	(670501)
Treasurer	Steve Becker
Secretary	Hannah Tucker
PC Rep	Kriss Mitchell
Youth Club	A D'Arcy Irvine
Camera Club	Andy Lucker
Football Club	Jane Young
PCC	Ollie Stagg
Newsletter	Judy D'Arcy-Irvine
Property Officer	Jacqui Elkins
Grounds Officer	David Spencer
Gardening Club	Hamish Scott Dalgleish
Short Mat Bowls	Sally Parker
Red Lion	David Spencer
	Ian Fribbins 31

PARISH HALL

Chairman	Richard Petitt
Treasurer	Bob Taylor
Secretary	Gareth Holden

FOR YOUR DIARY July 2015

1st	Wed	Short Mat Bowls, 7.30pm / Darts Night, The Swan, 8.30pm
2nd	Thu	Black Box, Blue Bin / The Hub Café, 9.30am - 11.30am, The Swan Inn / Circuits, Parish Hall, 7.00pm / Camera Club, 8.00pm, Village Hall
3rd	Fri	Youth Club, 6.00pm, Village Hall
4th	Sat	Enford Cycling, 9.30am, The Swan / Youth Football Session, 10.00pm, Enford Playing Fields
5th	Sun	Holy Communion, 9.00am
	Mon	
7th	Tue	Quiz, The Swan
8th	Wed	Short Mat Bowls, 7.30pm / Darts Night, The Swan, 8.30pm
9th	Thu	Household and Gardening Waste / The Hub Café, 9.30am - 11.30am, The Swan Inn / Circuits, Parish Hall, 7.00pm
10th	Fri	Youth Club, 6.00pm, Village Hall
11th	Sat	Youth Football Session, 10.00pm, Enford Playing Fields/The Journey to Gallipoli, Netheravon Phoenix Hall, 6.30pm for 7.00pm
12th	Sun	Team Service, Netheravon, 10.30am / Messy Church Enford Church, 4.00pm
13th	Mon	
14th	Tue	Quiz, The Swan
15th	Wed	Short Mat Bowls, 7.30pm / Darts Night, The Swan, 8.30pm
16th	Thu	Black Box, Blue Bin / The Hub Café, 9.30am - 11.30am, The Swan Inn / Circuits, Parish Hall, 7.00pm
17th	Fri	Youth Club, 6.00pm, Village Hall
18th	Sat	Youth Football Session, 10.00pm, Enford Playing Fields
19th	Sun	Family Service, 10.30am / AVCC's Club Day, 1.30pm to 7.30pm
20th	Mon	
21st	Tue	Evensong, 5.30pm. Service taken by the Bishop of Ramsbury / Quiz, The Swan
22nd	Wed	Short Mat Bowls, 7.30pm / Darts Night, The Swan, 8.30pm
23rd	Thu	Household and Gardening Waste/ The Hub Café, 9.30am - 11.30am, The Swan Inn / Circuits, Parish Hall, 7.00pm
24th	Fri	Youth Club, 6.00pm, Village Hall
25th	Sat	
26th	Sun	Evensong, 6.00pm
27th	Mon	
28th	Tue	Quiz, The Swan
29th	Wed	
30th	Thu	Black Box, Blue Bin / The Hub Café, 9.30am - 11.30am, The Swan Inn / Circuits, Parish Hall, 7.00pm
31st	Fri	