

Enford Newsletter

What is Happening in and Around Enford



CONGRATULATIONS

to

The Hub

on a very successful first
year

Thank you to all those involved in
organising and running
Enford's Community Café



February 2016

Check our advertising section
for local trades and services



WELCOME

We would like to wish a very warm welcome
to all who have recently moved into the Parish of Enford.
We hope that you will find many new friends and neighbours

USEFUL NUMBERS

EMERGENCY SERVICES

DOCTORS

630221	UPAVON	The Surgery, Fairfield
652378	DURRINGTON	The Surgery
652221	DURRINGTON	Cross Plains Surgery

HOSPITAL

01722 336262	SALISBURY DISTRICT HOSPITAL
--------------	-----------------------------

POLICE

101	POLICE
-----	--------



OTHERS

0800 111 999	GAS
0800 80 70 60	ENVIRONMENTAL AGENCY
0345 988 1188	FLOOD LINE
0800 072 72 82	ELECTRICITY
01980 674700	PLAINWATCH

DURRINGTON LINK

01980 594857	LINK (Durrington & District)
--------------	------------------------------

SCHOOLS

01980 670339	ALL SAINTS C of E PRIMARY, Netheravon
01980 630360	RUSHALL C of E PRIMARY, Rushall
01980 670268	ST MICHAEL'S C of E PRIMARY Figheldean
01980 652467	AVON VALLEY COLLEGE SECONDARY, Durrington
01672 565000	PEWSEY VALE SECONDARY SCHOOL, Pewsey

WHAT CAN YOU DO TO REDUCE CRIME ON SALISBURY PLAIN?

If any crime is taking place call 999 and do not under any circumstances challenge the offenders.

Report suspicious activity to PLAINWATCH (01980 674700) or PLAINWATCH@landmarc.mod.uk. The more information received the better, e.g. time, place, vehicle registration, description of individuals and vehicles.

Health and Safety reminder for all Military Training Areas and Ranges:

Do not touch or tamper with Military debris.
 Wash your hands before you eat.
 Clean your footwear before you enter your car or home.

ENFORD NEWSLETTER

CONTENTS

Temporary Closure of A345 4
 Enford Parish Council 5
 Community Speed Watch 6
 Public Spirited/Carol Singing 6
 Camera Club/Art Classes 7
 Youth Football/The Hub 8
 Film Club/Fishing 9
 Ballroom & Latin Dance Classes/
 Knee Blankets 10
 Fairtrade Supper/
 Create, Craft, Learn, Show 11
 Music at Enford Village Hall 12
 Newsletter Website 13
 Youth Club/Wanted 14
 Messages/SPTA News 15
 Darts/Cycling 16
 BMXers and Skateboarders 17
 School Governor/A Christmas Carol 18
 Gardening Club/For Sale 19
 Enford Community Fund 20
 Village Hall 21
 Lent Lunches/Durrington Surgery 22
 Villa For Rent/Avon Valley Practice 23
 All Saints 24
 A Vicar’s Musings 25
 Advertising 26
 Village Hall Committees 31
 February Diary 32

**The next Newsletter
 deadline is**

**FRIDAY
 19th February 2016**

All items for inclusion, whether they are handwritten, typed or via e-mail, **MUST be submitted by the date of the meeting.** These articles may be handed in to any Newsletter Committee member.

**Please send e-mails to
 tanya@stbecker.plus.com**

Enford Newsletter Committee reserves the right to reject or omit from publication any material that is considered by majority of Committee Members to be detrimental to any person or which is not in the best interest of the community as a whole. All letters and articles must be signed, but the Committee will withhold the name of the writer if this is requested at the time of sending it in.

ENFORD DEFIBRILLATOR

**The defibrillator is in a yellow box on the wall of Hill House, 9 Longstreet, SN9 6DD
 Grid Ref SU142515.**

It is located in the centre of Enford 25 m north of The Swan next to the parish notice boards.

If you think you need to use the defibrillator call 999. The Emergency Service will give you the code to get into the cabinet.

**YOU CAN READ MORE ABOUT IT AT,
WWW.ENFORDNEWSLETTER.ORG
 WHERE YOU WILL ALSO FIND A LINK
 TO A SHORT VIDEO SHOWING YOU
 HOW TO USE IT.**

TEMPORARY CLOSURE OF A345 (PART) ENFORD **Wiltshire Council**

Section 14(1) of the Road Traffic Regulation Act 1984

Temporary Closure of: A345 (Part), Enford (Ref: TTRO 4158)

Notice is hereby given that the Wiltshire Council has made an Order to close temporarily to all traffic:

A345 (Part), Enford; from its junction with Enford Hill in a northerly direction to its junction with Footpath 31, Enford (West Chisenbury Farm).

To enable: Wiltshire Council to carry out kerbing, carriageway resurfacing / patching work, road marking and adjustment of ironworks.

Alternative route:

Via A345 (unaffected length) – A303 – A338 – A342 – A345 (unaffected length) and vice versa.

This Order will come into operation on 14 March 2016 and it is anticipated that the closure will be required on weeknights only between the hours of 19.00 and 06.00 until 24 March 2016. It is anticipated that the works will take the stated duration to complete depending upon weather conditions. Access will be maintained for residents and businesses, although delays are likely due to the nature of the works. The Order will have a maximum duration of 18 months.

For further information please contact Atkins on 01225 730360 (office hours) or 01225 777234 (outside of office hours / duty manager).

Sustainable Transport Group, County Hall, Bythesea Road, Trowbridge BA14 8JN

10 March 2016

JUMBLE SALE

Parish Hall

Saturday 6th February at 2.00pm

ENFORD PARISH COUNCIL

I hope 2016 has started well for you and you are on track with any new year resolutions!

Here are a few notes updating you on recent events. You can, however, always keep up to date by reading the full minutes of the Parish Council Meetings which are posted on our notice boards or by visiting the excellent Enford Newsletter website at www.enfordnewsletter.org click **Parish Archive** at the top of the home page, and under **Choose a Category** select **Parish Council**. All our minutes are listed here by year and month.

Bus Services

Wiltshire Council, in their quest to save money, are conducting a review of subsidised bus services. People are invited to have their say by completing the survey at www.wiltshire.gov.uk/subsidised-bus-services-consultation or by phoning 03004560100 to request a paper version.

Everleigh Household Recycling Centre (still more savings needed)

Following WC's plan to review this recycling centre, Nigel, Anthony and myself attended the (packed) Area Board Meeting to discuss the future of the tip. We were presented with numerous statistics that showed how under used this centre is when compared with the other sites in Wiltshire. A number of residents passionately expressed their views about the inconvenience this closure would cause. To date we have not heard the outcome of this consultation.

Gypsy and Traveller Caravan Site

As you are probably aware, Wiltshire Council refused this application primarily on the following grounds; the dangerous access, landscape issues and the overprovision of G&T sites in eastern Wiltshire. The applicant now has six months in which to lodge an appeal, if they wish, against this decision. Thank you to everyone that wrote to Wiltshire Council, in excess of 160 letters, the vast majority objecting to the application on the grounds of the site's unsuitability, are listed on the planning website.

Solar Farm – Coombe

Although all is quiet at the moment, no formal application has been received, we understand a wildlife survey is currently being undertaken on the site. For now we are still holding onto the fighting fund donations (just under £2000) and will monitor any progress from BSR.

A345

The new provisional date for resurfacing from Enford Hill to Compton is 14th – 26th March.

Richard Roberts

Chairman
Enford Parish Council

Community Speed Watch

Would you like to help us monitor the speeds of vehicles in the Enford area?

We are looking for volunteers who have a couple of hours available each month to join our local Speed Watch team.

Full training and equipment provided by Wiltshire Police.

Call Alan Day for details on 01980 670200 or mobile 07941 291165
or email day_alan@btconnect.com

Public Spirited



Those of you who use the footpath to Fifield will have noticed that the path has, over the past couple of years, steadily become narrower due to the overgrowth of weeds, grass etc.

Whilst walking our dogs, I noticed that much of the pathway had been cleared and assumed it was the Council. However, on my walk last week, grafting away with her spade, was a very public spirited neighbour.

So, on behalf of the community
a HUGE ,HUGE thank you to Julie Holland
your public spirited efforts are very, very
much appreciated

CAROL SINGING

Many thanks to Michael Fay for playing the organ and to Sarah Everett for the mince pies and sausage rolls

ENFORD CAMERA CLUB



Enford Camera Club meet on the first Thursday of each month at Enford Village Hall. Each month, when space allows, we shall be displaying one of our members photos for you to enjoy.

This month's photo was taken by Sue Vergette. Sue sadly passed away over the new year and we have chosen this photo in loving memory of Sue.

ART CLASSES

Enford Village Hall

Friday mornings 10.00 am to 12.30 pm

All abilities welcome

**£12 per session in blocks of 5 or 6 sessions
which includes morning coffee!!**

Do come along and enjoy being taught by Bev Watts, an experienced and well known Art Teacher (website: www.bevwatts.co.uk)

All subjects covered from landscapes to still life in mixed media.

**For more information, please contact
Sheila Delany on 01980 670760**



Enford Football Club Children's Coaching Sessions



The next coaching sessions will take place on the field
at Enford Village Hall on
Feb 27th, March 5th, 12th and the 19th

We then break for Easter half term and start again on April 16th, 23rd 30th
and May 7th, 14th, 21st and 28th

The sessions run from 1000hrs until 1100hrs
they cost just £2:50 per child per session.

Any child who wants to take part should be aged between 5 and 11 years old and
they should bring their own shin pads, suitable footwear and a drink.

**HAPPY BIRTHDAY
TO US!!**



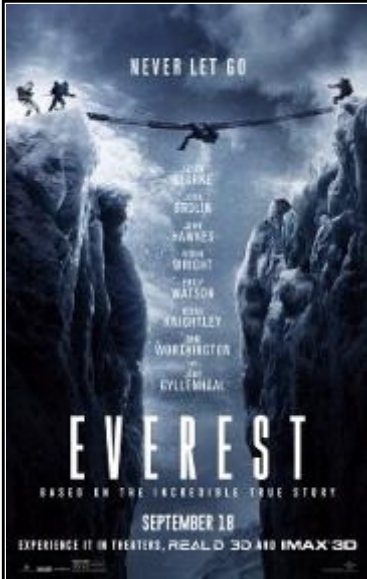
The Hub is 1 year old on
4th February!

Come and celebrate....

Help us eat our birthday cake and collect a free
raffle ticket to win a special birthday prize.

The Hub Community Café,
The Swan, Enford

Every Thursday 9.30-11.30am



ENFORD FILM CLUB

**TUESDAY 23rd February
ENFORD VILLAGE HALL**

EVEREST

On the morning of May 10, 1996, climbers from two commercial expeditions start their final ascent toward the summit of Mount Everest, the highest point on Earth. With little warning, a violent storm strikes the mountain, engulfing the adventurers in one of the fiercest blizzards ever encountered by man. Challenged by the harshest conditions imaginable, the teams must endure blistering winds and freezing temperatures in an epic battle to survive against nearly impossible odds.

Doors open at 7.00 pm

Drinks available from the Bar

Tickets £5.00 each booked in advance and £6.00 on the night

Lifts can be arranged for anyone who would like to come
 If you wish to join the Mailing List, would like to book tickets, or need a lift,
 please contact 01980 670501 or email enfordvillagehall@btinternet.com



Chisenbury Fishing Syndicate
 Fly Fishing on 2.5 miles of the Upper Salisbury Avon
 for Brown Trout and Grayling
 Membership Available for 2015
www.chisenburyfishing.com

BALLROOM AND LATIN DANCE CLASSES

ENFORD VILLAGE HALL

**Are you a "Strictly" fan?
Want to get up and have a go?**

We are investigating the possibility of Ballroom & Latin dance classes in the Village Hall but need to judge the level of interest.

So whether you see yourself as Anton Du Beke or more like Ann Widdecombe, we'd love to hear from you.

**Please ring Pauline on 670154 or Diane on 671769
(Or come and chat to us at The Hub)**

Knee Blankets

In Aid of All Saints Church Enford Roof Repairs

Thank you once again to everyone who contributed to the creation of so many knee blankets. The amount raised was £2000.51, an astonishing achievement from such a simple idea. Ladies, without your, talent, enthusiasm and dedication the project would not have been possible. Thank you, also, to all those kind people who donated so generously.

The Blankets have been given to the following:-

The Salisbury Hospice, Salisbury, in memory of John Winter, Sarah Campbell and Andrea Fox.

The Camelot Care Home, Amesbury. Daunstey House, Devizes (Link with Jacki Brightman)

The Bupa Care Home, Market Lavington. One of the blankets was given to Barbara Waight. Barbara loved Enford and organised, with other ladies, monthly afternoon teas for the Senior Citizens of the Village.

Saltash (Cornwall), in grateful thanks for the £212.00 donation from The Patti Pan Café. Some blankets were given to a Dementia Care Home and others to a Care Home not far from the Café.

The staff who received the knee blankets loved the cheerful colours, they were touched by our thoughts and kindness, they were accepted with enormous enthusiasm and appreciation.

My heartfelt thanks to you all.
Lowenna Harbottle

FAIRTRADE FORTNIGHT - SUPPER EVENING!

In support of Fairtrade Fortnight we will be holding a supper in Enford Village Hall on Saturday 27th February, 7.00pm for 7.30pm.

The evening will include a 2-course meal (sourced mainly from delicious Fairtrade ingredients), a bar, raffle, and live music!

Tickets are £12 each and include the first drink.

Tickets can be bought from

Pip Symonds Tel. 07854 827233 and Diane Christie Tel. 07753 811666.

All monies raised will be split between Traidcraft Exchange which supports the development of Fairtrade, and Home Start, one of the UK's leading family support charities with a branch in Amesbury.

Create - Craft - Learn - Show

Do you enjoy making and creating?

If you enjoy hobby craft be it with wool, fabric, beads, felt, paper etc please come and join us at The Swan on Tuesday mornings

Starting 26th January 10.00 - 12.00

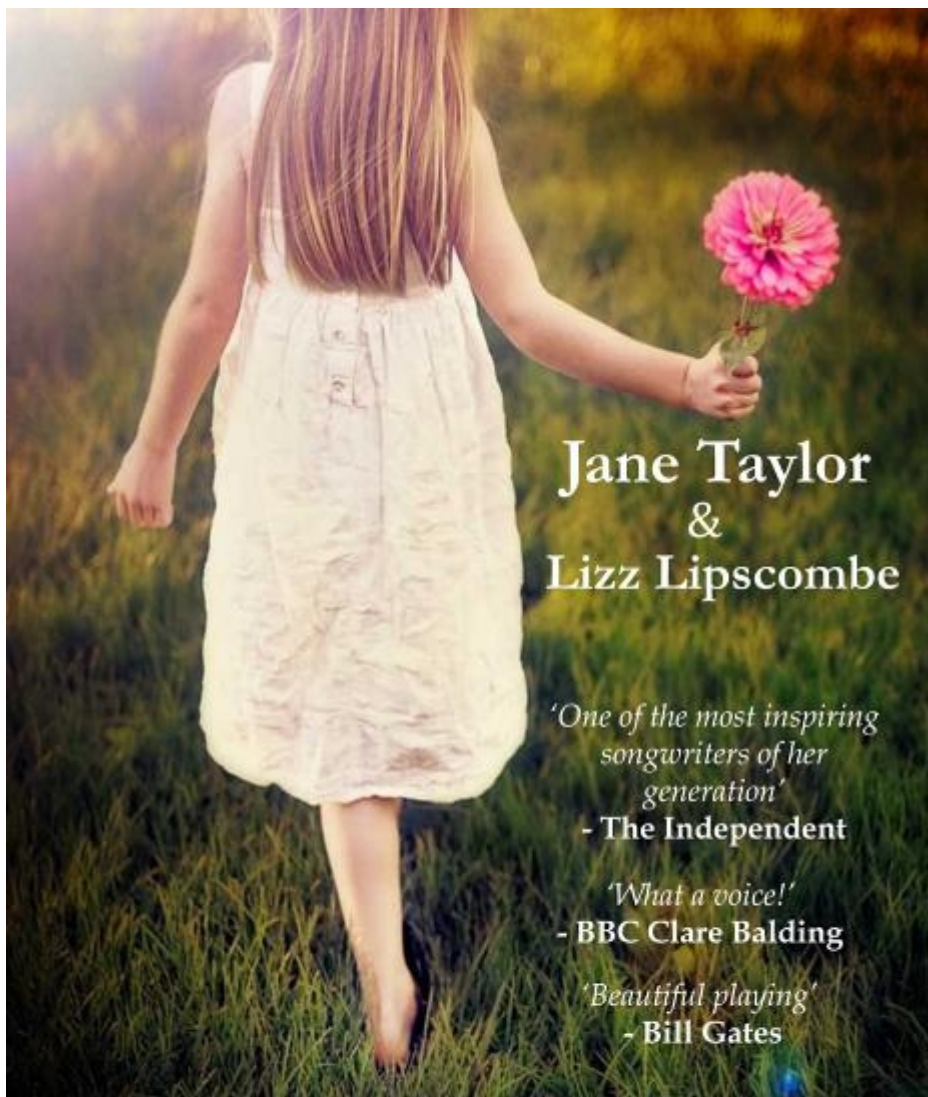
Any craft medium you may be interested in will be very welcome

Feel free to bring along any samples of your creations to show and share (or just yourself)

Anybody who may be slightly interested is more than welcome

The first few gatherings are to explore where we can go with this potentially exciting craft club

**For more information contact Jacki Brightman
01980 671 598**



**Jane Taylor
&
Lizz Lipscombe**

*'One of the most inspiring
songwriters of her
generation'*

- The Independent

'What a voice!'

- BBC Clare Balding

'Beautiful playing'

- Bill Gates

Saturday 5th March

Enford Village Hall

Doors 7.30 Starts 8pm - Tickets £10 (adv) £12 (door)

Tel / text 07832 133128 or email lizz@lizzlipscombe.co.uk

www.janetaylor.co.uk

www.lizzlipscombe.co.uk

Saturday 5th March

Enford Village Hall

Jane Taylor & Lizz Lipscombe

This is a chance to see two unique, award winning artists perform a magical evening of music right here on your doorstep!

Jane Taylor is one of the most inspiring songwriters of her generation. BBC presenters Clare Balding, Tom Robinson, Jonnie Walker and Bob Harris are big fans. She has performed with Seth Lakeman and Paulo Nutini, opened for Jools Holland and recorded with Massive Attack guitarist Angelo Bruschini. Her album, *Compass*, won 'BEST ALBUM' at the Independent Music Awards and Jane was recently invited to record a special programme at Maida Vale Studios for the BBC.

She is joined by the popular and talented blues violinist Lizz Lipscombe, who recently moved to Enford! Lizz performs around the world with her violin duo 'Elektra'. She played at the 2012 Olympic Games for Bill Gates and friends. She also performed as a soloist with The King Singers in Bath Abbey in 2015 and recently she appeared on the BBC's 'later...with Jools Holland' show with Richard Hawley.

Newsletter Website

Did you know that the newsletter runs a website on behalf of the parish?

Parish Archive As well as holding all the newsletters from 2007 onwards, you can also view minutes and a multitude of other documents from the Parish Council, Village Hall, Community Fund and Parish Plan committee. There are also old maps, photos and links to many historical documents relating to Enford.

Calendars of Events Keeps you abreast with what is going on in the village. If you have a Google account, you can add these calendar to your smartphone (search for 'Enford Newsletter' and 'Enford Village Hall' and never miss another jumble sale ever again!

Contacts Comprises a list of local advertisers and another list of useful contacts.

Committees & Clubs There are several web pages here, dealing with: the Parish Council; Village Hall; Parish Plan; Neighbourhood Watch and Community Fund.

On each page you can also find links to: the local weather forecast; Wiltshire Council Newsletters;

Enford on Facebook  and the Broadband blog.

Visit <http://enfordnewsletter.org/index.php>

Enford and Avon Valley Youth Club

Youth Club at Enford Village Hall every Friday from
6pm to 8pm.

URGENT APPEAL

We desperately need more adult helpers. This doesn't have to be every week so any time you can spare would be appreciated. If you are interested please come along to the Youth Club on a Friday evening and have a chat with us. All leaders/helpers are CRB checked. If we don't have enough leaders on a club night we have to cancel the evening.



WANTED

A volunteer to take over the running of the newsletter website. Must have own computer and internet connection and needs to be computer literate. Training, and a leisurely handover, will be provided.

Further details available from Steve on steve@becker.globalnet.co.uk or 670345.





CONDOLENCES

to

**Amanda Murray and family
on the death of her father
Tony Mitchell**

CONDOLENCES

to

**family and friends
of Mary Phillimore
who has sadly passed away**

CONDOLENCES

to

**Bill Vergette and family
on the death of his wife, Sue**

WELCOME

**To all of our new neighbours
who have recently moved into
Enford Parish**



THANK YOU KRISS

The Village Hall Committee would like to thank Kriss Mitchell for her work as secretary over the past two years. We wish you 'good luck' and happiness.

SPTA NEWS

For Salisbury Plain Training Area News, giving times of live firing, current and upcoming exercises go to

<https://www.gov.uk/government/publications/salisbury-plain-training-area-spta-newsletter>

Genuine Land Rover Dog Guard or a Freelander 2

In very good condition.
Reason for sale, dog is now too old to travel!



Apply 01980670932.

CLAIRE PERRY

*Working hard for the
Devizes Constituency*

✉ Claire Perry MP
House of Commons
London
SW1A 0AA

☎ 01380 729358

🌐 www.claireperry.org.uk

✉ claire.perry.mp@parliament.uk



*I hold regular surgeries around the Constituency
- please call or email to book an appointment.*

AN EVENING OF DARTS

EVERY WEDNESDAY 2030HRS AT
THE SWAN

HOPE TO SEE YOU THERE!!!



ENFORD CYCLING

Enford Cycling Group aims to give riders of all experience the opportunity to explore some of our beautiful local countryside.

Weather permitting, we will run these every 4 weeks on the first Saturday of the month.

The next meeting will be on Saturday 6th February at 9.30am. The route will suit most abilities and will be from the Swan to a coffee stop and back - in the region of 15 miles.

If you are interested, please contact Nigel Murray on either 01980 671684 or by email at nigel.murray@spitfireuk.net - or indeed just turn up on the day.

Calling all BMXers and Skateboarders across Pewsey Vale

Are you aged 13 to 19?

If you are join us on a trip to

Adrenaline Alley

Tuesday February 16th 2016

Refundable deposit of £20

*You will need a parental consent and a membership for
the Adrenaline Alley site will be set up for you.*

*Coach leaves Pewsey 6am and will carry bikes – you will
need to book your bike to be transported*

Call Dawn on 01672 563917 or email
dawnwilson917@yahoo.com to book.

We need your parents contact details to collect information and
permission for your membership for this trip by January 29th.

This trip is funded by Wiltshire
Council Youth Funds for
Pewsey Community Area and
organised by PCAP supported
by Pewsey Youth Group

Adrenaline Alley*
6 Priors Haw Road
Corby, Northamptonshire
NN17 5JG
www.adrenalinesalley.co.uk

Wiltshire Council
Where everybody matters



Netheravon All Saints CE Primary School Is Looking For Additional Governors

Netheravon School is going through some exciting changes at the moment with the anticipated arrival of a new Head Teacher in September 2016.

Governors carry out the most important voluntary roles in education and are an integral part of the school leadership team. They are responsible for setting the school's vision, ethos and strategic direction, holding the Head Teacher to account for educational performance and overseeing the financial performance of the school. Netheravon All Saints is a Church of England School and therefore our governors are also responsible for setting the Christian ethos of the school.

Being a governor is extremely rewarding but involves time, energy and a willingness to become involved in the life of the school on a regular basis. You can find out more about becoming a governor on the National Governors Association website (www.nga.org.uk).

We would like to hear from anyone with the relevant enthusiasm and skills to assist us but we have particular vacancies for Foundation governors who oversee and monitor the school's Christian character.

Please contact our chair of governors Fanny Middleton for more information - fannysurtees@btinternet.com

The Rain or Shine Theatre Company A Christmas Carol

On Tuesday 8th December the Rain & Shine Company returned to Enford Village Hall with their production of A Christmas Carol.

This small company has delighted us several times over the past few years and once more we were not disappointed.

The company of five managed to tell the story of the old miser who turns into a kind and generous man in just over eighty minutes. The script was clever and witty and the actors fast moving and full of energy.

Despite their having a very small stage and basically the same set of scenery throughout, they were able to transport us with ease from Christmas Past to Christmas Future.

It was, indeed, an excellent production and many of us would have left that night heartened that the spirit of Christmas is still very much with us.

Thank you to all those who helped to organise the evening.



ENFORD GARDENING CLUB

Thursday 11th February 2016

Auriculas

Lesley Roberts

Pop's Plants of Downton, near Salisbury are Chelsea Gold Medallists and holders of four Plant Heritage National Collections of Auriculas. They are particularly keen on the old Florists' show auriculas, and if you are not already an auricula devotee, they hope to introduce you to this extraordinary and captivating flower - the product of more than four hundred years of dedicated hybridisation. But be warned, these fascinating plants can be addictive!

As always the meeting will be at Enford Village Hall, SN9 6DD
Lifts can be arranged, please ask.
7.00 for 7.15
Entrance £4

Tea & coffee available
Entrance fee: £4.00

Further details from Fanny Middleton, 01980 671645
email fannysurtees@btinternet.com

The Garden Club held its 6th AGM on the 14th January. All the committee were re-elected, the forthcoming programme was discussed and suggestions and ideas put forward and the evening then continued with refreshments and a glass of wine.

Gai Rickett

The financial report and minutes can be viewed at www.enfordnewsletter.org



Vax Compact Upright Vacuum Cleaner
bought as new £90 and used once

Would take £60



2 x 10kg bags of Hydrosolt salt tablets

Call 01980 670404 or email amandamarx22@gmail.com

DIARY DATE 2016

SUMMER FETE AT ENFORD PLAYING FIELD

**Saturday 25th June 2016
1.00pm – 5.00pm
Free Entry**

If you are interested in hosting you own stall at the fete or would like to help at the fete please contact Mandy Farrow. Email: amanda.farrow@chisenbury.co.uk Telephone 671343

Enford Community Fund

Next round of funding applications will be considered in March. Applications should be made by 1st March 2016

The Enford Community Fund comprises all the profits from the fete and fireworks events. One third is paid annually to the Village Hall and the remainder is there to help community projects within the Parish of Enford comprising Enford, East and West Chisenbury, Coombe, Compton, Fifield, Littlecott, Longstreet and New Town. So if you run or are considering setting up a project and might need help with initial costs or equipment, please get in touch.

Applications for awards must be made to the treasurer – Amanda Farrow – by email or letter no later than the first day of the award month (March & September). amanda.farrow@chisenbury.co.uk or 537 East Chisenbury.

The following guidelines will be followed in allocating funds

1. Awards will be considered every 6 months in March and September
2. Awards will be made for individual projects and are not designed to allow awardees to become reliant on the award on an annual/regular basis
3. Awards will be made to causes that benefit the community and not specific
4. individuals
5. No awards will be made for greater than £1000
6. For any award to be granted there must be agreement by at least 75% of the funding committee

Latest Accounts and Awards

The latest accounts for the Enford Community Fund are now available on the Enford Newsletter website. As agreed and in recognition for the use of the facilities at the Village Hall, each year one third of the profit from the fete and fireworks is given to the Enford Village Hall. We had a very successful year in 2014/15 and therefore are pleased to announce that this year the donation amounted to £1616.39, which was duly paid at the end of November.

VILLAGE HALL AND RECREATION GROUND



Contact Details:

Booking Officer 01980 670501
 enfordvillagehall@btinternet.com
 www.enfordnewsletter.org

Chairman 01980 670501
Deputy Chairman 01980 670345
Grounds Officer 01980 670210
Maintenance Officer 01980 670526

Private Parties

Planning a children's party? Celebrating a special birthday or anniversary? The hall is the perfect venue for weddings and parties!

Day	Activity	Time	Contact
Mon	Yoga Beginners Yoga Intermediate	6.00pm – 7.15 pm 7.30pm—9.00pm	Emma Pettitt 01980 670510 yoga@emmapettitt.co.uk
Tues	Enford Film Club	4th Tuesday in the month Doors open 7.00 pm	Steve Becker 01980 670345
Wed	Body Condition- ing & Bootcamp	6.15 pm – 7.15 pm	Helen Gould-Cooper 01980 670324 h.gouldcooper@virgin.net
Wed	Short Mat Bowls	7.30 pm – 10.00pm October to April	David Spencer 01980 670526 spencersgb@yahoo.co.uk
Thu	Pilates	8.45 am – 9.45am	Nicci Caswell 01980 625245 nicccaswell@btopenworld.com
Thu	Camera Club	8.00 pm – 9.00 pm 1st Thursday in the month	Martin Webb 01980 670537 webb14@btinternet.com
Thu	Gardening Club	7.00pm – 9.00 pm 2nd Thursday in the month	Fanny Middleton 01980 671645 fannysurtees@btinternet.com
Fri	Youth Club	6.00 pm – 8.00 p.m.	Sue Greenhow suegreenhow44@sky.com
Sat	Children's Foot- ball Coaching Sessions	10.00am -11.00 am Recreation Ground	Ollie Stagg 01980 670634 olliestagg@wessexwater.co.uk
Sun	Enford Football Club	Recreation Ground	Kevin Bennetts 07808816725 bennetts99@live.co.uk

YOUTH CLUB We would love to hear from anyone who is interested and who can commit to a Friday evening once a month, weekly or fortnightly.

ENFORD FOOTBALL CLUB is running weekly Saturday morning Junior Football Sessions. Contact Ollie Stagg 01980670634 for further information and to join in!

Lent Lunches

Do join us for a simple soup lunch, between 12noon and 1.30pm and support Christian Aid

Date	Venue
10 th Feb	Old School Hall, DURRINGTON SP4 8HP
17 th Feb	Camilla Hall, St Leonard’s Church, BULFORD SP4 9DB
24 th Feb	Brigmerston Farm House, BRIGMERSTON SP4 8HX
2 nd Mar	St Michael & All Angels Church, FIGHELDEAN SP4 8JL
9 th Mar	Phoenix Hall, NETHERAVON SP4 9PJ
16 th Mar	Haxton Farm Cottage, HAXTON SP4 9PY
23 rd Mar	Chestnut House, ENFORD SN9 6AX

BUILDING WORK AT DURRINGTON SURGERY STARTS 4TH JANUARY 2016

As you’re no doubt aware, the population of Durrington and the surrounding area is set to grow due mostly to the Salisbury Plain army re-basing. The impact of the population growth in our area means that Avon Valley Practice has been advised by NHS England that we will require additional space at our existing premises in Durrington, to help us be able to provide health services to a larger number of patients.

We received planning approval on 7th December 2015.

We will therefore be extending the Surgery at Durrington by 122m 2(sq m) which will provide us with an additional three consulting rooms, bringing the total number of rooms to eight. The increased consultation space will also allow us to offer a wider range of services, as well as give us the ability to increase the number of appointments available.

The new layout of the surgery will be displayed in the waiting rooms of both Upavon and Durrington surgeries from January.

Building work will commencing on 4th January 2016. During this time you may experience increased noise levels and reduced parking facilities. The range of patient services offered will not be affected until 1st April 2016 when we will be relocating to Upavon Surgery for a short time whilst internal work is undertaken. We expect to complete the works in June 2016.

Thank you for your interest and co-operation.

Yours sincerely



Dr Ross Russell, Dr Green and Dr Millar-Craig

VILLA WITH POOL FOR RENT IN ST LUCIA



**Two bedroom (will sleep six) two bathroom villa for rent
31st July to 14th August
at the Windjammer Landing Resort
£1000 per week**

**The villa is well equipped with TVs, DVD player, washing machine /dryer,
free wi-fi and the largest infinity pool on the resort**

**Facilities on the resort include choice of 4 restaurants, swimming pools,
tennis courts, children's club, activity programme and water sports**

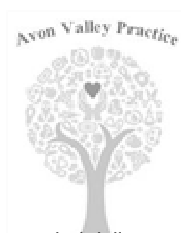
For more details and / or photos please ring 01980 671306.

Do you use Avon Valley Practice?

If so, please note:

Since 1st December 2015 repeat prescriptions can only be requested:

- Online
- In person
- By post or fax (01980 630393)
- Using the secure drop off box at Netheravon shop which is emptied daily
- By telephone (only if you are aged 80 or over, a registered carer with Avon Valley Practice, housebound or aged 12 to 15)



Since 21st December GP appointments will be bookable up to 5 days in advance.
Should you need a follow up appointment with one of the doctors this will be made directly by a healthcare professional.
Appointments will still be available for same day care.

Nurses appointments will still be available to book up to 6 weeks in advance.

**Avon Valley Practice
01980 630221 / 652378
www.avonvalleypractice.com**

ALL SAINTS CHURCH, ENFORD

There is much more information and help to be found on the website at www.avonriverteam.org.uk

CHURCH SERVICES

February

March

7th	Holy Communion, 9.00am
14th	Team Service, Milston, 10.30am
21st	Family Service, 10.30am
28th	Evensong, 6.00pm

5th	Holy Communion, 9.00am
13th	Team Service, Netheravon, 10.30am
20th	Family Service, 10.30am
27th	Evensong, 6.00pm

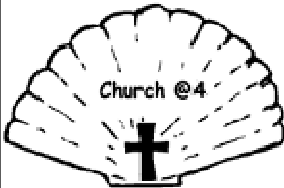
CHURCH CLEANING ROTA

February

6th	Sue Poole-Warren & Hilary Horsford
12th	Tanya Becker & Linda Mundy
19th	Paula de Chalus & Amanda Marx
26th	Lyn Riche & Fanny Middleton



If anyone can spare an hour once every 6 weeks to help with the church cleaning, please contact Amanda Marx 670404 or amandamarx22@gmail.com



Netheravon School
SUNDAY 14th February
4.00pm

Come and join us
Fun - Food - Fellowship
Café Style Church
All Ages Welcome



A Team Vicar's Musings

I'm writing this after I've spent a lovely time walking on a sunny but cold January morning. To help me walk I use two walking poles and during the walk I mulled over who or what would be the equivalent in my life's journey. I came up with the conclusion that it would be my faith and my family and friends. All support me in different ways and are always with me.

As I practice to walk longer, so that I can walk with ease on my pilgrimage to the Holy Land later this year, my use of the poles will increase but the way I use them will change. At the moment I lean quite heavily on them but I envisage a time when I will use them only as a balance as I become more confident in my walking skills. So it is with my faith and family and friends; there are times in my life when I lean quite heavily on them to get me through the tough times. In the easier times they are there helping me to keep a balance to my life.

There are times when I change my walking poles and use one that is similar to a shooting stick. I use this when I have to stand for long periods of time as I can perch on it and take the weight off my knees. So it is in my life, sometimes I need to seek support from others outside my family and friendship circles. However, my faith stays as my core support whatever is happening.

When you reflect on your life who do you see as your "walking poles"? Do you have a core support? Soon we will be starting another set of six sessions called 'Pilgrim Course' which, this time, will be looking at The Creeds. It's one way in helping our faith grow, whether we are long in the Christian faith or are beginning to explore the Christian faith. If you are interested do contact me.

In the meantime I hope that your journey through this life is one in which you feel supported and brings you blessings.

Rachel Bussey
Team Vicar




EQUILIBRIUM
HEALTH · BEAUTY · HOLISTIC

**CLINIC FOR NATURAL
HEALTH AND WELL-BEING**

equilibriumclinic.co.uk | 01672 851212
Woodborough SN9 5PF
(opposite Woodborough Garden
Centre, free parking)

Advertising

ENGLISH COUNTRY GARDENS

Garden & lawn maintenance, hedge and tree work, fences, driveways & weed control
Garden waste removed.

Qualified, fully insured and licensed, 23 years experience

WE SUPPLY

Mushroom compost, manure, Pro Grow, woodchips, gravel, stone & scalplings

Loads of logs by size: £75, £135, 180

All seasoned & dry native species.

Can stack

Bags of kindling: £4.50 or 5 bags for £20

Call or text Nick on 07835299247

Free Delivery



Coombe Electrics

Repairs, alterations. New consumer units. Condition reports for landlords and insurance purposes. Fault finding, etc.

Reliable and professional service. No call-out charges for local area. All work fully certified and in accordance with wiring and building regulations.

Call Steve on 07508 621120

or 01980 670345, or email:

steve@becker.globalnet.co.uk



Avon Security

MASTER LOCKSMITHS

Engraving Service Now Available

- > Brass
- > Plastics
- > Aluminium
- > Glass
- > Trophies
- > Gifts

Free Advice & Quotations On Securing Your Property & Belongings

- Key Cutting
- Locks Supplied & Fitted
- Access Control
- Safes
- PVCu Locks
- Master Key Systems
- Lock Repairs
- Door Furniture & Ironmongery
- Transponder Car Keys
- Keys To Code
- Watch Batteries & Straps
- Emergency Call Out Service



01980 626000

21, Salisbury Street, Amesbury, Wiltshire, SP4 7AW
www.avonsecurity.net



Red Lion East Chisenbury



Michelin starred at food
at a friendly village price



Winner of Best Sunday Roast Wiltshire Life 2015

Book or pop in for our lunch time set menu Monday to Friday

2 Courses for £18 or 3 for £24

Also available every weekday lunchtime

Sandwiches, bar snacks & pub grub for under £10

www.redlionfreehouse.com 01980 671124

 **Dog Board UK** 
CARE YOU CAN TRUST

DOG WALKING * HOME VISITS * DAY CARE * DOGGY HOLIDAYS

DOGGY DAY CARE - dog(s) stay with one our dedicated Carer's in their own home for the day, while you at work/or out for the day.

HOME DOG BOARDING - dog(s) have a Doggy Holiday in one of our Carer's homes while you are away for the weekend or on holiday.

DOG WALKING/HOME VISITS - dog(s) are visited in their own home and walked by one of our Carer's.

We are a dedicated professional team of Dog Carers in Wiltshire and we provide an unrivalled service to our customers and most especially their dogs.

t: 01380 829586 m: 07780 242724 e: sarah@dog-board.uk
Visit our website www.dogboarduk.wix.com/wiltshire
for full details of our services, prices, current customer reviews and to "meet the team".

**Wags
2
Whiskers**
Pet Care Services
Putting All Your Pet's Needs

DOG WALKING **HOME SITTING**
PET TAXI **PET SITTING**

1st
FULLY INSURED **FRIENDLY RELIABLE SERVICE**

ALL DAY ADVENTURE

Tel: 01980 670261 **Mob: 07969 284913**

Email: wags2whiskers@live.co.uk

GRAHAM BUCKLAND SERVICES

General building maintenance: plumbing, Carpentry, glazing, brickwork, etc Free quotes and reasonable rates

*'Man with a Van' hire.
Removals and House Clearance
Undertaken
Tel: 01980 670870
or 07831 889 666*

ELSTON VETERINARY CLINIC

*ELSTON LANE, SHREWTON
Dr. Enid Frantilla, DVM MRCVS
Small Animal Medicine and Surgery
Providing high quality pet healthcare
and a caring, friendly professional service
HELPING YOU TO HELP YOUR PETS!!
Consultations by appointment, Mon-Sat
For appointments or enquiries, and
24 HOUR EMERGENCY SERVICE
01980 621999*

Southern Chimney Services

**CHIMNEY SWEEPING & SURVEYS
POTS&COWLS FITTED
FLUE LINER INSTALLATIONS
BURNER INSTALLATION
FOR RATES &APPOINTMENTS
CALL PETE ON 07432 899715
01672 811650**

**www.southernchimneyservices.co.uk
southernchimneyservices@gmail.com**

TIM BUCKLAND BOILER MAINTENANCE

FOR SERVICE AND BREAKDOWNS

*Friendly and efficient service
Wide stock of boiler spares in stock*

VERY COMPETITIVE PRICES

Also AGAs and RAYBURNS serviced

Tel: 01980 625846

KD WORSDELL

**Carpentry & Joinery
Building Works & Maintenance
Bathrooms and Kitchens**

**Please Call
01980 630545
Or
07759 586162**

*G. B. Chamberlain
Flooring Specialist
Specialising in Ceramic
Floors and Walls*

*Tel: 07971 182752
24 hour answer service*

**Sarah Faber
Your local contact for**



Rose Petals



Your Local Interflora Florist


**47 Estcourt Road
Salisbury, Wiltshire, SP1 3AS
Tel: 01722 321840
Web: www.rosepetalssalisbury.co.uk
Email: info@rosepetalssalisbury.co.uk**

OIL FIRED BOILERS

**For prompt reliable –
SERVICING
REPAIRS
COMMISSIONING**

Call Tim Walsh


**Tel. 01980 652803
Mobile 07919603884**



Plumbing, Heating, Electrical & Renewable Energy

Solar Thermal & PV, Air & Ground Source Heat Pumps, Ventilation, Boiler Replacements. Domestic, Commercial & Industrial Contractors. Family Business Established 1970.

Free Estimates and Advice:
Tel: 01980 670667 Fax: 01980 670811
www.rgvengineering.co.uk info@rgvengineering.co.uk



**MODERN & TRADITIONALLY
DESIGNED MEMORIALS**

M J SLY
Monumental Stonemason

*New Memorials, Additional Inscriptions
Restorations, Free Home Visits
Free Brochure*

Marlborough (01672) 516797
Email: martin@mjsly.co.uk
Website: www.mjsly.co.uk

*Workshop & Showroom at Pelham Court,
London Road,
Marlborough, Wiltshire*

MOBILE HAIRDRESSER

Ring Donna
on

07711 579403

**SEAN DEVINE
PAINTER & DECORATOR**




**Free estimates. Fully insured.
For local professional service call:
01980 630864 or 07870 454884**

“PAMCAKES”

Bespoke Cakes for your special occasions (any age group). Traditional and 3D, cupcakes and some Wedding Cakes. See my FB page “Netheravon’s Pamcakes” for more details & website pamcakesofnetheravon.co.uk pamcakes@write.me or call 07919656141

Kate Robinson Flowers

For all occasions including
**Funerals, Weddings,
Anniversaries**

For something special and personal at competitive rates call Kate on 07906 580361 kcrobinson@hotmail.co.uk

PEST CONTROL SERVICE

*RABBITS, RATS, MOLES
WASPS, SQUIRRELS
BIRD PROOFING*

CALL NIGEL

**01980 670804
07854 828904**

THE MOTOR GARAGE LTD

Max Rowley

Telephone: 01980 670348
Mobile: 07970 785284

www.themotorgarage.co.uk
max@themotorgarage.co.uk

The Motor Garage
Netheravon, Salisbury, Wiltshire, SP4 9RH

Tina's Hairdressers

High Street, Netheravon
Unisex Salon
Tel: 01980 670628

Tue 9-5 Wed 9-2 Thurs 1-7
Fri 9-6 Sat 8.45-2

TIPZ & TOEZ
nails now available
Appointments not always necessary

Phil Wakeford GARDENING & LANDSCAPING



Landscape Construction · Pruning Fruit Trees & Roses
Garden Maintenance & Advice · Lawn Mowing
25 Years Experience · Flower Meadows

01980 670718 07194412396

Bits & Pieces (Durrington Ltd)

BUILDING, GARDENING & DIY

PETS, PANELS, AGGREGATE

37 - 39 Bulford Road, Durrington Wiltshire SP4 8DL
Tel: 01980 655552 Fax: 01980 652351

Proprietors: P & M Conn

GDB TECHNICAL SERVICES LIMITED Computer/IT support

Small business and Home users
Networking issues/installations
PC Problems
Tuition
General IT advice/help
Upgrades/Data Recovery
Service Support Options

Call 01980 623052 or visit
www.gdbts.com to see if we can help.

M NASH & P WILKINS

ALL LANDSCAPING WORK UNDERTAKEN
FENCING*PATIOS*PATHS*PONDS*
BRICKWORK
HEDGE CUTTING*GARDEN CLEARANCE
GRASS CUTTING

Tel: MIKE 01380 840767
Mobile: 07977 950654
Tel: PAUL 01380 840763
Mobile: 07970 557002



We stock a large range of animal feeds including mixed corn, layer-pellets, dog food and various horse feeds, horse bedding and wormers plus the complete Rutland electric fencing system

We also supply Briswim swimming pool chemicals at an unbeatable price
FREE HOME DELIVERY!

Contact: Justin Young, A.M.T.R.A., SQP (Regional Manger)

Hope and Faith Wedding Services

Planning & Co-ordination of your Wedding or Event
Venue Decoration
Hire Services
Contact us for details of what we can do for you

www.hopeandfaithweddings.co.uk
enquiries@hopeandfaithweddings.co.uk
Tel: 07835773714

G. B. Chamberlain
Flooring Specialist
Specialising in Ceramic Floors and Walls

Tel: 07971 182752
24 hour answer service

VILLAGE COMMITTEES

PARISH COUNCIL

Chairman	Richard Roberts	671055
Vice Chairman	Nigel Murray	671684
Parish Clerk	Elizabeth Harrison	670034
Councillors	Michael Fay	670553
	Jane Young (Parish Hall)	670532
	Anthony D'Arcy Irvine (Rep Tidwort & Pewsey Area Boards/Village Hall)	670501
	David Harbottle (Roads and Highways)	670932
	Richard Petitt (Planning Committee/ Parochial Church Council)	670510
	Gareth Holden (PR/Press Officer)	671195
	Bruce Waight	670113
	Pat Holdway	671792
	Keron Taylor	07962 266250

NETHERAVON SCHOOL

Chairman of Governors	Fanny Middleton
Head Teacher	Hayley Humphris

NEWSLETTER

Chairman	Tanya Becker
Vice Chairman	Linda Mundy
Secretary	Linda Mundy
Treasurer	Ros Perry
Advertising	Gay Monk
	Jacqui Elkins
	Jane Young
	Ann Houghton
	Clare Burge
	Kriss Mitchell

PAROCHIAL CHURCH COUNCIL

Church Wardens	John Poole Warren
	Henry Middleton
Treasurer	Gill Gould
Secretary	Amanda Murray
Council Members:	John Manser
	Jonathan Walsh
	Judy D'Arcy-Irvine
	Bruce Carter
	Frank Horsford
	Mary Burdick
	Gai Rickett
	Sue de Candole

VILLAGE HALL

Chairman and Booking Officer	Judy D'Arcy-Irvine
Vice Chairman	(670501)
Treasurer	Steve Becker
Secretary	Hannah Tucker
PC Rep	Maggie Maund
Youth Club	A D'Arcy Irvine
Camera Club	Jane Young
Football Club	Ollie Stagg
PCC	Judy D'Arcy-Irvine
Newsletter	Jacqui Elkins
Property Officer	David Spencer
Grounds Officer	Hamish Scott Dalgleish
Gardening Club	Sally Parker
Short Mat Bowls	David Spencer
Red Lion	Ian Fribbins

PARISH HALL

Chairman	Richard Petitt
Treasurer	Bob Taylor
Secretary	Gareth Holden

FOR YOUR DIARY February 2016

1st	Mon	
2nd	Tue	Create, Craft, Learn, Show, The Swan, 10.00 - 12.00/Quiz, The Swan
3rd	Wed	Short Mat Bowls, 7.30pm / Darts Night, The Swan, 8.30pm
4th	Thu	Household Waste / The Hub Café 1st Birthday , 9.30am - 11.30am, The Swan Inn / Circuits, Parish Hall , 7.00pm / Gardening Club, Village Hall, 7.00pm
5th	Fri	Youth Club, 6.00pm,Village Hall
6th	Sat	Enford Cycling, 9.30am, The Swan / Youth Football Session, 10.00pm, Enford Playing Fields
7th	Sun	Holy Communion, 9.00am
8th	Mon	
9th	Tue	Create, Craft, Learn, Show, The Swan, 10.00 - 12.00/Quiz, The Swan
10th	Wed	Short Mat Bowls, 7.30pm / Darts Night, The Swan, 8.30pm
11th	Thu	Black Box, Blue Bin / The Hub Café, 9.30am - 11.30am, The Swan Inn / Circuits, Parish Hall , 7.00pm / Gardening Club, Village Hall, 7.00pm
12th	Fri	Youth Club, 6.00pm,Village Hall
13th	Sat	
14th	Sun	Team Service, Milston, 10.30am
15th	Mon	
16th	Tue	Create, Craft, Learn, Show, The Swan, 10.00 - 12.00/Quiz, The Swan
17th	Wed	Short Mat Bowls, 7.30pm / Darts Night, The Swan, 8.30pm
18th	Thu	Household Waste / The Hub Café, 9.30am - 11.30am, The Swan Inn / Circuits, Parish Hall, 7.00pm
19th	Fri	Youth Club, 6.00pm,Village Hall/ NEWSLETTER DEADLINE
20th	Sat	
21st	Sun	Family Service, 10.30am
22nd	Mon	
23rd	Tue	Create, Craft, Learn, Show, The Swan, 10.00 - 12.00/ Enford Film Club, 7.30pm, Village Hall/ Quiz, The Swan
24th	Wed	Short Mat Bowls, 7.30pm / Darts Night, The Swan, 8.30pm
25th	Thu	Black Box, Blue Bin //The Hub Café, The Swan Inn, 9.30am - 11.30am, / Circuits, Parish Hall, 7.00pm
26th	Fri	Youth Club, 6.00pm,Village Hall/
27th	Sat	Youth Football Session, 10.00pm, Enford Playing Fields/ Fairtrade Fortnight Supper, Village Hall, 7.00pm
28th	Sun	Evensong, 6.00pm
29th	Mon	