

Enford Newsletter

What's Happening In and Around Enford



NOVEMBER 2018



**Remembrance Day Service 9am on
Sunday 11th November**



www.enfordnewsletter.org

CONTENTS

Next Newsletter Deadline NB. Double issue next time	2
Useful Telephone Numbers/ Crime reduction/Cat Café Thank You	3
Team Rector's Musings/Thank you	4
Church Services/Parish News/Parish Hall Management Committee AGM	5
Film Club/Household Recycling Centre/Garden Bin Collections	6
Gardening Club/Bridge & Whist group/ Mobile Library	7
Camera Club	8
Swan Craft/Defibrillator/ Village Hall Bridge & Whist Drive	9
Age UK plea/Victim Support/ Youth Club/Football	10
Hub in the Pub/Schoolreaders plea/ Parish Council Meeting dates	11
Benevolent Fund Lunch/Allotments	12
Enford Church Christmas Fayre	13
Fete plea/SPTA news/ Location of Dog Mess Bins	14
Ladies' Christmas Supper form	15
Parish Council Minutes	16-17
Village Soldiers' Book Presentation/ Cardboard Disposal/	18
Condolences/Prospect Christmas Fair	19
Enford Community Fund/Darts/Quiz/ Results of Public Meeting re Parish Hall/Newsletter thank you	20
War Graffiti Presentation	21
Coffee Morning for Fittleton Church	22
Cancer Support Jumble Sale/ Royal British Legion Quiz/Local MP/ Netheravon Library	23
Advertising	24-29
Village Hall Diary	30
Village Committees	31
November Diary	32
	2

**The next
Newsletter deadline is**

**FRIDAY
16th November 2018**

Emails are preferred but all items for inclusion, whether they are handwritten, typed or via e-mail, **MUST be submitted by the deadline date.**

These articles may be handed in to any Newsletter Committee member.

**Please send e-mails to
enfordnewsletter@gmail.com**

Enford Newsletter Committee reserves the right to reject or omit from publication any material that is considered by majority of Committee Members to be detrimental to any person or which is not in the best interest of the community as a whole.

All letters and articles must be signed, but the Committee will withhold the name of the writer if this is requested when submitted.



**Next edition will
cover both
December and
January.**

**All submissions for both
months need to be with
us by**

21st November.

**Also, if a regular event
you are running will not
be taking place in
either or both months,
please let us know.**

USEFUL NUMBERS

EMERGENCY SERVICES

DOCTORS

630221	UPAVON	The Surgery, Fairfield
652378	DURRINGTON	The Surgery
652221	DURRINGTON	Cross Plains Surgery

HOSPITAL

01722 336262	SALISBURY DISTRICT HOSPITAL
--------------	-----------------------------

POLICE

101	POLICE
-----	--------



OTHERS

0800 111 999	GAS
0800 80 70 60	ENVIRONMENTAL AGENCY
0345 988 1188	FLOOD LINE
0800 072 72 82	ELECTRICITY
01980 674700	PLAINWATCH

DURRINGTON LINK

01980 594857	LINK (Durrington & District)
--------------	------------------------------

SCHOOLS

01980 670339	ALL SAINTS C of E PRIMARY, Netheravon
01980 630360	RUSHALL C of E PRIMARY, Rushall
01980 670268	ST MICHAEL'S C of E PRIMARY Figcheldean
01980 652467	AVON VALLEY COLLEGE SECONDARY, Durrington
01672 565000	PEWSEY VALE SECONDARY SCHOOL, Pewsey

WHAT CAN YOU DO TO REDUCE CRIME ON SALISBURY PLAIN?

If any crime is taking place call 999 and do not under any circumstances challenge the offenders.

Report suspicious activity to **PLAINWATCH (01980 674700)** or **PLAINWATCH@landmarc.mod.uk**.

The more information received the better, e.g. time, place, vehicle registration, description of individuals and vehicles.

Health and Safety reminder for *all* Military Training Areas and Ranges:

Do not touch or tamper with Military debris.

Wash your hands before you eat.

Clean your footwear before you enter your car or home.



The Cat Café

I wanted to say a big "Thank you" to my good friends who have supported my Cat Café over the past year, resulting in donations amounting to £500 which we have given to the Wiltshire Air Ambulance.

Doreen Fay

A word from Philip Bromiley our Team Rector



Remembering again

Some trainee paratroopers were doing their first drop from 800ft from a static Barrage balloon. Standing on the edge ready to drop, a recruit was heard to ask the Training Officer, "If the parachute doesn't open, how long will it take me to hit the ground from 800 ft?" The reply came, "Mmm, let me see, you'll be about halfway through The Lord's Prayer".

There's a saying that you never meet an atheist on the battlefield. As we contemplate again the risks and sacrifices of military service, particularly the 100th anniversary of the original Armistice, so we find ourselves turning to prayer and seeking God's presence in the painful memories of military campaigns. A month ago, I was in Jerusalem. The State of Israel was formed after the horrors of the Second World War. The people of the Jews deserved a place to call home, a place set aside from the antisemitism of Europe. Part of my visit was to the newly relocated Holocaust Museum, Yad Vashem. With video projected testimony and state of the art design, the museum recounts the history of prejudice against the Jewish people (including antisemitism in our own Church history), culminating in the fascism of Germany in 1930s and 40s.

One video showed a man describing how dozens of men and boys were shot at the edge of a mass grave that they had dug for themselves. The man was a young boy at the time. He was shot, but survived by pretending to be dead as he lay there with bodies falling on top of him.

Tributes were made to the "Righteous amongst the Nations", including many Christians, who were strong enough to protect the Jewish people from the evil that oppressed them. The experience of Yad Vashem was deeply sobering and demonstrated the reality of evil. Imagine the possible consequences of evil, had fascism not been defeated in the '40s? Today, the evil being confronted in our generation is a religious fascism of terror, seeking to hurt those who might oppose it ideologically. Each one of us has the propensity to collude with evil. How many millions of decent people have been swept along by fascist ideals? Pastor Martin Niemoller famously wrote: "They came first for the Communists, and I didn't speak up because I wasn't a Communist; then they came for the trade unionists, and I didn't speak up because I wasn't a trade unionist; then they came for the Jews, and I didn't speak up because I wasn't a Jew; then . . . they came for me . . . and by that time there was no one left to speak up".

Let's stand together and remember the importance of resisting evil and hatred.
Hold on to all that is good and of God.

Revd Philip Bromiley



I would like to thank the kind supports of Enford Jumble Sale for the generous donation to help towards my transport costs for my Chemo treatment.

**Many Thanks
Pat Robinson**

ALL SAINTS CHURCH, ENFORD Services



November

4th	Team Service, Enford 10:30am
11th	REMEMBRANCE DAY - 9am Outdoor Service at the Lychgate.
18th	Breakfast Church, 9.30am
25th	Evensong, 6pm

December

2nd	Holy Communion, 9.30am
9th	Team Service, Durrington 10:30am
16th	Breakfast Church, Carol and Crib Service 9.30am
23rd	No Service
24th	Christmas Eve Midnight Service (subject to staffing) 11:30pm
25th	Christmas Day Holy Communion 9:30am
30th	Team Service, Fittleton 10:30am

More information, help and details of other Avon Valley church services can be found on the website at www.avonriverteam.org.uk

PARISH NEWS

HARVEST FESTIVAL

Over 50 people joined the Church Summer BBQ on 18 August - a great success and we hope to make this an annual event. Thanks to Anastasia and Tom for masterminding the whole occasion, to Margaret Webb - ace cooker of the burgers - and to John and Tessa Manser for the loan of the splendid Indian tent.

THE PARISH HALL MANAGEMENT COMMITTEE

Will be holding their

Annual General Meeting

On Monday, 26th November at 7.30pm

In Enford Church.

If anyone would like to attend you are very welcome

Services in the 7 churches in the Avon River Team and Minutes of PCC meetings can be found at: www.avonriverteam.org.uk.



ENFORD VILLAGE HALL FILM CLUB



Tuesday November 27th "The Happy Prince"



The untold story of the last days in the tragic times of Oscar Wilde, as he lies on his deathbed and with detachment and humour, observes his own failure with ironic distance and considers the difficulties that beset his life .

Tickets £5.00 each

To book tickets and for more information contact 01980 670501

or e-mail: enfordvillagehall@btinternet.com

Doors open 7.00pm Film Starts at 7.30 pm
Drinks available from the Bar

Autumn/Winter Season

Still to come we hope to screen "Goodbye Christopher Robin" and "Mama Mia Here We Go Again" and possible also, another WW1 film in January, "Journey's End".

If you would like to be included in our e-mail contact list for all Enford Village Hall events, including the film nights, please let us know.

Lifts can be arranged if you let us know in advance.

Garden Bin Collection Dates

Wiltshire Council now allocate collection dates to specific addresses. To find your next collection day, please visit the Wiltshire Council website at <http://www.wiltshire.gov.uk/rubbish-collection-day> or call the council on 0300 456 0102

Wiltshire Council Household Recycling Centre (HRC) Information

The website is <http://www.wiltshire.gov.uk/household-recycling-centres> for all you need to know about locations, opening hours (which are seasonal) and what you can take to each (sites vary).



ENFORD GARDENING CLUB



Thursday 15th November 2018 7.00 pm

Sara Willman

Christmas Wreath Demonstration

Sara will show us how to make a Christmas Wreath, and has kindly agreed to donate the finished product as a raffle prize. Please bring your friends and relations to what will be a fun and interesting evening.

Meeting will be at Enford Village Hall, SN9 6DD.

Cost £4.00

Plants for sale/coffee/tea/raffle/plants.

All welcome.

Further details from Fanny Middleton, 01980 671645,
fannysurtees@btinternet.com

Please ask if you need a lift.



CONTRACT BRIDGE/WHIST GROUP THE PHOENIX HALL, NETHERAVON

EVERY MONDAY AFTERNOON 2-4pm.

£2 PER SESSION. TEA/COFFEE INCLUDED.

NO JOINING FEE. CAKES ACCEPTED!

WE'RE HERE FOR BEGINNERS TOO. TUITION BOOKS FOR
 SALE @£2.50.



EXPERIENCED PLAYERS WELCOME TO HELP TEACH BRIDGE TO BEGINNERS.
 THIS IS A FUN GROUP WHO PLAY FOR ENJOYMENT.

EXPERIENCED PLAYERS ARE ALSO WELCOME TO BRING A 4SOME (AND A TABLE) IF YOU
 HAVE FRIENDS WHO PLAY REGULARLY.



Discover your mobile library
www.wiltshire.gov.uk



- Friday 23 November, 2018
- Friday 21 December, 2018
- Friday 18 January, 2019
- Friday 15 February, 2019
- Friday 15 March, 2019

WATER LANE, ENFORD FROM 15:40PM -16:10PM



Enford Camera Club



are pleased to announce that
David Kjaer*
will be presenting a photographic talk on



Wiltshire Wildlife

Thursday 1st November 2018
8.00pm to 9.30 pm
at Enford Village Hall, SN9 6DD
Tickets £3
including free refreshments.

**Enford Camera Club also have the 2019 Calendar on sale for only
£5 each.**

Please email enfordcameraclub@btinternet.com to reserve them.

To reserve a seat, please e-mail enfordcameraclub@btinternet.com

*David Kjaer is a Wiltshire-based photographer best known for his photography with
the Great Bustard Group.

He has been photographing wildlife for over 36 years and turned professional following
a 30 year career as a Police Officer in the Wiltshire Constabulary.

His work has been published many times around the world with many `covers` to his
credit. His photographs are
can see many examples

always stunning and you



BRIDGE DRIVE WEDNESDAY 14TH NOVEMBER

Enford Village Hall

2.00 p.m. to 5.00 p.m.

£15 per person £60 per table

Delicious Cakes and Tea

All Bridge players, and Whist players, are very welcome.

Please put a table together or, if you would like to come on your own,
we will arrange a table for you

If you would like a lift, please let us know

Contact 01980 670501 or enfordvillagehall@btinternet.com



Swan Craft



Do you enjoy making and creating?

If you enjoy hobbycraft, be it with wool, fabric, beads, felt, paper etc.
then please come and join us at The Swan on Tuesday mornings
10.00am - 12.00noon

Any craft medium you may be interested in will be very welcome.
Feel free to bring along any samples of your creations to show and
share (or just yourself).

Anybody who may be slightly interested is more than welcome!

For more information contact Jacki Brightman—01980 671598

ENFORD DEFIBRILLATOR

The defibrillator is in a yellow box on the wall of

Hill House, 9 Longstreet, SN9 6DD

Grid Ref SU142515.

It is located in the centre of Enford 25m north of The Swan next to the
parish notice boards.

If you think you need to use the defibrillator call 999.

The Emergency Service will give you the code to get into the cabinet.

YOU CAN READ MORE ABOUT IT AT WWW.ENFORDNEWSLETTER.ORG WHERE YOU
WILL ALSO FIND A LINK TO A SHORT VIDEO SHOWING YOU HOW TO USE IT.



Do you have some time to spare to support local older people?

Information about all our roles can be found:

- ⇒ on our website www.ageukwiltshire.org.uk or
- ⇒ by calling our office on 01380 727767
- ⇒ or emailing us at volunteering@ageukwiltshire.org.uk

Whatever your reason for volunteering, we'd be delighted to hear from you.

VS

VICTIM SUPPORT Have you been affected by crime?

Victim Support offers free and confidential help and support to anyone affected by any crime.

The charity is independent of the police and you can access services whether or not the crime has been reported and regardless of when it happened.

For support, contact: Wiltshire Office: **01380 738878**

Freephone: **0808 281 0113** Email: wiltshire@victimsupport.org.uk

As an independent charity, we work for a world where people affected by crime and traumatic incident get the help they need and the respect they deserve. To find out how you can help us help more people visit victimsupport.org.uk/get-involved

Enford & Avon Valley Youth Club

Join us every Friday 6pm-8pm Phoenix Hall Netheravon

FUN FOOTBALL SESSIONS (Age 5yrs to 11yrs)



EVERY SATURDAY MORNING
(during school term time)

AT ENFORD VILLAGE HALL

10am until 11 am £2.50 a session



For the dates for the next coaching sessions or further information please contact Steve Todd on 01980 670934

Any child who wants to take part should be aged between 5 and 11 years old and they should bring their own shin pads, suitable footwear and a drink.

FA Level 1 and 2 Coaches, CRB checked



Schoolreaders

improving literacy • increasing life chances

MORE VOLUNTEERS NEEDED IN WILTSHIRE TO LISTEN TO CHILDREN READ IN PRIMARY SCHOOLS

Can you spare an hour or two a week to listen to children read in a primary school?

The reading charity Schoolreaders is looking for volunteers to carry out this important role.

Our volunteers find the scheme incredibly rewarding, knowing that a few hours helping a child learn to read each week can have such a great impact on their life chances.

**Please visit the website
www.schoolreaders.org to
join or call 01234 924111 for
further information.**

Parish Council Meeting Dates

All meetings are on a Tuesday at the Village Hall and start at 7:30pm unless otherwise stated.

20th November 2018

11th December 2018

22nd January 2019

12th March 2019

9th April 2019

14th May 2019

PC AGM 6:30pm

Annual Parish Meeting 7:30pm

11th June 2019

9th July 2019

10th September 2019

8th October 2019

12th November 2019

3rd December 2019

Precept only meeting

10th December 2019



In Aid of Army Benevolent Fund

**REMEMBRANCE SUNDAY
SUNDAY 11th NOVEMBER 2018**

**The Annual Curry Lunch is again being held in
ENFORD VILLAGE HALL**

12.00 Noon

**NB An alternative main course and/or vegetarian option can be arranged instead
of Curry**

**Do come and support the ABF for the 100th Anniversary since the end of the
First World War**

For tickets please contact:

Tel: 01980 671307 or 01980 670501

Email: enfordvillagehall@btinternet.com or rhinob@tiscali.co.uk

Cheques to be made out to ABF The Soldiers' Charity



**Booking is almost complete and will close on 2nd November
Book NOW to avoid disappointment!**



Tickets £20 per person

**Catering provided by Emma Harrison
Bar available**

**Please let us know any dietary requirements and / or
if an alternative main course is required**

**Cancellations please by Friday 2nd November when numbers will be confirmed to
the Caterer**

ALLOTMENTS

Some 6 years ago a Parish Plan (questionnaire) looking at the village requirements/requests/wishes for the future was sent to every house in the village. The responses from this showed that many people were interested in having an Allotment. In order assist the Parish Council in planning and bringing this up to date, could anyone currently interested in renting an Allotment site please contact the Clerk to register their interest. The Parish Council wish to ascertain the level of interest before making a commitment of Parish funds.

Elizabeth Harrison, Clerk to Enford Parish Council



Email: eabh@btinternet.com or tel: 01980 670034



ENFORD CHURCH CHRISTMAS FAYRE

Saturday November 17th
2.00 pm – 4:30pm
in Enford Church

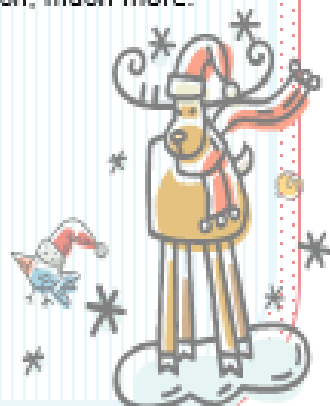
DELICIOUS AFTERNOON TEAS

Join Father Christmas and enjoy the
afternoon:

Cakes, Bottle Tombola, Jewellery, Christmas Gifts,
Ceramics, Candles, Books, Christmas Decorations, |
Raffle, Cards, Home Produce and much, much more.

Free Entry & Parking

All proceeds from the Christmas
Fayre support the maintenance of
our beautiful church and the work
of the church in the community



SUMMER FETE AT ENFORD

There was **NO FETE** at Enford this year, did you miss it?

Would you like to see the fete reinstated?

If your answer is YES to these questions

CAN YOU HELP MAKE IT HAPPEN?

The Enford, Chisenbury and Coombe Fete Committee urgently needs enthusiastic new members, without which the fete cannot take place. If you would like to be part of getting this fun community event off the ground, **please get in touch.**

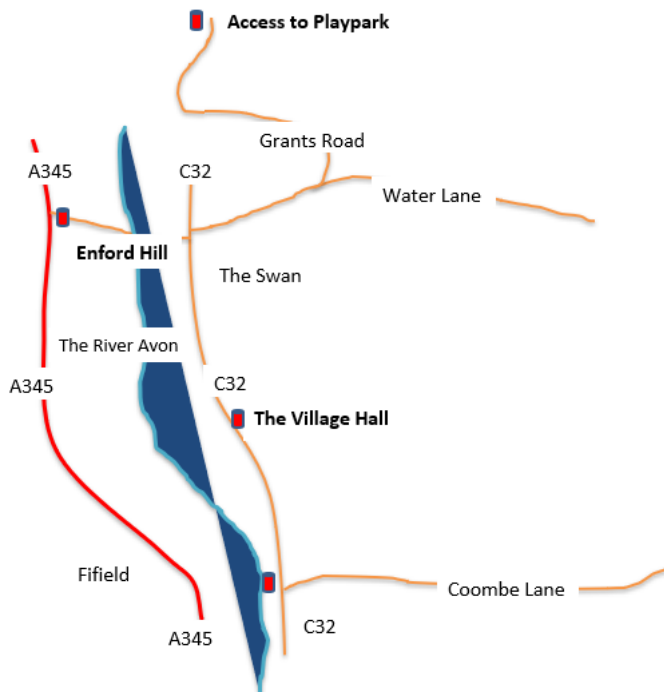
Email: amanda.farrow@chisenbury.co.uk or telephone 671343

SPTA NEWS

For Salisbury Plain Training Area News, giving times of live firing, current and upcoming exercises go to

<https://www.gov.uk/government/publications/salisbury-plain-training-area-spta-newsletter>

ENFORD VILLAGE – DOG MESS BINS



This image represents the bins available for bagged dog mess in the village. They have been paid for by the Parish Council who also pay for their regular emptying. This is to try keep the kerbs, walks and paths etc. around the village as clean and pleasant as possible for everyone to enjoy.

This map is for representational purposes only and not to scale.

Please clean up after your dog and use these bins provided.

Thank you.

The Enford, Chisenbury and Coombe ****Ladies' Christmas Supper****

The Swan Inn, Enford,

Wednesday 12th December at 7.00pm for 7.30pm.

The cost for the evening is **£19 for 2 courses** or **£25 for 3 courses**. A glass of red or white wine or non- alcoholic beverage and tea or coffee will be included in both menu prices.

Pete and Emma are very kindly providing a complimentary glass of mulled wine or elderflower cordial on arrival.

We warmly invite you to complete the form below and circle your choice of either 2 or 3 courses, to reserve a place. Please return this form no later than Friday 30th November, along with full payment by cash or cheque (payable to "Dickle Limited") to: Beren Cliffe-Roberts, Kimble House, Longstreet, Enford or Geraldine Symonds, Swancote, Longstreet, Enford. N.B. Please do not return your completed booking form to The Swan. Full refunds given if a cancellation is made before 5th December.

Name:.....

Address:.....

Telephone.....Email.....

Starters: a choice of (please circle your selection)

- Duck and Plum Pate
- Bubble & Squeak with poached egg and hollandaise
- Stilton Rarebit with walnut salad
- Sweet Potato and vine tomato soup
- Scallops with spiced cranberry puree

Main Courses: a choice of (please circle your selection)

- Traditional turkey
- Pork Noix; topside stuffed with pork meat, bacon and veal with sherry sauce
- Whisky and marmalade gammon

(The above choices will be served with all the traditional Christmas trimmings – chipolatas, sausage-meat stuffing ball, roast potatoes, sprouts, carrots, red cabbage and cauliflower cheese)

- Root veg, apricot and cheese nut roast – served with traditional Christmas trimmings
- Fillet of Red Sea Bream, lemon & burnt butter sauce, crushed potatoes and vegetables.

Puddings: a choice of (please circle your selection)

- Christmas Pudding with custard or rum butter
- Apple Strudel with cinnamon cream
- Cheeseboard: a selection of 3 English cheeses with biscuits and panforte
- Clementine Crème Brulee & gingerbread biscuits
- Christmas profiteroles topped with hazelnuts, pistachios and more!

Please let us know if you have any dietary requirements or restrictions.

Any questions, please do not hesitate to call Beren on 01980 671676 or

Geraldine on 01980 679401

ENFORD PARISH COUNCIL (For future meetings see p11) **Abridged Draft Minutes of the meeting of 9th October 2018**

18/105 Police Matters and Neighbourhood Watch

The latest Community newsletter issue by the Police was covered in the September meeting. There has not yet been an issue for October. Cllr Waight said the hare coursers are still out in force and Cllr Hiskett said if phoning through information to Plainwatch or 101 refer to Project Artemis which covers poaching as well as hare coursing.

18/106 MOD/Army Matters

WO2 Jeff Payne apologised for his previous absences and read out the following list of incidents recorded from 1st to 30th September on the Plain.

Near misses: 35 – (vehicles x28, on foot x5, Cycles x1, Air x 1)

Fly tipping: 21 in total

Environmental: 4 – all of which were fires

Criminal Damage: 11 in total ranging from theft of range flags, damage to fences and farmers' trailers being set on fire.

Complaints: 18 – All were concerning military training involving vehicles being out of bounds

Live Stock: 6 – all of which were regarding cattle that had got loose.

Jeff went on to say that there are now 2 MOD Police, he will forward their telephone number when he gets it. He requested that calls continue to go to Plainwatch as the MOD Police could be anywhere in the county. They currently have vehicles and their radios are arriving shortly. There will be 6 in total and for the time being they are not covering nightshifts until there are more of them.

18/107 Unitary Council Matters

i WCllr Ian Blair-Pilling reported that as of 9th October Wiltshire Council had officially declared that Everleigh Household Recycling Centre would be closed. He wanted to point out that Public Consultations are not the same as Referenda, however he does feel that Wiltshire Council did not handle this situation very well. Cllr Roberts raised the point of a noticeable increase in fly-tipping and WCllr Blair-Pilling did not feel this was a true representation and said that Wiltshire figures on this were actually quite low. Cllr Roberts asked whether there would be extra days open at other recycling centres to compensate, WCllr Blair-Pilling said he did not know when the Council would be re-scheduling any dates or times. Wiltshire apparently provides better recycling facilities than the recommend standard requirements of a Council. Cllr Waight suggested that the site might prove enticing to travellers/gypsies but WCllr Blair-Pilling thought this would not be the case as there were no immediate facilities available – schools, buses etc.

ii The Electoral Review. WCllr Blair-Pilling confirmed that Enford, Figchellean, Milston and Larkhill Garrison would all be 'going' to the Amesbury Area Board.

iii Byways Workshop. Nick Cowan is Wiltshire Council's only representative for Public Rights of Way (PRoWs). He is looking to go to the rural parishes in Wiltshire and run workshops on possibilities and practices for local areas to maintain their PRoWs as Wiltshire can no longer do this – there is neither budget nor staff. He will run a workshop probably in the Collingbournes and was asking if Enford would like to join in. He will let us know when this event is being organised.

18/111 Matters Arising

i Boundary Dispute. Cllr Roberts referred to an email he had circulated to all Cllrs on 25th September from the PC's solicitors, Trethowans, regarding a communication they had received from Medina Cottage's solicitors about the boundary dispute. It would appear from this communication that Medina Cottage felt there were outstanding issues to be resolved. Following some discussion in which there was general concurrence that the matter was closed from the PC's perspective, Cllr Harbottle offered to meet with Maj and Mrs D'Arcy-Irvine to try to reconcile their concerns.

ii WWI commemorative Poppies and tree. The Clerk reported that the poppies had been received but as yet the printed names were still unavailable. Once all components are received, Cllrs Waight, Cliffe-Roberts, Hiskett, Harbottle, Young and Roberts will make up the poppies and decide where they should be displayed. On the matter of a commemorative tree, a choice of Silver Birch, Cherry or Rowan had been offered. Cllr Young said the trees were in fact only whips and after a brief discussion it was decided that Enford Parish Council would plant a Beech Tree, circa 6 foot tall instead, with a small protective railing (courtesy of Cllr Waight) and a commemorative plaque. Cllr Young suggested that as a project to add extra names to the Lychgate (the village's war memorial) appear to have come to a halt, perhaps the funding from that could go towards the cost of the tree and engraved plaque. Cllr Harbottle offered to find such a tree when he was next at Highclere.

iii 'Village Soldiers' book. Cllr Young has offered to be in charge of sales of this for the Curry Lunch. WCLr Blair Pilling has also offered to come and explain the whole project to the attendees. It is now more likely that the books won't be printed in time and therefore it will be a proof copy with the numbers required being sent through after the launch. Martin Webb is unable to attend and a 3 minute video could be shown on a laptop using a USB. It was suggested that Clive, who runs the Film Nights, should be approached for his technical expertise.

iv Remembrance Service and Wreath. Henry Middleton of the PCC has asked Cllr Roberts (as Chairman of the Parish Council) to lay a wreath during the service. Cllr Roberts will organise the purchase of a wreath from the British Legion.

18/114 Parish Plan – Youth Funding

It was noted that Cllr D'Arcy-Irvine was concerned that monies raised by children and members of the community for the upgraded play park project should be ring fenced for that purpose. Cllr Roberts has taken on the Playpark extension, renovation and Allotments which formed the major requests in the Parish Plan. He has tried to speak with Jenny Rowe of Wiltshire Council who is head of the Estates dept. Rather than signing the offered 125 year Lease, she had suggested we should wait and try to get the land gifted freehold as was the plan earlier this year. Cllr Roberts asked if we still wanted to go ahead with Allotments. The Clerk reported that no one had responded to the notice in the Newsletter asking those interested to register their names. It was agreed that Cllr Roberts should proceed with getting the previously offered freehold, gifted to the Parish. Playpark. The annual report has not yet been received although the inspection was carried out in September. Cllr Roberts reported that the basketball hoop was hanging down and suggested this should be removed for safety reasons. The Clerk will look into buying a new hoop and backboard. It was agreed the priority was to get the site, prepare the ground and re-fence the whole area in readiness for potential new equipment.

18/115 The Parish Hall

Cllr Cliffe-Roberts reported that Public meeting was well attended – 36 people with one new idea put forward. The whole event and ideas will be discussed at the next PHMC meeting on Monday 15th October. The First Registration application for the Parish Hall site is now with the Land Registry. This will take some time. Cllr Cliffe-Roberts is making progress with the Heritage Statement for Wiltshire Council.

18/119 Any Other Business

-Cllr Roberts mentioned to the Council that ex-Councillor Nigel Murray's funeral was being held on Thursday 11th October at 2.30pm in Enford Parish Church.

-Cllr Exley mentioned that Wiltshire Council are again organising free events for families over half term with Enford Village Hall as a venue. She suggested the word should be spread so as to gain maximum attendance otherwise these events would not continue to be available.

-Cllr Young said the Village Soldiers book launch was being held in Netheravon on Saturday 10th November in the Phoenix Hall at 6.30pm. She suggested some people from Enford might like to attend.

-Cllr Cliffe-Roberts said several people had mentioned a Village Christmas Tree. A brief discussion took place on where it might be, the best location so far being by the bus stop at the bottom of Enford Hill. Whether Planning Permission would be needed should be looked into and also the question of a power source for any lights. It was decided to add this to the Agenda for 20th November for further discussion.

Full minutes are available on the website and the Village Noticeboards

Commemoration of the Centenary of the Great War Armistice

“Village Soldiers”

Each year at our Remembrance service, you have heard the names of those who left to fight, but never returned to our villages. Many names are familiar as they continue down the generations. Wayne Price, who lives in Netheravon, has spent years researching and writing his account of all those young men who left from our parishes of Netheravon, Fittleton and Enford as well as the soldiers from the Dominions who came to fight but died here and remain with us. Enford PC as well as Netheravon and Fittleton have sponsored the publication of his book titled “Village Soldiers”.

His book also sets the scene as our villages changed 100 years ago from quiet rural estates and farms to being at the centre of the Nation’s land and air preparations. The Netheravon, Fittleton and Haxton Jubilee Committee have created a map-based website using modern and historic maps and photographs drawing on Wayne’s accounts to reflect the changes. In the coming weeks the children of All Saints’ Primary School will be adding their contributions.

Wayne’s book ‘Village Soldiers’ and the website will be launched on the 10th of November at 6:30pm for a reception in Netheravon’s Phoenix Hall. This event is open to everyone from our community so please put the date in your diary. Further details will be in the next Newsletter and on Facebook.

In the coming weeks Enford Parish Council will be placing large poppies around the centre of the village and as a lasting commemoration will be planting a tree, with plaque, in the Enford Jubilee Garden.

Remembrance Sunday will start with the Act of Remembrance service and wreath laying at our Memorial Lychgate, All Saints Church Enford. Afterwards at the Annual Curry Lunch in Enford Village Hall, Wayne’s book will be introduced with a short video clip and will be available to purchase at £25 a copy. We only have a small allocation, so initial sales will be limited to one copy per person. Interest for any further orders can be registered with Cllr. Jane Young 01980 670532

ENFORD PARISH COUNCIL



CARDBOARD DISPOSAL

Due to the current constraints at the
Everleigh Recycling Centre please do not take cardboard there.

If you have large pieces of cardboard for disposal that will not fit in your blue topped recycling bin then please leave it next to your bin on collection day and it will be taken by Wiltshire Council.

Thank you, Enford Parish Council



Condolences to Amanda and Sophie on the recent loss of their husband and father, Nigel.



Marlborough Christmas Fair

Come and join us for our annual Prospect Hospice Marlborough Christmas Fair at the Town Hall, Marlborough on Saturday 24th November 11am to 3.30pm. Lots of artisan stallholders for those unique gifts as well as mince pies, cakes and refreshments on offer and some fabulous live music. With games, a gift raffle and the chance to have a selfie with Santa it's sure to be a wonderful way to start your festive countdown.

Our family friendly Santa Fun Run is also occurring on the same day; starting at the Common and finishing at the Town Hall. Please see below for our website and Facebook page for details on how to sign up. See you there!




Marlborough Christmas Fair and Santa Fun Run

Saturday 24 November

This year's family friendly fun run will start at Marlborough common and finish at our Christmas Fair at Marlborough Town Hall.

Find out more information about both great events online. Visit:

www.prospect-hospice.net/christmasfair
www.prospect-hospice.net/santafunrun




Prospect Hospice Official Page & Prospect Hospice Marlborough Community



@prospecthospice

Registered Charity Number 280093



Registered with
**FUNDRAISING
REGULATOR**

The Enford Community Fund

Funding is available to help projects/events in the Parish of Enford (which includes East and West Chisenbury, Coombe, Fiffield and Littlecott).

Applications for awards must be made to the treasurer, Amanda Farrow, by email or letter, no later than the first day of the award month (March and September).
amanda.farrow@chisenbury.co.uk or 537 East Chisenbury.

The following guidelines will be followed in allocating funds:

1. Awards will be considered every 6 months in March and September.
2. Awards will be made for individual projects and are not designed to allow awardees to become reliant on the award on an annual/regular basis.
3. Awards will be made to causes that benefit the community and not specific individuals.
4. No awards will exceed £1,000.
5. For any award to be made, there must be agreement by at least 75% of the Committee.

**COME AND JOIN US AT THE SWAN FOR
TUESDAY QUIZ NIGHT AT 9PM
AND**



AN EVENING OF DARTS WEDNESDAYS AT 8:30PM

Hope to see you there!

PARISH HALL, PUBLIC MEETING

Held on 27th September.

For those who were unable to attend you can find the notes of the meeting and all the listed options for the future use of the Parish Hall site on the Enford Website.

If you have any further thoughts, please contact Elizabeth Harrison, Secretary & Treasurer of Parish Hall Management Committee at eabh@btinternet.com

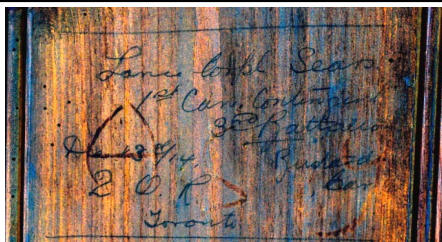


Thank you to all those who have already so kindly contributed towards the costs of the Newsletter to the current tune of £282.50. We are so grateful. However, the cost of printing the newsletter is around £1,700 per annum, so all donations are vital and will be gratefully received.

We realise that some of you may prefer to pay online. If you would like to do so, please email enfordnewsletter@gmail.com and we will provide the account details. You can still donate anonymously if you prefer to do so, either in an envelope or online. If you're not sure where to drop envelopes, please call Jane 670532, Jeni 670210 or Sue 671784.

As a 'Thank You' to St. Michael's Church for allowing access to the church graffiti and for our hospitality, in order to help us raise funds for the Tower Roof (donations only), Tony and Dan have offered to do a full PowerPoint presentation. They have uncovered some fascinating insights into our local history and of tremendous interest to everyone living in the village and surrounding areas. For instance, did you know we have more war graffiti in our church than in any other in Wiltshire and there is an example of one of the signatures details traced below. There will be plenty of time for questions and answers and do bring along anything you feel may be of interest to them.

"Tony Hack is the Project Director of Wiltshire Medieval Graffiti Survey and Dan Miles is Research Resources Officer for Historic England. Both have an interest in the history of World War One as well as historical graffiti. They have been recording and researching the graffiti within Figcheldean and have so far published an overview in this years Wiltshire Archaeological & Natural History Society's magazine. October 2018 will see a further article in Current Archaeology magazine. The research is ongoing as we weave together soldiers' stories, why they visited Figcheldean, what became of them when they left for the Front. This is often an emotive journey but one that has left a legacy for Figcheldean as a place of solace in a time of great turmoil."



In memory of Lance Corporal Richard Roy Sears. April 5, 1915 Age:22

Military Service: Service Number: 9492 Force: Army

Enlistment: September 22, 1914

Unit: Canadian Infantry (Central Ontario Regiment) Division:3rd Bn.

Additional Information: Born: October 15, 1892 Nassau, Bahamas

Burial Information: Cemetery: SWANSCOMBE CEMETERY;

Kent, United Kingdom Grave Reference:1978



Christmas

Coffee Morning & Bring and Buy

Saturday 1st December
at The Old Tearooms
Haxton
10.30 - 12.00



Gifts ★ Raffle ★ Cakes ★ Preserves

— In aid of Fittleton Church —

Advertise in this magazine for 10 issues for only
+£22 per 1/8 page +£48 per 1/3 page +£60 per 1/2 page
and +£100 per full page
Call Jeni Scott-Dalgleish on 01980-670210 or 07779 986920



Cancer Support

It has been brought to our attention that another ex-villager and Youth Club Member may need our support, so we would like to hold another Jumble Sale to help her as well.

**ENFORD VILLAGE HALL 2PM
SATURDAY 24TH NOVEMBER**

If you have any jumble to give us, please drop it in my garage. Thanks, Jane Young 670532

TIME PLEASE LADIES AND GENTLEMEN

Join us for a Pub Quiz like no other and help raise funds for The Royal British Legion and the Armed Forces community.

**MONDAY 12TH NOVEMBER 8:30PM
THE SWAN PUB, ENFORD**




© The Royal British Legion 2018. Registered Charity No 219279



CLAIRE PERRY

*Working hard for the
Devizes Constituency*

 Claire Perry MP
House of Commons
London
SW1A 0AA

 01380 729358

 www.claireperry.org.uk

 claire.perry.mp@parliament.uk



*I hold regular surgeries around the Constituency
- please call or email to book an appointment.*

Netheravon Library

Netheravon Library (on High Street) is
open on

**Mondays 1pm to 7pm and
Thursdays 1pm to 5pm.**

There is a good selection of children's
and adults' fiction and non-fiction
books.

DVDs and audio books can be hired
and there is a computer for public use.

*Come and discover the delights
of your local library.*

Advertising



EQUIDAE EQUINE SERVICES

18 The Bluestone Centre, Sunrise Way, Solstice Park, Amesbury, Wiltshire, SP4 7YR

T: 01980 258472 E: equidae-equineservices@outlook.com

For full details please contact us as above or see our full-page advert in this magazine from next month.

WILTSHIRE WILLOW: LOGS AND FIREWOOD FOR SALE



Seasoned and split logs, kindling and firewood

Ideal for wood-burning stoves and open fires

*Trailer loads for £85.00

*Weekend bags for £15.00

To order your free delivery, please call

Martin on 07788 429772 or Gary on 07518 025155

Kindling on request.

WE DELIVER FREE WITHIN 5 MILE RADIUS OF ENFORD

M NASH & P WILKINS

ALL LANDSCAPING WORK UNDERTAKEN
FENCING*PATIOS*PATHS*PONDS*
BRICKWORK
HEDGE CUTTING*GARDEN CLEARANCE
GRASS CUTTING

Tel: MIKE 01980 635324

Mobile: 07977 950654

Tel: PAUL 01380 840763

Mobile: 07970 557002

MOTOR GARAGE LTD

James Russell

Telephone: 01980 670348

www.themotorgarage.co.uk

enquiries@themotorgarage.co.uk

The Motor Garage
Netheravon, Salisbury, Wiltshire, SP4 9RH

Aaron McBride

PAINTER & DECORATOR

07511760002

acmpaintingdecorating@gmail.com

Free quotation Fully insured

**ACM PAINTING &
DECORATING**



IAN JACOBS

WINDOW CLEANING

Traditional methods, domestic and commercial,
Fascias, soffits & gutters,
conservatory roofs cleaned. Sealed units replaced.

For a professional, reliable, friendly service
call Ian on: **07917 105639** or **01980 671685**

email: imjacobs@hotmail.com

body fitness studio **works**

Abbey Square Amesbury Tel:- 01980 625050

Affordable Personal Training !!

Are you bored at the gym?

Are you tired of being left on your own?

Do you want better results?

You're not on your own at our club!

***We teach, motivate and help you achieve
your desired results***

CALL US NOW ON: 01980 525050



Red Lion Freehouse
& TROUTBECK GUEST HOUSE



Prix Fixe

Our fab Prix Fixe menu is still available Wednesday—Friday lunch times & Wednesday, Thursday evenings!

2 courses for £20

3 courses for £25

We also offer sensible 'lunchtime sized' glasses of paired wines for each course

We would love to remind everyone that the pub is now open Wednesday – Sunday

01980 671124

ENGLISH COUNTRY GARDENS

Garden & lawn maintenance, hedge and tree work, fences, driveways & weed control
Garden waste removed.

Qualified, fully insured and licensed, 23 years experience

WE SUPPLY

Mushroom compost, manure, Pro Grow, woodchips, gravel, stone & scalplings

Loads of logs by size: £80, £140, £180

All seasoned & dry native species.

Can stack

Bags of kindling: £4.50 or 5 bags for £20

LOGS NOW
AVAILABLE IN
1& 2-TON BAGS
For convenient
outside storage

Call or text Nick on 07835299247

Free Delivery

Avon Security

MASTER LOCKSMITHS

Engraving Service Now Available

- > Brass
- > Plastics
- > Aluminium
- > Glass
- > Trophies
- > Gifts

Free Advice & Quotations On Securing Your Property & Belongings

Key Cutting
Locks Supplied & Fitted
Access Control
Safes
PVCu Locks
Master Key Systems
Lock Repairs
Door Furniture & Ironmongery
Transponder Car Keys
Keys To Code
Watch Batteries & Straps
Emergency Call Out Service



01980 626000

21, Salisbury Street, Amesbury, Wiltshire, SP4 7AW
www.avonsecurity net



Digger & Mojo

WOODBOROUGH

DECORATIVE ANTIQUES &
VINTAGE EMPORIUM
WORKSHOPS & CHRISTMAS GIFTS



We restore Antiques + revamp your Furniture
Mending • Painting • Reupholstery



Shop/Office: 01672 851 510
Email: ask@diggerandmojo.com
www.diggerandmojo.com

*"IT'S A KIND OF
MAGIC"
Salisbury Life Magazine*

WOODBOROUGH GARDEN CENTRE
WOODBOROUGH, PEWSEY, WILTSHIRE, SN9 5PF

OPEN 7 DAYS 11am - 5pm



Plumbing, Heating, Electrical & Renewable Energy

Solar Thermal & PV, Air & Ground Source Heat Pumps, Ventilation, Boiler Replacements. Domestic, Commercial & Industrial Contractors. Family Business Established 1970.

Free Estimates and Advice:

Tel: 01980 670667 Fax: 01980 670811

www.rgvengineering.co.uk info@rgvengineering.co.uk



MODERN & TRADITIONALLY DESIGNED MEMORIALS

M J SLY

Monumental Stonemason

*New Memorials, Additional Inscriptions
Restorations, Free Home Visits
Free Brochure*

Marlborough (01672) 516797

Email: martin@mjsly.co.uk

Website: www.mjsly.co.uk

*Workshop & Showroom at Pelham Court,
London Road,
Marlborough, Wiltshire*

Oil Boiler Servicing
Commissioning & Repairs

**Call Graham C Brown & Son
01980 622737**

Fully Qualified



Fully Insured

Experienced Technician

SEAN DEVINE PAINTER & DECORATOR



Free estimates.



Fully insured.

For local professional service call:

07870 454884 or 01980 630864

email: seandevine2@outlook.com

"PAMCAKES"

*Bespoke Cakes for your special
occasions (any age group).
Traditional and 3D, cupcakes and
some Wedding Cakes. See my FB
page "pamcakes of netheravon"
for more details & website
pamcakesofnetheravon.co.uk
pamcakes@write.me or call
07919656141*

Kate Robinson Flowers

For all occasions including
**Funerals, Weddings,
Anniversaries**
For something special and
personal at competitive rates
call Kate on 07906 580361
kate@katerobinsonflowers.co.uk



Bespoke Fashion Design and
Dressmaking for any occasion.

For more details contact

Ramona Edwards

rhensel85@gmx.de // 07827597084

KD WORSDELL

**Carpentry & Joinery
Building Works & Maintenance
Bathrooms and Kitchens**

**Please Call
01980 630545
Or
07759 586162**

AKER

FIRE & SECURITY

INTRUDER, FIRE, CCTV, CARBON MONOXIDE &
SMOKE ALARMS, GATE AUTOMATION

We can offer a one off service or fault finding visit without
the need for a long term contract call 07515358875 or email

info@akerfireandsecurity.co.uk



Tina's Hairdressers

High Street, Netheravon
Unisex Salon

Tel: 01980 670628

Tue 9-5 Wed 9-2 Thurs 1-7
Fri 9-6 Sat 8.45-2

TIPZ & TOEZ

nails now available

Appointments not always necessary

Bits & Pieces (Durrington Ltd)

BUILDING, GARDENING & DIY

PETS, PANELS, AGGREGATE

37 - 39 Bulford
Road, Durrington
Wiltshire SP4 8DL

Tel: 01980 655552
Fax: 01980
652351

Proprietors: P & M Conn

Southern Chimney Services

CHIMNEY SWEEPING & SURVEYS

POTS & COWLS FITTED

FLUE LINER INSTALLATIONS

BURNER INSTALLATION

FOR RATES & APPOINTMENTS

CALL PETE ON 07432 899715

01672 811650

www.southernchimneyservices.co.uk

southernchimneyservices@gmail.com



S.O. CHIMNEY SWEEPING

- ♦ Camera Surveys
- ♦ Birds Nests Removed
- ♦ Fully Insured
- ♦ ICS Registered
- ♦ Friendly Local Service
- ♦ Cowls Fitted

Call Sean on 07881 206536

seanoades@hotmail.com

TIM BUCKLAND BOILER MAINTENANCE

FOR SERVICE AND BREAKDOWNS

Friendly and efficient service

Wide stock of boiler spares in stock

VERY COMPETITIVE PRICES

Also AGAs and RAYBURNs serviced

Tel: 01980 551386

MOBILE HAIRDRESSER

Ring Donna

on

07711 579403

GDB TECHNICAL SERVICES LIMITED Computer/IT support

Small business and Home users

Networking issues/installations

PC Problems

Tuition

General IT advice/help

Upgrades/Data Recovery

Service Support Options

Call 01980 623052 or visit

www.gdbts.com to see if we can help.

VILLAGE HALL AND RECREATION GROUND



Contact Details:

Booking Officer 01980 670501
enfordvillagehall@btinternet.com
www.enfordnewsletter.org

Chairman 01980 670501
Deputy Chairman 01980 671017
Grounds Officer 01980 670210
Maintenance Officer 01980 670526

Private Parties

Planning a children's party?
Celebrating a special birthday or anniversary?
The hall is the perfect venue for weddings and parties!

Day	Activity	Time	Contact
Mon	Yoga Beginners Yoga Intermediate	6.00pm – 7.15 pm 7.30pm—9.00pm	Emma Petitt 01980 670510 yoga@emmapetitt.co.uk
Tues	Enford Film Club	4th Tuesday in the month Doors open 7.00 pm	Judy D'Arcy-Irvine 01980 670501
Wed	Short Mat Bowls	7.30 pm – 10.00pm October to April	David Spencer 01980 670526 spencersgb@yahoo.co.uk
Thu	Pilates	8.45 am – 9.45am	Nicci Caswell 01980 625245 nicci@thecaswells.uk
Thu	Camera Club	8.00 pm – 9.00 pm 1st Thursday in the month	Martin Webb 01980 670537 webb14@btinternet.com
Thu	Gardening Club	7.00pm – 9.00 pm 2nd Thursday in the month	Fanny Middleton 01980 671645 fannysurtees@btinternet.com
Fri			
Sat	Children's Football Coaching Sessions	10.00am -11.00 am Recreation Ground	Steve Todd 01980 670934 STODD@qinetiq.com

ENFORD FOOTBALL CLUB is running weekly Saturday morning Junior Football Sessions.
Contact Ollie Stagg 01980670634
for further information and to join in!

VILLAGE COMMITTEES

PARISH COUNCIL

Chairman	Richard Roberts	671055
Vice Chairman	Peter Cliffe-Roberts	671676
Parish Clerk	Elizabeth Harrison	670034
Councillors	Jane Young	670532
	Anthony D'Arcy Irvine (Rep Tidworth Area Board/Village Hall)	670501
	David Harbottle (Roads and Highways)	670932
	Parochial Church Council)	670510
	Bruce Waight	670113
	Pat Holdway	671792
	Mark Hiskett (PROW)	
	Vick Exley (Police & Neighbourhood Watch)	
	Diane Christie-Rundle (Communications)	671769
	Peter Cliffe-Roberts (Planning Committee)	671676

NETHERAVON SCHOOL

Chairman of Governors	Mrs Dot Georgeson
Head Teacher	Ms Lisa Tight

NEWSLETTER

Chair	Clare Burge
Vice Chair	Jane Young
Secretary	Ann Houghton
Treasurer	Roz Perry
Advertising	Jeni Scott-Dalgleish
Village Hall Rep	Jacqui Elkins
Parish Council Rep	Jane Young
Compiler:	Sue Cosgrove
Committee Member	Gay Monk
	Diane Christie-Rundle

PAROCHIAL CHURCH COUNCIL

Church Wardens	Henry Middleton
	Sue de Candole
Treasurer	Tom Hunter
Secretary	Tom Hunter
Council Members:	Mary Burdick
	Anastasia Dubovic,
	Fanny Middleton
	Tim Edwards
	Michael Whitaker

VILLAGE HALL

Chairman and Booking Officer	Judy D'Arcy-Irvine
Vice Chairman	(670501)
Treasurer	Maggie Maund
Secretary	Hannah Tucker
PC Rep	Maggie Maund
Camera Club	A D'Arcy-Irvine
PCC	Jane Young
Newsletter	Judy D'Arcy-Irvine
Property Officer	Jacqui Elkins
Grounds Officer	David Spencer
Gardening Club	Hamish Scott-Dalgleish
Short Mat Bowls	Rosemary Cox
Junior Football Club	David Spencer
Youth Club	Ollie Staggs

YOUR DIARY November 2018 (For regular Village Hall dates, see page 30)		
1st	Thu	Black box, Blue bin /Hub in the Pub 10am The Swan/Netheravon Library 1pm-5pm/ Illustration Fun V. Hall 2pm/Camera Club V. Hall 8pm
2nd	Fri	Youth Club Phoenix Hall, Netheravon 6pm
3rd	Sat	Youth football 10am V. Hall
4th	Sun	Team Service 10:30am Enford Church
5th	Mon	Netheravon Library 1pm-7pm/Bridge & Whist Phoenix Hall, Netheravon 2pm
6th	Tue	SwanCraft 10am The Swan
7th	Wed	Short Mat Bowls 7:30pm V. Hall/Darts' night 8:30pm The Swan
8th	Thu	Household Waste /Hub in the Pub 10am The Swan/Netheravon Library 1pm-5pm
9th	Fri	Youth Club Phoenix Hall, Netheravon 6pm/ WW1 Soldiers' Graffiti Presentation, Figheldean Village Hall 7pm
10th	Sat	Youth football 10am V. Hall/Evening Book Launch Phoenix Hall, Netheravon
11th	Sun	REMEMBRANCE DAY - 9am Outdoor Service at the Lychgate, Enford Church/ Curry Lunch V. Hall 12noon
12th	Mon	Netheravon Library 1pm-7pm/Bridge & Whist Phoenix Hall, Netheravon 2pm/ Royal British Legion Quiz 8pm The Swan
13th	Tue	SwanCraft 10am The Swan
14th	Wed	Short Mat Bowls 7:30pm V. Hall/Bridge and Whist Drive V. Hall 2pm/ Darts' night 8:30pm The Swan
15th	Thu	Black box, Blue bin /Hub in the Pub 10am The Swan/Netheravon Library 1pm-5pm/ Gardening Club V. Hall 7pm
16th	Fri	Newsletter submission deadline /Youth Club Phoenix Hall, Netheravon 6pm
17th	Sat	Youth football 10am V. Hall/Christmas Fayre Enford Church 2pm
18th	Sun	Breakfast Church 9.30am Enford Church
19th	Mon	Netheravon Library 1pm-7pm/Bridge & Whist Phoenix Hall, Netheravon 2pm
20th	Tue	SwanCraft 10am The Swan/Parish Council Meeting 7:30pm V. Hall
21st	Wed	Short Mat Bowls 7:30pm V. Hall/Darts' night 8:30pm The Swan
22nd	Thu	Household Waste /Hub in the Pub 10am The Swan/Netheravon Library 1pm-5pm
23rd	Fri	Mobile Library 3:40pm Water Lane/Youth Club Phoenix Hall, Netheravon 6pm
24th	Sat	Youth football 10am V. Hall/Prospect Christmas Fair 11am Marlborough/ Cancer Support Jumble Sale 2pm V. Hall
25th	Sun	Evensong 6pm Enford Church
26th	Mon	Netheravon Library 1pm-7pm/Bridge & Whist Phoenix Hall, Netheravon 2pm
27th	Tue	SwanCraft 10am The Swan/Film Club V. Hall 7pm for 7:30pm
28th	Wed	Short Mat Bowls 7:30pm V. Hall/Darts' night 8:30pm The Swan
29th	Thu	Black box, Blue bin /Hub in the Pub 10am The Swan/Netheravon Library 1pm-5pm
30th	Fri	Youth Club Phoenix Hall, Netheravon 6pm