

# Enford Newsletter

What's Happening In and Around Enford



*Lily of the valley*



## MAY 2019

## USEFUL NUMBERS

### EMERGENCY SERVICES

#### DOCTORS

|            |   |              |
|------------|---|--------------|
| DURRINGTON | Avon Valley Practice Surgery            | 01980 652378 |
| DURRINGTON | Cross Plains Surgery                    | 01980 652221 |
| UPAVON     | Avon Valley Practice Surgery, Fairfield | 01980 630221 |

#### HOSPITAL

|                             |              |
|-----------------------------|--------------|
| SALISBURY DISTRICT HOSPITAL | 01722 336262 |
|-----------------------------|--------------|

#### POLICE

|        |     |
|--------|-----|
| POLICE | 101 |
|--------|-----|



#### OTHERS

|                      |                |
|----------------------|----------------|
| ELECTRICITY          | 0800 072 72 82 |
| ENVIRONMENTAL AGENCY | 0800 80 70 60  |
| FLOOD LINE           | 0345 988 1188  |
| GAS                  | 0800 111 999   |
| PLAINWATCH           | 01980 674700   |

#### DURRINTON LINK

|                              |              |
|------------------------------|--------------|
| LINK (Durrington & District) | 01980 594857 |
|------------------------------|--------------|

#### SCHOOLS

|  |              |
|--|--------------|
| DURRINGTON, Avon Valley Secondary School | 01980 652467 |
| FIGHELDEAN, St Michael's C of E Primary  | 01980 670268 |
| NETHERAVON, All Saints' C of E Primary   | 01980 670339 |
| RUSHALL, Rushall C of E Primary          | 01980 630360 |
| PEWSEY, Pewsey Vale Secondary School     | 01672 565000 |

#### WILTSHIRE COUNCIL

|                 |               |
|-----------------|---------------|
| BIN COLLECTIONS | 0300 456 0102 |
|-----------------|---------------|

<http://www.wiltshire.gov.uk/rubbish-collection-day>

HOUSEHOLD RECYCLING CENTRES (HRC)

<http://www.wiltshire.gov.uk/household-recycling-centres>

### **WHAT CAN YOU DO TO REDUCE CRIME ON SALISBURY PLAIN?**

If any crime is taking place call 999 and do not under any circumstances challenge the offenders.

Report suspicious activity to PLAINWATCH (01980 674700) or [PLAINWATCH@landmarc.mod.uk](mailto:PLAINWATCH@landmarc.mod.uk). The more information received the better, e.g. time, place, vehicle registration, description of individuals and vehicles.

#### **Health and Safety reminder for all Military Training Areas and Ranges:**

Do not touch or tamper with Military debris.

Wash your hands before you eat.

Clean your footwear before you enter your car or home.

## CONTENTS

|  |       |
|--|-------|
| Useful Telephone Numbers/<br>Crime Reduction/                      | 2     |
| Next Newsletter Deadline   | 3     |
| Team Vicar's Musings/Save the Date                                 | 4     |
| Church Services/Parish News/<br>Condolences                        | 5     |
| Amateur Dramatic Play  | 6     |
| Film Club/Tickets for Sale   | 7     |
| Gardening Club/Congratulations/<br>SPTA/Swanfest Save the Date     | 8     |
| Camera Club/Youth Club   | 9     |
| Swan Craft/Bridge & Whist group/<br>Defibrillator                  | 10    |
| Hub in the Pub/SchoolReaders plea/<br>Parish Council Meeting dates | 11    |
| PC AGM & Annual Meeting/<br>Mobile Library                         | 12    |
| Maypoles   | 13    |
| Village Hall Party   | 14    |
| Primary School Spring Fayre  | 15    |
| Litter Pick Results  | 16    |
| Age UK plea/Victim Support/Darts/<br>Fun Football                  | 17    |
| Toddler Group/Netheravon Library/<br>Stars Appeal Jumble Sale      | 18    |
| Volunteers needed/Village Events Notice                            | 19    |
| Pre-School Summer Fayre  | 20    |
| Music Concert/Art Exhibition                                       | 21    |
| Parish Council Minutes   | 22-23 |
| Telephone Directory Notice   | 24    |
| Location of Dog Mess Bins  | 25    |
| Enford Community Fund/<br>Two Thank You Notices/Local MP           | 26    |
| Advertising  | 27-33 |
| Village Hall Diary   | 34    |
| Village Committees   | 35    |
| May Diary  | 36    |

### The next Newsletter deadline is

**FRIDAY  
17th May 2019**

**Emails are preferred** but all items for inclusion, whether they are handwritten, typed or via e-mail, **MUST be submitted by the deadline date.**

These articles may be handed in to any Newsletter Committee member.

**Please send e-mails to  
enfordnewsletter@gmail.com**

Enford Newsletter Committee reserves the right to reject or omit from publication any material that is considered by majority of Committee Members to be detrimental to any person or which is not in the best interest of the community as a whole.

All letters and articles must be signed, but the Committee will withhold the name of the writer if this is requested when submitted.

### Important Notice for Contributors

The next edition will be a double issue for June and July. Please ensure you submit content for both months by 17th May to avoid disappointment.

## A word from Gale Hunt our Team Vicar:



'A change is as good as a rest' is a well-known proverb that originates from the Victorian times.

We all have to cope with change, but it's often forced on us, and because we aren't in control it can be stressful and painful. That often leads us to try to keep things as they are and preserve the status quo – but sometimes being made to look at things differently can bring its own rewards. Perhaps that's one of the reasons for the success of Marie Kondo's way of decluttering, where you ask if something brings you joy when you hold it.

It's good to declutter our homes (in whatever way works for us) on a regular basis, as the freeing up of space and moving things around enables us to look at things from a new perspective. It's good to do something similar with our spiritual lives too and discover what are the things that are holding us back from growing in our faith and going deeper into our faith. What might we need to change to enable us to grow? Christians have just celebrated Easter, a time of new life and renewal. We're now in a period of waiting for Pentecost (June 9<sup>th</sup>) when we celebrate the coming of the Holy Spirit on the first disciples. It's the Holy Spirit working in our lives that helps us to transform and grow in faith.

So, this May, why not spend some time thinking about and acting on what might be holding you back from growing in faith. If you don't have a faith, then why not take a fresh look and explore what faith has to offer.

Best wishes  
Gale

## SAVE THIS DATE FOR YOUR DIARY!

Enford Church Christmas Fayre

Saturday, 30th November 2019, 1pm to 4pm.

Do come along and meet Father Christmas and enjoy:  
festive music, tea and cakes, Christmas stalls and lots more.  
Join us to celebrate the fourth year of our successful fund-raising  
Christmas Fayre at Enford Church.



## ALL SAINTS CHURCH, ENFORD Services



| May  |                              | June |                                     |
|------|------------------------------|------|-------------------------------------|
| 5th  | Holy Communion, 9.30am       | 2nd  | Holy Communion, 9.30am              |
| 12th | Team Service, Enford 10:30am | 9th  | Team Service in Figheldean, 10.30am |
| 19th | Breakfast Church, 9.30am     | 16th | Breakfast Church, 9.30am            |
| 26th | Evensong, 6pm                | 23rd | Evensong, 6.00pm                    |
|      |                              | 30th | Family Communion, 9.30am            |

More information, help, details of Services in the 7 Avon Valley churches  
and Minutes of PCC meetings can be found on the website at  
[www.avonriverteam.org.uk](http://www.avonriverteam.org.uk)

### PARISH NEWS

**CHURCH AGM:** The meeting was held on Tuesday 23 April. Thank you to all those, who were able to attend and contribute to discussions.

**SOCIAL EVENTS:** Enford Church PCC is organising a number of village social events in the coming months - please text your email address to 07973 867850 if you would like to receive email updates and to be kept informed.

**TEAM SERVICE :** There is a TEAM SERVICE at All Saints Enford at 10:30 am on Sunday 12<sup>th</sup> May, with Team Rector Rev Philip Bromiley preaching. Always a good occasion, with coffee and biscuits to follow.

**BREAKFAST CHURCH** is resuming on 19<sup>th</sup> May, having taken a break at Easter. This is a relaxed, friendly service, with bacon rolls and croissants served at the beginning. It is well liked by children and adults – come and join us, if you can.

**CONCERT:** Posters for the South London Jazz Orchestra Concert in the Church 7pm on Saturday 13<sup>th</sup> July will be appearing in the village in due course. This would be an amazing opportunity to hear these brilliant musicians locally.

**EAST CHISENBURY PRIORY** opens its magnificent gardens with annual PRIORY TEAS on Sunday 9<sup>th</sup> June 2019 from 2pm till 6pm. Fantastic opportunity to enjoy the gardens and sample some home-made cakes with proceeds kindly donated to the church.

**TEAM VICAR AWAY:** Rev Gale Hunt, will be taking a well-earned 3 month sabbatical from the end of April. Whilst she is away our Team Rector, Philip Bromiley, will hold the fort; he can be contacted on 01980 258549.



**Condolences to the family of  
Helen Gowland  
on her sad passing.**





# **DADS Presents**

**The Farndale Avenue Housing Estate**

**Townswomen's Guild (FAHETG)**

**Dramatic Society Murder Mystery**

**"Murder at Checkmate Manor"**

by David McGillivray and Walter Zerin Jnr

**Friday 17th and Saturday 18th  
May at 7.30pm**

**£15 to include a ploughman's supper,  
dessert and coffee.**

**BYO drinks.. Adults only**

**Pre-booked tables only**

**Book your table on 07798 60 61 60 or at  
[durringtondrama@hotmail.com](mailto:durringtondrama@hotmail.com)**

**In true Townswomen Guild style please create a table  
decoration for your table in a teacup!**

**Prize for the creation judged to be the best by FAHETG's  
president, Mrs Reece!**

**Raffle at interval**

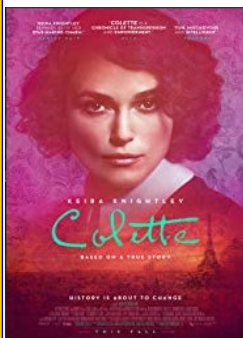




## ENFORD VILLAGE HALL FILM CLUB



**Tuesday May 28th "Colette"**



Based on the true story of Sidonie-Gabrielle Colette, from a small village in rural France, who marries successful Parisian writer, Henry Gauthier-Villars known as 'Willy'. Published under Willy's name, Colette pens a semi-autobiographical novel about a witty and brazen country girl named Claudine, sparking a bestseller and a cultural sensation. After its success, Colette and Willy become the talk of Paris and their sexual adventures with other women inspire additional Claudine novels. Colette's fight over creative ownership and gender roles drives her to overcome societal constraints, revolutionising literature, fashion and sexual expression.

**Tickets £5.00 each**

**To book tickets and for more information contact 01980 670501  
or e-mail: [enfordvillagehall@btinternet.com](mailto:enfordvillagehall@btinternet.com)**

**Doors open 7.00pm Film Starts at 7.30 pm  
Drinks available from the Bar**

**No Film Club in July or August.**

Possible future titles : "Vice", "Mary Queen of Scots", "All is True" ,  
"Can you ever forgive me", "Phantom Thread" and "The Wife"

**We always need your help in choosing films – please let us know of any films  
friends have recommended! Would love to hear your suggestions.**

If you would like to be included in our e-mail contact list for all  
Enford Village Hall events, including the film nights, please let us know.  
Lifts can be arranged if you let us know in advance.



### JASPER CARROTT CITY HALL TICKETS

Would anyone be interested in purchasing 2 tickets for  
Jasper Carrott's Stand Up & Rock



Friday 27<sup>th</sup> September 2019, 7.30 PM at the City Hall Salisbury £30 each ONO.

Telephone; 670489

# ENFORD GARDENING CLUB

**Thursday 9th May 2019 7.00 pm**

Enford Gardening Club has a garden visit to a house in Salisbury on Thursday 9<sup>th</sup> May, 7.00.

Please contact Fanny Middleton on 0198 671645 or [fannysurtees@btinternet.com](mailto:fannysurtees@btinternet.com) for details.

There will be **no meetings in June, July or August**, so the next meeting will be Thursday 12<sup>th</sup> September.

Details will be available nearer the time.



Generic Picture

**Congratulations to  
Lisa Goodship and  
Dallas Bates who  
recently got  
married in  
New Zealand**

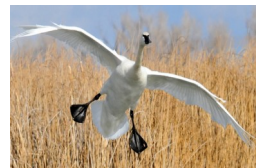
## SPTA NEWS

For Salisbury Plain Training Area News, giving times of live firing, current and upcoming exercises go to

<https://www.gov.uk/government/publications/salisbury-plain-training-area-spta-newsletter>



**Save the Date**



**Swanfest  
will be back  
Saturday 24<sup>th</sup> August**





## Enford Camera Club



**Thursday 2nd May 2019 8.00pm to 9.30pm**

**at Enford Village Hall, SN9 6DD**

**Tickets £3 including free refreshments.**

To reserve a seat, please  
e-mail [enfordcameraclub@btinternet.com](mailto:enfordcameraclub@btinternet.com)

This evening's meeting will be a practical, so please bring along your cameras as we will be looking at backlighting techniques to take photos with the sun in front of you.



**Photo: Enford's Red Kite by Martin Webb**

Please bring along your photos of the Enford Red Kites  
(or any other flying birds).

The camera club charge only £3 per evening. You don't have to join the club,  
just turn up for the night.

Contact [enfordcameraclub@btinternet.com](mailto:enfordcameraclub@btinternet.com) for more information.

## Enford & Avon Valley Youth Club

Join us every Friday 6pm-8pm Phoenix Hall Netheravon



# Swan Craft



Do you enjoy making and creating?

If you enjoy hobbycraft, be it with wool, fabric, beads, felt, paper etc. then please come and join us at The Swan on Tuesday mornings 10.00am - 12.00noon

Any craft medium you may be interested in will be very welcome. Feel free to bring along any samples of your creations to show and share (or just yourself).

Anybody who may be slightly interested is more than welcome!

**For more information contact Jacki Brightman—01980 671598**



**CONTRACT BRIDGE/WHIST GROUP**  
**THE PHOENIX HALL, NETHERAVON**  
 EVERY MONDAY AFTERNOON 2-4pm  
 £2 PER SESSION. TEA/COFFEE INCLUDED.  
 NO JOINING FEE. CAKES ACCEPTED!



WE'RE HERE FOR BEGINNERS TOO. TUITION BOOKS FOR SALE @£2.50.

EXPERIENCED PLAYERS WELCOME TO HELP TEACH BRIDGE TO BEGINNERS.  
 THIS IS A FUN GROUP WHO PLAY FOR ENJOYMENT.

EXPERIENCED PLAYERS ARE ALSO WELCOME TO BRING A 4SOME (AND A TABLE) IF YOU HAVE FRIENDS WHO PLAY REGULARLY.

**Organiser: Alan Wood TEL: 01980 671265**

## ENFORD DEFIBRILLATOR

The defibrillator is in a yellow box on the wall of

Hill House, 9 Longstreet, SN9 6DD

Grid Ref SU142515.

It is located in the centre of Enford 25m north of The Swan next to the parish notice boards.

If you think you need to use the defibrillator call 999.  
 The Emergency Service will give you the code to get into the cabinet.

YOU CAN READ MORE ABOUT IT AT [WWW.ENFORDNEWSLETTER.ORG](http://WWW.ENFORDNEWSLETTER.ORG) WHERE YOU WILL ALSO FIND A LINK TO A SHORT VIDEO SHOWING YOU HOW TO USE IT.



## Schoolreaders

improving literacy • increasing life chances

### MORE VOLUNTEERS NEEDED IN WILTSHIRE TO LISTEN TO CHILDREN READ IN PRIMARY SCHOOLS

Can you spare an hour or two a week to listen to children read in a primary school?

The reading charity Schoolreaders is looking for volunteers to carry out this important role.

Our volunteers find the scheme incredibly rewarding, knowing that a few hours helping a child learn to read each week can have such a great impact on their life chances.

**Please visit the website**  
[www.schoolreaders.org](http://www.schoolreaders.org) to  
join or call 01234 924111 for  
further information.

### Dates for Enford Parish Council Meetings in 2019.

Meetings are held in the **VILLAGE HALL** and start at **7.30pm** unless otherwise stated.

| DATE:                               | MEETING:  |
|-------------------------------------|---|
| Tuesday, May 14 <sup>th</sup>       | Parish Council A G M - 6.30pm<br>Annual Parish Meeting - 7.30pm |
| Tuesday, June 11 <sup>th</sup>      | Parish Council  |
| Tuesday, July 9 <sup>th</sup>       | Parish Council  |
| Tuesday, September 10 <sup>th</sup> | Parish Council  |
| Tuesday, October 8 <sup>th</sup>    | Parish Council  |
| Tuesday, November 12 <sup>th</sup>  | Parish Council  |
| Tuesday, December 3 <sup>rd</sup>   | Precept only meeting  |
| Tuesday, December 10 <sup>th</sup>  | Parish Council  |

---

## ENFORD PARISH COUNCIL A.G.M. AND ANNUAL PARISH MEETING 2019

Both meetings will be held on Tuesday May 14<sup>th</sup> in the Village Hall from 6.30pm.

**6.30pm - ENFORD PARISH COUNCIL** - Whilst the Parish Council AGM is for the Council only - to elect a Chairman and designate representatives for the coming year – members of the village are welcome to attend but must remain silent.

**7.30pm - ENFORD ANNUAL PARISH MEETING** - All members of the village are welcome to attend the Annual Parish Meeting and hear reports from each of the committees, clubs, groups etc invited to attend. Reports should cover events of the last year and any known events for the coming year. A brief financial report is also normally given.

Refreshments will be available.

---



### **Mobile Library Service**

**The mobile library visits Enford, Water Lane every four weeks on a Friday  
3.45 – 4.10pm.**

For adults, there is a large range of information, books and novels, ranging from the latest thriller to best-selling autobiographies, cookery and gardening. There is also a wide selection of large print and talking books.

If you are a parent with young children, you will find a great range of picture books and story CDs for them to enjoy; there are information books and plenty of exciting reading for older children as well.

There is access to the whole county stock through the Wiltshire Libraries online catalogue. Books, audio books and DVDs can be requested on the mobile or online and collected by customers from the mobile library. All children's stock can be requested free of charge with a small fee for adult requests. You can also use your membership card at any Wiltshire library and return books to the mobile library.

- ♦ It is free to join and there are no fines for overdue books on the mobile library.
- ♦ It's easy to join, just bring along proof of your name and address and the friendly Mobile Manager will sign you up straight away – they are always happy to help.
- ♦ The mobile has full accessibility and is fitted with a customer lift.

**Future stop dates:-**

**May 10, June 7, July 5, August 2 AND 30**

**More information about the mobile library service is available online at**

**<http://services.wiltshire.gov.uk/MobileLibrary/>**

## Maypoles

A maypole is a tall, often wooden, pole erected as a part of mainly European folk festivals, around which a maypole dance often takes place. Festivals may occur on May Day (May 1) or Pentecost (Whitsun), although in some countries it is instead erected at Midsummer. The origins remain unknown but speculation suggests they could be Germanic paganism, Iron Age or early Medieval cultures or simply signs that the happy season of warmth and comfort had returned. It appears they were first seen, at least in the British Isles, between 1350 and 1400. There's no definitive answer to what the Maypole symbolises, maybe the world's axis; a remnant of the Germanic reverence for sacred trees; cosmological or phallic symbols although the last suggestion is disregarded by some historians since maypoles were never carved to appear phallic. Some believe maypoles were simply a part of the general rejoicing at the return of summer and the growth of new vegetation bearing similarities with the May Day garlands which were also a common festival practice in Britain and Ireland. Maypoles, both permanent and temporary are still used in May festivals in various countries including Malta, Germany, Austria, USA, Italy and Britain.



**Germany and Austria** - the maypole may be painted in local colours with emblems depicting local crafts and industry; there's often a procession through the village accompanied by a brass band. In some areas unmarried men erect young birch trees, which may reach over 5m high and decorated with multicoloured crepe paper and often with a red wooden heart with their sweethearts' name written on it in front of the girls' houses.



**Britain** - the maypole was found primarily in England and areas of the Scottish Lowlands and Wales which were under English influence. The practice became

increasingly popular and maypoles became

symbols that brought the local community together. Some parishes would join together to obtain and erect one; elsewhere, e.g. Hertfordshire in 1602 and Warwickshire in 1639, people stole the poles of neighbouring communities, leading to violence. In some cases the wood for the pole was obtained illegally, e.g. in 1603, the earl of Huntingdon was angered when trees were removed without permission from his estates.

Protestantism in England led to increasing disapproval of maypoles and other May Day practices and under the Reformation many maypoles, were destroyed. Mary I reinstated Roman Catholicism and the practice of maypoles. Under later English monarchs, the practice became sporadic, depending on local governors. In Scotland Presbyterianism had taken powerful hold and largely wiped out the practice of maypoles across the country.

By the 19th century the maypole had been subsumed into the symbology of "Merry England" and theatrical fashion saw the addition of intertwining ribbons. As revived, the dance is performed by pairs of boys and girls (or men and women) who stand alternately around the base of the pole, each holding the end of a ribbon. They weave in and around each other, boys going one way and girls going the other and the ribbons are woven together around the pole until the merry-makers meet at the base, often supervised by local Morris dancing groups.



In some regions highly decorated sticks with hoops, cross-sticks or swags attached, covered with flowers, greenery or artificial materials such as crepe paper were taken by children to school on May Day morning and prizes given for the most impressive. The tradition is garlanding, and was a central feature of Mayday celebrations in central and southern England until the mid-19th century.

The tallest maypoles in Britain are believed to be in Welford-on-Avon, Barwick-in-Elmet, W Yorks (86 ft), and Nun Monkton, N Yorks (88 ft).



## The Village Hall 10th Anniversary June 2019 Party

Time flies and it is almost ten years since the new Village Hall was opened in June 2009.

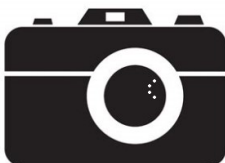
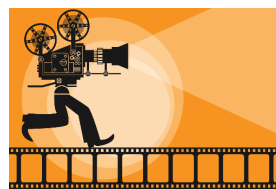
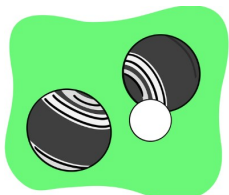
It has been a great success and is used by many clubs and classes, as well as being a very popular venue for children's parties, anniversaries, weddings and birthdays!



The Committee would like to invite everyone to a 10th Anniversary Party on

Friday 7th June 6.00 p.m. to 8.00 p.m.

Drinks and small eats will be provided by the Committee to say "Thank You" to everyone for their support over the past ten years and to raise a glass to the next decade!





Avon Small Saints Pre-School

# **Spring fayre**

**Sat 11th May 2019**

**12 - 3pm**

**Netheravon School  
field**

**Raffle, Adult Tombola,  
Child Tombola, Refreshments,  
games stalls and more...**

**Outside stall welcome £5 and a  
Raffle prize, please message on fb**



**Enford Litter Pick**  
**Saturday**  
**13th April**



**Enford Parish Council**  
would like to say

a

**huge**  
**thank you**  
to

**all the volunteers**



**and to Pete and Emma (Hub in the Pub) for the delicious burgers and other refreshments.**

**There were about 30  
depicted here),  
who collected over**



**volunteers (not all  
including little ones,  
20 bags of rubbish.**



**Now it is clean,  
let's keep it  
clean!**







**Do you have some time to spare to support local older people?**

Information about all our roles can be found:

- ⇒ on our website [www.ageukwiltshire.org.uk](http://www.ageukwiltshire.org.uk) or
- ⇒ by calling our office on 01380 727767
- ⇒ or emailing us at [volunteering@ageukwiltshire.org.uk](mailto:volunteering@ageukwiltshire.org.uk)

Whatever your reason for volunteering, we'd be delighted to hear from you.

**VS**

## **VICTIM SUPPORT Have you been affected by crime?**

Victim Support offers free and confidential help and support to anyone affected by any crime.

The charity is independent of the police and you can access services whether or not the crime has been reported and regardless of when it happened.

For support, contact: Wiltshire Office: **01380 738878**

Freephone: **0800 281 0113** Email: [wiltshire@victimsupport.org.uk](mailto:wiltshire@victimsupport.org.uk)

[As an independent charity, we work for a world where people affected](#) by crime and traumatic incident get the help they need and the respect they deserve. To find out how you can help us help more people visit [victimsupport.org.uk/get-involved](http://victimsupport.org.uk/get-involved)



## **COME AND JOIN US FOR AN EVENING OF DARTS**

**Every Wednesday 8.30pm  
at The Swan  
Hope to see you there!**



## **FUN FOOTBALL SESSIONS (Age 5yrs to 11yrs)**

**EVERY SATURDAY MORNING  
(during school term time)**

**AT ENFORD VILLAGE HALL**

**10 until 11 am £2.50 a session**



For the dates for the next coaching sessions or further information please contact Steve Todd on 01980 670934

Any child who wants to take part should be aged between 5 and 11 years old and they should bring their own shin pads, suitable footwear and a drink.

**FA Level 1 and 2 Coaches, CRB checked**



## Little Phoenix Toddlers



We meet during term time  
every Monday morning  
(excluding Bank Holidays) at  
Phoenix Hall Netheravon 9am to 11.30am  
£1.50 per family  
Parents, babies and toddlers all welcome  
Contact Alice at [awootton1@hotmail.co.uk](mailto:awootton1@hotmail.co.uk)

### Netheravon Library

Netheravon Library (on High Street) is open on

**Mondays 1pm to 7pm and  
Thursdays 1pm to 5pm.**

There is a good selection of children's and adults' fiction and non-fiction books.

DVDs and audio books can be hired and there is a computer for public use.

*Come and discover the delights of your local library.*

**Jumble  
SALE**

*in aid of the*

*All money goes to Radnor Ward  
Intensive Care Unit*

*Saturday 8th June*

*Enford Village Hall 2pm*



*Huge raffle, tombola, cake stall, refreshments  
and more!*



## CHISENBURY PRIORY OPEN GARDEN

By kind invitation of  
John & Tessa Manser

SUNDAY 9<sup>TH</sup> JUNE 2 – 6



### TEAS IN AID OF ENFORD CHURCH

Would you be prepared to bake a cake and/or help on the day?

We need approx. 35 cakes (a few gluten-free options too!)  
plus 30 helpers to make it all run smoothly.

Previous bakers and helpers will be emailed separately  
but if you are new to the parish or  
would like to get involved for the first time,  
please contact either Fanny Middleton or Jeni Scott-Dalgleish.  
We really do need your help!

Fanny Middleton  
671645

[fannysurtees@btinternet.com](mailto:fannysurtees@btinternet.com)

Jeni Scott-Dalgleish  
670210

[jscottdalgleish@aol.com](mailto:jscottdalgleish@aol.com)

## Summer Fete at Enford

Over the last few years, the Enford, Chisenbury and Coombe Fete Committee has seen its membership drop by half, principally due to house moves away from the area. Over the last year the current Committee have tried to attract sufficient new members who are able and willing to fill the necessary organisational roles to make the running of the fete sustainable. Our thanks go to those who have stepped forward but sadly, and despite considerable effort, we have been unable to enlist sufficient new members to take the fete forward.

As a result, the current Committee have decided that the only course of action is for them to stand down as regards the organisation of a summer fete in Enford.

**The current Committee will however, continue to organise the Halloween and Fireworks Event at the end of October and to continue in its stewardship of the Enford Community Fund for the foreseeable future.**

The Committee ask that if there is a group within the Parish who would like to put forward a viable plan to organise and run a summer event in Enford, that they get in touch as there is funding and equipment available along with considerable expertise and willingness to help from the outgoing Committee.

**In the first instance, please contact Amanda Farrow  
([Amanda.farrow@chisenbury.co.uk](mailto:Amanda.farrow@chisenbury.co.uk))**

*Friends of Netheravon  
School PTA*

# **Summer fayre**

**Sat 22nd June 2019**

**12 - 3pm**

**Netheravon Primary  
School field**

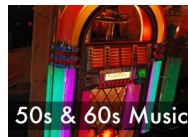
*Raffle, Adult Tombola,  
Child Tombola, BBQ, games, bouncy castle & more.....*

*Meet Mickey & Minnie Mouse*

**Outside stall welcome £5 and a Raffle prize, please message on fb or  
contact the school office.**



**ON FRIDAY MAY 3<sup>RD</sup> 2019  
7.15PM FOR 7.30PM**



St Michael & All Angel's Church, Figcheldean  
proudly presents another entertaining evening  
and an all-round musical experience with

## **LIVERY ROAD**

**FEATURING FOLK, SEA SHANTIES, 50'S/ 60'S, COMICAL  
AND SING-A-LONG  
AN IDEAL MIX!!**

**Suggested donation on the door - £10 Adult / £2.50 Child to 14.**

**Seating Price includes a wide range of 'nibbles'  
but please bring your own tipples and glasses.**

**Please contact Trevor on 670153 to reserve your seat (s) or  
trevorwoodbridge\_5@outlook.com  
so that we have an idea of numbers for catering, tables and seating.**

**There will be a raffle (of course!) and any donations  
as prizes would be very welcome - thanks!**

**\*All proceeds to help our running costs and  
keeping our church welcoming\***

## **9th Avon & Bourne Valley Art Exhibition**

**Saturday/ Sunday May 11th / 12<sup>th</sup> 2019**

**11.00 am - 5.00 pm**

### **FIGHELDEAN VILLAGE HALL**

(Just off A345 between Durrington & Netheravon).

Now established as an important venue for all up and  
coming Artists looking for a well organised and  
professional alternative to show their works  
- over 250 exhibits on view in 2018.



- Open to the public with **Free Admission** -  
Light refreshments available.

Run on a totally non-profit basis, this  
year we are supporting 'Bloodwise',  
the charity for Leukaemia and  
Lymphoma Cancer Research.



For full details of how to enter, please e-mail  
trevorwoodbridge\_5@outlook.com (01980/670153)  
or richardhorner008@icloud.com (01980 / 670626)

## ENFORD PARISH COUNCIL (For future meetings see p11)

### Abridged Draft Minutes of the meeting of 9th April 2019

#### 19/038 Public Questions

Mike Germany attended the meeting to thank the Parish Council for their efforts in finally getting the lane in Fifield swept, cleared up and the verges cut back, also for the new salt bin which is on order. He will be doing a litter pick in Fifield with his grandson but may not meet at the Swan afterwards. He also took some of the new 'clear up after you dog' signs to post in the village.

#### 19/039 Police Matters and Neighbourhood Watch

No Police Liaison was present and neither had an up to date Police report been received. Cllr Waight reported the following items which had recently been stolen – 2x 4x4 all-terrain 'Gators' (at a value of circa £15,000 each), not just his own quad bike and anvil but also the Baxter's quad bike and one at Burbage, another anvil from Pewsey, batteries from Mr Mackie's farm, Urns from The Priory (a vehicle was caught on CCTV), a trailer in Everleigh where the thieves were caught in the act, blocked the road with the trailer, unhitched it and drove off. His son also caught a person fly tipping heavy duty rubbish who then said he was clearing it up. Cllr Exley suggested there should be an obvious 'drive through' the village by the Police to try and deter the amount of theft in the area. The next NGTG meeting is on 14<sup>th</sup> May at 2.30pm and it was suggested 'Enford' should attend to raise the profile and the problem.

#### 19/041 Unitary Council Matters

- WCllr Ian Blair-Pilling was unable to attend the meeting but wanted to remind everyone of the new workshop intended to increase the use of the Public Rights of Way in the area. Cllr Hiskett has this noted for 15<sup>th</sup> May at 7.00pm in Collingbourne Ducis. Everyone is welcome to attend.

#### 19/045 Matters Arising

- i. New Salt bin for Fifield. The Clerk reported she had met the contractor on site to agree the location. Where the hedge stops, coming away from the A345, the ground is suitable for a base and the position safely away from the A345 traffic. The Contractor will liaise with Highways to get their clearance before installing the bin and filling it with salt. The 200L bin will be in the region of £170.00 +VAT.
- ii. New Dog mess bin in Water Lane. The Clerk reported she had placed the order with the contractor. A brief discussion was had about the ground where it was proposed to be installed (by the salt/grit bin) and it was agreed that it would be better on the opposite side of the road. The Clerk will contact the Contractor to change the location (if it's not too late). More anti dog fouling stickers were distributed for display.
- iii. Cllr Roberts reminded everyone of the annual Litter Pick on Saturday morning. Meeting at the bus stop/junction at the bottom of Enford Hill at 10.30 am. High viz jackets, gloves, pickers and bags will be supplied and attendees will be 'rewarded' with tea, coffee and burgers at the finish (circa 12.30), all courtesy of 'The Hub at the Swan'. The Parish Council would like to thank The Hub at the Swan for their support, not just with the refreshments at the end of the morning but also for allowing the use of their industrial bins as Wiltshire Council have not confirmed any arrangements. Cllr Roberts will buy more bags to be on the safe side.
- iv. Notice of Vacancy running to 11<sup>th</sup> April. Due to the recent retirement of David Harbottle there is a vacancy on the Parish Council. The mandatory Notices have been on all the noticeboards for the last 3 weeks. The Clerk reported that she had not been contacted by anyone so far wishing to offer their time and expertise on the Parish Council. Cllr Roberts introduced Rob Coultard to the Council as he has agreed to stand as a co-opted member. Rob left the room whilst Cllr Roberts gave a brief background to the Council and proposed co-opting him after 11<sup>th</sup>. This motion was seconded by Cllr Hiskett with the majority of Cllrs in agreement.

-v. Info boards. Cllr Roberts reported that Martin Webb had the first information board nearly ready and was still collating further information. The second board will be for the Church. He also suggested they would look better on oak posts. Cllr Waight is helping to arrange funding for this by way of a donation from the Farmer Trust.

#### **19/046 Finance**

The Clerk reported that at the end of March, also the end of the financial year, the account stood at £12,021.41. There were two uncleared cheques in the system and this would reduce the figure by £307.02 leaving £11,714.39. The accounts are all prepared and ready for internal audit and should be signed in time for the AGM on 14<sup>th</sup> May. Before they can go on to the external auditors they require a Minute number as evidence that the Council have approved them. The dates for the 'Period of Exercise of Public Rights' are between 17<sup>th</sup> June and 26<sup>th</sup> July when anyone interested in the accounts may view them by appointment with the Clerk. The Clerk also stated that anyone wishing to view them at anytime of year may do so by appointment. Cllr D'Arcy-Irvine asked whether, in future, it would be possible for Councillors to be given an itemised breakdown of income & expenditure to cover the period since the previous meeting. Bank reconciliations are mandatory and the Council felt they were sufficient, this request was thought to be an unnecessary exercise and waste of resources.

#### **19/049 The Parish Hall**

Cllr Cliffe-Roberts had sent his apologies for not be able to attend, that there was nothing of any significance to report, he is still in negotiations with Wiltshire Council but hoped this might be resolved by and discussed at the next PHMC meeting to be held on 30<sup>th</sup> April.

#### **19/050 Roads and Highways**

The Clerk reported she had received an email from Richard Rogers, the new Community Engagement Manager, in conjunction with Andy Cole (Highways Engineer) regarding an extra amount of £8 million which will be available across the county from April 19 for a) Road Line marking, b) Ditching works (with a JCB), c) replacement of worn/illegible road signs and d) Blocked gullies that have not been cleared and were previously considered a low priority. The Clerk has responded to this with almost all the 'outstanding list' (handed over by David Harbottle before leaving) and she is awaiting a response. Cllr Roberts said he was hoping to meet the Parish Steward tomorrow (10<sup>th</sup> April) but had not yet heard from him. If he does, he will introduce him to Bridleway 8 off Water Lane and see if he will assist with some clearance of the debris that is piled up there (see minutes of 12<sup>th</sup> March, item 2, Public Questions 19/020.i).

#### **19/052 Correspondence**

-i. Cllr Roberts reported that he had received an email from Jeni Scott-Dalgleish regarding the Sams Charity Bike Ride which is taking place on the same day as The Priory gardens are open to the public. She is concerned about the extra traffic going through the village. Neither event is anything to do with the Parish Council. Signage for both events will presumably be displayed on the day, hopefully alerting everyone to take extra care on the roads.

-ii. The Clerk had been contacted by the Salvation Army asking if there was some ground where they might install a clothing bank. There are returns for doing this and they would be happy to discuss it all first however as the Parish Council does not own any available land in the village it was decided to decline the offer.

#### **19/054 Date of Next Meeting**

**Tuesday 14<sup>th</sup> May 2019 --- Annual General Meeting at 6.30pm in the Village Hall**  
**Annual Parish Meeting at 7.30pm in the Village Hall**

## **Enford Telephone Directory – Final Deadline 17<sup>th</sup> May 2019**

DUE TO THE GENERAL DATA PROTECTION ACT, WE CANNOT SIMPLY CARRY FORWARD DETAILS FROM THE PREVIOUS TELEPHONE DIRECTORY. EACH PERSON WISHING TO GO IN THE NEW DIRECTORY MUST REQUEST TO DO SO, EITHER BY EMAILING OR WRITING TO US.

Apologies to those who have tried to use the online form and been unable to do so. We have had some technical issues. As a result we are extending the **deadline for submitting all entries to Friday 17<sup>th</sup> May.**

### Electronic Details:

We would prefer to receive entries electronically to reduce the potential for typographical errors and the work involved for us volunteers. If you can use email but are unable to use the online form, please just email the information as detailed below to [enfordnewsletter@gmail.com](mailto:enfordnewsletter@gmail.com):

| Number (exclude STD code) and/or full mobile         | Surname (Capitals) | Forename(s) or Initial(s)      | Address (as much or as little as you want to see in the directory, excluding the county) | Postcode |
|--|--------------------|--------------------------------|--|----------|
| 345987<br><br>04444<br>777777<br><br>08888<br>555555 | SAMPLE             | H & K<br><br>Harry<br><br>Kate | House Name, 10 Street, This Place  | NN1 2NN  |

### Completed Manual Forms:

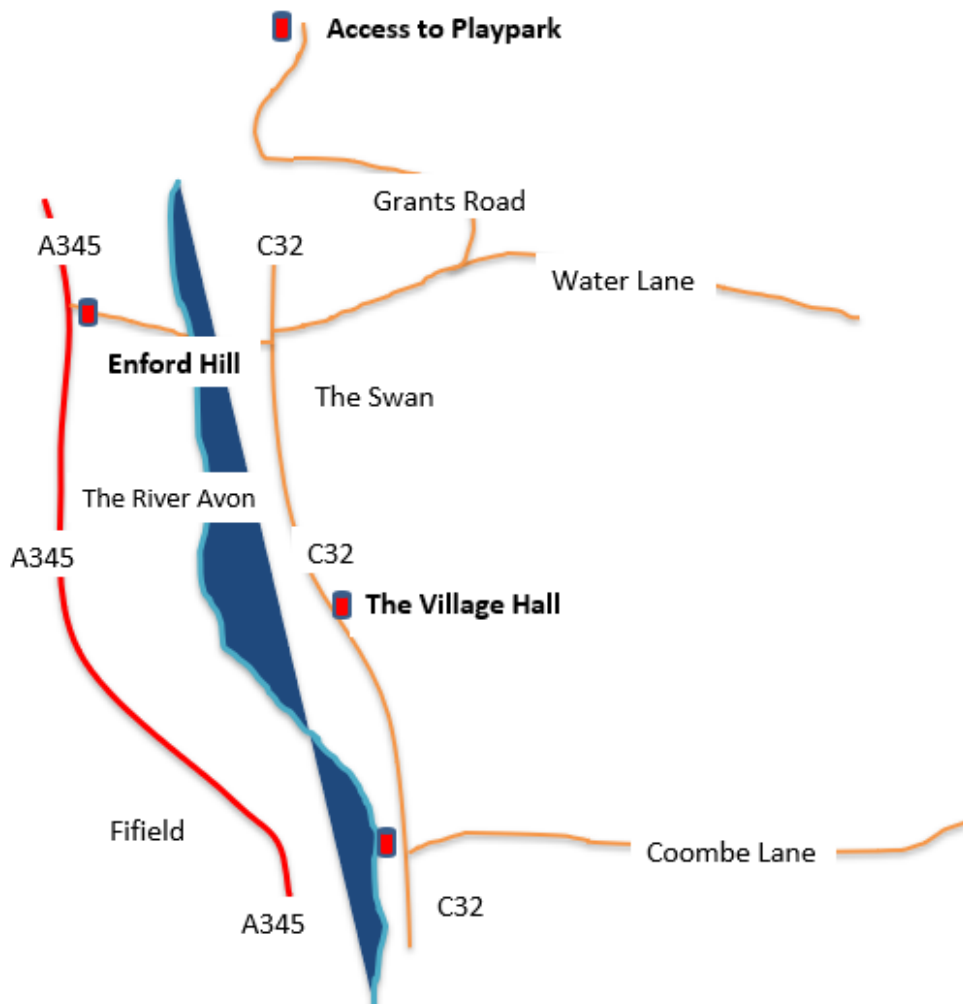
A yellow form was delivered with each newsletter in April. If you wish to be included in the Directory, please complete that form and drop it off at any of the locations below. If you cannot find the form, simply write out the details (as shown above), sign your note and again drop it off at one of the locations, **by 17<sup>th</sup> May.**

- ♦ Gay Monk, 15 Coombe Lane, SN9 6DF
- ♦ Jeni Scott-Dalglish, River Cottage, East Chisenbury, SN9 6AQ
- ♦ Jane Long, Beckenried, Longstreet, Enford, SN9 6BD

The decision as to whether there are enough entries to warrant a new publication of the Directory will be taken at the Committee meeting immediately following that date.



## ENFORD VILLAGE – DOG MESS BINS



This image represents the bins available for bagged dog mess in the village. They have been paid for by the Parish Council who also pay for their regular emptying. This is to try keep the kerbs, walks and paths etc. around the village as clean and pleasant as possible for everyone to enjoy.

This map is for representational purposes only and not to scale.

**Please clean up after your dog and use these bins provided.**

Thank you.



## Excerpt from a Thank You Letter from The Stars Appeal



"Thank you for raising a wonderful £180 from the Enford Jumble Sales for the Stars Appeal - Salisbury District Hospital's charity. Please find enclosed a certificate which we hope you will be able to display as a small token of our appreciation to everyone who helped make this donation possible. (Certificate on display in Village Hall).

People who support our hospital here in Salisbury, and its charity, the Stars Appeal, are helping us raise the £1million+ we need each year to continue our vital work.

## Thank you

### The Enford Community Fund

Funding is available to help projects/events in the Parish of Enford (which includes East and West Chisenbury, Coombe, Fiffield and Littlecott).

Applications for awards must be made to the treasurer, Amanda Farrow, by email or letter, no later than the first day of the award month (March and September).

[amanda.farrow@chisenbury.co.uk](mailto:amanda.farrow@chisenbury.co.uk) or 537 East Chisenbury.

The following guidelines will be followed in allocating funds:

1. Awards will be considered every 6 months in March and September.
2. Awards will be made for individual projects and are not designed to allow awardees to become reliant on the award on an annual/regular basis.
3. Awards will be made to causes that benefit the community and not specific individuals.
4. No awards will exceed £1,000.
5. For any award to be made, there must be agreement by at least 75% of the Committee.



### Cat Café

*I would like to thank my friends at the "Cat Café" for donating £500 to the Julia House Hospice in Devizes. We visited the hospice in April and as a result they have decided to donate another £500 in the next 6 months. Quite an achievement for 10-12 people.*

*Doreen Fay.*

## CLAIRE PERRY

Working hard for the  
Devizes Constituency

Claire Perry MP  
House of Commons  
London  
SW1A 0AA

01380 729358

[www.claireperry.org.uk](http://www.claireperry.org.uk)

[claire.perry.mp@parliament.uk](mailto:claire.perry.mp@parliament.uk)



I hold regular surgeries around the Constituency  
- please call or email to book an appointment

# Advertising

## Advertise in the Newsletter

✦ £22 per 1/8 page ✦ £48 per 1/3 page

✦ £60 per 1/2 page and ✦ £100 per full page  
for 10 issues



### WILTSHIRE WILLOW:

### LOGS AND FIREWOOD FOR SALE

Seasoned and split logs, kindling and firewood

Ideal for wood-burning stoves and open fires

\*Trailer loads for £85.00

\*Weekend bags for £20.00

Kindling on request.

To order your free delivery, please call Martin on 07788 429772

**DELIVER FREE WITHIN 5 MILE RADIUS OF ENFORD**



### *M NASH & P WILKINS*

*ALL LANDSCAPING WORK  
UNDERTAKEN*

*\*FENCING\**

*\*PATIOS\*PATHS\*PONDS\**

*\*BRICKWORK\**

*\*HEDGE CUTTING\**

*\*GARDEN CLEARANCE\**

*\*GRASS CUTTING\**

*Tel: MIKE 01980 635324*

## **MOTOR GARAGE LTD**

Servicing, MoT tests and Repairs for  
Classic Cars as well as Modern

Telephone: 01980 670348

[www.themotorgarage.co.uk](http://www.themotorgarage.co.uk)  
[enquiries@themotorgarage.co.uk](mailto:enquiries@themotorgarage.co.uk)

Netheravon, Salisbury, Wiltshire, SP4 9RH

## **MOBILE HAIRDRESSER**

**Ring Donna**

**on**

**07711 579403**

## **IAN JACOBS**

### WINDOW CLEANING

Traditional methods, domestic and commercial,  
Fascias, soffits & gutters,  
conservatory roofs cleaned. Sealed units replaced.

For a professional, reliable, friendly service  
call Ian on: **07917 105639** or **01980 671685**  
email: [imjacobs@hotmail.com](mailto:imjacobs@hotmail.com)



18 The Bluestone Centre, Sunrise Way, Solstice Park, Amesbury, Wiltshire,  
SP4 7YR

T: 01980 258472 E: [equidae-equineservices@outlook.com](mailto:equidae-equineservices@outlook.com)

## We sell a variety of

Equine Feed, Supplements and Health Care Products

Field and Stable Accessories

High Viz items

Equine and Small Animal Bedding

Poultry Feed, Oyster Shell and Grit

Dog and Cat Feed

Small Animal Feed

If you require something not in stock, let us know and we will try  
to get it for you.

## Also Available

Rug Wash and Reproofing Service

Horse Trailer Hire

Delivery can be arranged for larger orders

## Opening Times

Monday and Tuesday 5.00pm – 7.00pm

Wednesday 1.30pm – 7.00pm

Thursday and Friday 8.30am – 6.00pm

Saturday 9.00am – 5.30pm

Sunday 10.00am – 2.00pm

### A SELECTION OF BRANDS AVAILABLE

NAF - PURE FEEDS – BAILEYS – DENGİ – SPILLERS - DODSON & HORRELL - AL-  
LEN & PAGE THUNDERBROOK – SARACEN - TOP SPEC – MOLLIHAFF –  
CHUDLEYS – SKINNERS - PEGASUS – MENDIP - NATURAL FLAKE - NEDZ BED  
– EASIBED – AUBICHICK - BLISS – PILLOW WAD



# *body* fitness studio **works**

Abbey Square Amesbury Tel:- 01980 625050

Affordable Personal Training !!

**Are you bored at the gym?**

**Are you tired of being left on your own?**

**Do you want better results?**

**You're not on your own at our club!**

***We teach, motivate and help you achieve  
your desired results***

**CALL US NOW ON: 01980 525050**



**Red Lion Freehouse**  
& TROUTBECK GUEST HOUSE



### Prix Fixe

Our fab Prix Fixe menu is still available Wednesday—Friday lunch times & Wednesday, Thursday evenings!

2 courses for £20

3 courses for £25

We also offer sensible 'lunchtime sized' glasses of paired wines for each course

We would love to remind everyone that the pub is now open Wednesday – Sunday

01980 671124

## ENGLISH COUNTRY GARDENS

Garden & lawn maintenance, hedge and tree work, fences, driveways & weed control  
Garden waste removed.

Qualified, fully insured and licensed, 23 years experience

### WE SUPPLY

Mushroom compost, manure, Pro Grow, woodchips, gravel, stone & scalplings

Loads of logs by size: £80, £140, £180

All seasoned & dry native species.

Can stack

Bags of kindling: £4.50 or 5 bags for £20

LOGS NOW  
AVAILABLE IN  
1& 2-TON BAGS  
For convenient  
outside storage

Call or text Nick on 07835299247

Free Delivery

## Avon Security

MASTER LOCKSMITHS

### Engraving Service Now Available

- > Brass
- > Plastics
- > Aluminium
- > Glass
- > Trophies
- > Gifts

### Free Advice & Quotations On Securing Your Property & Belongings

Key Cutting  
Locks Supplied & Fitted  
Access Control  
Safes  
PVCu Locks  
Master Key Systems  
Lock Repairs  
Door Furniture & Ironmongery  
Transponder Car Keys  
Keys To Code  
Watch Batteries & Straps  
Emergency Call Out Service



**01980 626000**

21, Salisbury Street, Amesbury, Wiltshire, SP4 7AW  
**www.avonsecurity net**



# Digger & Mojo

WOODBOROUGH

DECORATIVE ANTIQUES &  
VINTAGE EMPORIUM  
WORKSHOPS & CHRISTMAS GIFTS



*We restore Antiques + revamp your Furniture*  
*Mending • Painting • Reupholstery*



Shop/Office: 01672 851 510  
Email: [ask@diggerandmojo.com](mailto:ask@diggerandmojo.com)  
[www.diggerandmojo.com](http://www.diggerandmojo.com)

*"IT'S A KIND OF  
MAGIC"  
Salisbury Life Magazine*

WOODBOROUGH GARDEN CENTRE  
WOODBOROUGH, PEWSEY, WILTSHIRE, SN9 5PF

OPEN 7 DAYS 11am - 5pm





## Plumbing, Heating, Electrical & Renewable Energy

Solar Thermal & PV, Air & Ground Source Heat Pumps, Ventilation, Boiler Replacements. Domestic, Commercial & Industrial Contractors. Family Business Established 1970.

### Free Estimates and Advice:

Tel: 01980 670667 Fax 01980 670811

[www.rgvengineering.co.uk](http://www.rgvengineering.co.uk) [info@rgvengineering.co.uk](mailto:info@rgvengineering.co.uk)



## MODERN & TRADITIONALLY DESIGNED MEMORIALS

**M J SLY**

*Monumental Stonemason*

*New Memorials, Additional Inscriptions  
Restorations, Free Home Visits  
Free Brochure*

**Marlborough (01672) 516797**

Email: [martin@mjsly.co.uk](mailto:martin@mjsly.co.uk)

Website: [www.mjsly.co.uk](http://www.mjsly.co.uk)

*Workshop & Showroom at Pelham Court,  
London Road,  
Marlborough, Wiltshire*

Oil Boiler Servicing  
Commissioning & Repairs

**Call Graham C Brown & Son  
01980 622737**

Fully Qualified



Fully Insured

Experienced Technician

**SEAN DEVINE  
PAINTER & DECORATOR**



**Free estimates.**



**Fully insured.**

**For local professional service call:**

**07870 454884 or 01980 630864**

**email: [sean.devine2@outlook.com](mailto:sean.devine2@outlook.com)**

## "PAMCAKES"

*Bespoke Cakes for your special  
occasions (any age group).  
Traditional and 3D, cupcakes and  
some Wedding Cakes. See my FB  
page "pamcakes of netheravon"  
for more details & website  
[pamcakesofnetheravon.co.uk](http://pamcakesofnetheravon.co.uk)  
[pamcakes@write.me](mailto:pamcakes@write.me) or call  
07919656141*



*Kate Robinson Flowers*

*Award winning wedding and  
event florist.*

*Stylish and elegant arrangements  
for venues, church and bridal party*

*Call Kate on 07906 580361*

*Or go to:*

*[www.katerobinsonflowers.co.uk](http://www.katerobinsonflowers.co.uk)*

**RH Hensel**  
FASHION DESIGN

Bespoke Fashion Design and  
Dressmaking for any occasion.

For more details contact

Ramona Edwards

[rhensel85@gmx.de](mailto:rhensel85@gmx.de) // 07827597084

**KD WORSDELL**

**Carpentry & Joinery  
Building Works & Maintenance  
Bathrooms and Kitchens**

**Please Call  
01980 630545  
Or  
07759 586162**



# AKER

FIRE & SECURITY

INTRUDER, FIRE, CCTV, CARBON MONOXIDE &  
SMOKE ALARMS, GATE AUTOMATION

We can offer a one off service or fault finding visit without  
the need for a long term contract call 0751535875 or email

[info@akerfireandsecurity.co.uk](mailto:info@akerfireandsecurity.co.uk)



## Tina's Hairdressers

High Street, Netheravon  
Unisex Salon

Tel: 01980 670628

Tue 9-5 Wed 9-2 Thurs 1-7  
Fri 9-6 Sat 8.45-2

TIPZ & TOEZ

nails now available

Appointments not always necessary

## Bits & Pieces (Durrington Ltd)

**BUILDING, GARDENING & DIY**

**PETS, PANELS, AGGREGATE**

37 - 39 Bulford  
Road, Durrington  
Wiltshire SP4 8DL

Tel: 01980 655552  
Fax: 01980  
652351

Proprietors: P & M Conn

## Southern Chimney Services

CHIMNEY SWEEPING & SURVEYS

POTS & COWLS FITTED

FLUE LINER INSTALLATIONS

BURNER INSTALLATION

FOR RATES & APPOINTMENTS

CALL PETE ON 07432 899715

01672 811650

[www.southernchimneyservices.co.uk](http://www.southernchimneyservices.co.uk)

[southernchimneyservices@gmail.com](mailto:southernchimneyservices@gmail.com)



## S.O. CHIMNEY SWEEPING

- ♦ Camera Surveys
- ♦ Birds Nests Removed
- ♦ Fully Insured
- ♦ NCSSA Registered
- ♦ Friendly Local Service
- ♦ Cowls Fitted

Call Sean on 07881 206536

[seanoades@hotmail.com](mailto:seanoades@hotmail.com)

## TIM BUCKLAND BOILER MAINTENANCE

FOR SERVICE AND BREAKDOWNS

*Friendly and efficient service*

*Wide stock of boiler spares in stock*

**VERY COMPETITIVE PRICES**

*Also AGAs and RAYBURNs serviced*

Tel: 01980 551386

## Valleywide Taxis of Pewsey

now has a lady driver in  
West Chisenbury

8 seater and wheelchair  
accessible vehicles available

\*FREEPHONE\* 0800 170

7575 to book

Advance bookings can also be  
made via our Facebook Page

## Advertise here for only

✦ £22 per 1/8 page ✦ £48  
per 1/3 page

✦ £60 per 1/2 page and ✦  
£100 per full page  
for 10 issues

Call Jeni Scott-Dalglish  
on 01980-670210 or 07779  
986920

# VILLAGE HALL AND RECREATION GROUND



## Contact Details:

**Booking Officer** 01980 670501  
**enfordvillagehall@btinternet.com**  
**www.enfordnewsletter.org**

**Chairman** 01980 670501  
**Grounds Officer** 01980 670210  
**Maintenance Officer** 01980 670526

**Private Parties**  
**Planning a children's party?**  
**Celebrating a special birthday or anniversary?**  
**The hall is the perfect venue for weddings and parties!**

| Day  | Activity  | Time  | Contact   |
|------|---|---|---|
| Mon  | Yoga Beginners<br>Yoga Intermediate               | 6.00pm – 7.15 pm<br>7.30pm—9.00pm                 | Emma Petitt 01980 670510<br>yoga@emmapetitt.co.uk   |
| Tues | Enford Film Club                                  | 4th Tuesday in the month<br>Doors open<br>7.00 pm | Judy D'Arcy-Irvine 01980 670501   |
| Wed  | Short Mat Bowls                                   | 7.30 pm – 10.00pm<br>October to March             | David Spencer 01980 670526<br>spencersgb@yahoo.co.uk  |
| Thu  | Pilates   | 8.45 am – 9.45am                                  | Nicci Caswell 01980 625245<br>nicci@thecaswells.uk  |
| Thu  | Camera Club                                       | 8.00 pm – 9.00 pm<br>1st Thursday in the month    | Martin Webb 01980 670537<br>webb14@btinternet.com   |
| Thu  | Gardening Club                                    | 7.00pm – 9.00 pm<br>2nd Thursday in the month     | Fanny Middleton 01980 671645<br>fannysurtees@btinternet.com   |
| Fri  | Yoga  | 6.30 pm - 8.30 pm                                 | Andi Baburske<br>Mob 07935 072893<br>email <a href="mailto:jackiebrown_2@gmx.de">jackiebrown_2@gmx.de</a>   |
| Sat  | Children's Football<br>Coaching<br>Sessions       | 10.00am -11.00 am<br>Recreation Ground            | Steve Todd 01980 670934<br>STODD@qinetiq.com  |
| Sun  | Netheravon<br>Wanderers Foot-<br>ball Club (NWFC) | Home matches<br>10:30am Kick off                  | Marc Williams 07500 785116<br>email:<br><a href="mailto:sundayclub2019@yahoo.com">sundayclub2019@yahoo.com</a><br>Facebook: Netheravon<br>Wanderers Football Club |

## VILLAGE COMMITTEES

### PARISH COUNCIL

|                      |  |                     |
|----------------------|--|---------------------|
| <b>Chairman</b>      | <b>Richard Roberts</b>                                       | <b>671055</b>       |
| <b>Vice Chairman</b> | <b>Peter Cliffe-Roberts</b>                                  | <b>671676</b>       |
| <b>Parish Clerk</b>  | <b>Elizabeth Harrison</b>                                    | <b>670034</b>       |
| <b>Councillors</b>   | Jane Young   | <b>670532</b>       |
|                      | Anthony D'Arcy Irvine (Rep Tidworth Area Board/Village Hall) | <b>670501</b>       |
|                      | Parochial Church Council)                                    | <b>670510</b>       |
|                      | Bruce Waight   | <b>670113</b>       |
|                      | Pat Holdway  | <b>671792</b>       |
|                      | Mark Hiskett (PROW)  | <b>670955</b>       |
|                      | Vick Exley (Police & Neighbourhood Watch)                    | <b>07870 189235</b> |
|                      | Diane Christie-Rundle  | <b>671769</b>       |
|                      | Peter Cliffe-Roberts (Planning Committee)                    | <b>671676</b>       |

### NETHERAVON SCHOOL

|                              |                   |
|------------------------------|-------------------|
| <b>Chairman of Governors</b> | Mrs Dot Georgeson |
| <b>Head Teacher</b>          | Ms Lisa Tight     |

### NEWSLETTER

|                           |                       |
|---------------------------|-----------------------|
| <b>Chair</b>              | Diane Christie-Rundle |
| <b>Vice Chair</b>         | Jane Young            |
| <b>Secretary</b>          | Ann Houghton          |
| <b>Treasurer</b>          | Roz Perry             |
| <b>Advertising</b>        | Jeni Scott-Dalgleish  |
| <b>Village Hall Rep</b>   | Jacqui Elkins         |
| <b>Parish Council Rep</b> | Jane Young            |
| <b>Compiler:</b>          | Sue Cosgrove          |
| <b>Committee Member</b>   | Gay Monk              |

### PAROCHIAL CHURCH COUNCIL

|                         |  |
|-------------------------|--|
| <b>Church Wardens</b>   | Henry Middleton<br>Sue de Candole  |
| <b>Treasurer</b>        | Tom Hunter   |
| <b>Secretary</b>        | Tom Hunter   |
| <b>Council Members:</b> | Mary Burdick<br>Anastasia Dubovic,<br>Fanny Middleton<br>Tim Edwards<br>Michael Whitaker |

### VILLAGE HALL

|                                     |                                       |
|-------------------------------------|---------------------------------------|
| <b>Chairman and Booking Officer</b> | Judy D'Arcy-Irvine<br><b>(670501)</b> |
| <b>Vice Chairman</b>                | <b>Vacant</b>                         |
| <b>PC Rep</b>                       | A D'Arcy-Irvine                       |
| <b>Secretary</b>                    | <b>Vacant</b>                         |
| <b>Camera Club</b>                  | Jane Young                            |
| <b>Newsletter</b>                   | Jacqui Elkins                         |
| <b>Property Officer</b>             | David Spencer                         |
| <b>Grounds Officer</b>              | Hamish Scott-Dalgleish                |
| <b>Gardening Club</b>               | Rosemary Cox                          |
| <b>Short Mat Bowls</b>              | David Spencer                         |
| <b>Junior Football Club</b>         | Ollie Stagg                           |
| <b>Youth Club</b>                   |                                       |

| <b>YOUR DIARY May 2019 (For regular Village Hall dates, see page 34)</b> |     |   |
|--|-----|---|
| 1st  | Wed | Exercise night 6:30pm V. Hall/Darts' night 8:30pm The Swan  |
| 2nd  | Thu | <b>Black box, Blue bin</b> /Hub in the Pub 9:30am The Swan/<br>Camera Club V. Hall 8pm  |
| 3rd  | Fri | Youth Club Phoenix Hall, Netheravon 6pm/Yoga 6:30pm V. Hall   |
| 4th  | Sat | Youth football 10am V. Hall but see p34   |
| 5th  | Sun | Holy Communion, 9.30am Enford Church  |
| 6th  | Mon | Little Phoenix Toddlers, 9am, Phoenix Hall, Netheravon/<br>Netheravon Library 1pm-7pm/Bridge & Whist Phoenix Hall, N'avon 2pm |
| 7th  | Tue | SwanCraft 10am The Swan/ Quiz Night 9pm The Swan  |
| 8th  | Wed | Exercise night 6:30pm V. Hall/Darts' night 8:30pm The Swan  |
| 9th  | Thu | <b>Household Waste</b> /Hub in the Pub 9:30am The Swan/<br>Gardening Club Outing 7pm  |
| 10th   | Fri | Mobile Library 3:40pm Water Lane/<br>Youth Club Phoenix Hall, Netheravon 6pm/Yoga 6:30pm V. Hall                              |
| 11th   | Sat | Youth football 10am V. Hall but see p34/<br>Spring Fayre 12noon, Netheravon School Field                                      |
| 12th   | Sun | Team Service, Enford 10:30am  |
| 13th   | Mon | Little Phoenix Toddlers, 9am, Phoenix Hall, Netheravon/<br>Netheravon Library 1pm-7pm/Bridge & Whist Phoenix Hall, N'avon 2pm |
| 14th   | Tue | SwanCraft 10am The Swan/PC AGM 6:30pm, PC Meeting 7:30pm V. Hall/<br>Quiz Night 9pm The Swan                                  |
| 15th   | Wed | Exercise night 6:30pm V. Hall/Darts' night 8:30pm The Swan  |
| 16th   | Thu | <b>Black box, Blue bin</b> /The Hub Cafe 10am The Swan  |
| 17th   | Fri | <b>Phone Directory Entry Deadline</b> /<br>Youth Club Phoenix Hall, Netheravon 6pm/Yoga 6:30pm V. Hall                        |
| 18th   | Sat | Youth football 10am V. Hall but see p34   |
| 19th   | Sun | Breakfast Church 9:30am Enford Church   |
| 20th   | Mon | Little Phoenix Toddlers, 9am, Phoenix Hall, Netheravon/<br>Netheravon Library 1pm-7pm/Bridge & Whist Phoenix Hall, N'avon 2pm |
| 21st   | Tue | SwanCraft 10am The Swan/Quiz Night 9pm The Swan   |
| 22nd   | Wed | Exercise night 6:30pm V. Hall/Darts' night 8:30pm The Swan  |
| 23rd   | Thu | <b>Household Waste</b> /Hub in the Pub 9:30am The Swan  |
| 24th   | Fri | Youth Club Phoenix Hall, Netheravon 6pm/Yoga 6:30pm V. Hall   |
| 25th   | Sat | Youth football 10am V. Hall but see p34   |
| 26th   | Sun | Evensong, 6pm Enford Church   |
| 27th   | Mon | Little Phoenix Toddlers, 9am, Phoenix Hall, Netheravon/<br>Netheravon Library 1pm-7pm/Bridge & Whist Phoenix Hall, N'avon 2pm |
| 28th   | Tue | SwanCraft 10am The Swan/Film Club V. Hall 7pm for 7:30pm/<br>Quiz Night 9pm The Swan  |
| 29th   | Wed | Exercise night 6:30pm V. Hall/Darts' night 8:30pm The Swan  |
| 30th   | Thu | <b>Black box, Blue bin</b> /Hub in the Pub 9:30am The Swan  |
| 31st   | Fri | Youth Club Phoenix Hall, Netheravon 6pm/Yoga 6:30pm V. Hall   |