

# Enford Newsletter

What's Happening In and Around Enford



## NOVEMBER 2019

**Enford Remembrance Day Service - 9am Sun 10 November**  
**Meet at the All Saints Church Lychgate**  
**(within Church if raining)**  
**All are welcome**



## USEFUL NUMBERS

### **EMERGENCY SERVICES**

#### **DOCTORS**

DURRINGTON	Avon Valley Practice Surgery	01980 652378
DURRINGTON	Cross Plains Surgery	01980 652221
UPAVON	Avon Valley Practice Surgery, Fairfield	01980 630221

#### **HOSPITAL**

SALISBURY DISTRICT HOSPITAL	01722 336262
-----------------------------	--------------

#### **POLICE**

POLICE	101
--------	-----



#### **OTHERS**

ELECTRICITY	105
ENVIRONMENTAL AGENCY	0800 80 70 60
FLOOD LINE	0345 988 1188
GAS	0800 111 999
PLAINWATCH	01980 674700

#### **DURRINGTON LINK**

LINK (Durrington & District)	01980 594857
------------------------------	--------------

#### **SCHOOLS**

DURRINGTON, Avon Valley Secondary School	01980 652467
FIGHELDEAN, St Michael's C of E Primary	01980 670268
NETHERAVON, All Saints' C of E Primary	01980 670339
RUSHALL, Rushall C of E Primary	01980 630360
PEWSEY, Pewsey Vale Secondary School	01672 565000

#### **WILTSHIRE COUNCIL**

BIN COLLECTIONS	0300 456 0102
-----------------	---------------

<http://www.wiltshire.gov.uk/rubbish-collection-day>

HOUSEHOLD RECYCLING CENTRES (HRC)

<http://www.wiltshire.gov.uk/household-recycling-centres>

### **WHAT CAN YOU DO TO REDUCE CRIME ON SALISBURY PLAIN?**

If any crime is taking place call 999 and do not under any circumstances challenge the offenders.

Report suspicious activity to PLAINWATCH (01980 674700) or [PLAINWATCH@landmarc.mod.uk](mailto:PLAINWATCH@landmarc.mod.uk). The more information received the better, e.g. time, place, vehicle registration, description of individuals and vehicles.

#### **Health and Safety reminder for all Military Training Areas and Ranges:**

Do not touch or tamper with Military debris.

Wash your hands before you eat.

Clean your footwear before you enter your car or home.

## CONTENTS

Useful Telephone Numbers	2
Crime Reduction	
Next Newsletter Deadline	3
Team Rector's Musings	4
Military Wives Choir	
Church Services/Parish News	5
Cancer Research Fair/Thank Yous	6
Remembrance Sunday Curry Lunch	7
Condolences	
Film Club/SPTA news	8
Gardening Club/Youth Club	9
Camera Club/Alzheimer Society plea	10
Defibrillator	11
Bridge & Whist Group/Swan Craft	
St Francis Christmas Fair	12
Hub in the Pub	
PC Meeting dates/Mobile Library	13
November Novelties	14
Age UK plea/Victim Support/Darts	15
Fun Football	
Toddler Group/Netheravon Library	16
School Readers	
Alzheimer's Carer Support	17
Christmas Wreath Workshops	
Ladies Christmas Supper	18
Army Rebasing Newsletter	19
Parish Council Minutes	20-21
Netheravon School Christmas Fair	22
Santa's Visit/PHMC AGM	23
Enford Church Christmas Fayre	24
Location of Dog Mess Bins	25
Enford Community Fund/Advertising	26
Advertising (including local MP)	26-33
Village Hall Diary	34
Village Committees	35
November Diary	36
	3

**The next  
Newsletter deadline is  
FRIDAY  
15th November 2019**

**Emails are preferred** but all items for inclusion, whether they are handwritten, typed or via e-mail, **MUST be submitted by the deadline date.**

These articles may be handed in to any Newsletter Committee member.

**Please send e-mails to  
enfordnewsletter@gmail.com**

Enford Newsletter Committee reserves the right to reject or omit from publication any material that is considered by majority of Committee Members to be detrimental to any person or which is not in the best interest of the community as a whole.

All letters and articles must be signed, but the Committee will withhold the name of the writer if this is requested when submitted.

## Contributors!



**the early  
deadline  
for the  
next  
edition  
which will cover  
both December 2019  
and January 2020**

## A word from Philip Bromiley our Team Rector:



### Making contact

A vicar visited an elderly lady from his congregation. As he sat down he noticed a bowl of peanuts on the coffee table. 'May I have a few?' he asked. 'You're more than welcome,' the lady replied. After an hour, as the vicar stood up to leave, he realised he had scoffed the lot. 'I'm terribly sorry for eating all your peanuts,' he said. 'I only meant to have a few.'

'Oh, that's all right,' came the reply. 'Ever since I lost my teeth all I can do is suck the chocolate off them.'

I wonder if you know somebody that would appreciate a visit or making contact with church?

Did you know that the church often brings Holy Communion to the homes of those who are housebound? We have trained lay pastoral assistants and members of the ministry team who are deeply caring and want to help people stay connected to church.

Clergy are always available for a cuppa and peanuts with the chocolate on them!

The joy of this ministry is that it expresses a truth that God's presence isn't to be kept under lock and key, for the chosen few... it is for everyone who wants it. Getting to church is difficult for some people, so Church can come to them.

Perhaps it is possible for you could help them come to church? Bring them along one Sunday, for a special service? Experiencing fellowship, humour, hymns, meaning and friendship is part of the church's calling in this part of the world to be 'praying churches, serving communities'.

## SALISBURY PLAIN MILITARY WIVES CHOIR

In Concert at St.Michael & All Angels  
Church, Figheldean

Thursday November 14<sup>th</sup> 2019  
7.15 for 7.30 pm



**There will be a wide variety of nibbles available with a restaurant layout.  
*Please bring your own favourite tippie, glasses and plenty of banter!***

**For catering and layout purposes, please reserve your seat (s) as soon  
as possible with Trevor on:**

**01980 670153 or trevorwoodbridge\_5@outlook.com**

Suggested donation on the door on the night:

**Adults £10 / Under 15's £4.00**

**With an half hour interval there will, of course, be the inevitable raffle!**

## ALL SAINTS CHURCH, ENFORD Services



### November

3rd Team Service in Durrington, 10:30am  
 10th REMEMBRANCE SERVICE –  
 Outdoor service at the Lychgate 9am  
 17th Breakfast Church, 9:30am  
 24th Evensong, 6.00pm

### December

1st Holy Communion, 9.30am Enford Church  
 8th Team Service, Enford 10:30am  
 15th Carols and Crib Service (with  
 Breakfast) 9.30am Enford Church  
 22nd Evensong, 6.00pm  
 24th Midnight Mass 11:30pm  
 25th Christmas Day Communion 9:30am  
 29th Team Service, Figcheldean 10:30am

**More information, help, details of Services in the 7 Avon Valley churches and  
 Minutes of PCC meetings can be found on the website at  
[www.avonriverteam.org.uk](http://www.avonriverteam.org.uk)**

### PARISH NEWS

We are looking forward to seeing many of you on 10<sup>th</sup> November 2019 at 9am for our special **Remembrance Service** at the Lychgate. Do come if you are able – this is always a rather special and well attended occasion.

Please note that due to remembrance services in November there will not be a Holy Communion on the 3<sup>rd</sup> of November, but a Team Service in Durrington instead.

Our annual **Christmas Fayre** returns on 30<sup>th</sup> November 2019 from 1pm till 4pm – more details in the newsletter. It should be great fun!

Have you had one of our amazing bacon butties at the **Breakfast Church**? It takes place every third Sunday of the month – do come.

December is not far off – please take note of our services for this busy month above.

Enford church has wonderful open spaces and is an ideal place to host club events, meetings, and parties - please contact [enfordpcc@yahoo.com](mailto:enfordpcc@yahoo.com) if you would like to discuss a possible booking. Kitchenette and WC facilities provided.



### Don't Forget!

**The Church is open daily from 9.30am to 4.30pm.  
 For any variation on this please call 670738  
 the night before.**

**Stonehenge & Pewsey Vale**



**Our 21<sup>st</sup> Christmas Fair**  
**Bouverie Hall, Pewsey SN9 5QE**  
**Saturday 9th November 2019**

10 am – 3 pm

Free Entrance

But all donations gratefully received

Enjoy the shopping experience, have some fun  
and help to beat Cancer at the same time

*Sponsored by:*

**MANNINGFORD CROFT  
MACLAINE**



On the 28th September a Jumble sale was held in the memory of Josie Young where an amazing £450.50 was raised. This will go towards the cost of a headstone for Josie.

We would like to say a massive thank you to everyone who donated items, helped on the day and all those that attended the Jumble sale making this possible.

Thank you all for your kindness and support.

*Josie's family*



Huge thanks to two of our dedicated Newsletter Distributors, Lowenna Harbottle and Frank Horsford, who have decided to stand down after many years of delivering the newsletter come rain or shine.



A huge THANK YOU to Mandy Farrow for all her hard work and amazing organisational skills providing Enford Parish with the most spectacular Halloween/Firework display. Mandy has worked tirelessly for the benefit of the Community and it really is very much appreciated.





The Army's National Charity

## **In Aid of Army Benevolent Fund**



The Army's National Charity

### **REMEMBRANCE SUNDAY SUNDAY 10th NOVEMBER 2019 12.00 MIDDAY**

**The Annual Curry Lunch is again being held in  
ENFORD VILLAGE HALL**

**NB An alternative main course and/or vegetarian option can  
be arranged instead of Curry**

**For tickets please contact:**

**Tel: 01980 671307 or 01980 670501**

**Email: [enfordvillagehall@btinternet.com](mailto:enfordvillagehall@btinternet.com)  
or [rhinob@tiscali.co.uk](mailto:rhinob@tiscali.co.uk)**

***Cheques to be made out to ABF The Soldiers' Charity***

**Book early to avoid disappointment as numbers are limited!**

**Tickets £25 per person and includes a Glass of Wine on arrival**

**Catering provided by Emma Harrison**

**Bar available**

**Please let us know any dietary requirements and / or  
if an alternative main course is required**



We're sorry to report the sad passing of  
Mavis Goodship,  
a long-term resident of Enford and more  
recently, Haxton.  
Our thoughts are with Gloria, Linda, Graham  
and all Mavis' family.

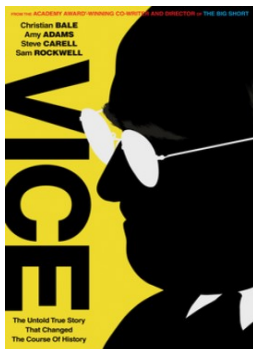


## ENFORD VILLAGE HALL FILM CLUB



**Tuesday November 26th**

### **“Vice”**



Written and directed by Adam McKay, “Vice” is an American biographical comedy-drama film. Former US Vice President Dick Cheney, is played by Christian Bale.

While the film starts at the point of the US responding to the attacks on September 11th 2001, the film follows Cheney on his path to become the most powerful Vice President in American history.

Doors open at 7.00pm with the bar open until 7.30pm when the film starts.

**Tickets £5**

Please book in advance if possible to help with the administration!

**Drinks available from the Bar**

NB Film Club is generally held on the 4th Tuesday of the month., however, **there will be no film club in December**

Possible future titles : “Downton Abbey” (of course!), “Vita & Virginia”, “Tolkien”, “All is True”, “Apollo11”, “First Man”, “Mary Queen of Scots”, “Official Secrets”, “Cats”, “All at Sea”, “Angel Has Fallen”, “42nd Street”, “Ready or Not”, “Red Joan”

**We always need your help in choosing films – please let us know of any films friends have recommended! Would love to hear your suggestions.**

**Lifts can be arranged for anyone who would like to come – so do let us know if you would like to be collected and taken home.**

**If you wish to join the Mailing List, would like to book Tickets, or need a lift please contact 01980 670501 or email [enfordvillagehall@btinternet.com](mailto:enfordvillagehall@btinternet.com)**

### **SPTA NEWS**

For Salisbury Plain Training Area News, giving times of live firing, current and upcoming exercises go to

<https://www.gov.uk/government/publications/salisbury-plain-training-area-spta-newsletter>





## ENFORD GARDENING CLUB



**Thursday 14th November 2019 7.00 pm**

### **Roger Hiron (the Plant Doctor) *The Winter Garden***

Roger is an expert on plants and garden design, formally training at Pershore College of Agriculture followed by 35 years of experience overall including 27 years of speaking experience. He has appeared on Radio Northamptonshire "over the garden fence" and regional gardener's question time.

In the talk Roger explains how the winter garden works and gives many ecology tips to look after wildlife. There will be lots of relevant plants for sale including some you may never have come across.

**Do come and join us. All are very welcome.**

Lifts can be arranged, please ask.

Cost £4.00

Plants for sale/coffee/tea/raffle.

As always meetings are at **Enford Village Hall, SN9 6DD.**

**Time 6:45 pm for 7.15 pm**

**NB There is no meeting in December, but January's meeting will be the AGM and Social on Thursday 9<sup>th</sup> January 2020.**

Further details from Fanny Middleton, 01980 671645,

email: [fannysurtees@btinternet.com](mailto:fannysurtees@btinternet.com)



### **Enford & Avon Valley Youth Club**

**Join us every Friday 6pm-8pm Phoenix Hall Netheravon**



## Enford Camera Club



**Thursday 7th November 2019 8.00pm to 9.30pm**

**at Enford Village Hall, SN9 6DD**

**Tickets £3 including free refreshments.**

**To reserve a seat, please**

**e-mail [enfordcameraclub@btinternet.com](mailto:enfordcameraclub@btinternet.com)**

The next meeting of Enford Camera Club will be at 8.00pm on Thursday 3<sup>rd</sup> October at Enford Village Hall. The show and tell theme this month will be 'Autumn Colours'



**The Enford  
Camera Club  
2020 Calendar.  
On Sale now!  
Only £5 each**

The camera club charge only £3 per evening. You don't have to join the club, just turn up for the night.

**Contact [enfordcameraclub@btinternet.com](mailto:enfordcameraclub@btinternet.com) for more information.**



### **Do you have some spare time to get involved in a volunteering opportunity with Alzheimer's Society?**

The charity is looking for locals ready to take up a fun, friendly, super-flexible volunteering opportunity, with its Side by Side service.

Volunteers will be paired with someone with dementia, so they can help them keep on doing the things they love – and try new things too.

Loneliness is a real problem for people with dementia, yet one of the most important things for those affected is to remain part of their community and continue to do the things they love – from badminton to ballroom dancing,

Alzheimer's Society is encouraging people to do more with Side by Side. From watching a movie, to catching a fish, do something you love or try something new. Or if it suits you better, you can volunteer on the Side by Side phone line.

**Do more. Explore more. Enjoy more. Sign up for Side by Side.**

**Visit [alzheimers.org.uk/sidebysidevolunteer](http://alzheimers.org.uk/sidebysidevolunteer) or**

**call Clare Lucas, Alzheimer's Society's Volunteering Officer, on 01249 443469 to find out how to get involved.**

## ENFORD DEFIBRILLATOR

The defibrillator is in a yellow box on the wall of

Hill House, 9 Longstreet, SN9 6DD

Grid Ref SU142515.

It is located in the centre of Enford 25m north of The Swan next to the parish notice boards.

If you think you need to use the defibrillator call 999.  
The Emergency Service will give you the code to get into the cabinet.

YOU CAN READ MORE ABOUT IT AT [WWW.ENFORDNEWSLETTER.ORG](http://WWW.ENFORDNEWSLETTER.ORG) WHERE YOU



**CONTRACT BRIDGE/WHIST GROUP**  
**THE PHOENIX HALL, NETHERAVON**  
 EVERY MONDAY AFTERNOON 2-4pm  
 £2 PER SESSION. TEA/COFFEE INCLUDED.  
 NO JOINING FEE. CAKES ACCEPTED!



WE'RE HERE FOR BEGINNERS TOO. TUITION BOOKS FOR SALE @£2.50.

EXPERIENCED PLAYERS WELCOME TO HELP TEACH BRIDGE TO BEGINNERS.  
 THIS IS A FUN GROUP WHO PLAY FOR ENJOYMENT.

EXPERIENCED PLAYERS ARE ALSO WELCOME TO BRING A 4SOME (AND A TABLE) IF YOU  
 HAVE FRIENDS WHO PLAY REGULARLY.

**Organiser: Alan Wood TEL: 01980 671265**



## Swan Craft

Do you enjoy making and creating?

If you enjoy hobbycraft,  
 be it with wool, fabric, beads, felt, paper etc.  
 then please come and join us at The Swan on Tuesday mornings  
 10.00am - 12.00noon

Any craft medium you may be interested in will be very welcome.  
 Feel free to bring along any samples of your creations to show and  
 share (or just yourself).

Anybody who may be slightly interested is more than welcome!

**For more information contact Jacki Brightman—01980 671598**





**ST FRANCIS  
CHRISTMAS FAIR 2019**

**THURSDAY 14th NOVEMBER**  
**11AM - 6PM**

**OVER 40 STALLS**  
**CHARITY RAFFLE**

ST FRANCIS SCHOOL,  
MARLBOROUGH ROAD, PEWSEY,  
WILTSHIRE, SN9 5NT

ENTRANCE: ADULTS £3.00, CHILDREN FREE  
[WWW.ST-FRANCIS.WILTS.SCH.UK](http://WWW.ST-FRANCIS.WILTS.SCH.UK)



*Join us for*

**HUB IN THE PUB**

*at The Swan, Enford*  
*every Thursday*

**9.30AM – 11.30AM**  
**Bring family, a friend,  
your baby or just you!**

*If you need a gift to or from The Hub  
please call the pub on 01980 670338*

*If you would like to bake a cake, on a  
rota basis, we'd love to hear from you!*

## **Dates for Enford Parish Council Meetings in 2019 and 2020**

Meetings are held in the **VILLAGE HALL** and start at **7.30pm** unless otherwise stated.

<b>DATE:</b>	<b>MEETING:</b>
Tuesday 12 <sup>th</sup> November	Parish Council
Wednesday 27 <sup>th</sup> November	AGM – open meeting
Tuesday 3 <sup>rd</sup> December	Precept Meeting only
Tuesday 10 <sup>th</sup> December	Parish Council
Tuesday 14 <sup>th</sup> January	Parish Council
Tuesday 10 <sup>th</sup> March	Parish Council
Tuesday 14 <sup>th</sup> April	Parish Council
Tuesday 12 <sup>th</sup> May	Parish Council A G M - <b>6.30pm</b> Annual Parish Meeting - <b>7.30pm</b>
Tuesday 16 <sup>th</sup> June	Parish Council
Tuesday 21 <sup>st</sup> July	Parish Council
Tuesday 8 <sup>th</sup> September	Parish Council
Tuesday 13 <sup>th</sup> October	Parish Council
Tuesday 10 <sup>th</sup> November	Parish Council
Tuesday 1 <sup>st</sup> December	Precept only meeting
Tuesday 8 <sup>th</sup> December	Parish Council



### **Mobile Library Service**

**The mobile library visits Enford, Water Lane every four weeks on a Friday  
3.45 – 4.10pm.**

For adults, there is a large range of information, books and novels, ranging from the latest thriller to best-selling autobiographies, cookery and gardening. There is also a wide selection of large print and talking books.

If you are a parent with young children, you will find a great range of picture books and story CDs for them to enjoy; there are information books and plenty of exciting reading for older children as well.

There is access to the whole county stock through the Wiltshire Libraries online catalogue. Books, audio books and DVDs can be requested on the mobile or online and collected by customers from the mobile library. All children's stock can be requested free of charge with a small fee for adult requests. You can also use your membership card at any Wiltshire library and return books to the mobile library.

- ♦ It is free to join and there are no fines for overdue books on the mobile library.
- ♦ It's easy to join, just bring along proof of your name and address and the friendly Mobile Manager will sign you up straight away – they are always happy to help.
- ♦ The mobile has full accessibility and is fitted with a customer lift.

**Future stop dates:-  
November 22, December 20**

**More information about the mobile library service is available online at  
<http://services.wiltshire.gov.uk/MobileLibrary/>**

## November Novelties

For many of us, especially locally, the most important day this month is the 11<sup>th</sup>, Remembrance Day and we have acknowledged this elsewhere within the newsletter. However, early November, in particular, plays host to other traditions which, in their time, were as relevant to those who lived then.

1<sup>st</sup> - All Saints' Day and made a church holiday in the year 835 but it used to be called All Hallows; "hallow" from old English meaning holy person or saint. The holiday actually starts on the evening before - but that's October and won't be mentioned here!



2<sup>nd</sup> - All Souls' Day when all the dead are remembered. Some areas of the country end the day with a play or musical event. Before the Reformation poor people would offer prayers for the dead, receiving food, "Soul Cakes" from those who were wealthier. In later centuries the tradition evolved into children going round singing for Soul Cakes, which are similar to hot cross buns but without the fruit or cross.

4<sup>th</sup> was Mischief Night in some areas, an excuse to do naughty things, especially moving things from their proper place. In parts of Derbyshire and Yorkshire children would go "Jolly Minering", singing "We're three jolly miners and we're not worth a pin

So give us a piece of coal and we'll make the kettle sing."

While the song pre-dates Guy Fawkes and was originally used to beg for fuel for the fire (on which the kettle would be heated), after the Gunpowder Plot, the aim changed to raise money for sweets and fireworks - an early version of "Penny for the Guy".



11<sup>th</sup> - prior to 1918, the Feast of St. Martin of Tours, best known for cutting his cloak in two to give half to a beggar clad only in rags in the depth of winter. "Martinmas" was a time of celebrations and hiring fairs where farm labourers would seek new posts after the harvest and wheat seeding had finished.

In South Derbyshire, farm workers would be treated to "Cakes and Ale" feasts by the farmers where "Hopper Cakes", made with seeds and whole grains, were served. Beef was traditionally the meat eaten.

The second Saturday sees The Lord Mayor's Show in London, celebrated almost without fail, even during the 2 World Wars. It has only been stopped by the Black Death and for the Duke of Wellington's funeral in 1852.



The last Sunday is traditionally the day for everyone in the family to take turns stirring the Christmas Pudding and making a secret wish. The pudding was stirred East to West to honour the Magi. The term also has roots in a prayer spoken on that day starting "Stir-up we beseech thee, O Lord, the wills of thy faithful people" although children irreverently sang their own version on the way home from church "Stir-up we beseech thee, the pudding in the pot; and when we get home, we'll eat the lot."





**Do you have some time to spare to support local older people?**

Information about all our roles can be found:

- ⇒ on our website [www.ageukwiltshire.org.uk](http://www.ageukwiltshire.org.uk) or
- ⇒ by calling our office on 01380 727767
- ⇒ or emailing us at [volunteering@ageukwiltshire.org.uk](mailto:volunteering@ageukwiltshire.org.uk)

Whatever your reason for volunteering, we'd be delighted to hear from you.

**VS**

### **VICTIM SUPPORT Have you been affected by crime?**

Victim Support offers free and confidential help and support to anyone affected by any crime.

The charity is independent of the police and you can access services whether or not the crime has been reported and regardless of when it happened.

For support, contact: Wiltshire Office: **01380 738878**

Freephone: **0800 281 0113** Email: [wiltshire@victimsupport.org.uk](mailto:wiltshire@victimsupport.org.uk)

[As an independent charity, we work for a world where people affected](#) by crime and traumatic incident get the help they need and the respect they deserve. To find out how you can help us help more people visit [victimsupport.org.uk/get-involved](http://victimsupport.org.uk/get-involved)



### **COME AND JOIN US FOR AN EVENING OF DARTS**

**Every Wednesday 8.30pm  
at The Swan  
Hope to see you there!**



### **FUN FOOTBALL SESSIONS (Age 5yrs to 11yrs)**

**EVERY SATURDAY MORNING  
(during school term time)**

**AT ENFORD VILLAGE HALL**

**10 until 11 am £2.50 a session**



For the dates for the next coaching sessions or further information please contact Steve Todd on 01980 670934

Any child who wants to take part should be aged between 5 and 11 years old and they should bring their own shin pads, suitable footwear and a drink.

**FA Level 1 and 2 Coaches, CRB checked**



## Little Phoenix Toddlers



We meet during term time  
every Friday

Choulston Close Community Centre, SP4 9PZ

9:30am to 11:30am

£1.50 per family

Parents, babies and toddlers all welcome

Contact Alice at [afreether1@hotmail.co.uk](mailto:afreether1@hotmail.co.uk)

### Netheravon Library

Netheravon Library (on High Street) is open on

**Mondays 1pm to 7pm and  
Thursdays 1pm to 5pm.**

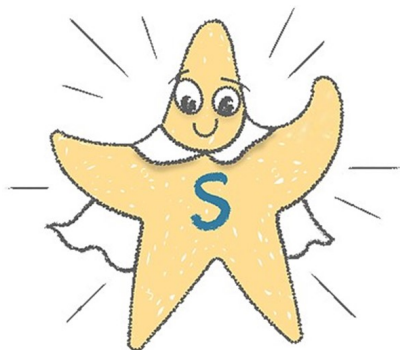
There is a good selection of children's and adults' fiction and non-fiction books.

DVDs and audio books can be hired and there is a computer for public use.

*Come and discover the delights of your local library.*

Christina Georgeson  
07764 202 909

**Schoolreaders**  
improving literacy • increasing life chances



are looking for volunteers.

Please visit our website

[www.schoolreaders.org](http://www.schoolreaders.org)

for more information  
to listen to children read  
in local primary schools.





## Alzheimer's Society's carer support group in Tidworth



A group offering carers a space to talk about their experiences of caring for someone with dementia; this is an opportunity to share information, hear about coping strategies as well as to give and receive advice and support with other carers. The group meets on the second Wednesday of the month at:

**The Castle Practice Surgery on Drummer Lane, Tidworth.**

The next meeting will take place on:

**Wednesday 11 December 2019**

**between 10.30am-12.00noon.**

Places do not need to be booked in advance.

Carers can turn up on the day.

**For more information about the group please contact Sarah Thomson at Alzheimer's Society on 01249 443469.**



## "My Flower Patch"

### Christmas Wreath Workshops

Workshop places are £45 per person

They run 10am – 1pm & are all held at

Upavon Village Hall, 9 Andover Road Upavon SN9 6EB

23<sup>rd</sup>, 24<sup>th</sup>, 25<sup>th</sup>, & 26<sup>th</sup> November      1<sup>st</sup>, 2<sup>nd</sup>, & 3<sup>rd</sup> December

Workshops last around three hours. The cost includes refreshments and all tools & materials needed to create a festive foliage wreath, decorated with a ribbon of your choice and pinecones, with optional extras available.

Email [Sara@myflowerpatch.co.uk](mailto:Sara@myflowerpatch.co.uk) to book your place.

More information on <https://myflowerpatch.co.uk/blog>





Enford, Chisenbury and Coombe  
**Ladies' Christmas Dinner 2019**



The Swan at Enford  
 Wednesday 18 December at 7.00pm for 7.30pm

The cost for the evening is £25 (for 3 courses) or £19 (for 2 courses) to include a welcoming glass of mulled wine or elderflower cordial on arrival AND coffee after your meal.

Please complete the form below to reserve your place.

Name: .....

Address: .....

Telephone: ..... Email: .....

<b>STARTERS</b>	
<input type="checkbox"/> Belly pork with black pud crumb, apple & bacon jam	<input type="checkbox"/> Partridge & Armagnac pate
<input type="checkbox"/> Potted goat's cheese & port jam with toasted soldiers (v)	<input type="checkbox"/> Red pepper soup with croutons (v)
<input type="checkbox"/> Slow gin cured salmon	
<b>MAINS</b>	
<input type="checkbox"/> Traditional turkey	<input type="checkbox"/> Blade of beef with rich red wine jus
<input type="checkbox"/> Root veg, walnut & ricotta wellington (v)	<input type="checkbox"/> Seabass with mussel cream
All served with traditional Christmas trimmings; chipolatas, sausagemeat stuffing ball, roasties, sprouts, carrots, red cabbage & cauli cheese	
<b>PUDDING</b>	
<input type="checkbox"/> Christmas pud with ginger crunch	<input type="checkbox"/> Class sherry trifle (v)
<input type="checkbox"/> Black forest Alaska (v)	<input type="checkbox"/> Choc & Orange ice cream bombe (v)
<input type="checkbox"/> Panettone bread & butter pud with prosecco sorbet (v)	<input type="checkbox"/> Cheeseboard with biscuits & quince jelly (v)

Please return this form by 2<sup>nd</sup> December, along with full payment  
 (cash, or cheque payable to Dickle Ltd) to:

Julia Sturgis, Allwood House, 54 Enford Hill, Enford OR  
 Geraldine Symonds, Swancote, Longstreet, Enford.

Full refunds will be given for cancellations made before 5 December.

If you have any questions, please do not hesitate to call: Julia on 01980 670156 or Geraldine on 01980 670401. **Please do not return your completed booking form to The Swan.**

## Excerpt from Army Basing Newsletter – September 2019

For more information visit: <http://www.wiltshire.gov.uk/communityandliving/mci-new.htm>

### Operation FARAN

This summer has seen the return of almost 4000 and 1300 military families from Germany to the UK, the majority of which have been rebased to Wiltshire.

### Schools welcome Army children as 100s of Service Personnel & families move to Wiltshire

Over the summer hundreds of Service Personnel have been moving to Wiltshire to make their home in the county as part of the Army Basing Programme. Local schools are welcoming the children of Army Basing families into classrooms and helping the pupils settle into life in Wiltshire. As part of the Army Basing Programme hundreds of additional school places were created to prepare for the additional pupils. The school build programme, funded by a significant contribution from the MOD and gifting of MOD land, has involved building new schools and the expansion of some existing schools.

### Road Works

A condition of the planning permission consent given by Wiltshire Council to the MOD to build new Service Families Accommodation (SFA) was that the ABP undertook a series of highways improvements. A double, mini roundabout was required in Bulford village to replace the previous, busy crossroads. This is now complete and will improve traffic flow through the village. A mini roundabout has also replaced a 'T' Junction where Orchard End meets the A3028; these works completed on the 5 Sep 19. At J22 (Ludgershall Road, Pennings Road and A338) works will commence on 7th Oct 19 until Feb 2020. Traffic lights will be in operation during these months.

Highways England will have night closures on the A303 East direction/A338 slip road commencing on 7 Oct 19 for a period of 7 weeks. Further information regarding road-works under the ABP can be found in the regular Travel Notices issued.

### Road safety measures being installed at Durrington



St Michael's Primary School in Larkhill was built to cater for the influx of children under the Army Basing Programme. A number of children attending the school are from the Durrington area.

Following local concerns some additional measures are being put in place on the A345 to ensure Durrington families walking children to school can safely cross.

A dropped kerb, additional signage and a school crossing patrol are being put in place. A permanent crossing is due to be placed on the road in the future.

### Behind the Wire

The Larkhill Medical and Dental Centre is progressing well with a planned completion in Spring 2020. It will be a mixed facility run by the NHS and the military for the local community and Larkhill Garrison. In the meantime, there is a temporary facility on the Packway for Service Personnel,



## **ENFORD PARISH COUNCIL (For future meetings see p13)**

### **Abridged Draft Minutes of the meeting of 8th October 2019**

#### **19/112 Public Questions**

Robin attended the meeting regarding the dog bin in Water Lane. It is set too far back from the side of the road and therefore the mud/long grass hinders access for ease of use. Could the Council please bring the bin forward to the road. This was referred to Cllr Coulthard as a job for the Parish Steward.

-Mike Germany from Fifield also attended the meeting to thank the Parish Council for the re-location of the dog bin and ask about the progress of the proposed new Salt Bin at the top of Fifield Lane. Cllr Roberts explained that there had been email correspondence between house owner nearest the new location of the dog bin and the Clerk. The house owner had been concerned about its proximity to his house, the possible smell, the emptying process and the necessity for such in the middle of the countryside. The Clerk has hopefully allayed his concerns. The Clerk is continuing to chase the new salt bin with the Contractor who cannot do anything until Highways have agreed the position.

-Mike Germany also mentioned he had some wood to donate to the village bonfire and wanted to know who to speak to about it. Cllr Roberts directed him to Judy D'Arcy-Irvine.

#### **19/113 Police Matters and Neighbourhood Watch**

There was no Police Liaison in attendance. Cllr Roberts read out the only reported issue in Enford from the September Police report which was "23-Sep-19 Unknown suspect(s) have damaged a front fence by unknown means, the fence has collapsed and the concrete has been damaged". W Cllr Ian Blair-Pilling suggested the Police might be more able to visit 'The Hub' sessions on a Thursday morning rather than a Parish Council meeting in the evening.

#### **19/115 Unitary Council Matters**

The recent 'Paths for All' meeting had gone well with a good presentation from the MOD Liaison who also indicated the possibility of partial use of some MOD land. Avon Valley as a group in the project are 'ahead of the game' and Collingbourne Ducis have used Facebook as a means of getting the message out to as many people as possible – this drew in 500 responses. The next meeting is scheduled for 15<sup>th</sup> January 2020. At the cabinet level, Wiltshire are achieving great results all over the County on many wide-ranging issues – Chippenham housing infrastructure, Community funding review, reduced homelessness levels and Carbon reduction levels (down by 25%). Wiltshire has come out as the highest achieving county according to Friends of the Earth. The Council are trying to make the county carbon neutral by 2030 and all questions posed by Extinction Rebellion were answered. The Maltings in Salisbury are showing very good plans for development with 1000 county-wide high quality, low carbon homes to be built. Cllr Holdway asked if these included bungalows. WCllr Blair-Pilling confirmed it did and explained that normally Housing Associations prefer to sell off bungalows as they are 'old stock' and costly to run despite being aimed at the requirements of those with not much available funding. Wiltshire's building policy will cover all types of housing to a high specification.

#### **19/119 Matters Arising**

I Land Asset Transfers. Cllr Cliffe-Roberts reported that he had spoken with Jenny Rowe, Estates Manager for Wiltshire Council, explaining the Parish Council were unwilling to take on the maintenance of the freehold strips of land along the A345 in return for a leasehold interest in the land for an extension of the Playpark because a clause in that lease (as proposed by Wiltshire) allowed them to terminate the lease at any time in the future on short notice. He had asked about the removal of this "break-clause" from the proposed lease, to which Jenny had replied that it was a standard clause but suggested he write to her with a proposal of what would be acceptable to the Parish Council. The Councillors agreed that Cllr Cliffe-Roberts would write to Ms Rowe, setting out proposals. If the break-clause is dropped from the Lease the PC would in turn look again at taking on the strips of land on the A345, and Cllr Coulthard agreed to speak with the Wiltshire Highways about the extent to which they would have to be maintained in the future. Cllr Cliffe-Roberts and Cllr Coulthard will both report back at the next meeting.

ii Cllr Roberts explained that he and Cllr Hiskett had gone through the 'research' the Clerk had provided. Being unable to contact the companies involved by phone they had gone to a local carpenter who had in fact made the board for Woodborough. It is as the Council had wished it to be i.e. made of solid oak and can be on either its own legs or wall mounted, finished to a high specification which should a) look good for the village and b) last for many years to come. An order has been placed and a deposit paid for a new board in the centre of the village and a replacement board in Coombe. These cannot be started until after Christmas due to the Carpenter's current work levels. The board in East Chisenbury will hopefully last a little bit longer!

iii The Annual Playpark Safety report. This was distributed to all Cllrs. There was nothing too serious apart from one chain link matter to be looked at. Any replacement or new equipment does depend somewhat on the extension Lease (see above 19/119.iii). A brief discussion was had about other facilities in the area and these will be inspected (Everleigh and Ludgershall).

iv Remembrance Sunday. This will be on 10<sup>th</sup> November. The wreath has been ordered and will be delivered to the Clerk during the week beginning 21<sup>st</sup> October. The Clerk confirmed that the WWII commemorative poppies were now ready for collection and Cllr Roberts suggested/asked for volunteers to help put the poppies up towards the end of the month/beginning of November. Cllr Roberts also mentioned the tree (Weeping Beech) that was planted last year to mark those who had died in WWI. The tree has been tended throughout the year and continues to thrive in the Community Garden.

### **19/123 The Parish Hall**

Cllr Cliffe-Roberts reported that the Asbestos Survey has now been received. He has sent a copy to the demolition company and has requested their confirmation of their original quotation (given a year ago) and their Method Statement. Both the asbestos survey and method statement will then be sent to Wiltshire Council allowing demolition to commence.

### **19/124 Roads and Highways**

Cllr Coulthard reported that he will chase up Gareth Rogers who was going to look at the village and its current speeding limit/potential for reduction. Work for the Parish Steward will include cutting areas around rubbish and salt bins, unblocking ditches and he will contact Wiltshire Council to try and get the drains beyond the Village Hall jet-cleaned where rainwater floods the road. Mike Germany has dug these drains out by hand as far as he is able but jetting will be required to clear them right through.

### **19/125 Public Rights of Way (PRoWs)**

Cllr Mark Hiskett sent his apologies and noted that:

"The Avon Valley Group meeting to identify 3 circular walks to catalogue, describe and advertise has moved from 1900hrs Wed 16th Oct to Wed 23rd Oct. Additionally, there is a call for volunteers to assist in footpath maintenance in Netheravon on both the 23rd and 30th Oct - contact Mark Hiskett or Mary Towel." See also WCllr Ian Blair-Pilling's comments above in Unitary Council Matters 19/115.

### **19/126 Correspondence**

i The Clerk reported that she had been informed by Wiltshire Council of a Code of Conduct complaint that had been lodged involving four Councillors in total. Under Enford's Standing Orders she was required to report this to the Council generally though until it is resolved, she was unable to give the Council any further information.

ii Cllr Roberts read out parts of a letter from Claire Perry MP informing him of her intention to stand down at the next election. She will however be continuing her work on a cleaner, greener environment for everybody. Cllr Roberts thanked her in her absence for her efforts and assistance to Enford Parish Council over the years

iii Cllr Roberts read out an email from Nick Tissot of Figheldean Parish Council who appears to be concerned at the apparent 'green light' for the Royal Artillery Museum at Netheravon. He was proposing that local councils would have a stronger voice if working together. After a brief discussion it was felt that it would not affect Enford particularly apart from maybe increased traffic. It was not understood whether Nick Tissot was for or against the project.

**19/110 Date of Next Meeting Tuesday 8<sup>th</sup> October 2019 at 7.30pm in the Village Hall**

Friends of Netheravon School PTFA

# Christmas Fayre

**Friday 29th November**



**Phoenix Hall, Netheravon**

**3.15pm - 5pm**

**Father Christmas, Raffle, Tombola,  
Outside stalls, Games, Refreshments**

**Raising funds for Netheravon All Saints C of E Primary School**



## Meet Santa Early!

He will be visiting Enford Church on  
Saturday 30th November from 1pm to 4pm  
and would especially like to meet all the lovely children  
from Enford Parish aged 11 and under.

Please let Katie know if you can make it on:

01980 670573

Hope to see you there!

### **THE PARISH HALL MANAGEMENT COMMITTEE**

will be holding their

### **ANNUAL GENERAL MEETING**

**On Wednesday, 27<sup>th</sup> November at 7.30pm  
in Enford Church.**

Anyone wishing to attend is very welcome



# Enford Church Christmas Fayre

Saturday November 30th  
1pm-4.30pm

Santa's Grotto  
Teas-Hot Dogs-Soup  
Raffle-Bottle Tombola-Beer  
Jewellery-Crafts-Gifts  
Toys and Books-Cards  
Cake Stall

Come along and bring your friends and  
family

Entrance free



## ENFORD VILLAGE – DOG MESS BINS



 This image represents the bins available for bagged dog mess in the village.

 This image represents the footpath from Coombe Lane to Fifield. The bin has been relocated.

**The bins have been paid for by the Parish Council who also pay for their regular emptying. This is to try keep the kerbs, walks and paths etc. around the village as clean and pleasant as possible for everyone to enjoy.**

This map is for representational purposes only and not to scale.

**Please clean up after your dog and use these bins provided.**

Thank you.

### **The Enford Community Fund**

Funding is available to help projects/events in the Parish of Enford (which includes East and West Chisenbury, Coombe, Fiffield and Littlecott).

Applications for awards must be made to the treasurer, Amanda Farrow, by email or letter, no later than the first day of the award month (March and September).

[amanda.farrow@chisenbury.co.uk](mailto:amanda.farrow@chisenbury.co.uk) or 537 East Chisenbury.

The following guidelines will be followed in allocating funds:

1. Awards will be considered every 6 months in March and September.
2. Awards will be made for individual projects and are not designed to allow awardees to become reliant on the award on an annual/regular basis.
3. Awards will be made to causes that benefit the community and not specific individuals.
4. No awards will exceed £1,000.
5. For any award to be made, there must be agreement by at least 75% of the Committee.

## **Advertising**

### **Advertise in the Newsletter**

**+£22 per 1/8 page +£48 per 1/3 page**

**+£60 per 1/2 page and +£100 per full page  
for 10 issues**

## ***Jonathan Green Antiques***

### **We Buy & Sell**

Silver  
Jewellery  
Gold Coins  
Anything interesting  
Home Visits no obligation

### **Repair & Restoration**

Silver  
Jewellery  
Hand Engraving  
Machine Engraving  
Remodelling of Jewellery

**You can find us at the rear of the ground floor.**

The Antiques Market

37 Catherine Street

Salisbury

SP1 2DH

01722 332635

Email: [jg@jonathangreenantiques.co.uk](mailto:jg@jonathangreenantiques.co.uk)



## WILTSHIRE WILLOW:

### LOGS AND FIREWOOD FOR SALE

Seasoned and split logs, kindling and firewood

Ideal for wood-burning stoves and open fires

**\*Trailer loads for £85.00**

**\*Weekend bags for £20.00**

**Kindling on request.**

**To order your free delivery, please call Martin on 07788 429772**

**DELIVER FREE WITHIN 5 MILE RADIUS OF ENFORD**



**M NASH & P WILKINS**

**ALL LANDSCAPING WORK  
UNDERTAKEN**

**\*FENCING\***

**\*PATIOS\*PATHS\*PONDS\***

**\*BRICKWORK\***

**\*HEDGE CUTTING\***

**\*GARDEN CLEARANCE\***

**\*GRASS CUTTING\***

**Tel: MIKE 01980 635324**

## MOBILE HAIRDRESSER

**Ring Donna**

**on**

**07711 579403**

**Advertise here for only**

**✦ £22 per 1/8 page**

**✦ £48 per 1/3 page**


**✦ £60 per 1/2 page**

**✦ £100 per full page  
for 10 issues**

**Call Jeni Scott-Dagleish on  
01980-670210 or 07779  
986920**

## CLAIRE PERRY

*Working hard for the  
Devizes Constituency*

 **Claire Perry MP**  
House of Commons  
London  
SW1A 0AA

 **01380 729358**

 **www.claireperry.org.uk**

 **claire.perry.mp@parliament.uk**



*I hold regular surgeries around the Constituency  
- please call or email to book an appointment*

## MOTOR GARAGE LTD

**Servicing, MoT tests and Repairs for  
Classic Cars as well as Modern**

**Telephone: 01980 670348**

**www.themotorgarage.co.uk  
enquiries@themotorgarage.co.uk**

**Netheravon, Salisbury, Wiltshire, SP4 9RH**



18 The Bluestone Centre, Sunrise Way, Solstice Park, Amesbury, Wiltshire,  
SP4 7YR

T: 01980 258472 E: [equidae-equineservices@outlook.com](mailto:equidae-equineservices@outlook.com)

## We sell a variety of

Equine Feed, Supplements and Health Care Products

Field and Stable Accessories

High Viz items

Clothing

Equine and Small Animal Bedding

Poultry Feed, Oyster Shell and Grit

Dog Feed

Small Animal Feed

If you require something not in stock, let us know and  
we will try to get it for you.

## Also Available

Rug Wash and Reproofing Service

Horse Rug Repair Service

Horse Trailer Hire

Paddock Cleaner Hire



# *body* fitness studio **works**

Abbey Square Amesbury Tel:- 01980 625050

Affordable Personal Training !!

**Are you bored at the gym?**

**Are you tired of being left on your own?**

**Do you want better results?**

**You're not on your own at our club!**

***We teach, motivate and help you achieve  
your desired results***

**CALL US NOW ON: 01980 525050**



**Red Lion Freehouse**  
& TROUTBECK GUEST HOUSE



### Prix Fixe

Our fab Prix Fixe menu is still available Wednesday—Friday lunch times & Wednesday, Thursday evenings!

2 courses for £20

3 courses for £25

We also offer sensible 'lunchtime sized' glasses of paired wines for each course

We would love to remind everyone that the pub is now open Wednesday – Sunday

01980 671124

## ENGLISH COUNTRY GARDENS

Garden & lawn maintenance, hedge and tree work, fences, driveways & weed control  
Garden waste removed.

Qualified, fully insured and licensed, 23 years experience

### WE SUPPLY

Mushroom compost, manure, Pro Grow, woodchips, gravel, stone & scalplings

Loads of logs by size: £80, £140, £180

All seasoned & dry native species.

Can stack

Bags of kindling: £4.50 or 5 bags for £20

LOGS NOW  
AVAILABLE IN  
1& 2-TON BAGS  
For convenient  
outside storage

Call or text Nick on 07835299247

Free Delivery

## Avon Security

MASTER LOCKSMITHS

### Engraving Service Now Available

- > Brass
- > Plastics
- > Aluminium
- > Glass
- > Trophies
- > Gifts

### Free Advice & Quotations On Securing Your Property & Belongings

Key Cutting  
Locks Supplied & Fitted  
Access Control  
Safes  
PVCu Locks  
Master Key Systems  
Lock Repairs  
Door Furniture & Ironmongery  
Transponder Car Keys  
Keys To Code  
Watch Batteries & Straps  
Emergency Call Out Service



**01980 626000**

21, Salisbury Street, Amesbury, Wiltshire, SP4 7AW  
**www.avonsecurity net**



# Digger & Mojo

WOODBOROUGH

DECORATIVE ANTIQUES &  
VINTAGE EMPORIUM  
WORKSHOPS & CHRISTMAS GIFTS



*We restore Antiques + revamp your Furniture  
Mending • Painting • Reupholstery*



Shop/Office: 01672 851 510  
Email: [ask@diggerandmojo.com](mailto:ask@diggerandmojo.com)  
[www.diggerandmojo.com](http://www.diggerandmojo.com)

*"IT'S A KIND OF  
MAGIC"  
Salisbury Life Magazine*

WOODBOROUGH GARDEN CENTRE  
WOODBOROUGH, PEWSEY, WILTSHIRE, SN9 5PF

OPEN 7 DAYS 11am - 5pm



## Plumbing, Heating, Electrical & Renewable Energy

Solar Thermal & PV, Air & Ground Source Heat Pumps, Ventilation, Boiler Replacements. Domestic, Commercial & Industrial Contractors. Family Business Established 1970.

### Free Estimates and Advice:

Tel: 01980 670667 Fax 01980 670811

[www.rgvengineering.co.uk](http://www.rgvengineering.co.uk) [info@rgvengineering.co.uk](mailto:info@rgvengineering.co.uk)



## MODERN & TRADITIONALLY DESIGNED MEMORIALS

**M J SLY**

*Monumental Stonemason*

*New Memorials, Additional Inscriptions  
Restorations, Free Home Visits  
Free Brochure*

**Marlborough (01672) 516797**

Email: [martin@mjsly.co.uk](mailto:martin@mjsly.co.uk)

Website: [www.mjsly.co.uk](http://www.mjsly.co.uk)

*Workshop & Showroom at Pelham Court,  
London Road,  
Marlborough, Wiltshire*

Oil Boiler Servicing  
Commissioning & Repairs

**Call Graham C Brown & Son  
01980 622737**

Fully Qualified



Fully Insured

Experienced Technician

## SEAN DEVINE PAINTER & DECORATOR



**Free estimates.**



**Fully insured.**

**For local professional service call:**

**07870 454884 or 01980 630864**

**email: [sean.devine2@outlook.com](mailto:sean.devine2@outlook.com)**

## "PAMCAKES"

*Bespoke Cakes for your special  
occasions (any age group).  
Traditional and 3D, cupcakes and  
some Wedding Cakes. See my FB  
page "pamcakes of netheravon"  
for more details & website  
[pamcakesofnetheravon.co.uk](http://pamcakesofnetheravon.co.uk)  
[pamcakes@write.me](mailto:pamcakes@write.me) or call  
07919656141*



## Kate Robinson Flowers

Award winning wedding and  
event florist.

Stylish and elegant arrangements  
for venues, church and bridal party

Call Kate on 07906 580361

Or go to:

[www.katerobinsonflowers.co.uk](http://www.katerobinsonflowers.co.uk)



Bespoke Fashion Design and  
Dressmaking for any occasion.

For more details contact

Ramona Edwards

[rhensel85@gmx.de](mailto:rhensel85@gmx.de) // 07827597084

## KD WORSDELL

**Carpentry & Joinery  
Building Works & Maintenance  
Bathrooms and Kitchens**

**Please Call  
01980 630545  
Or  
07759 586162**



# AKER

FIRE & SECURITY

INTRUDER, FIRE, CCTV, CARBON MONOXIDE &  
SMOKE ALARMS, GATE AUTOMATION

We can offer a one off service or fault finding visit without  
the need for a long term contract call 07515358875 or email

[info@akerfireandsecurity.co.uk](mailto:info@akerfireandsecurity.co.uk)



## Valleywide Taxis of Pewsey

now has a lady driver in  
West Chisenbury

8 seater and wheelchair  
accessible vehicles available

\*FREEPHONE\* 0800 170

7575 to book

Advance bookings can also be  
made via our Facebook Page

## Bits & Pieces (Durrington Ltd)

**BUILDING, GARDENING & DIY**

**PETS, PANELS, AGGREGATE**

37 - 39 Bulford  
Road, Durrington  
Wiltshire SP4 8DL

Tel: 01980 655552  
Fax: 01980  
652351

Proprietors: P & M Conn

## Southern Chimney Services

**CHIMNEY SWEEPING & SURVEYS**

**POTS & COWLS FITTED**

**FLUE LINER INSTALLATIONS**

**BURNER INSTALLATION**

**FOR RATES & APPOINTMENTS**

CALL PETE ON 07432 899715

01672 811650

[www.southernchimneyservices.co.uk](http://www.southernchimneyservices.co.uk)

[southernchimneyservices@gmail.com](mailto:southernchimneyservices@gmail.com)



## S.O. CHIMNEY SWEEPING

- ♦ Camera Surveys
- ♦ Birds Nests Removed
- ♦ Fully Insured
- ♦ NCSSA Registered
- ♦ Friendly Local Service
- ♦ Cowls Fitted

**Call Sean on 07881 206536**

[seanoades@hotmail.com](mailto:seanoades@hotmail.com)

## TIM BUCKLAND BOILER MAINTENANCE

*FOR SERVICE AND BREAKDOWNS*

*Friendly and efficient service  
Wide stock of boiler spares in stock*

**VERY COMPETITIVE PRICES**

*Also AGAs and RAYBURNs serviced*

**Tel: 01980 551386**

## Advertise here for only

✦ £22 per 1/8 page ✦ £48 per 1/3 page

✦ £60 per 1/2 page and ✦ £100 per full page  
for 10 issues

**Call Jeni Scott-Dalglish on 01980-670210 or 07779  
986920**

# VILLAGE HALL AND RECREATION GROUND



## Contact Details:

**Booking Officer** 01980 670501  
**enfordvillagehall@btinternet.com**  
**www.enfordnewsletter.org**

**Chairman** 01980 670501  
**Grounds Officer** 01980 670210  
**Maintenance Officer** 01980 670526

**Private Parties**  
**Planning a children's party?**  
**Celebrating a special birthday or anniversary?**  
**The hall is the perfect venue for weddings and parties!**

Day	Activity	Time	Contact
Mon	Yoga Beginners Yoga Intermediate	6.00pm – 7.15 pm 7.30pm—9.00pm	Emma Petitt 01980 670510 yoga@emmapetitt.co.uk
Tues	Enford Film Club	4th Tuesday in the month Doors open 7.00 pm	Judy D'Arcy-Irvine 01980 670501
Wed	Short Mat Bowls	7.30 pm – 10.00pm October to March	David Spencer 01980 670526 spencersgb@yahoo.co.uk
Thu	Pilates	8.45 am – 9.45am	Nicci Caswell 01980 625245 nicci@thecaswells.uk
Thu	Camera Club	8.00 pm – 9.00 pm 1st Thursday in the month	Martin Webb 01980 670537 webb14@btinternet.com
Thu	Gardening Club	7.00pm – 9.00 pm 2nd Thursday in the month	Fanny Middleton 01980 671645 fannysurtees@btinternet.com
Fri	Yoga	6.30 pm - 8.30 pm	Andi Baburske Mob 07935 072893 email <a href="mailto:jackiebrown_2@gmx.de">jackiebrown_2@gmx.de</a>
Sat	Children's Football Coaching Sessions	10.00am -11.00 am Recreation Ground	Steve Todd 01980 670934 STODD@qinetiq.com
Sun	Netheravon Wanderers Football Club (NWFC)	Home matches 10:30am Kick off	Marc Williams 07500 785116 email: <a href="mailto:sundayclub2019@yahoo.com">sundayclub2019@yahoo.com</a> Facebook: Netheravon Wanderers Football Club

## VILLAGE COMMITTEES

### PARISH COUNCIL

<b>Chairman</b>	Richard Roberts	671055
<b>Vice Chairman</b>	Mark Hiskett (PROW)	670955
<b>PCC Representative</b>		
<b>Public Rights of Way</b>		
<b>Planning</b>	Peter Cliffe-Roberts	671676
<b>Parish Clerk</b>	Elizabeth Harrison	670034
<b>Playpark/Village Amenities</b>	Jane Young	670532
<b>and Youth Representative</b>		
<b>Tidworth Area Board and</b>	Anthony D'Arcy Irvine	670501
<b>Village Hall Representative</b>		
<b>No specific role</b>	Bruce Waight	670113
<b>No specific role</b>	Pat Holdway	671792
<b>No specific role</b>	Vick Exley	07870 189235
<b>Steward Contact</b>	Rob Coulthard	670967

### NETHERAVON SCHOOL

<b>Chairman of Governors</b>	Mr Richard March
<b>Head Teacher</b>	Mrs Gillian Durrans

### NEWSLETTER

<b>Chair</b>	Diane Christie-
<b>Rundle</b>	
<b>Vice Chair</b>	Jane Young
<b>Secretary</b>	Ann Houghton
<b>Treasurer</b>	Roz Perry
<b>Advertising</b>	Jeni Scott-Dalgleish
<b>Village Hall Rep</b>	Jacqui Elkins
<b>Parish Council Rep</b>	Jane Young
<b>Compiler:</b>	Sue Cosgrove
<b>Committee Member</b>	Gay Monk

### PAROCHIAL CHURCH COUNCIL

<b>Church Wardens</b>	Sue de Candole
<b>Treasurer</b>	Tom Hunter
<b>Secretary</b>	Tom Hunter
<b>Council Members:</b>	Mary Burdick
	Anastasia Dubovic,
	Fanny Middleton
	Tim Edwards
	Michael Whitaker

### VILLAGE HALL

<b>Chairman and</b>	Judy D'Arcy-Irvine
<b>Booking Officer</b>	<b>(670501)</b>
<b>Vice Chairman</b>	<b>Vacant</b>
<b>PC Rep</b>	A D'Arcy-Irvine
<b>Secretary</b>	<b>Vacant</b>
<b>Camera Club</b>	Jane Young
<b>Newsletter</b>	Jacqui Elkins
<b>Property Officer</b>	David Spencer
<b>Grounds Officer</b>	Hamish Scott-Dalgleish
<b>Gardening Club</b>	Rosemary Cox
<b>Short Mat Bowls</b>	David Spencer
<b>Junior Football Club</b>	Ollie Stagg
<b>Youth Club</b>	

<b>YOUR DIARY November 2019 (For regular Village Hall dates, see page 34)</b>		
1st	Fri	Little Phoenix Toddlers, 9:30am, Choulston Close Community Centre/ Youth Club Phoenix Hall, Netheravon 6pm/Yoga 6:30pm V. Hall
2nd	Sat	Youth football 10am V. Hall but see p34
3rd	Sun	Team Service in Durrington, 10:30am
4th	Mon	Netheravon Library 1pm-7pm/Bridge & Whist Phoenix Hall, N'avon 2pm
5th	Tue	SwanCraft 10am The Swan/Parish Council Meeting 7:30pm V. Hall/ Quiz Night 9pm The Swan
6th	Wed	Exercise night 6:30pm V. Hall/Short Mat Bowls 7:30pm V. Hall/ Darts' night 8:30pm The Swan
7th	Thu	<b>Household Waste</b> /Hub in the Pub 9:30am The Swan/ Camera Club V. Hall 8pm
8th	Fri	Little Phoenix Toddlers, 9:30am, Choulston Close Community Centre/ Youth Club Phoenix Hall, Netheravon 6pm/Yoga 6:30pm V. Hall
9th	Sat	Youth football 10am V. Hall but see p34/ Cancer Research Fair 10am Bouverie Hall Pewsey
10th	Sun	<b>Remembrance Service 9am</b> Enford Church Lychgate/ Remembrance Lunch 12noon V Hall
11th	Mon	Netheravon Library 1pm-7pm/Bridge & Whist Phoenix Hall, N'avon 2pm
12th	Tue	SwanCraft 10am The Swan/Parish Council Meeting 7:30pm V. Hall/ Quiz Night 9pm The Swan
13th	Wed	Alzheimer Carer Support 10:30am Tidworth/Exercise night 6:30pm V. Hall/ Short Mat Bowls 7:30pm V. Hall/Darts' night 8:30pm The Swan
14th	Thu	<b>Black box, Blue bin</b> /Hub in the Pub 9:30am The Swan/ St Francis School Christmas Fair 11am/Gardening Club V. Hall 6:45pm/ Military Wive's Choir, Figheldean Church 7:15pm
15th	Fri	Little Phoenix Toddlers, 9:30am, Choulston Close Community Centre/ Youth Club Phoenix Hall, Netheravon 6pm/Yoga 6:30pm V. Hall
16th	Sat	Youth football 10am V. Hall but see p34
17th	Sun	Breakfast Church, 9:30am Enford Church
18th	Mon	Netheravon Library 1pm-7pm/Bridge & Whist Phoenix Hall, N'avon 2pm
19th	Tue	SwanCraft 10am The Swan/Quiz Night 9pm The Swan
20th	Wed	Exercise night 6:30pm V. Hall/Short Mat Bowls 7:30pm V. Hall/ Darts' night 8:30pm The Swan
21st	Thu	<b>Household Waste</b> /Hub in the Pub 9:30am The Swan
22nd	Fri	Little Phoenix Toddlers, 9:30am, Choulston Close Community Centre/ Mobile Library 3:40pm Water Lane/ Youth Club Phoenix Hall, Netheravon 6pm/Yoga 6:30pm V. Hall
23rd	Sat	Christmas Wreath Workshop Upavon VH 10am/ Youth football 10am V. Hall but see p34
24th	Sun	Christmas Wreath Workshop Upavon VH 10am/ Evensong, 6pm Enford Church
25th	Mon	Christmas Wreath Workshop Upavon VH 10am/Netheravon Library 1pm/ Bridge & Whist Phoenix Hall, N'avon 2pm
26th	Tue	Christmas Wreath Workshop Upavon VH 10am/SwanCraft 10am The Swan Film Club V. Hall 7pm for 7:30pm/Quiz Night 9pm The Swan
27th	Wed	Exercise night 6:30pm V. Hall/Short Mat Bowls 7:30pm V. Hall/ Parish Hall Management Committee AGM 7:30pm Enford Church/ Darts' night 8:30pm The Swan
28th	Thu	<b>Black box, Blue bin</b> /Hub in the Pub 9:30am The Swan
29th	Fri	Little Phoenix Toddlers, 9:30am, Choulston Close Community Centre/ Netheravon School PTFA Christmas Fayre 3:15pm Phoenix Hall/ Youth Club Phoenix Hall, Netheravon 6pm/Yoga 6:30pm V. Hall
30th	Sat	Youth football 10am V. Hall but see p34/ Christmas Fayre 1pm Enford Church