

# Enford Newsletter

## What's Happening In and Around Enford



**FEBRUARY 2020**



## USEFUL NUMBERS

### EMERGENCY SERVICES

#### DOCTORS

DURRINGTON	Avon Valley Practice Surgery	01980 652378
DURRINGTON	Cross Plains Surgery	01980 652221
UPAVON	Avon Valley Practice Surgery, Fairfield	01980 630221

#### HOSPITAL

SALISBURY DISTRICT HOSPITAL	01722 336262
-----------------------------	--------------

#### POLICE

POLICE	101
--------	-----



#### OTHERS

ELECTRICITY	105
ENVIRONMENTAL AGENCY	0800 80 70 60
FLOOD LINE	0345 988 1188
GAS	0800 111 999
PLAINWATCH	01980 674700

#### DURRINTON LINK

LINK (Durrington & District)	01980 594857
------------------------------	--------------

#### SCHOOLS

DURRINGTON, Avon Valley Secondary School	01980 652467
FIGHELDEAN, St Michael's C of E Primary	01980 670268
NETHERAVON, All Saints' C of E Primary	01980 670339
RUSHALL, Rushall C of E Primary	01980 630360
PEWSEY, Pewsey Vale Secondary School	01672 565000

#### WILTSHIRE COUNCIL

BIN COLLECTIONS	0300 456 0102
-----------------	---------------

<http://www.wiltshire.gov.uk/rubbish-collection-day>

HOUSEHOLD RECYCLING CENTRES (HRC)
-----------------------------------

<http://www.wiltshire.gov.uk/household-recycling-centres>

### **WHAT CAN YOU DO TO REDUCE CRIME ON SALISBURY PLAIN?**

If any crime is taking place call 999 and do not under any circumstances challenge the offenders.

Report suspicious activity to PLAINWATCH (01980 674700) or [PLAINWATCH@landmarc.mod.uk](mailto:PLAINWATCH@landmarc.mod.uk). The more information received the better, e.g. time, place, vehicle registration, description of individuals and vehicles.

#### **Health and Safety reminder for all Military Training Areas and Ranges:**

Do not touch or tamper with Military debris.

Wash your hands before you eat.

Clean your footwear before you enter your car or home.

# CONTENTS

Useful Telephone Numbers/ Crime Reduction/	2
Next Newsletter Deadline/Apology	3
Team Rector’s Musings/Thank you	4
Church Services/Parish News	5
Youth Club/Hub in the Pub/ Jumble Sale/Fly-tipping	6
Panto/Enford Community Fund	7
Film Club/Koi for Sale	8
Gardening Club/ Alzheimer’s Society Support Group	9
Camera Club/Coming Up/ Local Interest Talk	10
Defibrillator/Bridge & Whist Group/ Swan Craft	11
Church Thank You	12
Age UK plea/Victim Support/Darts/ Fun Football	13
Toddler Group/SPTA news/ Netheravon Library/SchoolReaders	14
Road Closure/Dog Mess Bins	15
Parish Council Minutes and PC Meeting Dates	16-18
Mobile Library	18
Advertising	18-25
Village Hall Diary	26
Village Committees	27
February Diary	28

**The next  
Newsletter deadline is  
FRIDAY  
21st February 2020**

**Emails are preferred** but all items for inclusion, whether they are handwritten, typed or via e-mail, **MUST be submitted by the deadline date.**

These articles may be handed in to any Newsletter Committee member.

**Please send e-mails to [enfordnewsletter@gmail.com](mailto:enfordnewsletter@gmail.com)**

Enford Newsletter Committee reserves the right to reject or omit from publication any material that is considered by majority of Committee Members to be detrimental to any person or which is not in the best interest of the community as a whole.

All letters and articles must be signed, but the Committee will withhold the name of the writer if this is requested when submitted.

***Apologies for the missing row and column on last edition's Wordsearch. Hope it didn't affect your fun too much.***





### A word from Philip Bromiley our Team Rector:

Love is all around us....

For me, the month of February is all about love. On the 14th, that most romantic of days shall be upon on us. Have you heard the joke about two acrobats who fell head over heels in love? I won't go there. What does real love mean to us?

A group of professional people posed this question to a group of 4 to 5-year olds:

"Love is when mummy gives daddy the best piece of chicken." Elaine - age 5.

"Love is when your puppy licks your face even after you left him alone all day."

Mary Ann - age 4.

"There are two kinds of love. Our love. God's love. But God makes both kinds of them." Jenny - age 4.

"Love is what's in the room with you at Christmas if you stop opening presents and listen." Bobby - age 5.

"When someone loves you, the way they say your name is different. You know that your name is safe in their mouth." Billy - age 4.

The connection between love and St. Valentine is tenuous. Valentine was a Roman Martyr. He was always remembered by the church in Rome on February 14th and, because that day was also believed to be the day when the little birds got together to start building their nests, the link between romantic little birds and St. Valentine remained. Valentine didn't know much about romance, but he did know about love. He loved Jesus so much, he was prepared to die for Him, rather than renounce him.

As Huey Lewis once sang... "The Power of Love is a curious thing...." True love is costly. Love is about going out of your way for the other, making sacrifices. February also provides the Season of Lent, beginning on Ash Wednesday. It is a sacrificial season that challenges us once again to put more love into our lives, regardless of the cost.

Rev'd Philip Bromiley

XX



### Enford Curry Lunch Success

The Chairman and Regional Director of ABF The Soldiers' Charity in Wiltshire wish to thank all those who supported the Enford Curry Lunch in November. The amount raised for the Charity was £1,334.86, a record amount for this annual event.



## ALL SAINTS CHURCH, ENFORD Services

### February

- 2nd Holy Communion, 9.30am
- 9th Team Service in Milston, 10:30am
- 16th Breakfast Church, 9:30am
- 23rd Evensong, 6.00pm

### March

- 1st Holy Communion, 9.30am
- 8th Team Service in Milston, 10:30am
- 15th Breakfast Church, 9:30am
- 22nd **Mothering Sunday**, Evensong, 6.00pm
- 29th Family Holy Communion, 9.30am

**More information, help, details of Services in the 7 Avon Valley churches and Minutes of PCC meetings can be found on the website at [www.avonriverteam.org.uk](http://www.avonriverteam.org.uk)**

### PARISH NEWS

As the busiest month of the year in the church calendar feels quite far away now, we just wanted to take this opportunity to thank everyone who has attended our services. It was great to see you!

We will be organising various events throughout the year and hope you could join us for these – please keep an eye on future announcements.

Listed above are the details of All Saints’ forthcoming services - they are all different and suitable for variety of audiences. We look forward to welcoming you!

**Enford church has wonderful open spaces and is an ideal place to host club events, meetings, and parties - please contact [enfordpcc@yahoo.com](mailto:enfordpcc@yahoo.com) if you would like to discuss a possible booking.**  
**Kitchenette and WC facilities provided.**



**Don't Forget!**  
**The Church is open daily from 9.30am to 4.30pm.**  
**For any variation on this please call 670738 the night before.**



*Join us for*

# HUB IN THE PUB

*at The Swan, Enford  
every Thursday*

**9.30AM - 11.30AM**  
Bring family, a friend,  
your baby or just you!

*If you need a lift to or from The Hub  
please call the pub on 980 670338*

*If you would like to bake a cake, on a  
rota basis, we'd love to hear from you!*

# JUMBLE SALE

-----

# BUY STUFF

**Enford Village Hall**  
**8th February 2020**  
**2pm**  
**All for local causes**  
**Donations can be left**  
**in the garage at**  
**Beckenried or contact**  
**Jane on 670532 for**  
**further information**

**Wiltshire Council Launch the “We’re Targeting Fly-tippers Campaign”**

Wiltshire Council has launched a reward campaign to reduce fly-tipping throughout the county. They are urging anyone with any information about fly-tipping in Wiltshire to report it to them with as much information as possible, and any successful prosecution will earn a voucher of up to **£200** for the person who reported it.

**IMPORTANT:** Do not try to rummage through or disturb the waste, as this could affect the scene and put people in danger. It is also essential that people do not attempt to confront anyone who is fly-tipping or put themselves in danger in any way.

To report fly-tipping in Wiltshire, or to find out more about the campaign, including terms and conditions, go to:  
**[www.wiltshire.gov.uk/community-environment-wtf](http://www.wiltshire.gov.uk/community-environment-wtf)**

# IT'S PANTO TIME AGAIN!

Come and join Durrington Amateur Dramatics Society for performances of our next pantomime **Peter Pan**, an adaptation by Chris Bennion.

Storyteller Wendy and her young brothers Michael and John fly, courtesy of Tinkerbell's fairy dust, to Neverland with Peter Pan. Here they have adventures with Captain Hook and a crew of pesky pirates, a crocodile, Tiger Lily and the Lost Boys. Fun for all the family to eliminate the post-Christmas and winter blues!



As usual we have two shows on Saturday 1st February. Bring the children or grandchildren in the afternoon and have a great time shouting, booing and laughing! Refreshments and a raffle will be available.

Shows are at **2.00pm** and **7.00pm** and cost **£5 for children and OAPs** and **£8 for adults**.

Tickets can be booked by calling Clare on the Box Office on **07798 60 61 60**

or on [durringtondrama@hotmail.com](mailto:durringtondrama@hotmail.com)

Tickets can be paid for in advance (to avoid queues on show night) by bank transfer or by popping into the Village Hall between 7pm and 8pm on any Thursday night or between 2pm and 3pm on any Sunday.

## The Enford Community Fund

Funding is available to help projects/events in the Parish of Enford (which includes East and West Chisenbury, Coombe, Fiffield and Littlecott).

Applications for awards must be made to the treasurer, Amanda Farrow, by email or letter, no later than the first day of the award month (March and September). [amanda.farrow@chisenbury.co.uk](mailto:amanda.farrow@chisenbury.co.uk) or 537 East Chisenbury.

The following guidelines will be followed in allocating funds:

1. Awards will be considered every 6 months in March and September.
2. Awards will be made for individual projects and are not designed to allow awardees to become reliant on the award on an annual/regular basis.
3. Awards will be made to causes that benefit the community and not specific individuals.
4. No awards will exceed £1,000.
5. For any award to be made, there must be agreement by at least 75% of the Committee.



## ENFORD VILLAGE HALL FILM CLUB



**Tuesday February 25th**  
**“Official Secrets”**



She risked everything to stop an unjust war. Her government called her a traitor. Based on world-shaking true events, *Official Secrets* tells the gripping story of Katharine Gun (Keira Knightley), a British intelligence specialist whose job involves routine handling of classified information. One day in 2003, in the lead up to the Iraq War, Gun receives a memo from the NSA with a shocking directive: the United States is enlisting Britain's help in collecting compromising information on United Nations Security Council members in order to blackmail them into voting in favour of an invasion of Iraq. Unable to stand by and watch the world be rushed into an illegal war, Gun makes the gut-wrenching decision to defy her government and leak the memo to the press. So begins an explosive chain of events that will ignite an international firestorm, expose a vast political conspiracy, and put Gun and her family directly in harm's way.

Doors open at 7.00pm with the bar open until 7.30pm when the film starts.

**Tickets £5**

Please book in advance if possible to help with the administration!

**Drinks available from the Bar**

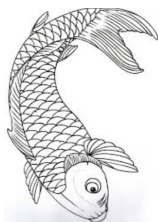
NB Film Club is generally held on the 4th Tuesday of the month.,

Tuesday 24th March—to be confirmed  
 Tuesday 28th April “1917” (filmed locally)

**We always need your help in choosing films – please let us know of any films friends have recommended! Would love to hear your suggestions.**

**Lifts can be arranged for anyone who would like to come – so do let us know if you would like to be collected and taken home.**

**If you wish to join the Mailing List, would like to book Tickets, or need a lift please contact 01980 670501 or email [enfordvillagehall@btinternet.com](mailto:enfordvillagehall@btinternet.com)**



### FREE TO A GOOD HOME ONLY!

Due to our Koi Carp and Comets outgrowing their pond, I need to streamline if anyone is interested? There are 2 or 3 Koi and 2 or 3 Comets.

Happy to keep them until March/April when the weather warms up.

All are healthy and have been with me for 5 years.

**Contact 07773 056424 (Enford)**





## ENFORD GARDENING CLUB



**Thursday 13th February 2020**

### **Scented Plants** *Marcus Dancer*

The talk looks at both perennials and shrubs through the calendar year. Illustrated with colour photos which will be passed round once discussed. Plants for sale.

**Do come and join us. All are very welcome.**

**Cost £4.00**

**Plants for sale/coffee/tea/raffle.**

As always meetings are at **Enford Village Hall, SN9 6DD.**

Lifts can be arranged, please ask.

**Starting Time 7.15 pm      Doors open 7pm**

Further details from Fanny Middleton, 01980 671645

email: [fannysurtees@btinternet.com](mailto:fannysurtees@btinternet.com)



### **Alzheimer's Society's carer support group in Tidworth**

A group offering carers a space to talk about their experiences of caring for someone with dementia; this is an opportunity to share information, hear about coping strategies as well as to give and receive advice and support with other carers.

The group meets on the second Wednesday of the month

**between 10.30am-12.00noon at:**

**The Castle Practice Surgery on Drummer Lane, Tidworth.**

Places do not need to be booked in advance. Carers can turn up on the day.

**For more information about the group please**

**contact Sarah Thomson at Alzheimer's Society on 01249 443469.**





## Enford Camera Club



The next meeting of Enford Camera Club will be at 8.00pm on Thursday 6th February 2020 at Enford Village Hall.

This month we will be looking at 'White Balance'. It is important to get this right if we are to see any snow this year. Come along to learn all about the different shades of white.



Photo: Penumbral Lunar Eclipse by Martin Webb

The camera club charge only £3 per evening. You don't have to join the club, just turn up for the night.

Contact [enfordcameraclub@btinternet.com](mailto:enfordcameraclub@btinternet.com) for more information.

### COMING UP IN FUTURE EDITIONS

-We hope you enjoyed Lisa Goodship's "Impressions of India" that we printed in 2018. We have "A Taste of South America" (working title) from Lisa that we'll be publishing during 2020. Items like this give interest to the newsletter and we would love to hear from you.

**See page p3 for how to contact us and do it!**

A repeat of:

**"Meadows, Cress and Things that go BUMP in the Night"**



A History of Watermeadows, Watercress Growing, and Water Ram Pumps in the Vale of Pewsey

By Richard Giles in aid of Pewsey Heritage Centre

**Saturday 21<sup>st</sup> March at 7.30 pm at Pewsey Methodist Church**

Tickets £5 from Woottons or from Around-the-World, North Street, Pewsey

## ENFORD DEFIBRILLATOR

The defibrillator is in a yellow box on the wall of

Hill House, 9 Longstreet, SN9 6DD

Grid Ref SU142515.

It is located in the centre of Enford 25m north of The Swan next to the parish notice boards.

If you think you need to use the defibrillator call 999.  
The Emergency Service will give you the code to get into the cabinet.

YOU CAN READ MORE ABOUT IT AT [WWW.ENFORDNEWSLETTER.ORG](http://WWW.ENFORDNEWSLETTER.ORG) WHERE YOU



### CONTRACT BRIDGE/WHIST GROUP THE PHOENIX HALL, NETHERAVON

EVERY MONDAY AFTERNOON 2-4pm  
£2 PER SESSION. TEA/COFFEE INCLUDED.  
NO JOINING FEE. CAKES ACCEPTED!



WE'RE HERE FOR BEGINNERS TOO. TUITION BOOKS FOR SALE @£2.50.

EXPERIENCED PLAYERS WELCOME TO HELP TEACH BRIDGE TO BEGINNERS.  
THIS IS A FUN GROUP WHO PLAY FOR ENJOYMENT.

EXPERIENCED PLAYERS ARE ALSO WELCOME TO BRING A 4SOME (AND A TABLE) IF YOU  
HAVE FRIENDS WHO PLAY REGULARLY.

**Organiser: Alan Wood TEL: 01980 671265**



## Swan Craft

Do you enjoy making and creating?

If you enjoy hobbycraft,  
be it with wool, fabric, beads, felt, paper etc.  
then please come and join us at The Swan on Tuesday mornings  
10.00am - 12.00noon

Any craft medium you may be interested in will be very welcome.  
Feel free to bring along any samples of your creations to show and  
share (or just yourself).

Anybody who may be slightly interested is more than welcome!

**For more information contact Jacki Brightman—01980 671598**



# Enford Christmas Fayre



Thank you so much to everyone who attended and supported our much loved Church, here in Enford. This year we made a total of £1,518.10. This amount of money helps enormously with the running costs and upkeep of the church and is, of course, the main fund-raising event for the church.

We would like to thank again the ladies who served afternoon teas, sold tickets for the raffle and bottle stalls and manned the cake stall. A special thank you to everyone for providing the beautiful cakes and other goodies which were so generously donated to the cake stall; not forgetting the gentlemen and Margaret who helped to serve soup, hot dogs, beer and organising the car parking. A big, big thank you to Pete and Emma from the Swan for kindly donating the soup and beer. We would like to thank Katie and her family team for providing and running the magical, wonderful, Santa's Grotto. Thank you to Jane Young for donating the proceeds from her stall to the church, not forgetting Bridget Holden for painting and updating the notice boards advertising the Fayre.

The Christmas Fayre could not take place without your kind volunteering. Finally, a big thank you to Father Christmas for visiting us during his very busy season.....it was greatly appreciated.

We would like to wish you all a peaceful and happy new year.

Thank you again.

Paula, Mary and Lyn



**Do you have some time to spare to support local older people?**

Information about all our roles can be found:

⇒ on our website [www.ageukwiltshire.org.uk](http://www.ageukwiltshire.org.uk) or

⇒ by calling our office on 01380 727767

⇒ or emailing us at [volunteering@ageukwiltshire.org.uk](mailto:volunteering@ageukwiltshire.org.uk)

Whatever your reason for volunteering, we'd be delighted to hear from you.

**VS**

**VICTIM SUPPORT Have you been affected by crime?**

Victim Support offers free and confidential help and support to anyone affected by any crime.

The charity is independent of the police and you can access services whether or not the crime has been reported and regardless of when it happened.

For support, contact: Wiltshire Office: **01380 738878**

Freephone:**0808 281 0113** Email:[wiltshire@victimsupport.org.uk](mailto:wiltshire@victimsupport.org.uk)

[As an independent charity, we work for a world where people affected](#) by crime and traumatic incident get the help they need and the respect they deserve. To find out how you can help us help more people visit [victimsupport.org.uk/get-involved](http://victimsupport.org.uk/get-involved)



**COME AND JOIN US FOR AN EVENING OF DARTS**

**Every Wednesday 8.30pm at The Swan Hope to see you there!**



**FUN FOOTBALL SESSIONS (Age 5yrs to 11yrs)**



**EVERY SATURDAY MORNING (during school term time)**

**AT ENFORD VILLAGE HALL**

**10 until 11 am £2.50 a session**



For the dates for the next coaching sessions or further information please contact Steve Todd on 01980 670934

Any child who wants to take part should be aged between 5 and 11 years old and they should bring their own shin pads, suitable footwear and a drink.

**FA Level 1 and 2 Coaches, CRB checked**



# Little Phoenix Toddlers



We meet during term time  
every Friday

Choulston Close Community Centre, SP4 9RZ

9:30am to 11:30am

£1.50 per family

Parents, babies and toddlers all welcome

Contact Alice at [awootton1@hotmail.co.uk](mailto:awootton1@hotmail.co.uk)

## SPTA NEWS

For Salisbury Plain Training Area News, giving times of live firing, current and upcoming exercises go to

<https://www.gov.uk/government/publications/salisbury-plain-training-area-spta-newsletter>

## Netheravon Library

Netheravon Library (on High Street) is open on

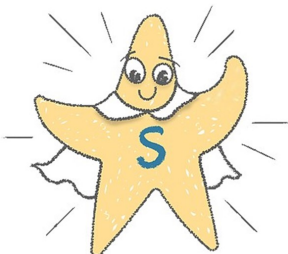
**Mondays 1pm to 7pm and  
Thursdays 1pm to 5pm.**

There is a good selection of children's and adults' fiction and non-fiction books.

DVDs and audio books can be hired and there is a computer for public use.

*Come and discover the delights of your local library.*

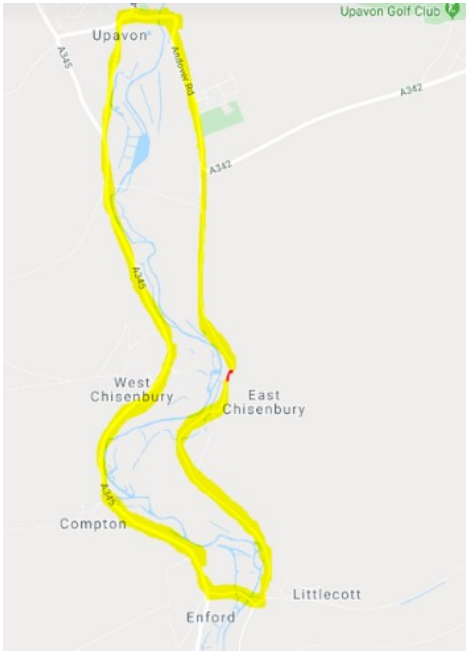
**Schoolreaders**  
improving literacy • increasing life chances



are looking for volunteers.

Please visit our website

[www.schoolreaders.org](http://www.schoolreaders.org) for more information to listen to children read in local primary schools.



**Wiltshire Council  
Temporary Closure of: C32 (Part),  
Enford (Ref: TTRO 6405)**

Notice is hereby given that the Wiltshire Council has made an Order to close temporarily to all traffic:

C32 (Part), Enford; from its property known as River House for a distance of approximately 75 metres in a northerly direction.

**To enable:** Wessex water to remove and replace a new bypass meter.

**Alternative route:** via C32 (unaffected length) – A345 – Enford Hill and vice versa.

**The closure and diversion route will be clearly indicated by traffic signs.**

This Order will come into operation on 24 February 2020 and the closure will be required until 06 March 2020. It is anticipated that the works will take the stated duration to complete depending upon weather conditions. Access will be maintained for residents and businesses where possible, although delays are likely due to the nature of the works. The Order will have a maximum duration of 18 months.

For further information contact Sophie Andrews (Wessex Water) on 03456004600.

**Sustainable Transport Group, County Hall,  
Bythesea Road, Trowbridge BA14 8JN**

**ENFORD VILLAGE – DOG MESS BINS**



**This image represents the bins available for bagged dog mess in the village.**

**This image represents the footpath from Coombe Lane to Fifield.**

**The bins have been paid for by the Parish Council who also pay for their regular emptying. This is to try keep the kerbs, walks and paths etc. around the village as clean and pleasant as possible for everyone to enjoy.**

**Please clean up after your dog and use the bins provided. Thank you.**

**ENFORD PARISH COUNCIL Abridged Draft Minutes meeting of 12 November 2019**  
**Full version available on newsletter website. (Future meetings p18)**

**20/002 Public Questions**

Mr & Mrs Hall-Smith and Mr & Mrs Poole-Warren attended the meeting to raise the matter of the proposed Royal Artillery Museum and event location in Netheravon. They had received a flyer through their letter boxes quoting alarming statistics and being very much against the project. This item had been delayed during the course of the meeting so WCllr Ian Blair-Pilling who has a greater knowledge of the matter would be present. Concerns of noise and light pollution as well as increased traffic and the proposed events were discussed at some length. WCllr Ian Blair-Pilling said that Planning Officers and Highways Officers would have their say and reminded everyone that it was the Highways Officers who refused to allow the building plans on the old mink farm site due to road safety issues. They will study the plans with the same subjective attitude. The plans are due to be available towards the end of January and it was agreed that WCllr Blair-Pilling would send out word when the planning application was on the website. Everyone would then be able to look at all the plans and write their opinions, concerns etc in the normal way. Netheravon Parish are due to hold a public meeting on the matter and Cllr Roberts suggested that, once the plans are available, Enford should also have a public meeting and send a Cllr as a representative to the Netheravon meeting.

**20/005 Unitary Council Matters**

WCllr Ian Blair-Pilling reported on current matters within Wiltshire Council:

i Flytipping.WC is cracking down hard on flytipping offences. It is not just those people who are caught doing it but if the appropriate paperwork cannot be produced, the person contracting the waste disposal will also be prosecuted with fines of between £2-3,000. There was an incident in Collingbourne Ducis last week of someone flytipping dangerous chemicals.

ii Porton Science Park. WC are planning to spend £5,000,000 on this project. It will in fact only be spending £2,500,000 as this is to be matched by the EU - probably the last opportunity to get it.

iii 'Stone Circle' is the name given to a holding company being set up by WC. There will be 3 subsidiary businesses (1) to acquire housing (2) to 'run' any spare land used by WC and (3) to create an energy company to supply the Council's electricity needs. This will not be for domestic use.

iv WCllr Ian Blair-Pilling congratulated Enford PC on its planning for and reaction to flooding matters and has mentioned EPC as an example in terms of pro-activity to parish issues.

**20/009 Matters Arising**

-Code of Conduct Complaint. The complaint against three Cllrs which has been reviewed twice by Wiltshire Council and who have twice declared no action should be taken, continues to retain some confidentiality issues. Those Cllrs who were accused of malpractice and dishonesty are happy to reveal themselves. They are Cllr Roberts, Cllr Hiskett and Cllr Cliffe-Roberts. The Complainant continues to remain anonymous. The Clerk read out the latest statement from Wiltshire Council:

*"I appreciate that it is frustrating for both you and the councillors concerned that you have been waiting this long for a decision on this matter. Therefore, in order to bring it to a close, I have this afternoon discussed it with the Deputy Monitoring Officer. He has determined that we are not able to approve the disclosure of the names of the parties in this case. Following representations that were made to us on this issue by the complainant, we checked the wording of the procedures that were in operation at the time that the complaints were made. The wording on the complaint form and guidance has recently been changed to allow disclosure of the full final decision notices, subject to consideration of any representations that are made by the parties. However, these complaints were originally made under the previous procedures and documentation, which were not sufficiently clear on this point to permit disclosure of personal details."*

Cllr Coulthard said that if the Complainant, who is obviously a Cllr themselves, had so little opinion of and complete lack of trust in their fellow Cllrs that there should be no place for them on the Council and they should stand down and let the Parish Council get on with their business unhindered by such unnecessary behaviour.

Cllr Cliffe-Roberts said "this statement only arrived today and I have not had time to consider my full response. Initially, however, I would like to express my disappointment in this response



from Wiltshire, coming as it has over 2 months after its Standards Review Committee upheld the earlier decision not to uphold the complaints of misconduct. To say the least, it is clear that Wiltshire's procedures are not fit for purpose. I would also wish to record my disappointment, but not surprise, that the Complainants themselves have not had the courage to reveal their identity."

A brief discussion was had and the suggestion that further dialogue with WC on the rights of the three mentioned Cllrs should be had as the current situation is not open or fair. All other Cllrs present agreed they would support such action.

-Cllrs Roberts and Hiskett had previously obtained more sand and bags for potential flooding issues. This was fortuitous as two houses have had flood water reaching their doors.

Assistance was given and thankfully the waters have now abated. Cllr Roberts reported that Wessex Water had spent 3 days over Christmas and New Year clearing the drains after raw sewage was appearing at the bottom of Water Lane. This problem has also now been cleared. Cllrs Waight, Roberts and Hiskett have had a meeting with Landmarc regarding trees that are leaning dangerously into the river. Landmarc agree that the problem must be dealt with but it cannot do so at present due to the waterlogged ground. Cllr Waight has offered his services as Flood Warden.

-New parish notice boards. The builder of the two new boards expects them to be ready by the end of January. These will be of plain oak and replace the current boards in Coombe and central Enford.

### **20/010 Finance**

The Clerk read out the bank reconciliation for December. At the beginning of the month there was a balance of £20,095.45 with total outgoings of £1,528.08 leaving a balance for January of £18,567.37. Over £1,000 of this figure was the 50% deposit required for the making of two new noticeboards (one for Coombe and one for central Enford) which should be with us by the end of January. There were no questions. Cllr Roberts suggested the previously agreed loan of £7,000.00 to the Parish Hall Management Committee (PHMC) would be made by direct payment to the Contractors of £6,768.00 (their invoice) and the balance of £232.00 to the PHMC current account. All Cllrs agreed.

### **20/013 The Parish Hall**

The contractors started on site on 16<sup>th</sup> December, notice to the neighbours having been given on 12<sup>th</sup>. During the week to Dec 20<sup>th</sup>, the contractors were able to remove the small amount of asbestos products from the site, in accordance with the approved Method Statement, and to erect scaffolding. A letter from a Building Surveyor was received under the instruction of Cllr & Mrs D'Arcy-Irvine raising issues on the demolition work. The Building Surveyor was referred to the full Consent permissions granted by Wiltshire Council. Work then ceased for Christmas – New Year and recommenced 6<sup>th</sup> January. As at today, the building has been removed and demolition almost concluded, but there remains some finishing-off work as some brickwork remains above ground. As part of the demolition contract, a stock-proof fence has been erected across the road frontage of the site. Cllr Cliffe-Roberts is in discussion with the contractor, but unfortunately he has left a telephone message to say that he is somewhat distracted, and not a little irritated, by having received a letter from the Health and Safety Executive, demanding full details of the works carried out, photographs etc, which he says is the result of an "anonymous" complaint. The contractor is not particularly enthused about returning to the site. Negotiations continue. A meeting of the PHMC will be called soon.

### **20/014 Roads and Highways**

Cllr Coulthard had attended the Community Area Transport Group (CATG) meeting on the previous evening. His contact at the Highways dept has, as requested, driven through the village to gauge whether or not Enford might be suitable for a 20mph limit. Research costs into this would be circa £650.00 which the Parish Council would have to pay and if Highways then agreed that there should be a 20mph limit through the village, it could cost the Parish a further £1,200.00. After discussion it was agreed that the research could be done before the next meeting of the CATG (in three months time) and he would then make the full application to the board. Cllr Coulthard proposed this course of action which was seconded by Cllr Hiskett with all other Cllrs in agreement.

-The highways dept are aware of the state of Water Lane and when appropriate, will relay.

-The Parish Steward is due to visit on 22<sup>nd</sup> January. If anyone spots any jobs that need doing, please contact Cllr Coulthard.

-Cllr Roberts reported that there is a lens off the light near the church car park.

### **Dates for Enford Parish Council Meetings in 2020**

Meetings are held in the **VILLAGE HALL** and start at **7.30pm** unless otherwise stated.

<b>DATE:</b>		<b>MEETING:</b>
Tuesday	10 <sup>th</sup> March	Parish Council
Tuesday	14 <sup>th</sup> April	Parish Council
Tuesday	12 <sup>th</sup> May	Parish Council A G M - <b>6.30pm</b> Annual Parish Meeting - <b>7.30pm</b>
Tuesday	16 <sup>th</sup> June	Parish Council
Tuesday	21 <sup>st</sup> July	Parish Council
Tuesday	8 <sup>th</sup> September	Parish Council
Tuesday	13 <sup>th</sup> October	Parish Council
Tuesday	10 <sup>th</sup> November	Parish Council
Tuesday	1 <sup>st</sup> December	Precept only meeting
Tuesday	8 <sup>th</sup> December	Parish Council



**The Mobile Library Service**  
visits Enford, Water Lane every four weeks on a Friday 3.45 – 4.10pm.



For adults, there is a large range of information, books and novels, ranging from the latest thriller to best-selling autobiographies, cookery and gardening. There is also a wide selection of large print and talking books.

If you are a parent with young children, you will find a great range of picture books and story CDs for them to enjoy; there are information books and plenty of exciting reading for older children as well.

There is access to the whole county stock through the Wiltshire Libraries online catalogue. Books, audio books and DVDs can be requested on the mobile or online and collected by customers from the mobile library. All children's stock can be requested free of charge with a small fee for adult requests. You can also use your membership card at any Wiltshire library and return books to the mobile library.

- ◆ It is free to join and there are no fines for overdue books on the mobile library.
- ◆ It's easy to join, just bring along proof of your name and address and the friendly Mobile Manager will sign you up straight away – they are always happy to help.
- ◆ The mobile has full accessibility and is fitted with a customer lift.

**Future stop dates:-**

**February 14, March 13, April 10**

**More information about the mobile library service is available online at**  
**<http://services.wiltshire.gov.uk/MobileLibrary/>**

## Advertising

### **TIM BUCKLAND BOILER MAINTENANCE**

*FOR SERVICE AND BREAKDOWNS*

*Friendly and efficient service  
Wide stock of boiler spares in stock*

***VERY COMPETITIVE PRICES***

*Also AGAs and RAYBURNS serviced*

***Tel: 01980 551386***



### **S.O. CHIMNEY SWEEPING**

- ◆ Camera Surveys
- ◆ Birds Nests Removed
- ◆ Fully Insured
- ◆ NCSA Registered
- ◆ Friendly Local Service
- ◆ Cows Fitted

**Call Sean on 07881 206536**

seanoades@hotmail.com

www.SO-chimney-sweeping.co.uk



# WILTSHIRE WILLOW: LOGS AND FIREWOOD FOR SALE

Seasoned and split logs, kindling and firewood  
Ideal for wood-burning stoves and open fires

**\*Trailer loads for £85.00      \*Weekend bags for £20.00**  
Kindling on request.

To order your free delivery, please call Martin on 07788 429772  
**DELIVER FREE WITHIN 5 MILE RADIUS OF ENFORD**

**M NASH & P WILKINS**

**ALL LANDSCAPING WORK  
UNDERTAKEN**

**\*FENCING\***

**\*PATIOS\*PATHS\*PONDS\***

**\*BRICKWORK\***

**\*HEDGE CUTTING\***

**\*GARDEN CLEARANCE\***

**\*GRASSCUTTING\***

**Tel: MIKE 01980 635324**

# AKER

FIRE & SECURITY

INTRUDER, FIRE, CCTV, CARBON MONOXIDE &  
SMOKE ALARMS, GATE AUTOMATION

We can offer a one off service or fault finding visit without  
the need for a long term contract call 07515358875 or email

[info@akerfireandsecurity.co.uk](mailto:info@akerfireandsecurity.co.uk)



## MOBILE HAIRDRESSER

Ring Donna

on

07711 579403

## Bits & Pieces (Durrington Ltd)

**BUILDING, GARDENING & DIY**

**PETS, PANELS, AGGREGATE**

37 - 39 Bulford  
Road, Durrington  
Wiltshire SP4 8DL

Tel: 01980  
655552

Proprietors: P & M Conn

## LB FOOT HEALTH

Offering home treatments for  
a variety of conditions  
including:

- ◆ Corns                      ◆ Hard Skin
- ◆ Nail Cutting            ◆ Diabetic Foot Management



Leanne Burden Dip FH MCFHP MAFHP  
T: 07824 797578

## THE MOTOR GARAGE LTD

Servicing, MoT tests and Repairs for  
Classic Cars as well as Modern

Telephone: 01980 670348

[www.themotorgarage.co.uk](http://www.themotorgarage.co.uk)  
[enquiries@themotorgarage.co.uk](mailto:enquiries@themotorgarage.co.uk)

Netheravon, Salisbury, Wiltshire, SP4 9RH



## **EQUIDAE EQUINE SERVICES**

18 The Bluestone Centre, Sunrise Way, Solstice Park, Amesbury, Wiltshire,  
SP4 7YR

T: 01980 258472 E: [equidae-equineservices@outlook.com](mailto:equidae-equineservices@outlook.com)

### **We sell a variety of**

Equine Feed, Supplements and Health Care Products

Field and Stable Accessories

High Viz items

Clothing

Equine and Small Animal Bedding

Poultry Feed, Oyster Shell and Grit

Dog Feed

Small Animal Feed

If you require something not in stock, let us know and  
we will try to get it for you.

### **Also Available**

Rug Wash and Reproofing Service

Horse Rug Repair Service

Horse Trailer Hire

Paddock Cleaner Hire



# *body* fitness studio **works**

Abbey Square Amesbury Tel:- 01980 625050

Affordable Personal Training !!

**Are you bored at the gym?**

**Are you tired of being left on your own?**

**Do you want better results?**

**You're not on your own at our club!**

***We teach, motivate and help you achieve  
your desired results***

**CALL US NOW ON: 01980 525050**



**Red Lion Freehouse**  
& TROUTBECK GUEST HOUSE



**Prix Fixe**

Our fab Prix Fixe menu is still available Wednesday—Friday lunch times & Wednesday, Thursday evenings!

2 courses for £20

3 courses for £25

We also offer sensible 'lunchtime sized' glasses of paired wines for each course

We would love to remind everyone that the pub is now open Wednesday – Sunday

01980 671124

# ENGLISH COUNTRY GARDENS

Garden & lawn maintenance, hedge and tree work, fences, driveways & weed control  
Garden waste removed.

Qualified, fully insured and licensed, 23 years experience

## WE SUPPLY

Mushroom compost, manure, Pro Grow, woodchips, gravel, stone & scalplings

Loads of logs by size: £80, £140, £180

All seasoned & dry native species.

Can stack

Bags of kindling: £4.50 or 5 bags for £20

**LOGS NOW  
AVAILABLE IN  
1& 2-TON BAGS**  
For convenient  
outside storage

**Call or text Nick on 07835299247**

**Free Delivery**

## Avon Security

MASTER LOCKSMITHS

### Engraving Service Now Available

- > Brass
- > Plastics
- > Aluminium
- > Glass
- > Trophies
- > Gifts

### Free Advice & Quotations On Securing Your Property & Belongings

- Key Cutting
- Locks Supplied & Fitted
- Access Control
- Safes
- PVCu Locks
- Master Key Systems
- Lock Repairs
- Door Furniture & Ironmongery
- Transponder Car Keys
- Keys To Code
- Watch Batteries & Straps
- Emergency Call Out Service



**01980 626000**

21, Salisbury Street, Amesbury, Wiltshire, SP4 7AW  
**www.avonsecurity net**



# Digger & Mojo

WOODBOROUGH

DECORATIVE ANTIQUES &  
VINTAGE EMPORIUM  
WORKSHOPS & CHRISTMAS GIFTS



*We restore Antiques + revamp your Furniture*  
*Mending • Painting • Reupholstery*




Shop/Office: 01672 881 510  
Email: [ask@diggerandmojo.com](mailto:ask@diggerandmojo.com)  
[www.diggerandmojo.com](http://www.diggerandmojo.com)

*"IT'S A KIND OF  
MAGIC"  
Salisbury Life Magazine*

WOODBOROUGH GARDEN CENTRE  
WOODBOROUGH, PEWSEY, WILTSHIRE, SN9 5PF







OPEN 7 DAYS 11am - 5pm



**Plumbing, Heating, Electrical & Renewable Energy**

Solar Thermal & PV, Air & Ground Source Heat Pumps, Ventilation, Boiler Replacements. Domestic, Commercial & Industrial Contractors. Family Business Established 1970.

**Free Estimates and Advice:**  
 Tel: 01980 670667 Fax 01980 670811  
[www.rgvengineering.co.uk](http://www.rgvengineering.co.uk) info@rgvengineering.co.uk

**MODERN & TRADITIONALLY DESIGNED MEMORIALS**

**M J SLY**  
 Monumental Stonemason

*New Memorials, Additional Inscriptions Restorations, Free Home Visits Free Brochure*

**Marlborough (01672) 516797**  
 Email: [martin@mjsly.co.uk](mailto:martin@mjsly.co.uk)  
 Website: [www.mjsly.co.uk](http://www.mjsly.co.uk)

*Workshop & Showroom at Pelham Court, London Road, Marlborough, Wiltshire*

Oil Boiler Servicing  
 Commissioning & Repairs

**Call Graham C Brown & Son**  
**01980 622737**

Fully Qualified  Fully Insured

Experienced Technician

**Advertise in the Newsletter**

♣£22 per 1/8 page ♣£48 per 1/3 page

♣£60 per 1/2 page and ♣£100 per full page for 10 issues

**“PAMCAKES”**

*Bespoke Cakes for your special occasions (any age group). Traditional and 3D, cupcakes and some Wedding Cakes. See my FB page “pamcakes of netheravon” for more details & website [pamcakesofnetheravon.co.uk](http://pamcakesofnetheravon.co.uk) [pamcakes@writeme.com](mailto:pamcakes@writeme.com) or call 07919656141*

**SEAN DEVINE**  
**PAINTER & DECORATOR**

**Free estimates.** 

**Fully insured.** 

**For local professional service call:**  
**07870 454884 or 01980 630864**  
**email: [sean.devine2@outlook.com](mailto:sean.devine2@outlook.com)**



**Bespoke Fashion Design and Dressmaking for any occasion.**  
 For more details contact  
 Ramona Edwards  
[rhensel85@gmx.de](mailto:rhensel85@gmx.de) // 07827597084

**KD WORSDELL**

**Carpentry & Joinery  
 Building Works & Maintenance  
 Bathrooms and Kitchens**

**Please Call**  
**01980 630545**  
**Or**  
**07759 586162**



# Jonathan Green Antiques

## **We Buy & Sell**

Silver  
Jewellery  
Gold Coins  
Anything interesting  
Home Visits no obligation

## **Repair & Restoration**

Silver  
Jewellery  
Hand Engraving  
Machine Engraving  
Remodelling of Jewellery

**You can find us at the rear of the ground floor.**

The Antiques Market  
37 Catherine Street  
Salisbury  
SP1 2DH  
01722 332635

Email: [jg@jonathangreenantiques.co.uk](mailto:jg@jonathangreenantiques.co.uk)



Coombe based wood turner offering unique, elegant designs in a variety of domestic and exotic hardwoods.

Commissions taken for special gifts that can be personalised with brass or hallmarked silver discs set into the underside of the piece.

Many items in stock, including a variety of bowls, platters, vases, boxes and decorative trees.



Contact: George Shapland

01980 671321

[george@butterwood.co.uk](mailto:george@butterwood.co.uk)

[www.butterwood.co.uk](http://www.butterwood.co.uk)

# VILLAGE HALL AND RECREATION GROUND



## Contact Details:

**Booking Officer 01980 670501**  
**enfordvillagehall@btinternet.com**  
**www.enfordnewsletter.org**

**Chairman 01980 670501**  
**Grounds Officer 01980 670210**  
**Maintenance Officer 01980 670526**

**Private Parties**  
**Planning a children's party?**  
**Celebrating a special birthday or anniversary?**  
**The hall is the perfect venue for weddings and parties!**

Day	Activity	Time	Contact
Mon	Yoga Beginners Yoga Intermediate	6.00pm – 7.15 pm 7.30pm—9.00pm	Emma Petitt 01980 670510 yoga@emmapetitt.co.uk
Tues	Enford Film Club	4th Tuesday in the month Doors open 7.00 pm	Judy D'Arcy-Irvine 01980 670501
Wed	Short Mat Bowls	7.30 pm – 10.00pm October to March	David Spencer 01980 670526 spencersgb@yahoo.co.uk
Thu	Pilates	8.45 am – 9.45am	Nicci Caswell 01980 625245 nicci@thecaswells.uk
Thu	Camera Club	8.00 pm – 9.00 pm 1st Thursday in the month	Martin Webb 01980 670537 webb14@btinternet.com
Thu	Gardening Club	7.00pm – 9.00 pm 2nd Thursday in the month	Fanny Middleton 01980 671645 fannysurtees@btinternet.com
Fri	Yoga	6.30 pm - 8.30 pm	Andi Baburske Mob 07935 072893 email <a href="mailto:jackiebrown_2@gmx.de">jackiebrown_2@gmx.de</a>
Sat	Children's Football Coaching Sessions	10.00am -11.00 am Recreation Ground	Steve Todd 01980 670934 STODD@qinetiq.com
Sun	Netheravon Wanderers Football Club (NWFC)	Home matches 10:30am Kick off	Marc Williams 07500 785116 email: <a href="mailto:sundayclub2019@yahoo.com">sundayclub2019@yahoo.com</a> Facebook: Netheravon Wanderers Football Club

## VILLAGE COMMITTEES

### PARISH COUNCIL

<b>Chairman</b>	Richard Roberts	671055
Vice Chairman	Mark Hiskett (PROW)	670955
PCC Representative		
Public Rights of Way		
Planning	Peter Cliffe-Roberts	671676
Parish Clerk	Elizabeth Harrison	670034
Playpark/Village Amenities and Youth Representative	Jane Young	670532
Tidworth Area Board and Village Hall Representative	Anthony D'Arcy Irvine	670501
No specific role	Bruce Waight	670113
No specific role	Pat Holdway	671792
No specific role	Vick Exley	07870 189235
Steward contact	Rob Coulthard	670967

### NETHERAVON SCHOOL

<b>Chairman of Governors</b>	Mr Richard March
<b>Head Teacher</b>	Mrs Gillian Durrans

### NEWSLETTER

<b>Chair</b>	Diane Christie-Rundle
<b>Vice Chair</b>	Jane Young
<b>Secretary</b>	Ann Houghton
<b>Treasurer</b>	Roz Perry
<b>Advertising</b>	Jeni Scott-Dalglish
<b>Village Hall Rep</b>	Jacqui Elkins
<b>Parish Council Rep</b>	Jane Young
<b>Compiler:</b>	Sue Cosgrove
<b>Committee Member</b>	Gay Monk

### PAROCHIAL CHURCH COUNCIL

<b>Church Wardens</b>	Sue de Candole
<b>Treasurer</b>	Tom Hunter
<b>Secretary</b>	Tom Hunter
<b>Council Members:</b>	Mary Burdick
	Anastasia Dubovic,
	Fanny Middleton
	Tim Edwards
	Michael Whitaker

### VILLAGE HALL

<b>Chairman and Booking Officer</b>	Judy D'Arcy-Irvine (670501)
<b>Vice Chairman</b>	<b>Vacant</b>
<b>PC Rep</b>	A D'Arcy-Irvine
<b>Secretary</b>	<b>Vacant</b>
<b>Camera Club</b>	Jane Young
<b>Newsletter</b>	Jacqui Elkins
<b>Property Officer</b>	David Spencer
<b>Grounds Officer</b>	Hamish Scott-Dalglish
<b>Gardening Club</b>	Rosemary Cox
<b>Short Mat Bowls</b>	David Spencer
<b>Junior Football Club</b>	Ollie Stagg
<b>Youth Club</b>	

<b>YOUR DIARY February 2019 (For regular Village Hall dates, see page 26)</b>		
1st	Sat	Youth football 10am V. Hall but see p29/Panto Durrington 2pm and 7pm
2nd	Sun	Holy Communion, 9.30am Enford Church
3rd	Mon	Netheravon Library 1pm-7pm/Bridge & Whist Phoenix Hall, N'avon 2pm
4th	Tue	SwanCraft 10am The Swan/Quiz Night 9pm The Swan
5th	Wed	Exercise night 6:30pm V. Hall/Short Mat Bowls 7:30pm V. Hall/ Darts' night 8:30pm The Swan
6th	Thu	<b>Black box, Blue bin</b> /Hub in the Pub 9:30am The Swan/ Netheravon Library 1pm-7pm/Camera Club V. Hall 8pm
7th	Fri	Little Phoenix Toddlers, 9:30am, Phoenix Hall, Netheravonbut see p14/ Youth Club Phoenix Hall, Netheravon 6pm/Yoga 6:30pm V. Hall
8th	Sat	Youth football 10am V. Hall but see p26/Jumble Sale 2pm V. Hall
9th	Sun	Team Service, Milston 10:30am
10th	Mon	Little Phoenix Toddlers, 9am, Phoenix Hall, Netheravon/ Netheravon Library 1pm-7pm/Bridge & Whist Phoenix Hall, N'avon 2pm
11th	Tue	SwanCraft 10am The Swan/Parish Council Meeting 7:30pm V. Hall/ Quiz Night 9pm The Swan
12th	Wed	Exercise night 6:30pm V. Hall/Short Mat Bowls 7:30pm V. Hall/ Darts' night 8:30pm The Swan
13th	Thu	<b>Household Waste</b> /Hub in the Pub 9:30am The Swan/ Netheravon Library 1pm-7pm/Gardening Club V. Hall 7pm
14th	Fri	Little Phoenix Toddlers, 9:30am, Phoenix Hall, Netheravonbut see p14/ Youth Club Phoenix Hall, Netheravon 6pm/Yoga 6:30pm V. Hall/ Mobile Library 3:40pm Water Lane
15th	Sat	Youth football 10am V. Hall but see p26
16th	Sun	Breakfast Church 9:30am Enford Church
17th	Mon	Little Phoenix Toddlers, 9am, Phoenix Hall, Netheravon/ Netheravon Library 1pm-7pm/Bridge & Whist Phoenix Hall, N'avon 2pm
18th	Tue	SwanCraft 10am The Swan/Film Club V. Hall 7pm for 7:30pm/ Quiz Night 9pm The Swan
19th	Wed	Exercise night 6:30pm V. Hall/Short Mat Bowls 7:30pm V. Hall/ Darts' night 8:30pm The Swan
20th	Thu	<b>Black box, Blue bin</b> /Hub in the Pub 9:30am The Swan/ Netheravon Library 1pm-7pm
21st	Fri	Little Phoenix Toddlers, 9:30am, Phoenix Hall, Netheravonbut see p14/ Youth Club Phoenix Hall, Netheravon 6pm/Yoga 6:30pm V. Hall
22nd	Sat	Youth football 10am V. Hall but see p26
23rd	Sun	Evensong, 6pm Enford Church
24th	Mon	Little Phoenix Toddlers, 9am, Phoenix Hall, Netheravon/ Netheravon Library 1pm-7pm/Bridge & Whist Phoenix Hall, N'avon 2pm
25th	Tue	SwanCraft 10am The Swan/Film Club V. Hall 7pm for 7:30pm/ Quiz Night 9pm The Swan
26th	Wed	Exercise night 6:30pm V. Hall/Short Mat Bowls 7:30pm V. Hall/ Darts' night 8:30pm The Swan
27th	Thu	<b>Household Waste</b> /Hub in the Pub 9:30am The Swan/ Camera Club V. Hall 8pm/Netheravon Library 1pm-7pm
28th	Fri	Little Phoenix Toddlers, 9:30am, Phoenix Hall, Netheravonbut see p14/ Youth Club Phoenix Hall, Netheravon 6pm/Yoga 6:30pm V. Hall
29th	Sat	Youth football 10am V. Hall but see p26