

Enford Newsletter

What's Happening In and Around Enford



December

and

JANUARY

2020

2021



USEFUL NUMBERS

EMERGENCY SERVICES

DOCTORS

DURRINGTON	Avon Valley Practice Surgery	01980 652378
DURRINGTON	Cross Plains Surgery	01980 652221
UPAVON	Avon Valley Practice Surgery, Fairfield	01980 630221

HOSPITAL

SALISBURY DISTRICT HOSPITAL	01722 336262
-----------------------------	--------------

POLICE

POLICE	101
--------	-----



OTHERS

ELECTRICITY	105
ENVIRONMENTAL AGENCY	0800 80 70 60

FLOOD LINE	0345 988 1188
GAS	0800 111 999

DURRINGTON LINK

LINK (Durrington & District)	01980 594857
------------------------------	--------------

SCHOOLS

DURRINGTON, Avon Valley Secondary School	01980 652467
NETHERAVON, All Saints' C of E Primary	01980 670339
RUSHALL, Rushall C of E Primary	01980 630360
PEWSEY, Pewsey Vale Secondary School	01672 565000

WILTSHIRE COUNCIL

BIN COLLECTIONS	0300 456 0102
-----------------	---------------

<http://www.wiltshire.gov.uk/rubbish-collection-day>

HOUSEHOLD RECYCLING CENTRES (HRC)



HQ SALISBURY PLAIN TRAINING AREA

999 MOD Police Control Room - Crime in progress

01371 854444 - MOD Police Control Room - *Non-emergency crime on SPTA only*

01980 674951 to call 24hour Range operations - *To report suspicious activities or dangerous issues.*

01980 620819 Complaints Line - *The only way to make a complaint.*

0800 022334 - Landmarc National Service Centre - *To report damage to training area or fly-tipping*

Health & Safety reminder for all Military Training Areas & Ranges:

Do not touch or tamper with Military debris.

Wash your hands before you eat.

Clean your footwear before you enter your car or home.

CONTENTS

Useful Telephone Numbers/ Crime Reduction	2
Contents/Next Newsletter Deadline/ Masks Stop Update/Spurious Santas/ Event Advice	3
Team Vicar's Musings/Online Services	4
Church Services/Parish News	5
Remembrance Day Wreath Laying	6
Camera Club/Cancellation/Wanted Ad	7
Gardening Club/Defibrillator	8
Christmas Lunch cancellation/ Victim Support/Newsletter Future	9
Thank You/Seasonal Adverts	10-12
Tree Light Big Switch-on/SPTA News	13
Parish Council Minutes	14-15
Christmas Tree Tips/Congratulations/ Fly Tippers	16
Avoid Covid scams/Prospect Event	17
Prospect Events	18
Prospect Event/CrimeStoppers	19
Local Interview	20
Gardening Tips December and January	21
A Taste of South America	22-24
Village Hall Update/Library Notice/Age UK/ Enford Community Fund	25
Parish Council Meeting Dates/Dog Mess Bins	26
Advertising	27-36
Village Hall Diary	37
Village Committees	38
December Diary	39
January Diary	40

Ten spurious Santas have been hidden around the magazine. Can you find them?
Answers on page 29

The next* Newsletter deadline is FRIDAY

22nd January 2021

Emails are preferred but all items for inclusion, whether they are handwritten, typed or via e-mail,

MUST be submitted by the deadline date.

These articles may be handed in to any Newsletter Committee member.

**Please send e-mails to
enfordnewsletter@gmail.com**

Enford Newsletter Committee reserves the right to reject or omit from publication any material that is considered by majority of Committee Members to be detrimental to any person or which is not in the best interest of the community as a whole.

All letters and articles must be signed, but the Committee will withhold the name of the writer if this is requested.

Masks, Books&DVDs 🧐🧐🧐

In addition to the fabulous masks available at Beckenreid, Longstreet, there are also books and DVDs for swapping - take a book/ DVD and leave one in its place...maybe the perfect antidote to the long nights of lockdown!

Donations of books and DVDs gratefully accepted - just leave them at the Mask Stop.



Event Advice

Given the current fluctuations in Government advice please contact the organisers before attending any event advertised within these pages.

A word from Philip Bromiley our Team Rector :



God with us

Christmas 2020 will truly be a Christmas like no other. Hopefully, it will go ahead, despite the best efforts of the virus and hopefully, this year we take an extra moment or two to ponder again its real significance. I wonder, have you felt nearer to God this year, or further away? The Christmas message is a powerful one: that regardless how we feel, God is with us.

Children love Christmas. Here are some alternative Christmas Carols overheard by teachers in School: 'O come, froggy faithful'; 'On the first day of Christmas my tulip gave to me'; 'Noel. Noel, Barney's the king of Israel'; 'Sleep in heavenly peas'; 'Oh, what fun it is to ride with one horse, soap and hay'; and 'We three kings of porridge and tar'.

The first thing I want to say is this...Christmas isn't just for children and not even for families. Christmas is for everyone. We all need to know that God is with us. The lonely, the fearful, the bereaved, the lost, the hungry, the sick.... In all circumstances, God is with us, alongside us, in the middle of the mess as well as the guest of honour at the table on Christmas Day. God is with you and in my book, no virus can come close to diminishing this message.

What does your heart say when you gaze into the Crib scene? Does your heart identify with a God who meets us where we are, as vulnerable human beings? Does your heart sense the tremendous risk that God took in sending us His only Son? Does your heart see this little boy's future of thorns and nails?

An artist was painting a winter scene. The canvas soon revealed a snow covered landscape with pine trees and a tiny log cabin in the distance. As the picture was completed, day turned into night, and the artist grew tired. The entire scene was covered with semi-darkness and a grim log cabin was barely visible in the shadows. The artist dipped his brush in the yellow paint of his pallet, and with a few strokes placed, in the cabin window, the warm glow of a lamp. The gold rays of the lamp reflected on the fresh snow and suddenly, the little light changed the entire tone of the picture. Two thousand years ago, on the world's canvas, a tiny baby came to shine a light into a dark world. That light continues to shine across the barren landscape and offers all the hope of eternal warmth and security.

Jesus came to bring hope. My daughter told me once that, "Jesus came to save us from the bad stuff". It's true. Open your heart to Him and let His light shine into you. He offers love, forgiveness, peace, joy and hope. Emmanuel means in Hebrew, "God with us", yesterday, today and forever. May our hearts receive a glimpse of eternity this Christmas and into the New Year.

Rev'd Philip Bromiley (Team Rector)



SERVICES AT ALL SAINTS CHURCH, ENFORD



The Avon River Team will be providing prayer and worship ideas for people to do in their homes. These will be found on our website: www.avonriverteam.org.uk together with Services in the 7 churches in the Avon River Team, and Minutes of PCC meetings.



CHURCH SERVICES FOR DECEMBER 2020



6th	Holy Communion	9:30am
13th	Evensong	6.00pm
20th	Informal Christmas Readings and Music	9:30am
25th	Christmas Day Holy Communion	9:30am

PARISH NEWS

Advent greetings from Enford All Saints. We are looking forward to the end of lockdown in December and especially to be able to celebrate Christmas in our wonderful church building.

Though there is no Midnight Mass on Christmas Eve this year, there will be Christmas Day Holy Communion Service at 09:30 am. To make it a success, social distancing would have to be observed and one-way system enacted. Please arrive at least ten minutes before the service to be allocated a numbered row. Use of masks is encouraged.

Please do not attend if you are experiencing any the COVID-19 symptoms.

In the meantime, the . We welcome you to come and visit.church continues to be open twice a week for individual prayer and reflection – Thursdays 9am - 12noon and Sundays 1pm - 4pm

The monthly service schedule for December is listed above. We shall post January schedule on the church notice board as soon as we are able. If you cannot come to one of the services , but would like to join from home, a variety of resources, including pre-recorded services, video links and materials for home worship are available on **Avon River Team website** www.avonriverteam.org.uk

Services in the 7 churches in the Avon River Team, and Minutes of PCC meetings, can be found at: www.avonriverteam.org



A very Happy Christmas
from
The Avon River Team
of Churches.

Do keep an eye on our website for any changes to the services detailed in this publication.

www.avonriverteam.org.uk/services



[illegible]

Although there was no formal Remembrance Service two wreaths were laid, one by Lt Col. Venetia Field, and the other representing the Parish Council Shona Stewart who whilst not a councillor accepted the invitation to lay the wreath, on behalf of the team making and selling the poppy masks.





Enford Camera Club



Due to the Coronavirus lockdown the Enford Camera Club have taken the decision to temporarily suspend our meetings until March 2021.



Photo: Passing Time by Martin Webb

We are also looking for new members of the camera club. If you have any interest in photography, why not come along. Please look out for our notice in the March issue of the newsletter.

*****Please note the new email address*****

Contact enfordcameraclub@gmail.com for more information.



ENFORD CHURCH CHRISTMAS FAYRE

Due to the current situation with Covid 19, unfortunately there will be no Christmas Fayre in the church this year.

Thank you for all your continued support over the past years and hopefully, we look forward to seeing you all next year.

WANTED

Barn, farm buildings or silos with access ideally with an acre plus for a new orchard in the Upavon/Enford/East Chisenbury area.

Contact: Sam 07843556104



ENFORD GARDENING CLUB



**There will no meeting in December.
The next planned meeting will be Thursday 14th January 2021
AGM & Social.**

Entrance is free and there will be Wine and Canapés.



Do come and join us. All are very welcome.

We hope you will come and give us your thoughts and ideas for the future – hopefully not affected by COVID-19.

We realise that we cannot be sure as to whether we will be allowed to meet in January 2021, but please put the date in your diary anyway. Gardening Club meetings will be back! Please keep an eye out for future updates.

As always, meetings are at **Enford Village Hall, SN9 6DD**
Lifts can be arranged, please ask.



Starting time 7.15 pm.

Doors open 7.00 pm

Further details from Fanny Middleton, 01980 671645

email: fannysurtees@btinternet.com



ENFORD DEFIBRILLATOR

The defibrillator is in a yellow box on the wall of

Hill House, 9 Longstreet, SN9 6DD

Grid Ref SU142515.

**It is located in the centre of Enford 25m north of
The Swan.**

**If you think you need to use the defibrillator call 999.
The Emergency Service will give you the code to get into the cabinet.**

**YOU CAN READ MORE ABOUT IT AT WWW.ENFORDNEWSLETTER.ORG WHERE YOU
WILL ALSO FIND A LINK TO A SHORT VIDEO SHOWING YOU HOW TO USE IT.**



LADIES of Enford, Chisenbury and Coombe Sad, but not entirely unexpected news

Due to the current uncertain circumstances (and following discussions with Pete and Emma), the annual ladies Christmas Supper will not be held this year.

We are very sad, have left it as late as possible to make the decision, but hope you all understand that we cannot run the event in the way we all enjoy.

VS

VICTIM SUPPORT Have you been affected by crime?

Victim Support offers free and confidential help and support to anyone affected by any crime.

The charity is independent of the police and you can access services whether or not the crime has been reported and regardless of when it happened.

For support, contact: Wiltshire Office: **01380 738878**

Freephone: **0800 281 0113** Email: wiltshire@victimsupport.org.uk

As an independent charity, we work for a world where people affected by crime and traumatic incident get the help they need and the respect they deserve. To find out how you can help us help more people visit victimsupport.org.uk/get-involved



Enford Newsletter Going Forward

The Enford Newsletter Committee is thrilled to report that we have had an excellent response so far to our plea for help and so we can confirm the continuation of the Newsletter.

We'll be having a meeting with prospective Committee Members in January. Feel free to let us know, by the end of December, if you'd like to apply for a place on the Committee.

Many thanks to those who have already put their names forward. We are delighted.





Very Important Message of Gratitude From the Enford Newsletter Committee

This has been a difficult year for everyone and we would like to recognise the efforts of those not on the Committee who are our unsung heroes!

Kim Riche runs our website, often having amendments or additions to upload at short notice but is ever willing and helpful.

All our **Distributors** have carried on as usual and ensured prompt delivery of your printed Newsletters despite lockdowns and other Covid related issues.

Our printers, **Darren and Paul** from Sarum Graphics, who have continued to work under difficult conditions, maintaining their wonderful friendly, helpful attitude throughout.

The **Enford Camera Club** and the **Parish Council** who generously donate to Newsletter funds.

We would like to wish them all a Very Happy Christmas, a peaceful and healthy 2021 and to say a huge thank you to them all. Without them, there would be no newsletter.





Nectar of the Dodds

HONEY ● BEES ● BALMS

PRICES FOR MY LOCAL HONEY

8 OZ JAR £4 ● 12OZ JAR £5 ● 1LB JAR £6

❄ CHRISTMAS GIFT BOX ❄

1LB HONEY, 2 BEESWAX CANDLES £12

Contact Janet on 07768140027

Feel free to pop over: 77 Fifield, Enford, SN9 6DQ

 Find us on Facebook NectaroftheDodds



GIN EVA Gin Range

The Essence of Majorca in a bottle

Great Christmas stocking & pressie ideas.

**NICHE
ALCOHOL
SUPPLIES**



Missing that holiday feeling, try these Gins.



**Free Delivery to your
Home – use code
ENFORD**

View our website to see amazing Christmas Gifts

www.nascorporation.co



**NICHE
ALCOHOL
SUPPLIES**



Knut Hansen Dry Gin

Behind the piercing exterior of the tattooed, scarred sailor is a vibrant & charming gin that is Refreshingly subtly sweet & fruity with Juniper & herbaceous notes.



Ron Piet Rum has soft fruity notes from the finest sugar cane. Aged in Panama for 10 years in Bourbon barrels

**Free Delivery to your
Home – use code
ENFORD**



For amazing Hand crafted Gin and Rum - Great Christmas gift ideas.

View our website

www.nascorporation.co

Looking for a unique gift this Christmas?

Based in Coombe, I am a professional wood turner offering a wide range of hand turned wooden items made from a variety of local and exotic woods

There are many items available to buy from my website including a range of bowls, platters, vases, boxes and decorative trees

I am always delighted to discuss making something to your own design even using your own wood if you have something special in mind

Vouchers are also available for training and taster sessions where I provide one to one tuition specifically tailored to your requirements



01980 671321

george@butterwood.co.uk

www.butterwood.co.uk



Red Lion Freehouse
& TROUTBECK GUEST HOUSE



Bakery on a Bar

Every Sunday 9am till 1pm

Join us every Sunday morning for coffee and a breakfast treat to enjoy here or take away. Team pastry is lovingly producing hand-made pastries, fresh doughnuts, cinnamon buns and so much more...

Also available our collection of wacky ice creams and other bakery bits.

Christmas at Red Lion

We will be open whenever we are permitted and are raring to go. Christmas Day we will be closed, but open as much as we can the rest of the month.

We will be preparing Beef Wellington with all the trimmings for collection on Xmas Eve.

£120 for 4 or £180 for 6

Everything ready to serve in 20 minutes!

Please order by Friday 18th Dec

01980 671124

www.redlionfreehouse.com



Village Christmas Tree Lights

Big Switch On!

11 December 2020



There will be a grand lights switch on held at **6.15PM** by the bus stop where the tree will be placed again.

Everyone is welcome and mulled wine and mince pies will be available. There may also be a few Christmas Carols

There will also be a Children's Christmas Outdoor Decoration Competition.

All who enter will receive a treat and the decorations will be used to decorate the bus stop and tree. Bring the decoration on the evening by **5.45PM** to enter the competition. The winner will officially switch on the lights.



SPTA NEWS

For Salisbury Plain Training Area News, giving times of live firing, current and upcoming exercises go to
<https://www.gov.uk/government/publications/salisbury-plain-training-area-spta-newsletter>

ENFORD PARISH COUNCIL ABRIDGED REVIEW OF BUSINESS **held by email and published on TUESDAY 10th November 2020**

1. Police Matters and Neighbourhood Watch

The most recent Police Report has been published and circulated to all Cllrs. There were no incidents recorded for Enford.

Cllr Clark has looked at the latest e-newsletter for NeighbourhoodWatch and their focus this month is on 3 steps to stay ahead of cybercrime:

1. Create a different password for your email address(es)
2. Use 3 Random Words
3. Turn on two-factor authentication (2FA) - this means adding an extra security layer to the login process.

They also have a very informative section on avoiding covid-19 scams.

<https://www.ourwatch.org.uk/news/neighbourhood-watch-response-covid-19/be-aware-covid-19-scams-and-crimes>

2. Matters Arising

Parish Council Website. The early stages of admin. and signing up with the host company (Cloud Next) have been completed and the production company have the 'green light' to start to build the site. They have informed me that it will most probably take about 3-4 weeks as we are 9th on their list!

ROSPA Playpark Safety report. This was circulated to all Cllrs for their consideration.

It is felt the report is realistic and identifies the main issues of which we should be aware. It is suggested that the fencing be the first matter to be dealt with (after lockdown) and further replacement/new equipment as and when the finances are able to support it. Grants and contributions from County are unlikely in these times and so self-funding must be the way forward.

East/West Chisenbury bridge inspection:

Cllr Hiskett reported that there was no additional information on this to date. An engineer was intending to visit and inspect the bridge, but there has been no further information. He has requested an update from WCC.

Standing down of Garden Services for Winter. All Cllrs agree to this proposal and the Clerk will inform the Contractor.

3. Residents Issues Raised

Cllr Clark reported that a resident from Fifield had notified her that 3 out of the 4 streetlights are not working. The one that is working is covered in foliage and so is on continuously (it is an LED one). Cllr Coulthard is kindly submitting this notification with the photos of the location via the App.

4. Planning

There are no outstanding Planning Applications to be discussed however Cllr Cliffe-Roberts asked if there was any news on the old milk site. As requested at the October meeting, the Clerk sent a letter of objection to a Transport Licence being issued to the site owners for two lorries – this was also emailed for speed. All objections needed to be in by 31st October and this was certainly done however no acknowledgement of receipt has yet been received despite a request.

The Clerk is still chasing WC Enforcement for any follow up on the extra barn being built in East Chisenbury. Again, there is no news as yet.

5. Playpark

The previously agreed work party to deal with the fencing issues has been postponed until after the current lockdown. Following the ROSPA Report it has been agreed that equipment should be replaced as and when funding is available to do so.

The Playpark fundraising account currently stands at £4,542.11.

6. The Parish Hall

Cllr Cliffe-Roberts reports that the request for Pre-application advice was submitted on 27th August, it was acknowledged on 17th September and nothing has been heard since then.

Roads/Highways

Cllr Coulthard has requested that if people wish to report a highway issue directly to him, can they please give accurate locations and (if possible) photos of the item needing attention. He will then report it through the Wiltshire Ap.

Correspondence

Any/all correspondence received has been circulated and discussed. There is no new correspondence.

-Gareth Holden of East Chisenbury has emailed the Council regarding an apparent imbalance of 'benefits' to Enford village rather than the other areas that make up the Parish – East Chisenbury, West Chisenbury, Littlecote, Coombe, Fifield, Compton and New Buildings. All areas of the Parish are entitled to raise issues with the Parish Council and most residents do so. The Parish Council acts on/supports/assists where possible with all matters raised. The Parish itself extends quite heavily into the MoD training areas on either side of the River and the villages that make up the Parish stretch along the River which means there is no focal point, just the most centrally located village of Enford which also has the Parish Church and The Swan.

Any Other Business

-Enford Newsletter. Concern was raised by the Newsletter Committee that due to their reduced numbers they may have to close the Newsletter and website.

Cllr Young reported that 5 people have come forward to join the Newsletter Committee. The next issue which will cover the December/January period will go ahead and a first meeting with the new recruits will happen in January.

-Remembrance Sunday. Cllrs Roberts and Hiskett have put up the poppies and will remove these a week after the 11th. There is no service on the 8th due to lockdown however Shona (poppy mask maker) will lay the wreath at 11am on behalf of the PC.

Cllr Cliffe-Roberts wondered whether there was any merit in trying to cheer up the village children (and adults) this Christmas by encouraging the village to make a special effort with lights etc, perhaps a competition for the best / brightest decorated house in the village. This might link in with the tree decoration and turning on of lights.

- Cllr Coulthard suggested that the Parish Council agree a small gift (max £15) for Gabriel, the Parish Steward, who has gone over and above his requirements on occasions to help put things right in the Parish. No Cllrs have objected.

Date of next Meeting

PRECEPT ONLY 1st December 2020. Due to the current lockdown not finishing until 2nd December, almost all Cllrs have agreed the plan to combine this meeting with one due to take place a week later on

Tuesday December 8th at 7.30pm in the Village Hall.



Christmas Tree Tips from Tony Archer at Superior Plants

December is just around the corner and only a few weeks to go until Christmas Day. Hopefully we will all be able to spend time with our loved ones enjoying the festive period. Christmas Trees are an important part of the festivities and I wanted to offer up some tips on how to keep them looking their best.

1. Firstly a cut tree will dry out in a warm room so follow these points and you will help to prolong the trees life.
2. Try to delay putting the tree in the house until the latest point possible as it does not like the heat.
3. Keep the tree away from any heat source or fire as this will dry the tree out quicker than in a cool area.
4. Choose a tree that is less likely to drop its needles i.e a Nordmann rather than a Norway Spruce.
5. Cut the stem before putting it into the house, just take a few inches off of the bottom of the stem to allow water to be taken up by the tree
6. Keep the bottom few inches of the stem in water as once it is cut it is starting to die and resting it in water will help to keep it fresh.
7. If you buy a potted tree, keep it watered throughout the time that it is in the house
8. Acclimatise the potted tree when Christmas is over as it will be soft after being in a warm house
9. The Christmas Tree industry is seen as an important resource for reducing Carbon due to the quantity of trees planted each year.
10. Enjoy the time with friends and family, hopefully we can look forward to an easier 2021.

We all wish you a merry Christmas and Happy New year and look forward to seeing you in January for the start of a new Year.

Superior Plants are a family-run nursery and general tree, Shrub and Plant supplier in Market Lavington.

Oh boy!
Oh boy! Oh boy!



***Congratulations to Ed and Charlotte Burdick on
the birth of their baby son, Bertie.***

A lovely little brother for Evie.

Wiltshire Council "We're Targeting Fly-tippers Campaign"

Wiltshire Council has launched a reward campaign to reduce fly-tipping throughout the county. They are urging anyone with any information about fly-tipping in Wiltshire to report it to them with as much information as possible, and any successful prosecution will earn a voucher of up to **£200** for the person who reported it.

IMPORTANT: Do not try to rummage through or disturb the waste, as this could affect the scene and put people in danger. It is also essential that people do not attempt to confront anyone who is fly-tipping or put themselves in danger in any way.

To report fly-tipping in Wiltshire, or to find out more about the campaign, including terms and conditions, go to:

www.wiltshire.gov.uk/community-environment-wtf

Wash your hands of coronavirus scams!

Friends Against Scams aims to protect and prevent people from becoming victims of scams.

Be aware of people offering or selling:

- Virus testing kits - these are only offered by NHS.
- Vaccines or miracle cures - there is currently no vaccine or cure.
- Overpriced or fake goods to protect yourself from coronavirus such as anti-bacterial products.
- Shopping or medication collection services.
- Home cleaning services.

Protect yourself and others:

- Don't be rushed into making a decision. If it sounds too good to be true it probably is.
- Only purchase goods from legitimate retailers and take a moment to think before parting with money or personal information.
- Don't assume everyone is genuine. It's okay to reject, refuse or ignore any requests. Only criminals will try to rush or panic you.
- If someone claims to represent a charity, ask them for ID. Be suspicious of requests for money up front. If someone attempts to pressurise you into accepting a service they are unlikely to be genuine. Check with family and friends before accepting offers of help if you are unsure.

Be a good friend,
help to protect
your family, friends
and neighbours
from scams.

**Read it.
Share it.
Prevent it.**

#Coronavirus
#ScamAware



Contact

For advice on scams call the
Citizens Advice Consumer Helpline on **0808 223 11 33**
To report a scam call Action Fraud on **0300 123 2040**
Contact your bank if you think you have been scammed.

**NATIONAL
TRADING
STANDARDS**

Scams Team

To learn more about the different types of scams visit www.FriendsAgainstScams.org.uk



Have your donation doubled for Prospect Hospice this Christmas

Prospect Hospice is excited to announce that it has been selected to take part in **The Big Give's Christmas Challenge 2020**, the UK's largest match funding campaign. This campaign gives you the chance to have your donation to your local hospice doubled this Christmas.

The hospice launched an appeal earlier this year to bridge the £2million gap in income that the charity expects as a result of Covid-19. While Prospect Hospice has had a brilliant response to this appeal, raising over £1million already, the local charity still has nearly half of the money to raise. The Big Give's Christmas Challenge is an excellent and easy way to help toward this.

For more information visit www.prospect-hospice.net/thebiggive or call 01793 813355 and to donate.

Prospect Hospice is working hard to bring some cheer both at Christmas and in the New Year. Read on....!

On Sunday 6 December, Prospect Hospice will be holding their first ever virtual Light up a Life service, so everyone in our community can watch through smart TVs, tablets, PCs or smart phones. The event is open to everyone as we share a ceremony of favourite readings and Christmas carols at this special time of year. The highlight of the event, as always, will be the switching on of the tree lights – each light shining brightly in memory of someone special.

To find out more about the service this year, sign up and see how your support at this time of year helps Prospect Hospice care for those in our community, visit www.prospect-hospice.net/lightupalife.



Calling all Santas!



Feeling **Claustrophobic** during lockdown? Then put on your hand **Santa**-tiser and get yourselves signed up for Prospect Hospice's fantastically festive, and not to mention socially distanced, fundraiser this December!

This campaign will see local people coming together (apart) as sprinting, snapping, supermarket or soaking Santas, as well as the option to choose your own Santa challenge. There's a Santa suit ready and waiting for all those taking part.

Intrigued? For more information on the hospice's #SociallyDistancedSantas challenges visit www.prospect-hospice.net/SociallyDistancedSantas

Join Together January

Joining you together, apart, this January

Want to spend some quality time with family and friends during January and raise money for Prospect Hospice at the same time, then why not take part in one or all of the hospice's Join Together activities.

Keeping in touch with friends and family is essential at these times so Prospect Hospice has been working hard on this campaign with the hope that local people will feel inspired to join together (virtually) in January. You can get creative and host your own virtual pub quiz, work out whodunit at a virtual murder mystery party, get a full house at home with virtual Bingo or if you want to take the foodie way to fundraise why not host a virtual cooking party.

To find out more and to register please email:

fundraising&events@prospect-hospice.net



Never has so far been so near.



Christmas Gift Wrapping



Prospect Hospice is once again planning its annual Christmas gift wrapping service for December 2020. The gift wrapping, which has been kindly sponsored for a second year by Marlborough based business, Soft Options, is entirely manned by volunteers and will take place at the Brunel Shopping Centre in Swindon.

For dates, times and more information, visit Prospect Hospice's website and search for 'Christmas gift wrapping'. Alternatively, email fundraisingandevents@prospect-hospice.net

CrimeStoppers.

Speak up. Stay safe.

**WILTSHIRE
CRIMESTOPPERS**

0800 555 111

100% anonymous. Always.

We work with County Police Forces to help reduce crime in our communities and to protect vulnerable individuals. Crimestoppers nationally runs a large number of campaigns each year educating the public about different crime types and appealing for information. The national website is www.crimestoppers-uk.org. should you want to find out more.

In Wiltshire, we are trying to increase our reach to the public with a number of initiatives to make our communities more aware of our service and encourage its use. We are also looking for volunteer 'Ambassadors' within individual parishes to help us stay aware of local issues and promote the use of the service.

Public reporting of crime and anti-social behaviour using 999 or 101 is sometimes inhibited through fear of identification, and thus also of recrimination or reprisal. In providing a 100%-guaranteed anonymous reporting system through Crimestoppers using the number 0800 555 111, we hope to overcome those fears and thus make our communities safer for all. In the last year alone, anonymous reports of crime to Crimestoppers in our county have led to a number of convictions.

One of our objectives this year is to make more people in Wiltshire, especially the more vulnerable members of our communities, aware of the Crimestoppers reporting service through the parish magazines of the County. We hope, for example, to keep the Crimestoppers logo and contact details constantly in the public eye through regular placements in publications such as these.

Finally, as a volunteer Committee we are always looking for people to help our cause and kindly give us their time to make our communities safer; if you know of anyone who may be interested please do let me know.

Matt McGinn

Chairman Wiltshire Crimestoppers.

Email: matthew.mcgin227@mod.gov.uk



Local resident, Victoria Walsh, has kindly done an interview with Pete from The Swan on how 2020 has been from his perspective. Huge thanks to both Victoria and Pete. (This is not Victoria's first contribution and we're very grateful to her.)

Q: How did you become a chef and pub owner?

A: I became a chef straight from school. I studied at Harrogate Catering College for three years and worked for an Italian restaurant through my training. I spent a very happy 14 years at the very same restaurant. I worked in other kitchens too but it was never the same as that job. I loved it. As for becoming a pub owner, when we first moved to Enford I always had a feeling that one day we would be the custodians of The Swan.

Q: What made you move to Enford?

A: Moving to Enford was quite by mistake. We had to move South as Emma's first teaching post was at Larkhill Primary School. It would have been one hell of a trek, Ripon to Larkhill every day. We had been looking at a property in Netheravon, we put an offer in for the house but ended up being gazumped on the property. The estate agent called us as we were travelling back up North and told us of a property in Enford that needed a little work. We turned round, looked at the property and bought it. A very good move.

Q: How would you describe The Swan to someone who's new to the area?

A: Welcoming, friendly, fun, a great place to meet and get to know other people in the area. It stocks practically a drink that everyone will like, from cider, lager, ale, Guinness, selected red and white wines, spirits. The menu is great homemade comfort food, done at Yorkshire-size portions. There's lots to do, from supper club, Swan Fest, Race Days and many more things. The most important thing for us, and that has always been our motto here is: Whether you have a million pounds in your pocket or just a pound, everybody is welcome. We are a village pub that's here for the community of the village and beyond.

Q: What's the best thing about the job?

A: The best thing about the job is making other people happy and entertaining everyone in different ways. If you leave The Swan happy, then we are happy.

Q: Dare I ask, how has your year been...?

A: The year so far has been tough and challenging. Who could have foreseen what we all have gone through and still are? It's sometimes frustrating that as a pub we can only do a little of what we are best at!

Q: Have there been any silver linings?

A: Yes. We managed to do a lot of jobs that had been waiting to be done. I got to know our customers a little more through the shop we ran and the take-away service. And we also got to spend time together, albeit Emma still had to run her school full time.

Q: Christmas and New Year are going to be a bit different this year - what are your plans for The Swan?

A: We had some plans put together, but unfortunately the second lockdown has put paid to that. I think at present until we know what we can do within the guidelines after lockdown 2 we can't really say. It will certainly be a quiet Christmas compared to what we are used to.

Q: What are your hopes for 2021?

A: Our hopes are for the restrictions to end and that the pub can function the way it is capable of. We then don't need to worry about staffing. We have an amazing team at The Swan and so want to be able to keep that. And to have Swan Fest again. It's a long hard week but so worth it to watch the whole village just come along and enjoy themselves and dance and be merry.

Q: And finally, what's your best Christmas joke?

A: I got a Christmas card full of rice through the post today...I think it was from my Uncle Ben.



GARDENING TIPS FOR DECEMBER



- ⇒ December is the month for picking **foliage for Christmas** - holly, berries, etc. Don't forget the **dogwood** stems (*Cornus*) and **willow** (*Salix*) which will provide such lovely colours inside and will leaf up in a few weeks if you put them into water.
- ⇒ Now's the time to plant **bare-root fruit trees and bushes** (not pot-grown - they'll go in in March) if the soil is workable. Continue taking **hardwood cuttings**.
- ⇒ **Dahlias** - I've spent years digging up the dahlia tubers, storing them in the shed and planning to replant them in the spring, only to find they've rotted. All that work for nothing so I now leave them in the ground and cover them with a really thick layer of compost/mulch to protect them through the winter. For the past 3 years, that's worked perfectly.
- ⇒ **Roses** - pull away any diseased leaves and pick them up from around the base (usually this will be black spot) and put into the green bin. Do NOT put into your compost or you'll re-infect them next year when you use the compost. Usually best to wait till Jan/Feb/March to prune but I tend to tie back any climbers which might be damaged in the wind and I've actually half-pruned some of the shrub roses
- ⇒ **Frost Protection** for outside taps - wrap insulation around them. Turn off the water supply and then drain the pipes to avoid any burst pipes. Cover any vulnerable plants in straw, sacking, piles of compost.
- ⇒ Plant up **decorative outdoor containers** - you'll be seeing a lot of them over the next few months! You can use evergreen shrubs (holly, box, ivies, skimmia etc.) as well as heathers and even dogwood stems plus a few pansies or violas. Try and mix foliage and heights for a varied look. If you can pop in a few spring flowering bulbs, such as tulips (bit late for narcissi/daffodil bulbs), you'll have a lovely display in the spring. Check them once a week to make sure they haven't dried out - don't feed them as you'll encourage new soft growth which will be clobbered by the frosts!
- ⇒ Other jobs include a **general garden clear up** - rake up the rest of the leaves, clear away general debris which, otherwise, will harbour slugs and snails. Pull out any ivy from under hedges, another place for the slugs and snails to hide.
- ⇒ Tidy up the **greenhouse**, wash pots and seed trays, clean the garden tools and put the hoses away for the winter.

GARDENING TIPS FOR JANUARY

- ⇒ Time to prune the **Wisteria**, cut back out-of-control climbers (ivies, Boston ivy and climbing hydrangea and Virginia creeper), the tops of **Mahonia** once they've flowered, overcrowded **Forsythia** (by 1/3rd), Climbing **Roses** (see the RHS website for pruning instructions); Autumn **Raspberries** and Viticella **Clematis** to the ground.
- ⇒ **Hellebores** will now be showing their new flower stems so cut off the old leaves at ground level.
- ⇒ **Protect tender plants from frost** - cover them with fleece or move into the greenhouse.
- ⇒ Chit **first early seed potatoes**. Start to **sow extra-early crops** under glass if you've got a frost-free or heated greenhouse.
- ⇒ **Garden furniture** - see if it needs re-painting or treating with preservative - check out the legs as they rot first. Clean, lubricate and sharpen **garden tools**. Check your manual for the **mower, strimmer, hedge cutter** etc. to see what maintenance is needed - this is a good time to get the equipment repaired and serviced for next year.



HAPPY CHRISTMAS AND LET'S HOPE FOR A BETTER 2021!

A Taste of South America Episode 8 - Final Final S America

Our salt flat journey continued to amaze with visits to Inca Wasi, Laguna Colorado and Laguna Verde in Bolivia.

Inca Wasi is an island of cacti and rocky fossils which randomly protrudes from the salt flat floor. It covers an area of 61 acres and is the remains of an ancient volcano submerged when the area was part of a giant prehistoric lake, roughly 40,000 years before.



Laguna Colorado or 'Red Lagoon' is a shallow Salt Lake located in the Siloli Desert and the Eduardo Avaroa Andean Fauna National Reserve. It covers 6000 hectares and is thought to be red in colour due to its abundant supply of rich algae and minerals. It's home to three of the world's six species of flamingo, all of which we saw including the rare James' flamingo thought to be extinct until a small population was rediscovered in 1956.



Laguna Verde or 'Green Lagoon' sits against the backdrop of the inactive volcano Licancabur. Its colour is again the result of the lake containing minerals which this time include arsenic, hence no flamingos live here! The colour, which ranges from turquoise to emerald green, is affected by the

disturbance of the sediment on the bottom. The windier the weather, the more vibrant the colour. Our journey also treated us to some new wildlife. We saw vicuna, the smallest relative of the llama, a protected species, once close to extinction, known for its extremely fine wool; Viscacha, a rodent which looks similar



to a rabbit and some very tame Andean foxes! The foxes, which look similar but healthier than those in the UK, came running up to and alongside our vehicle. Having been fed by tourists the foxes have started associating cars and people with food. Great for the photographers they sit patiently, awaiting their reward, which isn't encouraged.



Our second night in the salt flats saw us split into two dorms, girl's vs boys. The -12 degrees, no heating and only power from 1900-2100 saw us all well behaved and tucked up in our sleeping bags early!

Our last day in the salt flats was a long travel day, it was 12 hours before we finally arrived back at our hotel in Uyuni. We were up at 6am and headed straight to Sol de Manana for sunrise. At an altitude of 4850m and extending 10km², it's a geothermal area of boiling mud pools and steaming hot geysers. Because of the sulphur it also has that distinct rotten egg smell of Rotorua (New Zealand)! The temperature here was absolutely freezing, I think it took half a day for my feet and fingers to finally regain some sense of feeling! It was also on our last day in the salt flats that our friend Adrienne got ill with altitude sickness. Thankfully we were able to get a room for her where I could stay and look after her for a couple of hours before continuing with the journey back. It's amazing what a bit of oxygen can do!

I think the salt flats was probably another one of our high lights from the trip. A great bunch of guys to travel with. We had so many laughs making our Pringles video, taking perspective photos and the scenery just absolutely breath-taking.

Our next port of call was Potosi and when our transport woes would yet again join us! The journey, which was supposed to take 4 hours was extended to 7 due to a road closure by protesting locals. Seeing more scenery was not a problem but we were on a public bus with no toilet stops, except when you jump off at the petrol station whilst the driver refuels (he didn't seem too happy about this). Didn't do much drinking that day and thankfully for once the

bladder was kind to me!

Potosi is a UNESCO world heritage centre in the southern highlands of Bolivia. In the 16th century Potosi fell under Spanish rule and its silver mines exploited, making it once one of the richest cities of the world. During this time thousands of indigenous people and African slaves lost their lives working in the mines appalling conditions. As silver supplies exhausted, Potosi became stricken with poverty and today still struggles with many still mining for minerals including tin, zinc and lead. Dallas took a trip inside Cerro Rico 'Rich Hill' mine. Learning more about its history he also got to see and experience first-hand the conditions under which the miners still work, so, this bit he wrote!

"A mine tour is a key attraction and it was great – we started out early in the morning by getting kitted up in overalls, helmets, boots, lights and masks. We then headed to the miners' market where they all stock up with supplies; coca leaves (they spend on average 13% of their salary on coca – chewed to dull the appetite and get a natural high (strength and energy)); dynamite is about \$5NZ for enough to blow 2 or 3 tons of solid rock - a stick, a fuse and accelerant (thought it might be difficult to bring back in as a gift); lastly, we tasted the alcohol the miners drink (hopefully at the end of the day - 6% proof – warms the cockles...). From the mine we went to the refinery to see how the ore containing zinc and silver is crushed and put through a series of washers using gravity to extract the zinc and then the heavier silver. Dark muddy sludge is collected and dried and exported to places like china (the sludge is about 30% silver) We then went up to the mines. Our guide was an ex-miner so had stories to tell. Like gamblers, very few get rich, but hope keeps them going and most spend their lives never achieving the big find, especially now because the silver is substantially depleted. For obvious reasons we only went about 200meters into the mine, horizontally and not down any of the shafts (deep enough!). It was completely dark, warm (gets over 40deg. deeper in), and with a very fine stifling dust. We took small bags of coca leaves and soft-drinks in as tips for the miners – to apologise for getting in their way pushing barrow by barrow of rock deep into the mine. Seeing daylight again was welcome and though it was a great experience we were all pleased to be out!

We also visited Casa Nacional de Moneda which is a museum and former site of the mint where the silver mined from Cerro Rico was turned into coins before being shipped to Spain. The last coins were minted here in 1953. The museum contains machines used to make, imprint and flatten the coins. The most impressive was the machine which flattened the silver to its required width; a series of large wooden cogs turned by donkeys from the floor below. The donkeys would spend up to 8 hours a day working and you can still see the imprint in the concrete floor from where they used to walk round in a circle to turn the cogs. It's not surprising their life expectancy was only about 6 months. Working conditions were also fairly horrendous for the workers there, again many having their life expectancy cut short due to accidents, mercury poisoning used in the refining process and harsh working environments."

We then travelled 4hours by local bus from Potosi to Sucre, Bolivia's official capital. Sucre is a world heritage site and it's clear to see from the onset it's a much wealthier city. Very clean, tidy, dedicated grass and parkland areas and very grand buildings, many whitewashed with indoor patio areas. After a quick orientation tour of the city it was off for a visit to Cal Orco, home to over 5000 dinosaur footprints, the largest in the world. The footprints, covering an area of 1,500 meters long by 110 meters high, were uncovered on a



limestone cliff inside a cement factory in 1998. The prints are believed to have been made some 68 million years ago. They were preserved by sediment having been made in muddy clay prior to the land drying. Fast forward a few years and after some tectonic movement, earthquakes, ground becoming cliff and the sediment slowly eroded away by rain, the prints appeared or so Dallas was told. I stayed at the hotel for a bit of R+R - wasn't my thing!



Having not done anything fairly strenuous for a few days we decided it was a high time we did a hike! So, the next day we headed off to walk the Chataquila trek. It's a pre-Inca path winding down for about 1.5 hours from Chataquila (3647m) to Chaunaca (2878m), taking in stunning views of the Andes, surrounding valleys and Maragua Crater. On our way down we passed a couple walking their cows up the trek, definitely the harder option.

It appears the best way to keep stock moving up a mountain is to lob a stone from behind at the one in front!



Later in the afternoon we took a wander around the city, visiting one of the local markets with its interesting array of colours, smells and sights. There were fruit and vegetables stacked high, flowers, meat hanging from hooks, bags of spices and herbs tailored to help with all kinds of ailments.

The highlight of Sucre had to be our last night. Having seen sandbag walls being constructed earlier in the day we wondered whether there had been a severe weather warning for flooding we were unaware of. But fear not it was just for safety barriers for the street racing qualifying. I kid you not, right outside our hotel, on the main street, came cars hurtling past on time qualifying laps. Picture Salisbury high street on a Saturday night, people walking down the pavements as cars whiz pass. The only safety measure, apart from the sandbags, was police positioned at intersections to allow people to cross, a whistle their only way of warning for an approaching car! It really was an amazing, scary, bizarre sight. We had to do a death run after tea, back to our hotel, judging when there were no cars coming (from the lack of whistle blowing) we sprinted the 50 metres down the pavement back to the hotel. Felt like we were doing a pitch invasion minus the nuddy run!

Our journey from Sucre took us back to La Paz for what would be the last night of our trip. Of course, it had to end in true fashion, with our flight to La Paz being cancelled! Thankfully we knew a day early and so got an earlier flight that meant we had a whole day in La Paz for any last-minute purchases. We spent our last night enjoying a farewell meal with our new-found friends, most of whom were also at the end of their travels with a few continuing on to destinations we had recently travelled. A sad goodbye and toast of pisco sours saw us all returning to the hotel early as most of us flew out at 5am.

Our flight to Santiago went smoothly after an initial problem checking in, something to do with my immigration status in New Zealand - I have no idea! I got on the plane so that was all that mattered. I figured the worse they could do would be to send me to home to England - fingers crossed! In Santiago we had a 12-hour stop over which nearly killed us but after some careful maths we deduced that the amount we would spend on food and drink over that time, it would be more cost effective to pay to access one of the airport lounges. Unlimited WIFI, free food and drink and a comfy seat to watch the hours pass. Dallas did also work out how many beers he would have to drink to break even - he did pretty well!

So here we are back in NZ and definitely back into the swing of things. Both back at work and thinking of where our next travel will take us.

Hope you have enjoyed reading about our trip as much as we've enjoyed living and experiencing it. An amazing trip which exceeded our expectations. Galapagos, I'm still revelling in the placid and sometimes cheeky nature of the animals. A unique environment I hope is continued to be maintained and preserved. Peru, a country of colour and beauty. The Inca trail is a journey that shouldn't be taken lightly. An unforgettable experience made possible by the amazing porters. Truly unexpected and finally, Bolivia, a country of extremes. The vast landscapes of mountains, volcanoes, salt flats, deserts and geothermal wonders. All have been captured and will stay with us forever in what was our holiday/honeymoon!



ENFORD VILLAGE HALL

Update 20 November 2020



Following the first Lockdown from mid March, the Village Hall re-opened at the beginning of July. Numerous small events and meetings were able to take place and some classes and clubs re-started. A few private bookings were also able to take place as originally planned. Unfortunately the Hall had to close again from 5th November. It is not yet known when the Government will allow venues to re-open - perhaps in early December or perhaps not! Please check with the relevant organisers and teachers in case they are organising alternative arrangements.

As we all know, guidance can change at any time and at very short notice but, if you have any queries or concerns, please contact 01980 670501 or email enfordvillagehall@btinternet.com

**Love Reading,
Love Libraries**

The Mobile and Other Library Services

Wiltshire Council
Where everybody matters

For the latest situation regarding Wiltshire Libraries (including the mobile library) please go to www.wiltshire.gov.uk/libraries-news

Do you have some time to spare to support local older people?

Information about all our roles can be found:

- ⇒ on our website www.ageukwiltshire.org.uk or
- ⇒ by calling our office on 01380 727767
- ⇒ or emailing us at volunteering@ageukwiltshire.org.uk



The Enford Community Fund

Funding is available to help projects/events in the Parish of Enford (which includes East and West Chisenbury, Coombe, Fiffeld and Littlecott).

Applications for awards must be made to the treasurer, Amanda Farrow, by email or letter, no later than the first day of the award month (March and September). amanda.farrow@chisenbury.co.uk or 537 East Chisenbury.

The following guidelines will be followed in allocating funds:

1. Awards will be considered every 6 months in March and September.
2. Awards will be made for individual projects and are not designed to allow awardees to become reliant on the award on an annual/regular basis.
3. Awards will be made to causes that benefit the community and not specific individuals.
4. No awards will exceed £1,000.
5. For any award to be made, there must be agreement by at least 75% of the Committee.

ENFORD PARISH COUNCIL Meeting Dates 2021

Day	Date	Time	Meeting type
Tuesday	12th January	7:30PM	Parish Council Meeting
Tuesday	9th March	7:30PM	Parish Council Meeting
Tuesday	13th April	7:30PM	Parish Council Meeting
Tuesday	11th May	6:30PM 7:30PM	Parish Council AGM Annual Parish Meeting
Tuesday	15th June	7:30PM	Parish Council Meeting
Tuesday	13th July	7:30PM	Parish Council Meeting
Tuesday	7th September	7:30PM	Parish Council Meeting
Tuesday	12th October	7:30PM	Parish Council Meeting
Tuesday	9th November	7:30PM	Parish Council Meeting
Tuesday	30th November	7:30PM	Precept Meeting 2021/2022
Tuesday	7th December	7:30PM	Parish Council Meeting

Due to changing Covid restrictions, location of meetings will be confirmed nearer each date.

COVID19 (Coronavirus) - Wiltshire Council

For the most up to date information on Council services that may be affected by COVID-19 and health advice and information, please visit <http://www.wiltshire.gov.uk/public-health-coronavirus>. This will be regularly updated for all Council services and will hold all information in a central place. Please feel free to contact your Wiltshire councillor, **Ian Blair-Pilling** if you have concerns or questions which you would like him to pursue.:

Home: 01980670812

Mobile: 07518942216

ian.blair-pilling@wiltshire.gov.uk

ENFORD VILLAGE – DOG MESS BINS

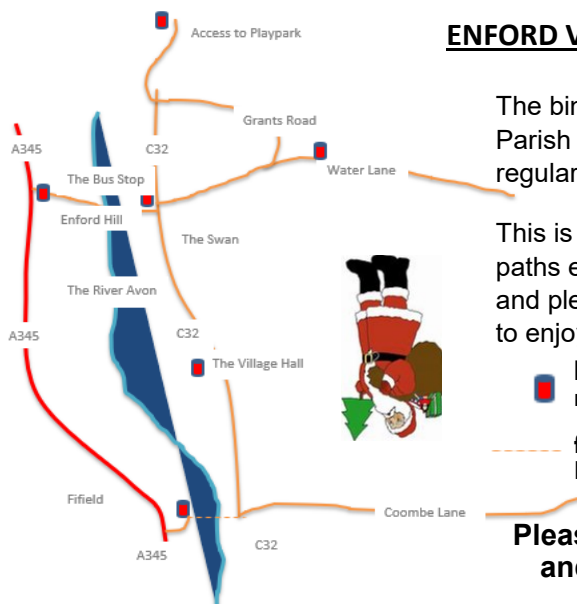
The bins have been paid for by the Parish Council who also pay for their regular emptying.

This is to try keep the kerbs, walks and paths etc. around the village as clean and pleasant as possible for everyone to enjoy.

bins available for bagged dog mess in the village.

footpath from Coombe Lane to Fifield.

**Please clean up after your dog and use the bins provided.
Thank you.**



Advertising

You too can advertise in this magazine.

Just call Jeni Scott-Dalglish on

01980-670210 or 07779 986920

†£22 per 1/8 page †£48 per 1/3 page
†£60 per 1/2 page and †£100 per full page
for 10 issues.

Prices can be negotiated for other sizes/periods.



Nectar of the Dodds

HONEY ● BEES ● BALMS

PRICES FOR MY LOCAL HONEY

8 OZ JAR £4 ● 12OZ JAR £5 ● 1LB JAR £6

Contact Janet on 07768140027

Feel free to pop over: 77 Fifield, Enford, SN9 6DQ



NectaroftheDodds

TIM BUCKLAND BOILER MAINTENANCE

FOR SERVICE AND BREAKDOWNS

*Friendly and efficient service
Wide stock of boiler spares in stock*

VERY COMPETITIVE PRICES

Also AGAs and RAYBURNS serviced

Tel: 01980 551386

S.O. CHIMNEY SWEEPING



- ♦ Camera Surveys
- ♦ Birds Nests Removed
- ♦ Fully Insured
- ♦ NCSSA Registered
- ♦ Friendly Local Service
- ♦ Cows Fitted

Call Sean on 07881 206536

seanoades@hotmail.com



PROFESSIONAL CARPET AND UPHOLSTERY CLEANING

Established 1999, operated by retired Army SNCO to military precision

Fantastic reputation

Used by several local estate/lettings agents

Luxury quality

Fully insured

www.cleanlivingmcc.com

enquiries@cleanlivingmcc.com

01980 621621



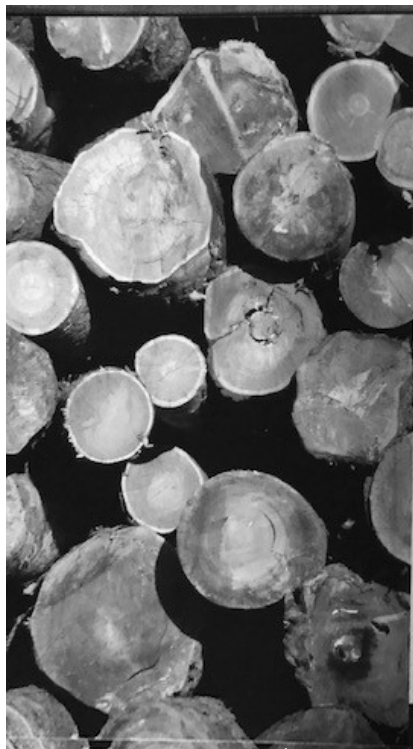
**Charlotte's
Handy Services**
07483 102765



Working in Wiltshire

www.charlottes-handy-services.co.uk

Need a little help with those DIY jobs, or have a bigger job that needs doing, then I am here to help! I offer painting and decorating, general DIY, plumbing, gardening, moving furniture, building flat packs, putting up shelves and much much more. Call Charlotte on 07483102765 or email charlotteshandyservices@hotmail.com.



OAKLAND TIMBER

Quality Seasoned Firewood

07584 091446

**Seasoned Firewood & Kiln-dried
Firewood available. Delivered in Bulk
Bags.**

Kindling also available



Firewood Supplier

www.oaklandtimber.co.uk



Spurious Santa Locations!
Pages 2, 8, 10, 15, 19, 25,
26, 29, 36 and 38.

**Stay healthy this winter and learn how to support
your
immune system**

Find out more from

SARAH WILLIAMS MNIMH MAPA

Medical herbalist

Ayurvedic practitioner

Nutrition and Functional Medicine

Telephone 01980 652563

Email: sarah@sarahwilliamsayurveda.com

www.sarahwilliamsayurveda.com



WILTSHIRE WILLOW: LOGS AND FIREWOOD FOR SALE

Seasoned and split logs, kindling and firewood
Ideal for wood-burning stoves and open fires

***Trailer loads for £90.00**

***Weekend bags for £30.00**

Kindling and stacking on request.

To order your free delivery, please call Martin on 07788 429772

DELIVER FREE WITHIN 5 MILE RADIUS OF ENFORD

M NASH & P WILKINS

***ALL LANDSCAPING WORK
UNDERTAKEN***

****FENCING****

****PATIOS*PATHS*PONDS****

****BRICKWORK****

****HEDGE CUTTING****

****GARDEN CLEARANCE****

****GRASS CUTTING****

Tel: MIKE 01980 635324

AKER

FIRE & SECURITY

INTRUDER, FIRE, CCTV, CARBON MONOXIDE &
SMOKE ALARMS, GATE AUTOMATION

We can offer a one off service or fault finding visit without
the need for a long term contract call 07515358875 or email

info@akerfireandsecurity.co.uk



MOBILE HAIRDRESSER

Ring Donna

on

07711 579403

Bits & Pieces (Durrington Ltd)

BUILDING, GARDENING & DIY

PETS, PANELS, AGGREGATE

37 - 39 Bulford
Road, Durrington
Wiltshire SP4 8DL

Tel: 01980
655552

Proprietors: P & M Conn

LB FOOT HEALTH

Offering home treatments for
a variety of conditions
including:

- ♦ Corns ♦ Hard Skin
- ♦ Nail Cutting ♦ Diabetic Foot Management



Leanne Burden Dip FH MCFHP MAFHP

T: 07824 797578

THE MOTOR GARAGE LTD

Servicing, MoT tests and Repairs for
Classic Cars as well as Modern

Telephone: 01980 670348

www.themotorgarage.co.uk
enquiries@themotorgarage.co.uk

Netheravon, Salisbury, Wiltshire, SP4 9RH



18 The Bluestone Centre, Sunrise Way, Solstice Park, Amesbury, Wiltshire,
SP4 7YR

T: 01980 258472 E: equidae-equineservices@outlook.com

We sell a variety of

Equine Feed, Supplements and Health Care Products

Field and Stable Accessories

High Viz items

Clothing

Equine and Small Animal Bedding

Poultry Feed, Oyster Shell and Grit

Dog Feed

Small Animal Feed

If you require something not in stock, let us know and
we will try to get it for you.

Also Available

Rug Wash and Reproofing Service

Horse Rug Repair Service

Horse Trailer Hire

Paddock Cleaner Hire



Digger & Mojo

WOODBOROUGH

DECORATIVE ANTIQUES &
VINTAGE EMPORIUM
WORKSHOPS & CHRISTMAS GIFTS



*We restore Antiques + revamp your Furniture
Mending • Painting • Reupholstery*



Shop/Office: 01672 851 510
Email: ask@diggerandmojo.com
www.diggerandmojo.com

*"IT'S A KIND OF
MAGIC"
Salisbury Life Magazine*

WOODBOROUGH GARDEN CENTRE
WOODBOROUGH, PEWSEY, WILTSHIRE, SN9 5PF

OPEN 7 DAYS 11am - 5pm



Red Lion Freehouse
& TROUTBECK GUEST HOUSE

01980 671124



Bakery on a Bar **Every Sunday 9am till 1pm**

Join us every Sunday morning for coffee and a breakfast treat to scoff here or take away. Team Pastry is lovingly producing hand-made pastries, fresh doughnuts, cinnamon buns and so much more...

Also available our collection of wacky ice creams and other bakery bits.

www.redlionfreehouse.com

ENGLISH COUNTRY GARDENS

Garden & lawn maintenance, hedge and tree work, fences, driveways & weed control
Garden waste removed.

Qualified, fully insured and licensed, 23 years experience

WE SUPPLY

Mushroom compost, manure, Pro Grow, woodchips, gravel, stone & scalplings

Loads of logs by size: £85, £160, £190

All seasoned & dry native species.

Can stack (extra charge)

Bags of kindling: £5 or 5 bags for £20

LOGS NOW
AVAILABLE IN
1& 2-TON BAGS
For convenient
outside storage

Call or text Nick on 07835299247

Free Delivery

Avon Security

MASTER LOCKSMITHS

Engraving Service Now Available

- > Brass
- > Plastics
- > Aluminium
- > Glass
- > Trophies
- > Gifts

Free Advice & Quotations On Securing Your Property & Belongings

Key Cutting
Locks Supplied & Fitted
Access Control
Safes
PVCu Locks
Master Key Systems
Lock Repairs
Door Furniture & Ironmongery
Transponder Car Keys
Keys To Code
Watch Batteries & Straps
Emergency Call Out Service



01980 626000

21, Salisbury Street, Amesbury, Wiltshire, SP4 7AW
www.avonsecurity.net



body fitness studio **works**

Abbey Square Amesbury Tel:- 01980 625050

Affordable Personal Training !!

Are you bored at the gym?

Are you tired of being left on your own?

Do you want better results?

You're not on your own at our club!

***We teach, motivate and help you achieve
your desired results***

CALL US NOW ON: 01980 525050



Plumbing, Heating, Electrical & Renewable Energy

Solar Thermal & PV, Air & Ground Source Heat Pumps, Ventilation, Boiler Replacements. Domestic, Commercial & Industrial Contractors. Family Business Established 1970.

Free Estimates and Advice:
Tel: 01980 670667 Fax: 01980 670811
www.rgvengineering.co.uk info@rgvengineering.co.uk







**MODERN & TRADITIONALLY
DESIGNED MEMORIALS**

M J SLY

*Monumental Stonemason
New Memorials, Additional Inscriptions
Restorations, Free Home Visits
Free Brochure*

Marlborough (01672) 516797
Email: martin@mjsly.co.uk
Website: www.mjsly.co.uk
Workshop & Showroom at Pelham Court,
London Road,
Marlborough, Wiltshire
Open by appointment only

Oil Boiler Servicing
Commissioning & Repairs

Call Graham C Brown & Son
01980 622737

Fully Qualified  Fully Insured

Experienced Technician

Advertise in the Newsletter

✦ £22 per 1/8 page ✦ £48 per 1/3 page
✦ £60 per 1/2 page and ✦ £100 per full page
for 10 issues

“PAMCAKES”

*Bespoke Cakes for your special occasions (any age group).
Traditional and 3D, cupcakes and some Wedding Cakes. See my FB page “pamcakes of netheravon” for more details & website
pamcakesofnetheravon.co.uk
pamcakes@write.me or call
07919656141*

Art Classes

Collingbourne Kingston
Thursdays 13:30 – 16:00

**Water Colour - Acrylics
Drawing**

Learn about colour, composition, values
Want more information?
Alta Edwards 07709718280
altaedwards22@gmail.com



Bespoke Fashion Design and Dressmaking for any occasion.
For more details contact
Ramona Edwards
rhensel85@gmx.de // 07827597084

KD WORSDELL

**Carpentry & Joinery
Building Works & Maintenance
Bathrooms and Kitchens**

Please Call
01980 630545
Or
07759 586162

Jonathan Green Antiques

We Buy & Sell

Silver
Jewellery
Gold Coins
Anything interesting
Home Visits no obligation

Repair & Restoration

Silver
Jewellery
Hand Engraving
Machine Engraving
Remodelling of Jewellery

You can find us at the rear of the ground floor.

The Antiques Market
37 Catherine Street
Salisbury
SP1 2DH
01722 332635

Email: jg@jonathangreenantiques.co.uk



Coombe based wood turner offering unique, elegant designs in a variety of domestic and exotic hardwoods.

Commissions taken for special gifts that can be personalised with brass or hallmarked silver discs set into the underside of the piece.

Many items in stock, including a variety of bowls, platters, vases, boxes and decorative trees.



Contact: George Shapland

01980 671321

george@butterwood.co.uk

www.butterwood.co.uk



ENFORD VILLAGE HALL & RECREATION GROUND

Contact Details:

Booking Officer 01980 670501
enfordvillagehall@btinternet.com
www.enfordnewsletter.org

Chairman 01980 670501
 Grounds Officer 01980 670210
 Maintenance Officer 01980 670526
 Treasurer 07788 426473

Clubs and Classes are hoping to start again from September following the latest Government advice on social distancing and wearing masks. Contact details for the organisers are included below if you would like further information.

Day	Activity	Time	Contact
Monday	Yoga	6.30pm – 7.45pm	Emma Petitt 01980 670510 emma@petittbros.co.uk
Tuesday	Enford Film Club	4th Tuesday in the month Doors open 7.00pm	01980 670501 enford-villagehall@btinternet.com
Wednesday	Short Mat Bowls	7.30pm – 10.00pm October - April	David Spencer 01980 670526 spencersqb@yahoo.co.uk
Thursday	Pilates	8.30am – 9.30am	Nicci Caswell 01980 625245 Work nicci@thecaswells.uk
Thursday	Camera Club	8.00pm – 9.00pm 1 st Thursday in the month	enfordcamera-club@gmail.com
Thursday	Gardening Club	7.00pm – 9.00pm 2 nd Thursday in the month	Fanny Middleton 01980 671645 fannysurtees@btinternet.com
Saturday	Enford Junior Football Club	10.00am - 11.00am Recreation Ground	Ollie Stagg 01980 670634 Steve Todd stodd@qinetiq.com
Sunday	Salisbury League Durrington Football Club	11.00am – 1.00pm Check dates with organiser	Scott Jackson Mob 07854 284451 scott3a@hotmail.co.uk

Private Parties

The Village Hall is the perfect venue for Weddings and special Anniversaries or Birthdays. It is also ideal for Children's Parties and Christening Celebrations – or for any other excuse for a celebration!

VILLAGE COMMITTEES

PARISH COUNCIL

Chairman	Richard Roberts	671055
Vice Chairman	Mark Hiskett (PROW)	670955
PCC Representative		
Public Rights of Way		
Planning	Peter Cliffe-Roberts	671676
Parish Clerk	Elizabeth Harrison	670034
Playpark/Village Amenities	Jane Young	670532
and Youth Representative		
Neighbourhood Watch/	Charlotte Clark	670276
Police Liaison		
Tidworth Area Board and	Anthony D'Arcy Irvine	670501
Village Hall Representative		
Flood Warden	Bruce Waight	670113
No specific role	Pat Holdway	671792
No specific role	Vick Exley	07870 189235
Steward contact	Rob Coulthard	



NETHERAVON SCHOOL

Chairman of Governors	Mr Richard March
Head Teacher	Mrs Gillian Durrans

NEWSLETTER

Chair	Vacant
Vice Chair & PC Rep	Jane Young
Secretary & Advertising	Jeni Scott-Dalgleish
	Roz Perry
Treasurer	Jacqui Elkins
Village Hall Rep	Sue Cosgrove
Compiler:	Gay Monk
Committee Member	Ann Houghton
Committee Member	

PAROCHIAL CHURCH COUNCIL

Church Wardens	Tim Edwards
Treasurer	Tom Hunter
Secretary	Tom Hunter
Council Members:	Mary Burdick
	Sue de Candole
	Anastasia Dubovik
	Venetia Field
	Fiona Leakey
	Fanny Middleton

VILLAGE HALL

Chairman and	Judy D'Arcy-Irvine
Booking Officer	(670501)
Vice Chairman	Vacant
PC Rep	A D'Arcy-Irvine
Secretary	Hamish Scott-Dalgleish
Camera Club	Jane Young
Newsletter	Jacqui Elkins
Property Officer	David Spencer
Grounds Officer	Hamish Scott-Dalgleish
Gardening Club	Rosemary Cox
Short Mat Bowls	David Spencer
Junior Football Club	Ollie Stagg

YOUR DIARY December 2020 (For regular Village Hall dates, see page 37)		
1st	Tue	
2nd	Wed	
3rd	Thu	Household Waste/ Enford Church open individual prayer and reflection 9am - 12noon
4th	Fri	
5th	Sat	
6th	Sun	Holy Communion, 9.30am Enford Church/ Enford Church open individual prayer and reflection 1pm - 4pm/ Prospect Virtual Service (p18)
7th	Mon	
8th	Tue	Black box, Blue bin/Parish Council Meeting 7:30pm V Hall
9th	Wed	
10th	Thu	Enford Church open individual prayer and reflection 9am - 12noon
11th	Fri	Enford Christmas Tree Light Switch-on, 6:15pm at Enford Bus Shelter
12th	Sat	
13th	Sun	Evensong, 6pm Enford Church/ Enford Church open individual prayer and reflection 1pm - 4pm
14th	Mon	
15th	Tue	
16th	Wed	
17th	Thu	Household Waste/ Enford Church open individual prayer and reflection 9am - 12noon
18th	Fri	
19th	Sat	
20th	Sun	Informal Christmas Readings and Music, 9:30am Enford Church/ Enford Church open individual prayer and reflection 1pm - 4pm
21st	Mon	
22nd	Tue	Black box, Blue bin/Newsletter Deadline Day
23rd	Wed	
24th	Thu	Enford Church open individual prayer and reflection 9am - 12noon
25th	Fri	Christmas Day Holy Communion, 9:30am Enford Church
26th	Sat	Boxing Day
27th	Sun	Enford Church open individual prayer and reflection 1pm - 4pm
28th	Mon	
29th	Tue	
30th	Wed	
31st	Thu	New Year's Eve

YOUR DIARY January 2021 (For regular Village Hall dates, see page 37)

1st	Fri	
2nd	Sat	Household Waste
3rd	Sun	Enford Church open individual prayer and reflection 1pm - 4pm
4th	Mon	
5th	Tue	
6th	Wed	Black box, Blue bin
7th	Thu	Enford Church open individual prayer and reflection 9am - 12noon
8th	Fri	
9th	Sat	
10th	Sun	Enford Church open individual prayer and reflection 1pm - 4pm
11th	Mon	
12th	Tue	Parish Council Meeting 7:30pm V Hall
13th	Wed	
14th	Thu	Household Waste/ Enford Church open individual prayer and reflection 9am - 12noon Gardening Club AGM & Social V Hall 7pm
15th	Fri	
16th	Sat	
17th	Sun	Enford Church open individual prayer and reflection 1pm - 4pm
18th	Mon	
19th	Tue	Black box, Blue bin
20th	Wed	
21st	Thu	Enford Church open individual prayer and reflection 9am - 12noon
22nd	Fri	
23rd	Sat	
24th	Sun	Enford Church open individual prayer and reflection 1pm - 4pm
25th	Mon	
26th	Tue	
27th	Wed	
28th	Thu	Household Waste/ Enford Church open individual prayer and reflection 9am - 12noon
29th	Fri	
30th	Sat	
31st	Sun	Enford Church open individual prayer and reflection 1pm - 4pm