

Enford Newsletter

*What's Happening In and Around East and West Chisenbury,
Compton, Coombe, Enford, Fifield, New Buildings, Newtown*



April

2021

www.enfordnewsletter.org

Wiltshire Council
Where everybody matters

**April
2021**

Waste collection

Thurs 8th	Household waste
Tues 13th	Mixed dry recycling (blue lidded bin) and glass (black box or basket)
Thurs 22nd	Household waste
Tues 27th	Mixed dry recycling (blue lidded bin) and glass (black box or basket)

Highlights This month

🌀 Bin collections are shown above but Wiltshire Council have not publicised dates for Garden Waste Collections.

🌀 At last some good news! Both our local pubs re-open and can welcome people to their gardens in April - 14th for The Swan and 15th for The Red Lion. See pages 22 & 23.

🌀 What's Your Favourite...? For this month's category have a look on page 6 and you'll find last month's results on p12.

🌀 Pages 12 & 19 might be things to do this summer.

🌀 Temptation lies on p15 with a fabulous chocolatey and ridiculously easy recipe.

🌀 Thanks again to Anne Heath for the cover photos - Tree at the Priory at East Chisenbury and the bridge between Fyfield and Coombe...

🌀 ...and this month she has a new question for you. See page 18.

🌀 Other items of note include:

- ◆ the Village Hall update p7;
- ◆ school appeal and speed awareness stickers p8;
- ◆ condolences p11;
- ◆ small ad p13;
- ◆ PC March Meeting notes pp16&17;
- ◆ gardening tips p21;
- ◆ useful numbers - see the back cover.

🌀 You should continue to contact organisers of events advertised 🌀 within these pages for further advice on whether those events are still going ahead, given the constant changes due to Covid and please **always follow current Government Covid requirements.**

CONTENTS

Refuse Collection Dates/Highlights	2
Content Index/Next Newsletter Deadline	3
Team Curate's Musings/ Online Services	4
Parish News/Victim Support	5
What's your Favourite...?/ Libraries/Enford Community Fund	6
Parish Council Notice and Meeting Dates/Village Hall Update	7
Speed Awareness Stickers/ CrimeStoppers/School Request	8
Domestic Abuse Support Offer/ Defibrillator	9
Gardening Club/Dog Mess Bins	10
Condolences/ Prospect Thanks a Million	11
Walking in Wiltshire/ Lockdown Hobbies	12
Age UK Support/Wiltshire Council Covid Support/For Sale Ad	13
Camera Club/HomeStart Support	14
Wiltshire Council Fund/Recipe	15
PC Meeting Minutes	16-17
Fun Article/Wanted Ad	17
Where is it? Results and New Photo Challenge	18
International Bomber Command Centre Article	19
PC Website/SPTA News	20
Gardening Tips	21
Age UK/Flytipping	22
Advertising	22-33
Village Hall Diary	34
Village Committees	35
Useful Phone Numbers & Websites	36

**The next
Newsletter deadline is
FRIDAY
16th April 2021**

Emails are preferred but all items for inclusion, whether they are handwritten, typed or via e-mail, **MUST be submitted by the deadline date.**

These articles may be handed in to any Newsletter Committee member.

Please send e-mails to enfordnewsletter@gmail.com

Enford Newsletter Committee reserves the right to reject or omit from publication any material that is considered by majority of Committee Members to be detrimental to any person or which is not in the best interest of the community as a whole.

All letters and articles must be signed, but the Committee will withhold the name of the writer if this is requested.

Cycled to the shop to buy a bottle of gin, but then I thought, what if I fall off my bike and the bottle gets broken? So cleverly, I drank it all outside the shop. Good thing I did too, I fell off my bike seven times on my way home



A word from Heather Brearey our Team Curate:



Dear Friends,

It only seems like yesterday that we were celebrating Christmas and the Birth of Jesus and now Easter is almost upon us.

It is a very different Easter this year as it was last year.

Life is still upside down, we are not sure what the future holds for us, we are restricted, we are frightened, we are sad.

This is almost certainly how Jesus' disciples and friends felt on that Easter morning as they were trying to come to terms with what they had witnessed. Three days earlier they had seen the man they loved, the man they followed the man in whom they had placed all their hopes, die a brutal death on a wooden cross.

Then if we read further on in our four Gospels in the Bible we see that that Mary Magdalen, accompanied by others went to the tomb and found that it was deserted, the body of Jesus was not there, the tomb was empty. They were told by a man, an angel that Jesus is Risen. We can only imagine, the confusion, and the joy with which they left that place to rush and tell the others. Jesus Christ is Risen, Alleluia!

Yes 2000 yrs. ago a man died a brutal death on a wooden cross, His death caused a stir in the place where it happened and his Resurrection caused Christianity to be born.

He died so that the sins of all the world would be forgiven.

This year we will be back in our church buildings to celebrate Easter, and we have much to be joyful for, we have a God that loves us, a God that gave His Son so that we might be forgiven and we have vaccines that are fighting this terrible Coronavirus.

I hope and pray that we are able to see family, friends and loved ones as restrictions are eased and that as we are able to hug each other we remember to be thoroughly thankful for all that we have.

I hope that as you enjoy those hollow chocolate Easter eggs on Easter morning that they will remind you that the tomb was empty.

I hope that you will hold on to the promise that God is always with us, that Jesus Christ is Risen Alleluia!

I also hope that you will wander in and join us in one of our churches on Easter morning to give thanks to God for His Son, who died and rose again for us on that first Easter Day.

God Bless you

Take Care, Reverend Heather

	SERVICES AT ALL SAINTS CHURCH, ENFORD	
<p>The Avon River Team will be providing prayer and worship ideas for people to do in their homes. These will be found on our website: www.avonriverteam.org.uk together with Services in the 7 churches in the Avon River Team, and Minutes of PCC meetings.</p>		



PARISH NEWS



We are happy to announce the return of church services, albeit slightly scaled down. Great news in time for Easter!

The service schedule for April is listed below. If you are unable to attend, but would like to join a service from home, a variety of resources, including pre-recorded services, video links and materials for home worship are available on Avon River Team website www.avonriverteam.org.uk.

The church continues to be open twice a week for individual prayer and reflection – Thursdays 9am - 12noon and Sundays 1pm - 4pm. We welcome you to come and visit.

CHURCH SERVICES FOR APRIL

9:30am	Sunday	4 th April	Easter Sunday Holy Communion
9.30pm	Sunday	11 th April	Holy Communion
6.00pm	Wednesday	21 st April	Evening Prayer followed by APCM

Services in the 7 churches in the Avon River Team, and Minutes of PCC meetings, can be found at: www.avonriverteam.org



VICTIM SUPPORT Have you been affected by crime?

Victim Support offers free and confidential help and support to anyone affected by any crime.

The charity is independent of the police and you can access services whether or not the crime has been reported and regardless of when it happened.

For support, contact: Wiltshire Office: **01380 738878**

Freephone: **0808 281 0113** E mail: wiltshire@victimsupport.org.uk

[As an independent charity, we work for a world where people affected](http://www.victimsupport.org.uk) by crime and traumatic incident get the help they need and the respect they deserve. To find out how you can help us help more people visit victimsupport.org.uk/get-involved

What's Your Favourite...?

This month, with a view to us all having more freedom soon, we're asking where you like or would like to go on holiday. Tell us why, too! Foreign climes may not yet be possible, but there'll be next year and the year after and...!

Just send us an email to enfordnewsletter@gmail.com.

No email? Just drop in a note to:

Jane Young, Beckenried, Enford, Gay Monk 15 Coombe Lane or
Jeni Scott-Dagleish, River House in East Chisenbury

Deadline this month Wednesday 14th April



**The Mobile and Other
Library Services**



As we went to print there is no update from Wiltshire Council on the libraries specifically, either by email to the Committee or online.

"A Wiltshire Roadmap" available at Coronavirus (COVID-19) - Wiltshire Council states that libraries will open no earlier than 12th April.

Wiltshire Libraries said in January that they will continue to review this situation and the latest news on libraries, including opening hours and contact telephone numbers can be found at www.wiltshire.gov.uk/libraries.

The Enford Community Fund

Funding is available to help projects/events in the Parish of Enford (which includes East and West Chisenbury, Coombe, Fifield and Littlecott).

Applications for awards must be made to either:

Gareth Holden (07971 864608) garethholden62@gmail.com or

Richard Petitt Richard@petittbros.co.uk

by email or letter, no later than the first day of the award month (March and September).

The following guidelines will be followed in allocating funds:

1. Awards will be considered every 6 months in March and September.
2. Awards will be made for individual projects and are not designed to allow awardees to become reliant on the award on an annual/regular basis.
3. Awards will be made to causes that benefit the community and not specific individuals.
4. No awards will exceed £1,000.
5. For any award to be made, there must be agreement by at least 75% of the Committee.

ENFORD PARISH COUNCIL Meeting Dates 2021

Day	Date	Time	Meeting type
Tuesday	13th April	7:30PM	Parish Council Meeting
Tuesday	11th May	6:30PM 7:30PM	Parish Council AGM Annual Parish Meeting
Tuesday	15th June	7:30PM	Parish Council Meeting
Tuesday	13th July	7:30PM	Parish Council Meeting
Tuesday	7th September	7:30PM	Parish Council Meeting
Tuesday	12th October	7:30PM	Parish Council Meeting
Tuesday	9th November	7:30PM	Parish Council Meeting
Tuesday	30th November	7:30PM	Precept Meeting 2021/2022
Tuesday	7th December	7:30PM	Parish Council Meeting

Due to changing Covid restrictions location of meetings will be confirmed nearer each date.



ENFORD VILLAGE HALL Update 19 March 2021



If all goes well nationwide, the Village Hall will re-open from 17th May for Meetings, Classes and Clubs, both indoors and outside. According to the Government's "Four Step Road Map" parties and private events will be permitted to take place from 21st June.

The Hall is fully Covid compliant and, similar to the last couple of times when the Hall was allowed to open (albeit with some restrictions) users are asked to help by following all the basic guidelines for social distancing and hygiene. Please check with the relevant club organisers and class teachers as to when they are planning to return or if they have set up alternative arrangements online.

Before it re-opens on 17th May for regular bookings and activities, the Village Hall will be the Polling Station for the Local Elections taking place on Thursday 7th May. There is also a cycling event in the area on Easter Sunday when the event organisers will be using the Hall's car park as a staging point for competitors.

Several private events have been booked for the summer months, most of which postponed from last year and children's parties and family celebrations will be permitted from 21st June. If you booked a private event and had to cancel or postpone due to all the restrictions, please contact the Booking Officer and your deposit will either be returned or held pending a new date being arranged.

In the meantime, if you have any queries or concerns please contact 01980 670501 or email enfordvillagehall@btinternet.com



WHEELIE BIN SPEED AWARENESS STICKERS

At the Parish Council meeting of 9th March (Zoom) this matter was raised under 'Residents' Issues'.



After a discussion it was agreed that the Parish Council would purchase wheelie bin speed awareness stickers for those residents who live on through roads in the Parish – namely the A345 (30mph x50) and the C32 (20mph x100). They would be available on a first come, first served basis.

Anyone wishing to display these stickers on their bins should contact the Clerk, who is currently in the process of sourcing and purchasing, to register their interest.

You can do this direct from the Parish Council website 'contact' page at www.enfordparishcouncil.gov.uk or email/phone as below.

Clerk@enfordparishcouncil.gov.uk or tel: 01980 670034

CrimeStoppers. Speak up. Stay safe.	WILTSHIRE CRIMESTOPPERS	0800 555 111 100% anonymous. Always.
We work with County Police Forces to help reduce crime in our communities and to protect vulnerable individuals.		
The national website is www.crimestoppers-uk.org . should you want to find out more.		



The Pewsey Vale School Parent Teacher and Friends Association has launched an exciting new campaign to raise funds to install a permanent covered outdoor seating area at Pewsey Vale School. The canopy will provide a further separate area at the School which, in the short term, will be used in keeping student bubbles separate during breaks from lessons and, in the longer term, will be used for dining, socialising, relaxing and learning as needed.

The canopy will cost in the region of £16,000 and, towards this, the PTFA can already contribute £8,000. They believe that working with the school community and wider local community, a further £8,000 can be raised to make the covered outdoor space a reality, providing real benefit to current and future pupils at the school. They are asking for pledges to donate and offering incentives for donations. If you are an ex-pupil, a local resident or business and would like to support the PTFA, a registered charity, in providing this infrastructure for this Pewsey Vale School please visit their crowdfunding page:

<http://www.crowdfunder.co.uk/pewsey-vale-school-covid-19-shelter-appeal>



Help for domestic abuse victims in Wiltshire is just a phone call away and available 24/7.

Swindon Domestic Abuse Support Service (SWA) is now providing support to victims of domestic violence across the whole of Wiltshire on behalf of Wiltshire County Council.

Whether you're male, female, young or old, you could need their help. Our lives are being affected by Covid restrictions and for many it's creating a dangerous and frightening situation. Home should be a place of safety and security and a relationship should be based on love and mutual respect but sadly for 2.3 million people a year this is not the case and victims face physical and psychological abuse, coercive control, rape and for two people a week in the UK, they will lose their lives at the hands of their partner or former partner.

Working alongside Trowbridge based Splitz Support Service who offer support weekdays 9am – 5pm, SWA cover Wiltshire outside these hours, evenings, night times, weekends and bank holidays. SWA support all victims regardless of age and gender and run a free, non-judgmental 24hr helpline that's answered day and night by a trained advisor, not a machine. They offer help and support and work with you and at your pace.

SWA whose patron is Dame Esther Rantzen, have a purpose-built refuge facility in Swindon comprising 22 self-contained flats and they offer extensive community support. Their advisors are trained in all areas of abuse across all age groups. **If you are worried about your situation, you can call them in confidence on 01793 610610.**

ENFORD DEFIBRILLATOR

The defibrillator is in a yellow box on the wall of

Hill House, 9 Longstreet, SN9 6DD

Grid Ref SU142515.

It is located in the centre of Enford 25m north of The Swan next to the parish notice boards.

If you think you need to use the defibrillator call 999.

The Emergency Service will give you the code to get into the cabinet.

YOU CAN READ MORE ABOUT IT AT WWW.ENFORDNEWSLETTER.ORG WHERE YOU WILL ALSO FIND A LINK TO A SHORT VIDEO SHOWING YOU HOW TO USE IT.


ENFORD GARDENING CLUB


We are sorry to say that there will be no meetings in April or May, but we are hoping for something in June, and have a garden visit and plant sale planned for July. Our latest Newsletter will be out soon; please let me know if you would like to be added to the list and receive a copy by email.



I hope you enjoy the celandines above; I love seeing them on the edge of the lanes – a real sign that the earth is waking up from its winter sleep.

Happy gardening.

Further details from Fanny Middleton 01980 671645
email: *fannysurtees@btinternet.com*



ENFORD VILLAGE – DOG MESS BINS...

...can be found in the following locations:

- ◇ Near the bus-stop on the A345 at Enford Hill;
- ◇ At the bus-stop junction of Enford Hill and Longstreet;
- ◇ On Water Lane just beyond Grant Road;
- ◇ At the access to the playpark at the end of Grants Road;
- ◇ At the entrance to the Village Hall in Enford;
- ◇ At the west end of the bridge over the Avon on B Crossing.

A map showing the locations is page 22 of the March 2021 newsletter which can be accessed at enfordnewsletter.org.

Please clean up after your dog and use the bins provided. Thank you.



We would like to extend our heartfelt sympathy to Jeni Scott-Dalgleish, and her family, on the passing of her Mum.



Help Prospect Hospice raise £1m to care for those at the end of their life



For the last 40 years, the local community has been there for Prospect Hospice so that they can be there for those who need their help at the end of their life. For that, the hospice wants to say 'thanks a million'.

From the very first day of Prospect Hospice, the care they've been able to give local patients is only possible thanks to the generous donations of local people, groups and businesses. For those who have held bake sales, run marathons, jumped out of planes and raised money in all manner of ways, Prospect Hospice is saying, 'thanks a million'. Covid-19 has had a huge impact on the hospice. While services to patients and their families have continued throughout the pandemic, hospice income dried up almost overnight back in March 2020. With its 18 charity shops closed as well as events and traditional fundraising activities cancelled, Prospect Hospice has had to look at new ways of fundraising, taking activity online. Local supporters have continued to give in any way they can too and, for that, Prospect Hospice wants to say, 'thanks a million'.

But the truth is, this last year, the hospice's income hasn't matched its outgoings. To make sure the hospice can continue to offer the same standard of care to all of those that need it in the local area, they need to raise £1m over the next few months, until traditional fundraising can resume.

Over 25 and 26 April, Prospect Hospice will be launching a 36 hour online fundraiser to raise as much money as possible and all you need to do is let Prospect Hospice set up an online fundraising page for you, sit back and wait for the page link, then share it with friends and family during the live campaign.

Just go to www.prospect-hospice.net and search 'thanks a million' to find out more and to sign up.



Walking in Wiltshire

Are you fed-up with doing the same old walks?



Walking in Wiltshire
www.walkinginengland.co.uk/wiltshire is the
 website for you!

With hundreds of walks to download and print, free, it also has books of walks, contact details for all the walking groups in the county and much more. Whether you want to walk on your own or with a group all the information is there in one place.

John said 'There is so much walking information on the web but it is difficult to find. Walking in Wiltshire (part of the Walking in England suite of websites (www.walkinginengland.co.uk) – one for each county in England) has brought it together in one place so whether you are walking from home, or away on holiday, you will be able to find a walk suitable for you'.

With walks from half a mile to twelve miles plus long, and a note of suitability for pushchairs and wheelchairs, everyone can find a walk to enjoy.

So, home or away, check out the websites and get walking!

John Harris

www.walkinginengland.co.uk

email: john@walkinginengland.co.uk

What's My Favourite...lockdown hobbies

☛ My hobby is crafting and to keep myself busy, during lockdown, I have been making greetings cards. All sorts of simple, pretty cards. I sell my cards in aid of the Salisbury Hospital League of Friends charity, where I volunteer in their hospital sweet shop. It also helps to keep aging, painful hands busy!

☛ I've made two roman blinds and JIGSAWS - Big thanks to Patti Hall-Smith and Tessa Manser for lending me the lovely Wentworth wooden ones. I think I've done nearly 20 since last March - most 1000 pcs but some are 500.

☛ When younger, I used to collect postcards and have sorted through them as a lockdown project. Re-reading them has made me realise they are greater than the sum of their parts and in many cases provide a mini-autobiography of the authors, e.g. my late brother sent them to all his family from a young child and his daughters now have a history of their Dad's travels, covering his whole life and written in his own hand. My elder sister made me laugh by sending cards to my parents, my older brother and me, when she was 16 years old, at her first folk weekend, in which she describes in the first all about the journey and bands she'd seen, to my brother about the boys she's met and to me about the seaside attractions available. Now, there's knowing your audience!

Age UK Wiltshire



- ⇒ We are supporting clients to apply for the Wiltshire Surviving Winter Grant this year
- ⇒ We continue to take applications for our free telephone befriending service and are branching out into other things like telephone book groups, although we now have a short waiting list. We can also refer into free Age UK national telephone befriending.
- ⇒ We are still supporting clients with Attendance Allowance/DLA application forms which is now done through free telephone appointments and turnaround time for us contacting and completing the appointment is around 2weeks or less (with it being backdated to the date of referral to us).
- ⇒ We continue to offer telephone and email advice and support in the usual areas of advice like welfare benefits for older people, housing options and issues and care and support options.

All of the above can be arranged through our Information & Advice team by calling us on 0808 196 2424 or emailing us enquiries@ageukwiltshire.org.uk. You can read about our other services on our website here: <https://www.ageuk.org.uk/wiltshire/>

COVID19 (Coronavirus) - Wiltshire Council

For the most up to date information on Council services that may be affected by COVID-19 and health advice and information, please visit <http://www.wiltshire.gov.uk/public-health-coronavirus>.

This will be regularly updated for all Council services and will hold all information in a central place.

Please feel free to contact **Ian Blair-Pilling** if you have concerns or questions, which you would like him to pursue.

Wiltshire Councillor for The Collingbournes and Netheravon Division
Home: 01980670812 Mobile: 07518942216
ian.blair-pilling@wiltshire.gov.uk

FOR SALE

6 month old Indesit LD85F1W Freestanding Fridge/Freezer,
 50/50,
 A+ Energy Rating, White,
 H189cm x W60cm x D63cm, indoor use only.
 Excellent condition, as new, cost £359, asking £250,

01980 670489.



Enford Camera Club



Meetings remain suspended for the time being.



Photo: Looking forward to Summer...

If you are interested in photography please contact us via email enfordcameraclub@gmail.com



'Are you OK?'

You have a child under five and you're finding things tough, we can help.

Home-Start Kennet helps families struggling with challenges such as isolation, loneliness, poor mental/physical health, financial worries and multiple birth.

We help by giving weekly emotional/practical support. Currently, this is by phone/video call, but will return to home-visiting support as soon as COVID guidelines allow.

Home-Start. We are there for when parents need us most.

For support, Text FAMILY to 66777 www.homestartkennet.co.uk

Email: hskadmin@homestartkennet.co.uk

Home-Start Kennet (part of Home-Start UK) is a company limited by guarantee. Registered in England & Wales no. 5208226. Registered charity no. 1106736.

Wiltshire Council Public Health

Surviving Winter Fund

Wiltshire residents can claim up to £250 (whilst funds last!) to help with their heating and fuel bills over the cold period. This time round we are paying either for top up vouchers for their prepayment meters or credit into their energy account if they pay by direct debit. We can also help with solid fuels also such as LPG gas bottles, wood or coal.

To be eligible, you will need be in receipt of a means tested benefit, of pension age, or of working age and receiving a disability benefit (or you/someone in the household has a health condition worsened by the cold). You also need to be struggling with your fuel bills and keeping your home warm.

The fund can also help with boiler repairs of up to £300.

To apply, call our advice line number on **0800 038 5722**, or you upload required evidence using [this](#) link. We would need either recent benefit award letters or a recent bank statement showing benefits being paid into you account. It is not essential that all of the information is provided in the referral as we will be picking these up and calling those back to gather any additional information! We can also provide freepost envelopes for those to send their evidence back to us.

The Surviving Winter Fund is first come first served, and the deadline will be in **May**. If the grant money runs out we can look at other funds your client may be eligible for, so please make referrals to the fund as soon as you can.

If you're still feeling FED UP with lockdown and desperate for more chocolate, then this is the one for you!

Chocolate Biscuit Cake

- 12 oz plain digestive biscuits
- 9 oz Bournville choc
- 4 oz Butter
- 4 Tablespoons Golden Syrup



Put Butter, Choc and Golden Syrup into a saucepan and gently heat till a smooth thick consistency.

Crush the biscuits with a rolling pin, leaving some little bite sized pieces.

Fold into choc mixture until all coated.

Line square/ oblong tray bake tin with greaseproof paper and pour in mixture .

Put in fridge.

Cut into squares.

Eat!

ENFORD PARISH COUNCIL

Abridged Draft Minutes of the Zoom meeting of 9th March 2021

21/003 Police Matters and Neighbourhood Watch

The Police Report had been received and circulated to all Cllrs. There were no reported incidents in Enford. Cllr Roberts mentioned the Neighbourhood Watch report which he had received showing a lot of Police and MoD Police activity in the area with some arrests. Here coursing continues but will hopefully have been reduced by the policing activities.

21/005 Unitary Council Matters

W.Cllr Ian Blair-Pilling joined the meeting briefly as he had 3 other meetings to join as well. He had three points he wanted to raise:

- i. The latest news on the re-opening of schools was going well with only one case of Coronavirus showing so far. The greater levels of testing will hopefully keep a lid on any outbreaks and immediate action can be taken.
- ii. In a recent conversation with the Head of Elections for Wiltshire, it was disclosed that W.C. would appreciate as many people as possible using the postal voting system in May. Polling stations will be open and manned however they obviously can create an opportunity for the spread of the virus.
- iii. The boundary changes which come into effect from May will see Enford, Fittleton and Netheravon change from the Tidworth Area Board to the Amesbury Area Board. The geographical route south from Enford includes many areas where military and civilian facilities for children overlap and one of the main aims is to bring these groups/projects together and offer all children and families a greater range of activities and groups with which to become involved. WCllr Ian Blair-Pilling is already talking with the established Amesbury Board to start to develop this program. He also confirmed that the 'Paths for All' project would continue and hopefully expand into the Amesbury Area.

Cllr Roberts raised a query on the extent of WC's increased budget proposals and also whether the Council were changing their parking machines over from cash to contactless. WCllr Blair-Pilling confirmed both the increase in budget proposals and the change in cash to contactless parking machines.

21/008 Matters Arising

- i – Council's agreement to spending £2,375 on the 20mph speed limit through the central part of Enford had previously been mentioned. It should be recorded that Cllr Coulthard proposed this and Cllr Hiskett seconded the proposals with all other Cllrs in agreement.
- ii -Wheelie bin speeding stickers. – New residents in the Parish wrote to the Clerk requesting 30 mph speeding stickers for their bins on the A345. The Parish Council does not supply these and a discussion was had on their merits and whether 20mph stickers could/should be used on C32. Initial research shows 50x 30mph stickers would cost approx. £60.00 and 100x 20mph stickers approx. £100.00. It was agreed that as a trial-run, the Parish Council would purchase a small supply of stickers which would be available on a 1st come 1st served basis for those living directly on through roads. The Clerk was asked to organise this and advertise the trial scheme through the Newsletter.
- iii. Elections – Council elections will be held this year on 6th May. This is for County Councils, Area Boards, Town and Parish Councils. Every Cllr serves a 4-year Term at which point they either stand for re-election or stand down. Every member of the Parish who wishes to stand may do so – please see information and guidance on the website notices (www.enfordparishcouncil.gov.uk). Providing you are eligible to stand, you can download the forms from the link given, get two residents to sponsor you and hand deliver your nomination to the Council address given in Salisbury by 4.00pm on 8th April. The Clerk will then be informed as to whether those applying (less than 11) may re-stand or (more than 11) whether an election would need to take place. Any further questions, please contact the Clerk.
- iv. Census 2021. Census day is Sunday 18th March. The Census is a 10 yearly event and assists with planning for future services – schools, buses etc. Everyone is encouraged to complete the questionnaire so as to give the most accurate picture for planning and development. There are full details available online and notices available on the

Noticeboards, the Newsletter (hard copy and website) and the Parish Council website. You can complete the Census as soon as you receive your notification through the post. Whilst every encouragement is given to do this online, if you wish to receive a paper copy, tel numbers are given for requesting these in the notices. There is also help offered for completing the questions, please see the relevant 'advertising'.

v. Cllr Cliffe-Roberts confirmed he had replied as agreed to the proposed Aster Housing plans but has since heard nothing.

21/009 Resident's issues Raised.

Cllr Roberts reported that since the last meeting in January he had received a variety of calls raising issues. As these go back over some weeks and have since been resolved he read out a list of them rather than discussing the detail. These included a large dog who though friendly was not under its owner's control and frightened another resident. Concern regarding land along Coombe Lane which was merely being tidied up and not being built on. The mess left behind from felling the Ash trees around the area and a query as to the promised replanting. The flooding problems of a particular house in East Chisenbury, the owner had reported straight to their MP and the matter had filtered down through WCllr Blair -Pilling and Highways to Parish level. The continued moving of somebody's wheelie bin. An update from WC on the situation at the old Mink Farm site, they are watching it closely. A query as to the maintaining of a 20mph speed limit, would this involve road lines or speed bumps etc. and finally the parking problems in Longstreet once the pub is again able to open. Cllr Roberts did point out quite correctly that **all** such queries should be addressed to the Clerk initially – (this can easily be done from the Parish Council website).

21/012 New Playpark

As previously noted, a repair and maintenance group of Cllrs will be gathering as soon as restrictions allow, hoping all goes to the current plans this should be after 29th March. As Cllr Waight is most needed for this task he has offered Saturday 17th April at 10 o'clock. Any members of the Parish would also be most welcome to assist. As of a bank statement received on 9th March 2021, the fundraising account for new equipment has £4,542.27.

21/013 Parish Hall

Cllr Cliffe-Roberts said that there had still been no response from Wiltshire Planning, but the now confirmed reduction of the speed limit to 20mph through the village should help the Garden/Car Park proposal. He has 'chased' the Planners for an answer to his request for 'pre-application advice', as he and the rest of the Parish Hall Management Committee are keen to progress matters after this lengthy delay.

21/014 Roads and Highways

Cllr Coulthard reported that the Parish Steward was now back on his regular visits. There were no major problems to be dealt with. Cllr Waight noted that in the last 3 months 3 vehicles had come off the A345 into the field between his farm turning and Cllr Coulthard's house.

21/017 Any Other Business

- i. The Clerk pointed out that as we are now in March LJS Garden Services will be back 'on duty' maintaining the Community Garden area and the Playpark.
- ii. In absentia, Cllr Holdway asked about a path going up the side of Water Lane which is narrow and dangerous for pedestrians. There isn't anywhere obvious for a path and after a brief safety discussion, Cllr Coulthard suggested a line painted in the road approx. one metre wide. This could make a pedestrian 'zone'. Cllr Exley pointed out that there were similarly narrow parts of the C32 throughout the village where there is no path and asked where one stops painting lines? Cllr Coulthard suggested the new speed limit may well help to change the dangers for pedestrians and also that this could be reviewed in future.
- iii. Cllr Coulthard asked about arranging a date for a Parish litter pick. It was agreed that Saturday 26th June could be the date, assuming all restrictions are lifted by then. The Clerk was asked to organise this.

21/018 Date of Next Meeting

Tuesday 13th April 2021 at 7.30pm either by Zoom or email.

Where is this?

You'll remember that local runner, Anne Heath, kindly provided 6 photos last month, which she'd taken whilst out running, and she begged the question "Where is this?". The suspense is over!



The three above are all East Chisenbury

C32 from Upavon towards East Chisenbury

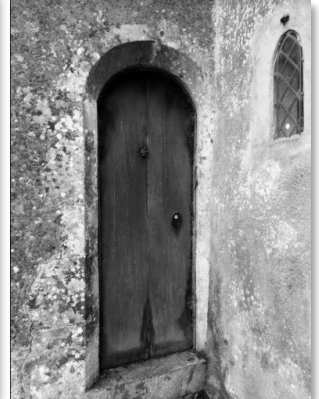


Looking towards Compton



C32 from Enford towards E Chisenbury - but it doesn't look like this now that the Ash trees have been removed because of Ash dieback.

This month, Anne asks the question "Which door holds the key?"



If you've got photos of the local area that you'd be happy for us to print, why not send them in? You can remain anonymous if you prefer.

International Bomber Command Centre

In Enford we live among the history and the present realities of what the armed forces do for us, most notably the army, but other counties have also played essential roles for other services. This item is about Lincolnshire, the Air Force and specifically, Bomber Command.

The International Bomber Command Centre project includes recording, preserving and relating the stories of all those involved with, or impacted by, Bomber Command during the Second World War. Covering the contribution of the men and women from over 60 nations, at all levels, the project brings to life not only the period of the War, but the fight to gain recognition and the work undertaken to rebuild Europe's cities.

Lincoln has been chosen for the site as it provides a central point for all 27 bases that earned Lincolnshire the title of 'Bomber County'. Lincoln Cathedral provided a landmark for crews both leaving and returning from missions and, for those who failed to return, the Cathedral was often their last image of home. The county housed over a third of all the WWII Bomber Command Stations, making it the ideal home for this commemoration of the bravery of the men of Bomber Command. The IBCC will provide one of the most comprehensive records of Bomber Command in the world and will ensure that generations to come can learn of their vital role in protecting the freedom we enjoy today.

The Spire commands stunning views across Lincoln and is now recognised as the UK's tallest war memorial, at the highest, 102ft (31.09m) high, the wingspan of the Avro Lancaster bomber and 16ft (5m) wide at the base, the width of a Lancaster wing.



The Walls of Names remember almost 58,000 men and women who lost their lives serving or supporting Bomber Command during WWII. They surround the Memorial Spire in a series of circles framing the view of the City and the Cathedral. Every life lost in Bomber Command was equal in sacrifice and as a result the walls do not recognise rank or medals awarded. The IBCC is the only place in the world where all these losses are commemorated.

They surround the Memorial Spire in a series of circles framing the view of the City and the Cathedral. Every life lost in Bomber Command was equal in sacrifice and as a result the walls do not recognise rank or medals awarded. The IBCC is the only place in the world where all these losses are commemorated.



The Ribbon of Remembrance is formed of stones laid by friends and family as memorials and have been placed for a wide range of individuals and groups, including veterans, volunteers, Lincolnshire residents and even a dog! It connects the Visitor centre to the Spire and Walls.

As well as these stunning memorials, both of which are free of charge, there's much more to do there including a café – we all need refreshment at some point! It's not a local memorial, but we may not be able to holiday abroad this year and if you knew/know anyone involved in Bomber Command you may be interested and hopefully can find their name on the Walls and in their archive.

Further information can be found at
<http://internationalbcc.co.uk/>.

www.enfordparishcouncil.gov.uk

ENFORD PARISH COUNCIL - NEW WEBSITE

Due to Transparency and Accessibility laws the Parish Council now has a fully compliant website for all of their business. This includes archives of Minutes and Accounts. There is also relevant information on the Parish Council itself – the Standing Orders, Code of Conduct, Register of Assets, Emergency Plan documents etc.

Another aspect of the website is a subscription to all residents, free of charge. This allows you sign up and as soon as any posts or notices are uploaded – such as Road Closures, Planning Applications, Agendas, Minutes etc. - you will receive an alert and so be completely up to date with any information relevant to the Parish.

If you wish to raise any matter with the Parish Council, you can do so via the 'Contact' page and email the Clerk direct. The Clerk can then pass this information/query on to the relevant Councillor or to them all, thus ensuring everyone's concerns are listened to and actioned when and where appropriate.

Do please visit the site, add it to your favourites and sign up as a subscriber to the immediate notices.

SPTA NEWS

For Salisbury Plain Training Area News, giving times of live firing, current and upcoming exercises go to

<https://www.gov.uk/government/publications/salisbury-plain-training-area-spta-newsletter>

*Very disappointed
that the daffodils
i planted last year
turned out to be
marigolds...*



GARDENING TIPS FOR April



FEED! - Roses, hedges, shrubs, borders, trees, grass and spring bulbs with a general purpose fertiliser.

MOW - Light mow at least once a fortnight and treat moss and weeds and re-seed bare patches.

FORSYTHIA - after flowering, cut the flowered stems back to a strong new, leafy side shoot and remove one or two of the oldest stems to the base.

HOUSE PLANTS - time to re-pot them in clean pots a couple of sizes bigger than the original - Use a similar compost.

LAVENDER - if you didn't prune last autumn, do so now and remove spent flower spikes and shorten growing shoots by around 2.5cm.

BULBS - Wait 6 weeks after flowers before cutting foliage of spring bulbs.

PERENNIALS - Continue planting perennials and finish dividing and replanting summer-flowering perennials.

HARDY ANNUALS - Plant out those grown in the autumn. and start sowing them outside.

DAHLIAS - If you kept your dahlia tubers inside over winter, plant the dormant tubers outside at the end of the month.

VEGETABLES - Outside: Sow broad beans, tomatoes, summer cabbage, Brussel sprouts, early peas, cauliflower, sprouting broccoli, leeks, beetroot, radish, spring onions, lettuce, rocket, turnips, kohlrabi, spinach, parsnips, Swiss chard, chicory, endive carrots and onions and herbs.

Inside: Sow tomatoes, cucumbers, sweetcorn, French & runner beans, marrows, pumpkins, squashes and courgettes - these will go outside later.

POTATOES - Plant first early, second early and main crop potatoes.

GREENHOUSE - Open the door on sunny days but close mid-afternoon to retain the heat overnight.

HARDENING OFF - On good days start putting out bedding plants and frost-tender vegetables in their pots, returning them to the greenhouse or cold frame overnight.

CUTTINGS - Take cuttings from big, old plants.



Do you have some time to spare to support local older people?

Information about all our roles can be found:

- ⇒ on our website www.ageukwiltshire.org.uk or
- ⇒ by calling our office on 01380 727767
- ⇒ or emailing us at volunteering@ageukwiltshire.org.uk



Wiltshire Council “We’re Targeting Fly-tippers Campaign”

Wiltshire Council has launched a reward campaign to reduce fly-tipping throughout the county. They are urging anyone with any information about fly-tipping in Wiltshire to report it to them with as much information as possible, and any successful prosecution will earn a voucher of up to **£200** for the person who reported it.

IMPORTANT: Do not try to rummage through or disturb the waste, as this could affect the scene and put people in danger. It is also essential that people do not attempt to confront anyone who is fly-tipping or put themselves in danger in any way.

To report fly-tipping in Wiltshire, or to find out more about the campaign, including terms and conditions, go to:

www.wiltshire.gov.uk/community-environment-wtf.

Advertising

To advertise here, just call Jeni Scott-Dalglish on 01980-670210 or 07779 986920

£22 1/8 page; £48 1/3 page £60 1/2 page and £100 full page for 10 issues.
Prices can be negotiated for other sizes/periods.



01980 671124



Bakery on a Bar

Every Saturday & Sunday 9am

Join us every Sunday morning for coffee and a breakfast treat to take away. Team Pastry is lovingly producing hand-made pastries, fresh doughnuts, cinnamon buns and so much more...

Outside dining from 15th April

We are now taking bookings for outside dining in our covered, lit and heated garden.

Ready Meals

All dishes come fully prepared and cooked. All you have to do is follow our simple instructions to reheat and “voila” ... restaurant meals at your kitchen table (even a perfectly cooked chateaubriand steak!) in less than 20 minutes.

For collection Friday & Saturdays.

Easter Sunday by Red Lion

Sunday roasts including; Slow roast West Farm pork belly and Stokes Marsh

Farm chateaubriand of beef from £40

01980 671124

www.redlionfreehouse.com



There's a buzz nationally at the moment isn't there – a tangible excitement that things are moving in the right direction and at The Swan, it's no different. We've got everything crossed that the numbers keep going down and restrictions can slowly lift over the coming months. Last time we wrote, we didn't feel that we were able to plan with any certainty but this is now changing and we're hoping to reopen in April or as soon as the Prime Minister allows after that.

Every time we write our plans in this newsletter, it seems another thing comes along to thwart us however, we're going for it and want to outline our plans to reopen in April so that you can all get booking! As with every other pub nationally, no one is really sure what caveats will be in place for pubs and restaurants to open but outside seems to be the way to go. This has led to discussions with our insurers about tents, marquees, heating, thatched roofs and more!

You might have seen Pete, Jemma & Jake working hard on the outside of the pub during the week (it's looking great!) and we've been making changes inside too as well as prepping the back garden for a cover to ensure you can eat and drink with us in all weathers.

We plan to reopen on Wednesday 14th April (so long as this is agreed nationally).

Opening hours until restrictions ease further will be:

Wed – Fri
12noon – 3pm and then 6-10.30pm
(food served until 2.30pm and 9pm
respectively)

Saturday
12pm – 11pm
(food until 9.30pm)

Sunday
12pm – 5pm
(food until 4pm)

Tables can be booked under cover in the back garden and we're keeping the front tables available on a first come, first served basis.

All of our COVID safe measures will be in place and we're planning Swanfest too as well as other events for the autumn...things are looking up! Thank you for bearing with us in the last few months. Not being open has been hard to bear as we very much believe in being here for the village but it's protected the business and means we can come back strong! We look forward to welcoming you all back once again....

Swanfest is back!

An end of summer party!

With national events and festivals going ahead, we thought it was time to look forwards and get planning for our little corner of Wiltshire.

Providing case rates continue to drop and it's safe, we'll be welcoming bands and beer as well as all of you lovely people back to Swanfest this year. Well, we've got to plan ahead!

SATURDAY 29TH AUGUST 2021
1pm until late

www.theswanenford.co.uk

01980 670338



Nectar of the Dadd's

HONEY ● BEES ● BALMS

PRICES FOR MY LOCAL HONEY
 8 OZ JAR £4 ● 12OZ JAR £5 ● 1LB JAR £6

Contact Janet on 07768140027
 Feel free to pop over: 77 Fifield, Enford, SN9 6DQ

 Find us on Facebook NectaroftheDodds



LANDSCAPING

Garden Transformations
Hard Landscaping Specialist


Qualified and accomplished in all aspects of garden landscaping with 16 years experience.
 Call or email Dan Withers to discuss your needs.

07833 248269 dwithers.landscaping@gmail.com

S.O. CHIMNEY SWEEPING

- ◆ Camera Surveys
- ◆ Fully Insured
- ◆ Friendly Local Service
- ◆ Birds Nests Removed
- ◆ NCSSA Registered
- ◆ Cows Fitted

Call Sean on 07881 206536 email: seanoades@hotmail.com
www.SO-chimney-sweeping.co.uk



Artisan Hand-crafted Mallorcan Dry Gin
distilled to perfection by Eva & Stefan

Fall in love
With fresh flavours
of Mallorca

NICHE ALCOHOL SUPPLIES
 SALES AND DISTRIBUTION

www.nascorporation.co
ginevasales@nascorporation.co
 0203 141 0950

Ultra Premium 10 year Rum

KNUTHANSEN
 DRY GIN

NORDIC HAND CRAFTED

WORLD GIN AWARDS GOLD

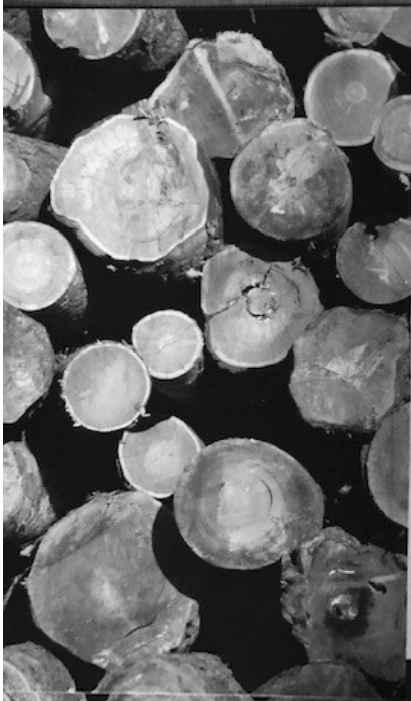
KNUTHANSEN



**Charlotte's
Handy Services**
07483 102765

Working in Wiltshire
www.charlottes-handy-services.co.uk

Need a little help with those DIY jobs, or have a bigger job that needs doing, then I am here to help! I offer painting and decorating, general DIY, plumbing, gardening, moving furniture, building flat packs, putting up shelves and much much more. Call Charlotte on 07483102765 or email [charlotteshandyservices@hotmail.com](mailto:charlotteshandyshandyservices@hotmail.com).



OAKLAND TIMBER

Quality Seasoned Firewood
07584 091446

Seasoned Firewood & Kiln-dried
Firewood available. Delivered in Bulk
Bags.
Kindling also available



Firewood Supplier

www.oaklandtimber.co.uk



WILTSHIRE WILLOW: LOGS AND FIREWOOD FOR SALE

Seasoned and split logs, kindling and firewood
Ideal for wood-burning stoves and open fires

***Trailer loads for £90.00**

***Weekend bags for £30.00**

Kindling and stacking on request.

To order your free delivery, please call Martin on 07788 429772

DELIVER FREE WITHIN 5 MILE RADIUS OF ENFORD

TIM BUCKLAND BOILER MAINTENANCE

FOR SERVICE AND BREAKDOWNS

*Friendly and efficient service
Wide stock of boiler spares in stock*

VERY COMPETITIVE PRICES

Also AGAs and RAYBURNS serviced

Tel: 01980 551386

AKER FIRE & SECURITY

INTRUDER ALARMS, CCTV,
FIRE ALARMS & EXTINGUISHERS
ELECTRONIC GATES
Service and Installation
Tel 07515358875

email info@akerfireandsecurity.co.uk



Advertise here
at reasonable
rates

flexible sizes
and terms
available

Contact Jeni Scott-Dagleish
01980-670210 or 07779 986920
or email her at
enfordnewsletter@gmail.com

Bits & Pieces (Durrington Ltd)

BUILDING, GARDENING & DIY

PETS, PANELS, AGGREGATE

37 - 39 Bulford
Road, Durrington
Wiltshire SP4 8DL

Tel: 01980
655552

Proprietors: P & M Conn

MOTOR THE **GARAGE** LTD

Servicing, MoT tests and Repairs for
Classic Cars as well as Modern

Telephone: 01980 670348

www.themotorgarage.co.uk
enquiries@themotorgarage.co.uk

Netheravon, Salisbury, Wiltshire, SP4 9RH



18 The Bluestone Centre, Sunrise Way, Solstice Park, Amesbury, Wiltshire,
SP4 7YR

T: 01980 258472 E: equidae-equineservices@outlook.com

We sell a variety of

Equine Feed, Supplements and Health Care Products

Field and Stable Accessories

High Viz items

Clothing

Equine and Small Animal Bedding

Poultry Feed, Oyster Shell and Grit

Dog Feed

Small Animal Feed

If you require something not in stock, let us know and
we will try to get it for you.

Also Available

Rug Wash and Reproofing Service

Horse Rug Repair Service

Horse Trailer Hire

Paddock Cleaner Hire



Digger & Mojo

WOODBOROUGH

DECORATIVE ANTIQUES &
VINTAGE EMPORIUM
WORKSHOPS & CHRISTMAS GIFTS



We restore Antiques + revamp your Furniture
Mending • Painting • Reupholstery



Shop/Office: 01672 851 510
Email: ask@diggerandmojo.com
www.diggerandmojo.com

*"IT'S A KIND OF
MAGIC"
Salisbury Life Magazine*

WOODBOROUGH GARDEN CENTRE
WOODBOROUGH, PEWSEY, WILTSHIRE, SN9 5PF

OPEN 7 DAYS 11am - 5pm

Stay healthy this winter and learn how to support your immune system

Find out more from

SARAH WILLIAMS MNIMH MAPA

Medical herbalist

Ayurvedic practitioner

Nutrition and Functional Medicine

Telephone 01980 652563

Email: sarah@sarahwilliamsayurveda.com
www.sarahwilliamsayurveda.com

ENGLISH COUNTRY GARDENS

Garden & lawn maintenance, hedge and tree work, fences, driveways & weed control
Garden waste removed.

Qualified, fully insured and licensed, 23 years experience

WE SUPPLY

Mushroom compost, manure, Pro Grow, woodchips, gravel, stone & scalplings

Loads of logs by size: £85, £160, £190

All seasoned & dry native species.

Can stack (extra charge)

Bags of kindling: £5 or 5 bags for £20

LOGS NOW
AVAILABLE IN
1& 2-TON BAGS
For convenient
outside storage

Call or text Nick on 07835299247

Free Delivery

Avon Security

MASTER LOCKSMITHS

Engraving Service Now Available

- > Brass
- > Plastics
- > Aluminium
- > Glass
- > Trophies
- > Gifts

Free Advice & Quotations On Securing Your Property & Belongings

- Key Cutting
- Locks Supplied & Fitted
- Access Control
- Safes
- PVCu Locks
- Master Key Systems
- Lock Repairs
- Door Furniture & Ironmongery
- Transponder Car Keys
- Keys To Code
- Watch Batteries & Straps
- Emergency Call Out Service



01980 626000

21, Salisbury Street, Amesbury, Wiltshire, SP4 7AW
www.avonsecurity.net



body fitness studio **works**

Abbey Square Amesbury Tel:- 01980 625050

Affordable Personal Training !!

Are you bored at the gym?

Are you tired of being left on your own?

Do you want better results?

You're not on your own at our club!

***We teach, motivate and help you achieve
your desired results***






CALL US NOW ON: 01980 525050



Plumbing, Heating, Electrical & Renewable Energy

Solar Thermal & PV, Air & Ground Source Heat Pumps, Ventilation, Boiler Replacements. Domestic, Commercial & Industrial Contractors. Family Business Established 1970.

Free Estimates and Advice:
 Tel: 01980 670667 Fax 01980 670811
www.rgvengineering.co.uk info@rgvengineering.co.uk

MODERN & TRADITIONALLY DESIGNED MEMORIALS

M J SLY

*Monumental Stonemason
 New Memorials, Additional Inscriptions
 Restorations, Free Home Visits
 Free Brochure*

Marlborough (01672) 516797
 Email: martin@mjsly.co.uk
 Website: www.mjsly.co.uk
 Workshop & Showroom at Pelham Court,
 London Road,
 Marlborough, Wiltshire
 Open by appointment only

Oil Boiler Servicing
 Commissioning & Repairs

Call Graham C Brown & Son
01980 622737

Fully Qualified  Fully Insured

Experienced Technician

LB FOOT HEALTH 

Offering home treatments for a variety of conditions including:

- ◆ Corns
- ◆ Hard Skin
- ◆ Nail Cutting
- ◆ Diabetic Foot Management

Leanne Burden Dip FH MCFHP MAFHP
 T: 07824 797578

“PAMCAKES”

*Bespoke Cakes for your special occasions (any age group).
 Traditional and 3D, cupcakes and some Wedding Cakes. See my FB page “pamcakes of netheravon” for more details & website
pamcakesofnetheravon.co.uk
pamcakes@writeme.com or call
 07919656141*

Art Classes

Collingbourne Kingston
 Thursdays 13:30 – 16:00

Water Colour - Acrylics
 Drawing

Learn about colour, composition, values
 Want more information?
 Alta Edwards 07709718280
altaedwards22@gmail.com



Bespoke Fashion Design and Dressmaking for any occasion.
 For more details contact
 Ramona Edwards
rhensel85@gmx.de // 07827597084

MOBILE HAIRDRESSER

Ring Donna

on

07711 579403

Jonathan Green Antiques

We Buy & Sell

Silver
Jewellery
Gold Coins
Anything interesting
Home Visits no obligation

Repair & Restoration

Silver
Jewellery
Hand Engraving
Machine Engraving
Remodelling of Jewellery

You can find us at the rear of the ground floor.

The Antiques Market
37 Catherine Street
Salisbury
SP1 2DH
01722 332635

Email: jg@jonathangreenantiques.co.uk



Looking for something special?

Based in Coombe, I am a professional wood turner offering a wide range of hand turned wooden items made from a variety of local and exotic woods

There are many items available to buy from my website including a range of bowls, platters, vases, boxes and decorative trees

I am always delighted to discuss making something to your own design even using your own wood if you have a special occasion in mind

Vouchers are also available for training and taster sessions where I provide one to one tuition specifically tailored to your requirements



Contact: George Shapland

01980 671321

george@butterwood.co.uk

www.butterwood.co.uk



ENFORD VILLAGE HALL & RECREATION GROUND

Contact Details:

Booking Officer 01980 670501
enfordvillagehall@btinternet.com
www.enfordnewsletter.org

Chairman 01980 670501
 Grounds Officer 01980 670210
 Maintenance Officer 01980 670526
 Treasurer 07788 426473

The Village Hall is temporarily closed during the current lockdown but Contact Details for organisers of Clubs and Classes are included below if you would like further information.

Day	Activity	Time	Contact
Monday	Yoga	6.30pm – 7.45pm	Emma Pettitt 01980 670510 emma@petittbros.co.uk
Tuesday	Enford Film Club	4th Tuesday in the month Doors open 7.00pm	01980 670501 enford-villagehall@btinternet.com
Wednesday	Short Mat Bowls	7.30pm – 10.00pm October - April	David Spencer 01980 670526 spencersqb@yahoo.co.uk
Thursday	Pilates	8.30am – 9.30am	Nicci Caswell 01980 625245 Work nicci@thecaswells.uk
Thursday	Camera Club	8.00pm – 9.00pm 1 st Thursday in the month	Martin Webb 01980 670537 webb14@btinternet.com
Thursday	Gardening Club	7.00pm – 9.00pm 2 nd Thursday in the month	Fanny Middleton 01980 671645 fannysurtees@btinternet.com
Saturday	Enford Junior Football Club	10.00am - 11.00am Recreation Ground	Ollie Stagg 01980 670634 Steve Todd stodd@qinetiq.com
Sunday	Salisbury League Durrington Football Club	11.00am – 1.00pm Check dates with organiser	Scott Jackson Mob 07854 284451 scott3a@hotmail.co.uk

Private Parties

The Village Hall is the perfect venue for Weddings and special Anniversaries or Birthdays. It is also ideal for Children's Parties and Christening Celebrations – or for any other excuse for a celebration!

VILLAGE COMMITTEES

PARISH COUNCIL www.enfordparishcouncil.gov.uk

Chairman	Richard Roberts	671055
Vice Chairman	Mark Hiskett (PROW)	670955
PCC Representative		
Public Rights of Way		
Planning	Peter Cliffe-Roberts	671676
Parish Clerk	Elizabeth Harrison	670034
Playpark/Village Amenities and Youth Representative	Jane Young	670532
Neighbourhood Watch/ Police Liaison	Charlotte Clark	670276
Tidworth Area Board and Village Hall Representative	Anthony D'Arcy Irvine	670501
Flood Warden	Bruce Waight	670113
No specific role	Pat Holdway	671792
No specific role	Vick Exley	07870 189235
Steward contact	Rob Coulthard	670967

NETHERAVON SCHOOL

Chairman of Governors	Mr Richard March
Head Teacher	Mrs Gillian Durrans

NEWSLETTER

Chair	Vacant
Vice Chair & PC Rep	Jane Young
Secretary & Advertising	Jeni Scott-Dalgleish
Treasurer	Roz Perry
Village Hall Rep	Jacqui Elkins
Compiler:	Sue Cosgrove
Committee Member	Gay Monk
Committee Member	Ann Houghton

PAROCHIAL CHURCH COUNCIL

Church Wardens	Tim Edwards
Treasurer	Tom Hunter
Secretary	Tom Hunter
Council Members:	Mary Burdick
	Sue de Candole
	Anastasia Dubovik
	Venetia Field
	Fiona Leakey
	Fanny Middleton

VILLAGE HALL

Chairman and Booking Officer	Judy D'Arcy-Irvine (670501)
Vice Chairman	Vacant
PC Rep	A D'Arcy-Irvine
Secretary	Hamish Scott-Dalgleish
Camera Club	Jane Young
Newsletter	Jacqui Elkins
Property Officer	David Spencer
Grounds Officer	Hamish Scott-Dalgleish
Gardening Club	Rosemary Cox
Short Mat Bowls	David Spencer
Junior Football Club	Ollie Stagg

USEFUL NUMBERS

EMERGENCY SERVICES

DOCTORS

DURRINGTON	Avon Valley Practice Surgery	01980 652378
LARKHILL	Larkhill Medical Centre	01980 845266
UPAVON	Avon Valley Practice Surgery, Fairfield	01980 630221

HOSPITAL

SALISBURY DISTRICT HOSPITAL	01722 336262
-----------------------------	--------------

POLICE

POLICE	101
--------	-----



OTHERS

ELECTRICITY	105
ENVIRONMENTAL AGENCY	0800 80 70 60
FLOOD LINE	0345 988 1188
GAS	0800 111 999

DURRINTON LINK

LINK (Durrington & District)	01980 594857
------------------------------	--------------

SCHOOLS

DURRINGTON, Avon Valley Secondary School	01980 652467
NETHERAVON, All Saints' C of E Primary	01980 670339
RUSHALL, Rushall C of E Primary	01980 630360
PEWSEY, Pewsey Vale Secondary School	01672 565000

WILTSHIRE COUNCIL

BIN COLLECTIONS	0300 456 0102
-----------------	---------------

<http://www.wiltshire.gov.uk/rubbish-collection-day>

HOUSEHOLD RECYCLING CENTRES (HRC)

<https://www.wiltshire.gov.uk/household-recycling-centres>

HQ SALISBURY PLAIN TRAINING AREA

999 MOD Police Control Room - **Crime in progress**

01371 854444 - MOD Police Control Room - *Non-emergency crime on SPTA only*

01980 674951 to call 24hour Range operations - *To report suspicious activities or dangerous issues.*

01980 620819 Complaints Line - *The only way to make a complaint.*

0800 022334 - Landmarc National Service Centre - *To report damage to training area or fly-tipping*

Health & Safety reminder for all Military Training Areas & Ranges:

Do not touch or tamper with Military debris.

Wash your hands before you eat.

Clean your footwear before you enter your car or home.