

## Useful information

### Vehicle safety checks and driving tips in the winter weather:

The first thing to do is to check the tread on your tyres:-

The legal limit is no less than 1.6 millimetres (mm) across the central ¾ of the tread, around the complete circumference of the tyre. Remember this is the minimum tread allowed. At 1.6mm on wet roads it takes an extra car length (8 metres) to stop at 50 mph than if your tread was three millimetres. Do not reduce tyre pressures to get more grip – this is a myth; it doesn't work and reduces stability. Bear in mind, if you are involved in an accident where serious injury occurs to either yourself or someone else, it is normal procedure for your vehicle to be removed from the road and every part of it examined thoroughly.

Keep the windscreen and other windows clear – if your vision is obscured through dirt or snow whilst you are driving, you could receive a fine but most importantly it will make your journey and is a danger to other road users and pedestrians. Ensure your windscreen washer bottle is kept topped up with the correct level of recommended solution strength for winter.

Keep a small bag or shoe box size plastic container of salt in the boot in case you get stuck on a slope or hill. It would be considered luck getting stuck adjacent to a street grit bin! Don't forget to also have a trowel sized implement in the boot to distribute the salt or clear snow in front of your tyres. Keep a warm jacket and gloves in the car, a pair of waterproof shoes, wellies and a torch in case you have to abandon your car. Consider joining a recovery agency in case you break down. With no cover in place, an independent call-out is very expensive. Give yourself an extra 10 minutes to clear your vehicle before leaving home, plan your route to include main roads as these are more likely to have been gritted.

Driving on snow and ice - Slow manoeuvres and braking gently are the key to safe driving and stopping. Allow yourself extra distance from the car in front. Ensure there is no snow on your shoes as they may slip off the pedals whilst driving. If you have to drive up a hill, avoid stopping part way up by waiting until it is clear of other cars ahead or by leaving plenty of room between you and the car in front. Keep a constant slow steady speed, choose the most suitable gear well in advance to avoid having to change gear on the hill. When travelling downhill reduce your speed before the descent, use a low gear and try to avoid using the brakes. Again, leave as much room as possible between you and the car in front. If your car gets stuck at any time, straighten the steering wheel, clear the snow from the wheels and sprinkle some salt in front of your wheels.

A lot of drivers get stuck in the snow and ice because they have left home poorly prepared. Read the road – keep your distance – be prepared to take action if the car in front of you or the car in front of them gets into difficulty – don't become complacent and never assume you will always be able to see ice on the road surface.

#### Measurement Evaluation Learning (MEL) Survey 2013:

During January and February 2013 Wiltshire Police will be undertaking the second stage of the Measurement Evaluation Learning (MEL) Survey. This survey will be conducted via telephone and seeks to explore quality of life, reassurance and fear of crime across Wiltshire and Swindon.

## WILTSHIRE POLICE

### Tidworth Neighbourhood Policing Team

January – March 2013

Quarterly newsletter



### Your neighbourhood priorities

Welcome to the Tidworth Neighbourhood Policing Team (NPT) newsletter. We held our latest Neighbourhood Tasking Group (NTG) meeting on Thursday 13 December 2012 with representatives from several different partner agencies, including the local council and Aster Communities, to discuss the next three month's priorities.

#### Update on last quarter's priorities:

**Anti-social behaviour at the junction of The Ram, Tidworth:** A successful campaign of visible and regular policing at appropriate times has meant that very few instances of crime or disorder occurred. This allowed people to enjoy themselves throughout the recent festive period.

**Speeding along the A338 in Collingbourne Ducis:** This was a successful campaign of visible patrols and regular speed checks in the area.

**Young people behaving anti-socially at Ludgershall Rec:** A successful campaign of visible and regular police patrols in the area at appropriate times has meant that these problems have decreased significantly.

#### The group decided on the next priorities:

#### **Dwelling and non dwelling burglaries on the Matthews Estate in Tidworth:**

There has been a recent spate of burglaries in and around the Matthews Estate. Whilst at this time there are no discernible patterns we would like to remind everyone to be vigilant and secure all doors including garages and sheds.

#### **Anti-social behaviour on Andover Road / Empress Way areas of Ludgershall:**

There has been an increased amount of anti-social behaviour in these areas from local young people.

### Sergeant Mark Freeman



Welcome to the Tidworth NPT news of 2013.

The priorities from quarter have now completed, but you notice that anti-social behaviour in Ludgershall has moved from location to another. NPT are working with Town Council to try find a long term solution to this reoccurring problem.

I would also like to mention PC Michael Bayliss, has retired, for his work at Tidworth and contribution to the force over the last 20 years will be missed.

101

tidworthnpt@wiltshire.pnn.police

www.wiltshire.police

www.facebook.com/wiltshire  
www.twitter.com/wiltshire

See page 2 for details of meetings/consultations

## What's been happening

### Netheravon

Between 9pm on Thursday 13 and 8am on Friday 14 December unknown suspect/s stole a vehicle parked on Mill Road, Netheravon. The owner recovered the vehicle a short distance away but suspect/s stole a set of golf clubs from the vehicle. The clubs were unique as they had jumbo handles made especially for the owner. Police would like to speak with anyone who witnessed this incident.

Between 5pm on Friday 14 and 7.15am on Saturday 15 December 2012 an unknown vehicle collided with a parked car on the High Street in Netheravon, causing extensive damage and then drove off failing to report the collision. Police would like to speak with anyone who witnessed this incident.

### Enford

On Monday 10 December at 3pm unknown suspect/s gained entry to a vehicle parked on the A338 at Everleigh. After gaining entry they stole a Sat Nav worth about £80, a bag of clothes and shoes to the value of £100, a pair of Ugg Boots to the value of £60 and £30 cash. Police would like to speak with anyone who witnessed this incident.

To contact Wiltshire Police or to report a crime or an incident call 101 (15p per call.) Call **999** in an emergency when a crime is in progress.

If you want to give information anonymously about a crime call Crimestoppers on 0800 555 111.

## Other news

**Retirement** - After three years of being the Community Beat Manager for the Ludgershall and Rural beat, PC Michael Bayliss retired on Sunday 27 January. Tidworth NPT would like to take this opportunity to wish him all the best in his future endeavours.

Michael's role will be taken over by PC Ivor Noyce who served as a Special Constable in Amesbury before joining as a response officer serving in both the North and South of the county.

In total PC Noyce has been with Wiltshire Police for over 30 years and Tidworth would like to take this opportunity to welcome him.

## Police and Crime Plan

The Police and Crime Commissioner for Wiltshire and Swindon Angus Macpherson is writing his Police and Crime Plan for Wiltshire, which will be published by the end of March.

The five year plan will be based on local priorities and will set the strategic direction of policing in Wiltshire and Swindon. The plan will determine local objectives for policing and reducing crime and disorder in the area.

It will also outline how he will be held to account by both the public and the Police and Crime Panel. The plan will be published on the PCC's website:  
[www.wiltshire-pcc.gov.uk](http://www.wiltshire-pcc.gov.uk)

## Other news

### Collingbourne Ducis :

Between 5.45pm on Friday 7 and 7am on Saturday 8 December 2012, a Vauxhall Frontera and a trailer were stolen from a farm in the Collingbourne Ducis area. Two Honda quad bikes and a quad bike trailer were also stolen from another farm in the area.

On Thursday 13 December, following a lengthy pursuit by Thames Valley Police air support unit, four people were arrested, and the Vauxhall Frontera recovered in the Reading area.

### Chute Forest:

Between 4am and 8am on Thursday 13 December, unknown suspect/s entered the driveway of an address in Chute Forest through closed insecure gates. A trailer to the value of £800 which was full of hedge cuttings was stolen from the drive. The trailer was unhooked from a vehicle it

was attached to and taken by unknown means. Police would like to speak with anyone who witnessed this incident.

### **Immobilise:**

Tidworth NPT would like to remind / advise you that you can register for **free** all of your electronic devices such as:

- Televisions
- MP3 players
- Laptops/computers
- Sat Navs
- Mobile phones

If you register devices like this it will enable the police to reunite stolen property with their rightful owners.

Just go to [www.immobilise.com](http://www.immobilise.com) to create your free account and register your goods.

## WILTSHIRE POLICE

### Tidworth Neighbourhood Policing Team

tidworthnpt@wiltshire.pnn.police.uk



## NPT map



The aim of neighbourhood policing is to have a dedicated policing team in your local community. We are here to work **with you** to tackle local concerns raised **by you**. We work with residents and local agencies to improve your quality of life.

To contact Wiltshire Police or to report a crime or an incident call 101 (15p per call.) Call **999** in an emergency when a crime is in progress.

If you want to give information anonymously about a crime call Crimestoppers on 0800 555 111.

For all other non crime matters contact Wiltshire Council on 0300 456 0100.



tidworthnpt@wiltshire.pnn.police.uk



www.wiltshire.police.uk



www.facebook.com/wiltshire.police  
www.twitter.com/wiltshirepolice

## Tidworth Town Beat



Community Beat Manager  
**PC David Griffith**



Police Community Support Officer  
**Michael Tryhorn**

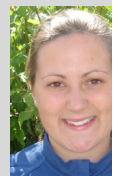
## Ludgershall and Rural Beat



Community Beat Manager  
**PC Michael Bayliss**



Police Community Support Officer  
**Maria Downham**



Police Community Support Officer  
**Philippa Royce**

**Bluez 'N' Zuz disco** - The next disco will be 19 February, admission £2. The disco is open to any young people secondary education. The disco now runs on the Tuesday of each month from 7pm – 9pm at Tidworth Y Club, Bulford Road, Tidworth.

**Tidworth** - On Sunday 4 November 2012 at 11.15pm Station Road, Tidworth a woman received a 'Cannabis S Warning' after being found in possession of a small amount of cannabis.

On Sunday 11 November 2012 just before 1am on F Drive, Tidworth, an out pane of glass was damaged known suspect. This incident is being dealt with by means of Local Resolution, which is a way to resolve low level crime and anti-social behaviour in the community rather than court room.