

The Rural Challenge - 2010



‘On its current course, with no change of policy and no commitment to action, much of the countryside is becoming part dormitory, part theme park and part retirement home. Only if people in rural communities have ready access to local schools, local jobs, local shops and pubs and affordable homes will they and their children thrive, and will the nation meet its environmental and economic needs.

A newly invigorated countryside is essential for hard-nosed reasons that affect our national future. The Rural Coalition is united in our conviction that our countryside is in urgent need of a new vision, and made to-measure policies **distinguished by the fact that none is imposed blindly from distant places but all emerge democratically from rural communities themselves.**’



“I have yet to see any problem, however complicated, which, when looked at in the right way did not become still more complicated”.

Poul Anderson

Enford Parish Plan



**PROGRESS REPORT TO THE COMMUNITY
2ND JULY 2013**



Consultation



- 29 June 2012 – Consultation with youth club
- **30 June 2012** – **Parish Plan stand at village fete**
- July 2012 – Parish Plan newsletter article
- **17 July 2012** – **Public meeting in the VH**
- 2 Sept 2012 – Creation of Parish Plan website
- 2 Sept 2012 – Creation of on-line bulletin board
- 24 Sept 2012 – Parish Plan newsletter article
- Nov 2012 – Parish committees consulted on questionnaire
- Dec 2012 – Parish Plan newsletter article
- **Dec 2012** – **Questionnaires distributed**
- Feb 2013 – Parish Plan newsletter article
- **Feb 2013** – **Parish Council presentation**
- **March 2013** – **Presentation to other parish committees**

Are The Views of the Survey Representative of the Community?



- A comparison of the demographics of the households which sent in a questionnaire response, compared with that of the Pewsey area in general, suggests we have a good cross section in terms of age.
- A comparison, by area, of the number of households which sent in a questionnaire response, against the electoral roll, indicates that the major areas of habitation (Enford, East Chisenbury and Coombe) all averaged a 60% return rate, with Newtown and Compton achieving 50% or more.
- Overall, the committee feels that the views contained in this report are representative of the community.

Our Household



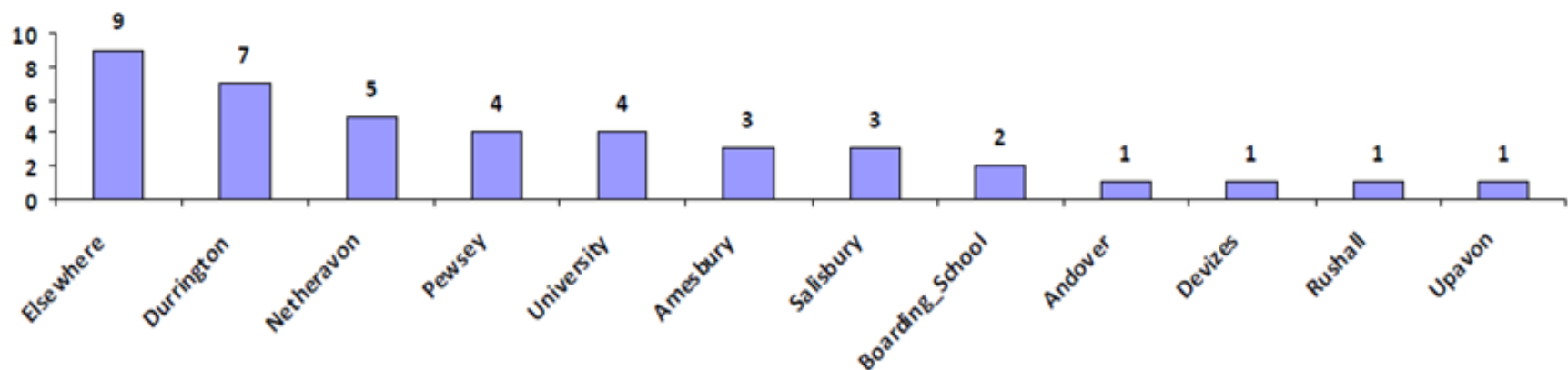
Overall 60% response to the survey

Approximately 11% born in the parish

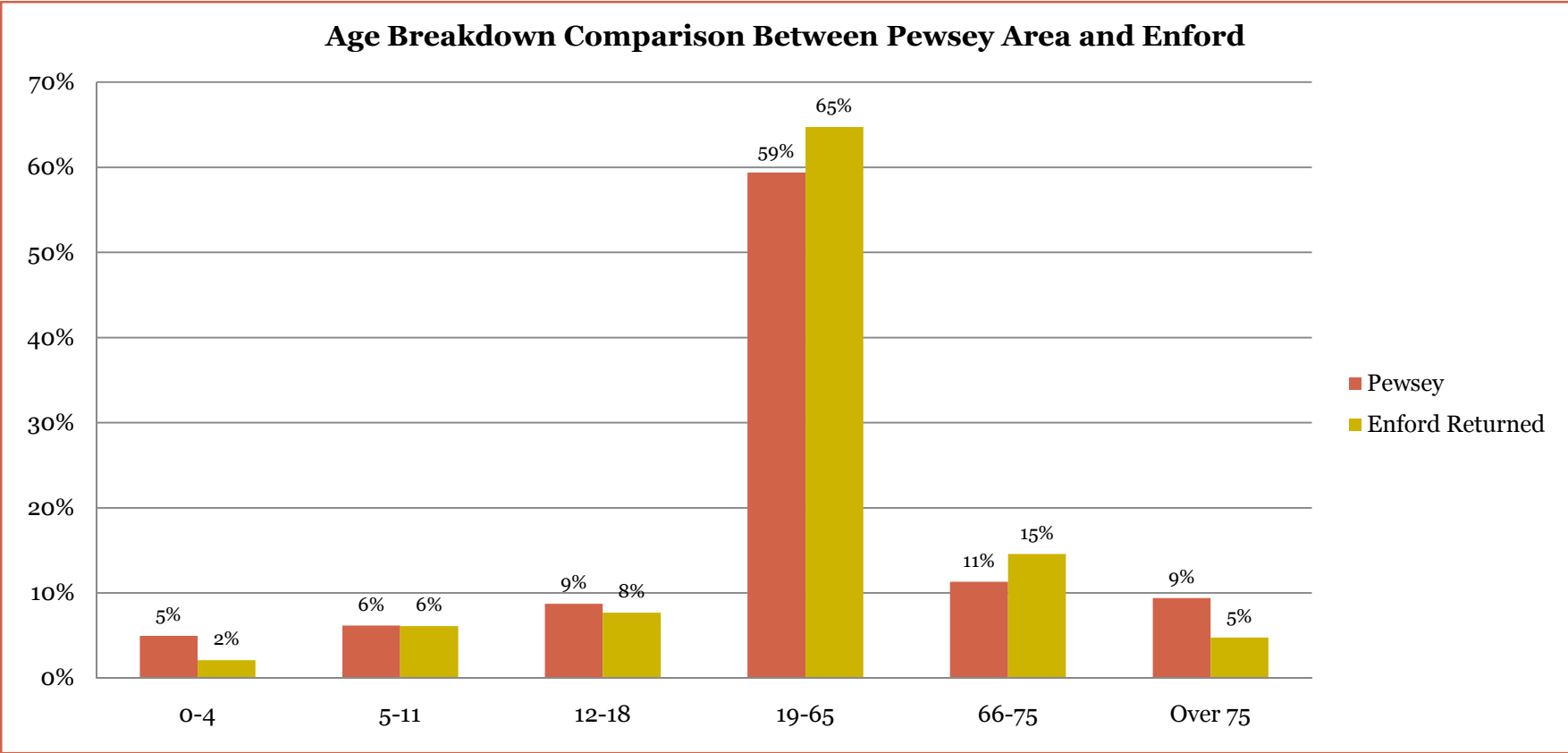
Employment categories:

- Almost half (**48%**) of us are in full-time or part-time paid employment
- **25%** (second largest category) retired
- **17%** in the education system

Our children are spread across many schools:



The breakdown in the ages of the households who responded to the survey indicates that age distribution in Enford is roughly comparable to the Pewsey area as a whole

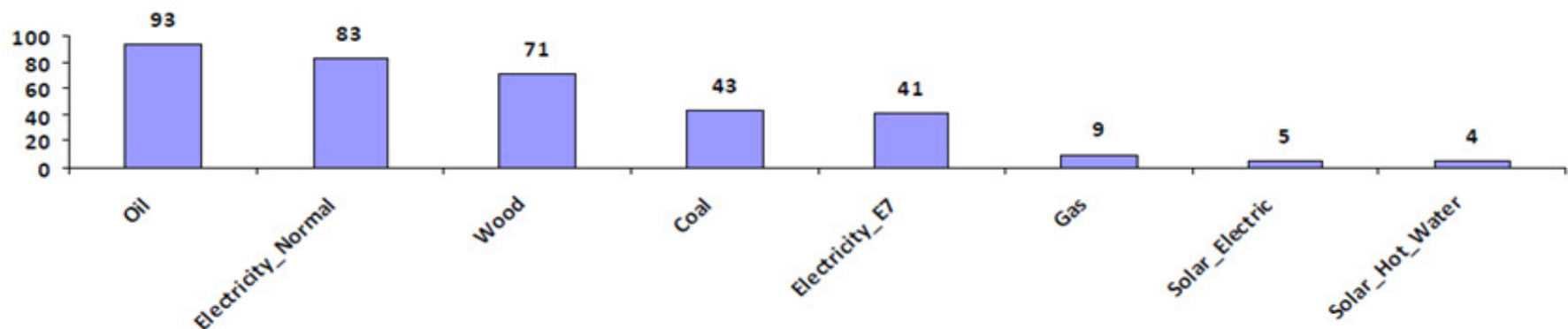


33% of households have one or more members involved in voluntary work.

20% of households have at least one family member who is either self-employed or runs their own business.

Most households rely on more than one fuel – most popular household fuels are: Oil (**60%**); Electricity (standard rate) (**53%**); Wood (**46%**).

Despite heavy dependence on oil, only **6%** of heating oil users belong to a bulk oil buying scheme.



Transport & Road Safety



Travel to Work / School

Q10. How do members of your household normally travel to work, school, pre-school or college?

- **75%** Commute daily / Travel by car
- **11%** Travel by school bus (represents about half the children of school age)
- **6%** Work from home
- **4%** Use public transport
- **3%** Walk or cycle
- **1%** Weekly commute

Travelling To Shops

- **97%** of households travel by car for their weekly shop
- **90%** of households travel by car to their *nearest shop* (eg. for a pint of milk or newspaper)
- only **2%** of households use public transport to get to the shops (suggesting that even those who are entitled to free public transport generally don't use it)

Car Sharing

Do you ever share a car with a friend or work colleague?

- 6% said they often shared car journeys
- 16% said they occasionally shared
- **78% never shared or only rarely**

If not, why not?

- **55% said car sharing was difficult because of being tied to someone else's schedule**
- **34% said it was difficult to find someone with similar travel needs**
- 11% felt uncomfortable about sharing or too embarrassed to offer or to ask

Road Safety

Over **2/3^{rds}** of respondents were concerned to some degree over road safety,

And roughly **1/3rd** of respondents felt there was a shortage of pavement, street lighting and parking in their areas.

Issues raised included:

- Speeding in all areas
- Traffic Calming
- Parking
- Large vehicles – School buses / tractors / HGVs
- Street lighting
- Footpaths
- Signage
- Less through traffic
- Trimming of hedgerows

Cost & Access to Transport

- The majority did **not** feel their quality of life was reduced by cost of, or access to, transport
- Although **50%** said they **would** use public transport more if it was cheaper or more frequent

Shopping, Food & Crafts



The most popular shopping destination is Amesbury, followed by Salisbury and Devizes - these 3 account for **70%** of households shopping trips.

Around **8%** order groceries on the internet.

Around **20%** of us have regular deliveries of milk, newspapers, etc.

90% of us use the shops at either Netheravon or Upavon for small purchases.

Over **40%** of us grow vegetables or fruit, with smaller numbers breeding chickens, ducks and rabbits.

Over **85%** said they would buy from a local market (if there was one), and around **20%** would use it to sell their own produce

Shopping

Main suggestions/comments put forward:

- Local Market
- Shop with a delivery service
- Post Office
- Bakery
- Community run minibus for shopping run by volunteers
- Local car sharing scheme
- Pubs to provide service for newspapers, milk, bread etc
- Supermarket delivery services charges too high
- Allotments

Community & Social Facilities



72% of respondents said they had good friends in their own locality or elsewhere in the parish – only **5%** said they didn't feel part of a community.

89% of respondents thought that the amount of organised entertainment in the parish was about right - the other **11%** thought there was too little - nobody thought there was too much.

Of those households with children:

- Roughly half said their children had used the youth club or taken part in organised holiday activities;
- Roughly half (not necessarily the same half!) said they were happy with activities and facilities provide for young people.

Suggested improvements to children's activities and facilities:

Not enough facilities for children apart from a tiny park in Grants Road.

A play area for children at the Village Hall

Tennis court / BMX track

Art based club

Rugby Club

More facilities for teenagers, ie. skateboard park

Children's films in Village Hall

Activities for all ages

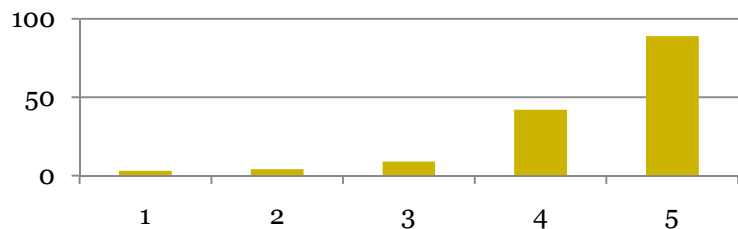
A very active youth club to encourage minds and fitness

Things for them throughout the holiday which they can learn and have fun doing, ie. old fashioned things that are dying out

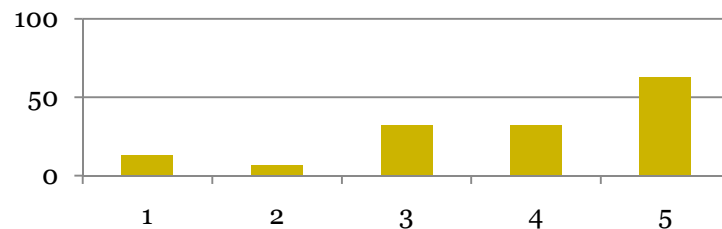
Give the children a voice as to what they would like

Q29 - How do you rate each of the following as being important to village life?

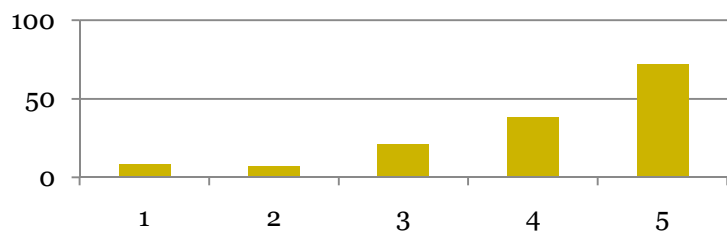
Village Hall



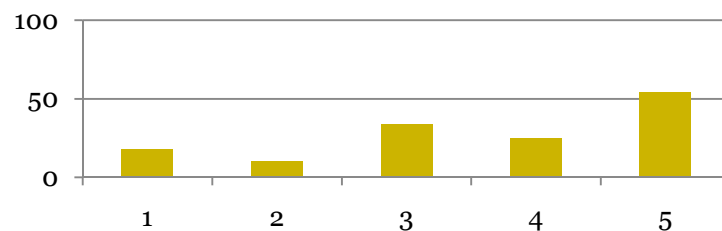
Church



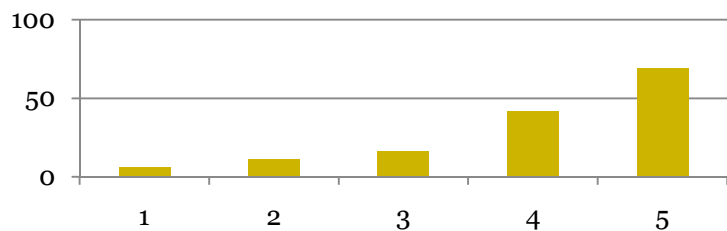
Pubs



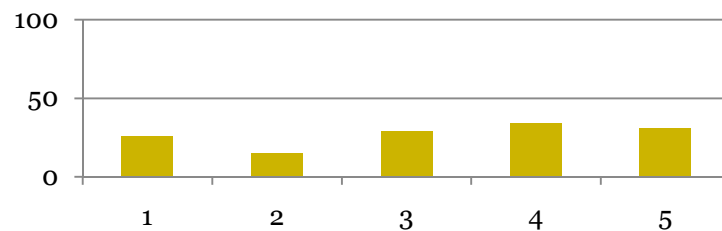
Playpark



Paths



Parish Hall



Village Hall & Recreation Ground



Q36 - How often do you attend entertainment events (including film evenings) in the Village Hall.

21% of respondents attend events at the village hall as often as they are able. Another **32%** said they attend a few events each year. **47%** attend rarely or never.

Apart from personal reasons (“*don’t have the time*”) and geographic reasons (“*it’s too far away*”), the main reason that people didn't use the village hall more often was that they were not interested in the type of events.

4% of respondents thought that events were too expensive.

Some elderly and/or disabled respondents said they were afraid of going (or didn't wish to go) alone or were unable to get there on foot.

About **20%** of households are a member of one or more of the sporting and recreational clubs.

People would like to see more of the following events:



- More, and more varied, live music events
- More exercise classes - after 7pm
- More films
- Theatre productions/pantomime
- Ballroom dancing
- Family fun days/children's play activities
- A market/farmers' market/Christmas gift fair
- More functions for the over 60s
- Talks on local history/archaeology/policing/politics, etc
- Coffee mornings
- Films for children in the holidays
- More organised sport and activity clubs for children
- Car boot sales
- A weekly quiz night (with food)
- A monthly open evening for the village (bring some buffet food)
- Sport and social Competitions
- Evening classes for adults and children
- Use Rural Arts, Wiltshire
- Bingo
- Craft fairs
- Special 'pop-up' events rather than regular
- More summer fetes

People would like to see these clubs established:



- Tennis / children's tennis
- Cricket / children's cricket
- Dancing
- Badminton
- More keep fit lessons at night / Circuit training / Zumba / Yoga
- Evening classes that you can also do with your children.
- Knitting crafts and woodwork
- Jigsaw library
- Snooker
- Antiques fair
- Rugby / Toddlers rugby
- Bridge
- Computer Club
- Singing and art
- Cycling club
- A rambling or walking club.
- Archery
- Darts
- Athletics club
- Ask the teenagers what they would like!!
- Amateur dramatics

People suggested improvements to the hall, and the way it is run:



- Parking , especially disabled
- A bit clinical, - create atmosphere
- Toilet roll dispensers. Toilet tissue is always on the floor at functions
- Divide the two areas of the hall (Main hall and conference area) thus creating 2 separate rooms when needed
- Exercise equipment
- When hall is booked, no other groups should use the facilities and leave toilets dirty
- More staging and possibly some stage lights
- Free access to kitchen equipment.
- One single payment for hire of hall, not payments for use of eg. dishwasher and cleaning.
- Would like to see it used more in the day through the addition of picnic, BBQ and children's play facilities.
- The front of the hall is a great place to sit in the sun - it needs a bigger patio with tables and chairs.
- Reduce charges for locals. Do not charge for use of field.

Parish Hall



Q43 - How often do you attend entertainment events in the Parish Hall.

9% of respondents attend entertainment events in the Parish Hall as often as they are able. Another **10%** attend a few events each year. **81%** attend rarely or never.

Apart from personal and geographic issues, the main reason that people didn't use the parish hall more often was that they were *not interested in the type of events* – most of the remainder either didn't like the venue or were unaware of what activities were held there.

About **5%** of households are a member of one or more of the sporting and recreational clubs.

People would like to see more of the following events, and/or clubs established:



- Interesting speakers (eg. local MP, archaeologist, historian, representative of the police).
- Jumble sales, craft Sales
- The proposed second hand book sale is a very good idea. Preferable in the evenings for more people to meet up. What about CDs and DVDs?
- Exercise / Table tennis club
- Children's youth clubs and organised clubs/sport. Evening classes for adults and children.
- Games room open to older children with settees - a place for their own space
- Tea dance, coffee mornings, bring and buy.
- Toy library, book swap, coffee shop.
- Village community market.
- OAPs coffee morning. Monthly lunch club.

We asked for suggested improvements to the hall, and the way it is run:



Comments and suggestions, as to how the parish hall might be improved and/or better utilised, showed that there are widely opposed viewpoints:

To some, this is a much loved building with historical importance to the community.

Others see it as an ageing and (now that we have a new village hall) redundant facility, the sale of which might be used to fund other projects within the parish.

The following comments are typical of the sentiments expressed in the survey:

Run It On



People who felt that it should be run on said:

- The ongoing maintenance programme will improve the hall and we cannot afford to lose this facility. It can run alongside the village hall.
- Because of age, size, location etc people shouldn't expect village hall-like facilities. Excellent for locals who can walk there.
- Adequate for its uses. Needs tidying up.
- The parish hall has history in this village. One of the few places that is original. It should be helped.

They suggested the following improvements to the hall:



- Parking
- Toilets
- Heating
- Decor
- Seating
- Kitchen
- Disabled access
- Lighting
- Outside appearance

Some thought that the parish hall could be developed in a radically different role - they suggested:

- Library
- A village community market.
- Turned into a shop (if sustainable)
- I would like to see it revert to its original function as a reading room, drop in centre and meeting place, complete with internet access and sale of refreshments - perhaps with even a small community-managed shop selling local produce.
- It could be turned into bunk house accommodation for walkers

Redundant



People who thought it was redundant said:

- Appreciate the history but feel the village does not need two halls. The village hall can offer everything the village needs.
- Sell it and use the proceeds to improve facilities elsewhere - for example children's play areas.
- Funds are scarce, so let's have just one really good venue.

All Saints Church



10% of respondents are regular church-goers.

33% of respondents don't use the church at all

The bulk of the remainder mainly use it for funerals, weddings and the like.

Some respondents thought the church should be used more as a community space for secular/social events.

There were some suggestions as to how services might be improved however, of those that expressed an opinion, the vast majority are happy that the schedule of services meets the need of the community

How might the Church and its grounds and facilities be improved or better utilised so as to attract more use by the community?

The church has a strong role in village life

The church needs to re-establish itself into village life and be more into secular activities

More events should be held there open it for social events

Integrate church as a community space/facility.

Community choir

Bring back the old Sunday service, the old hymns

Attract more people - e.g. hymns people know, traditional services and services to include children

More publicity about what goes on or could go on there

I wish the church would share its beautiful site with the Catholic Church

Communication



For over **90%** of households, the newsletter is the main source of information about what's going on in the parish.

Over **95%** either read it from cover to cover or, at least, flick through it when it comes through the door.

The most useful bits were considered to be: information about events; trader adverts and NHW / Police bulletins.

Two thirds of respondents made use of the parish phone directory, although **20%** thought that having a parish phone directory, website, email list or facebook page was in some any way an invasion of privacy.

Over **80%** of respondents have broadband, and **53%** assessed performance as adequate or better (of the remainder, *half thought that performance was awful*).

73% of households get a good mobile phone signal throughout the house, with another **22%** able to get a signal upstairs or in the garden. **3%** get no signal at all.

The biggest number of comments related to improving broadband / BT infrastructure, TV and radio reception and more/better/tidier notice boards in the village.

Governance



How do you rate the effectiveness of the parish committees.

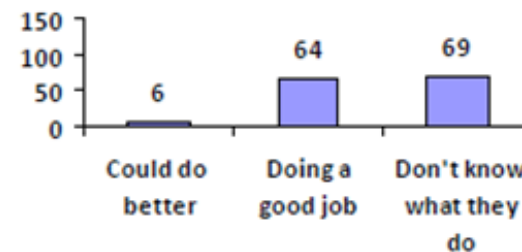
Parish Council



Village hall committee



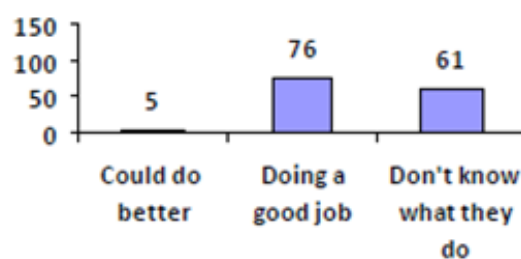
Parish hall committee



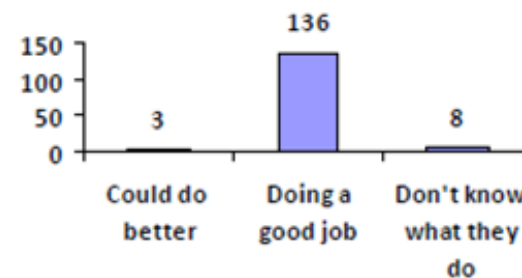
Enford community fund



Parochial church council



Newsletter



The majority of respondents thought that the village committees were doing a good job, although **30%** of respondents didn't know what the parish council did, **43%** for the PCC and **49%** for the parish hall committee.

Around **40%** read parish council minutes, and **86%** feel that the level of management of parish affairs is about right (**11%** think there is too little).

About **40%** of respondents felt that they contributed enough to the community

40% would like to contribute more to the community.

The biggest number of comments related to a desire for more, and better, engagement by the parish council with the community.

Suggested Governance Improvements



- The Parish Council should communicate more and inform the Parish on what they are doing.
- Suggestions that more is made of the Newsletter, emails and media to put the PC message across and hold village meetings
- Get younger members in with new and fresh ideas. Also more regular changes of management in both the PC and the Village Hall committees
- Committees should coordinate their activities more for the benefit of all, and be led by the Parish Council

Dislikes



On the whole, we rub along fairly well with the military and the farmers, and are not greatly inconvenienced by flooding or vandalism

However we do get annoyed by litter and dog mess, and are particularly concerned about speeding traffic.

Likes



People like living here.

The benefits of living in a relatively small community, in the countryside for most people seem to outweigh the disadvantages of not being in close proximity to shops and other amenities.

General Comments



Q70. Anything else you would like to say about how the quality of life of people living in the parish of Enford might be improved?

- Reduce the speed of through traffic, and the size of vehicles travelling through the parish
- A street light at the bottom of the bridleway towards the bottom of Water Lane
- A reduction in use of over-sized modern tractors on C32 to prevent breakdown of verges
- Measures to reduce traffic noise from the Upavon/Amesbury main road
- Speed limit through Coombe
- More parking space
- Demolish the parish hall and use the site to provide off-street parking for Longstreet, thus making the street safer
- Reduction in late night shelling
- A syndicate for buying heating oil
- Flood Plan - opening hatches on river?

Q70. Anything else you would like to say about how the quality of life of people living in the parish of Enford might be improved?

- A wiggly bus
- We would like a shop - to get on a bus, just for bread or milk, is not good
- More for the over 60s
- Assistance for elderly and people with disabilities to get to the entertainments in the evenings.
- Respect people's privacy
- Mini bus for trips in summer
- More, and more interesting, opportunities for people (of all ages and backgrounds) to meet up together.
- Get more people involved in the running of the parish
- More community spirit / less class division
- We need a village centre
- A village meeting once or twice a year

Closing Remarks



Summary of Main Themes



- **Preserve our rural idyll:**
 - Preserve and improve those facilities which we value:
 - ✦ Church, halls, pubs, newsletter, rural environment, community fund
 - Do something about those things which detract from our quality of life:
 - ✦ Traffic
 - ✦ Litter, dog mess
 - Reduce car dependency
- **Develop community spirit:**
 - Better communication (open, informative and engaging village organisations)
 - A central village facility in Enford
 - Make better utilisation of the church, the halls and the recreation ground
 - More for children and teenagers
 - More help for the elderly and disabled
 - Mutual support and coordination between parish committees (a joined-up parish)

Categorisation of Issues

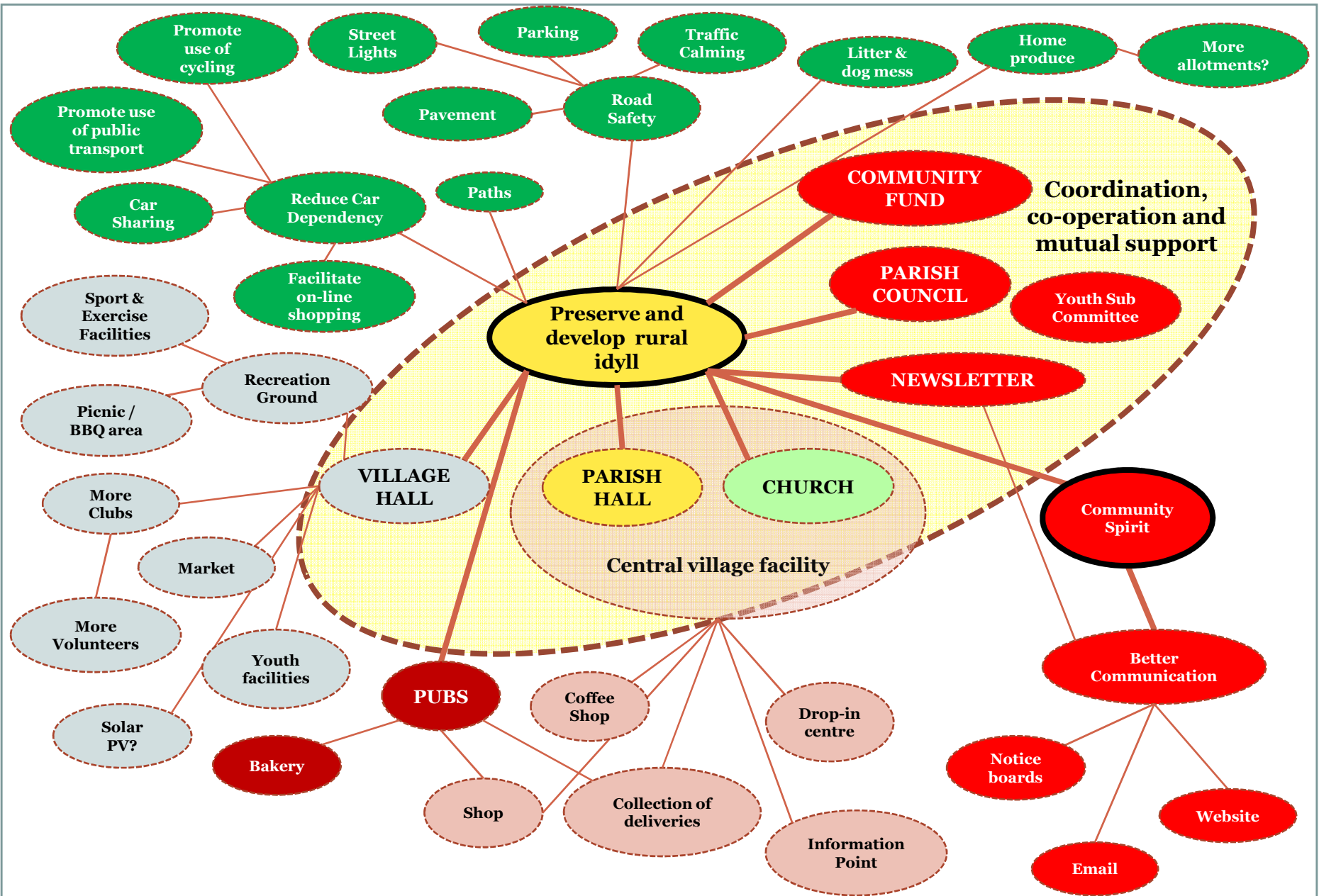


- **Individual Actions** – Things that people can do for themselves (eg. helping elderly or disabled neighbours, volunteering, car sharing, collecting litter).
- **Community Actions** – Issues which can be tackled, within the community, by existing village committees, or which may require a new project team to be established (eg. allotments, playparks).
- **Working In Partnership** – Issues, for example traffic control, which cannot be resolved except in conjunction with an outside agency such as Highways Department.

Way Ahead



- **July** – **Second public consultation meeting**
- **October** – 1st draft of action plan for review by village committees
- **February** – 2nd draft of action plan for public review
- **March** – 2nd questionnaire
- **May** – Action plan complete
- **June** – Parish plan complete
- **July** – Plan launch event and newsletter distribution





THANK YOU FOR LISTENING